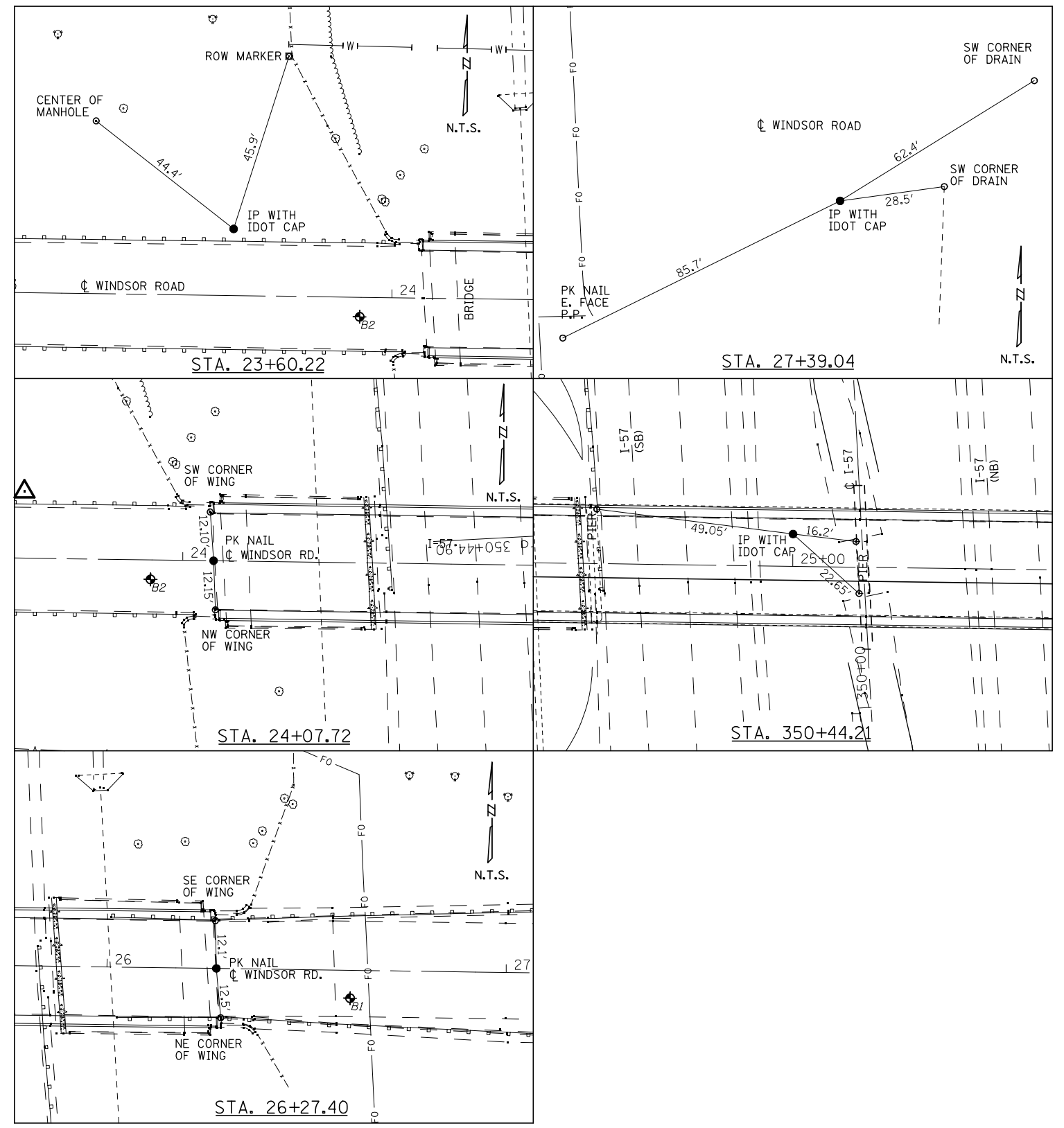
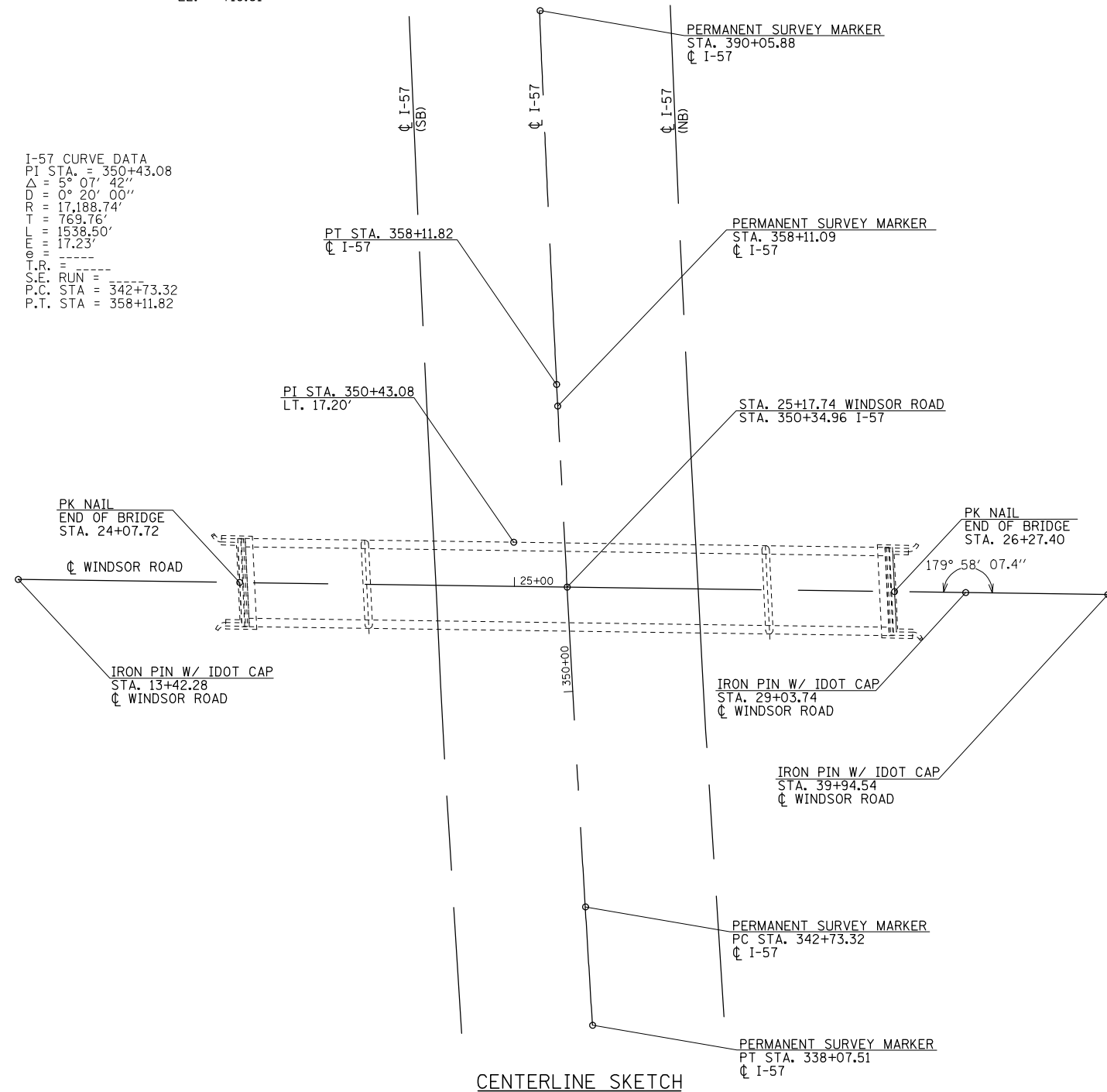


- BM# CHAMPAIGN-63 = BRASS DISK SET IN CONC. ± 600' WEST OF SN 010-0176,  
± 6' SOUTH OF SOUTH E.O.P. ON WINDSOR ROAD  
STA. 19+39.92  
O/S = 18.2' RT  
EL: = 723.40
- BM# 4653-2 = CHISELED "□" ON NE WING OF SN 010-0176 (WINDSOR ROAD)  
STA. 26+26.00  
O/S = 13.0' LT  
EL: = 734.22
- BM# 4653-1 = CHISELED "□" ON HEADWALL, EAST/WEST PIPE,  
WEST SIDE OF I-57, ± 60' NORTH OF WINDSOR ROAD  
STA. 350+97.91  
O/S = 74.6' LT  
EL: = 713.94
- BM# 4650-TBM-1 = CHISELED "□" ON NE CORNER OF BRIDGE DECK,  
N.B. LANES OF I-57 STRUCTURE #6, ± 0.25 MI NORTH OF WINDSOR ROAD  
STA. 363+27.60  
O/S = 68.6' RT  
EL: = 719.61

I-57 CURVE DATA  
 PI STA. = 350+43.08  
 $\Delta$  = 5° 07' 42"  
 D = 0° 20' 00"  
 R = 17,188.74'  
 T = 769.76'  
 L = 1538.50'  
 E.M. = 17.23'  
 T.R. = ----  
 S.E. RUN = ----  
 P.C. STA = 342+73.32  
 P.T. STA = 358+11.82



FILE NAME =	USER NAME = #USER#	DESIGNED -	REVISED -
#FILE#		DRAWN -	REVISED -
		CHECKED -	REVISED -
		DATE -	REVISED -

**STATE OF ILLINOIS  
DEPARTMENT OF TRANSPORTATION**

**HORIZONTAL ALIGNMENT, BENCHMARKS & SURVEY TIES**

SCALE: SHEET NO. 1 OF 1 SHEETS STA. TO STA.

F.A.I. RTE.	SECTION	COUNTY	TOTAL SHEETS	SHEET NO.
57	(10-32)HB-2)BY	CHAMPAIGN	81	19
			CONTRACT NO. 70109	
ILLINOIS FED. AID PROJECT				