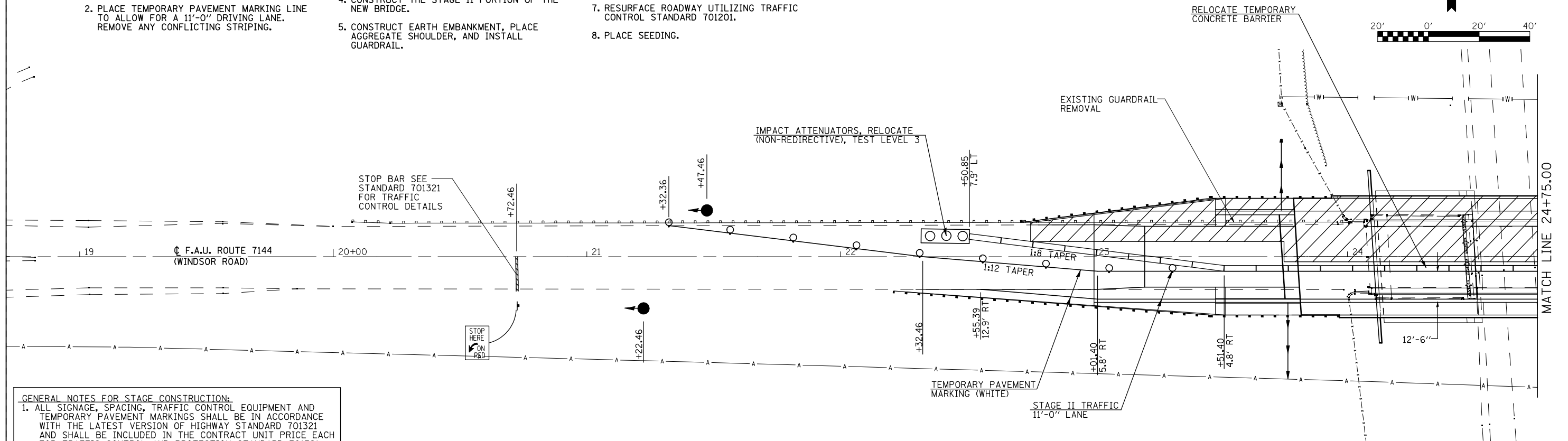


STAGE II TRAFFIC CONTROL

STAGE II NOTES

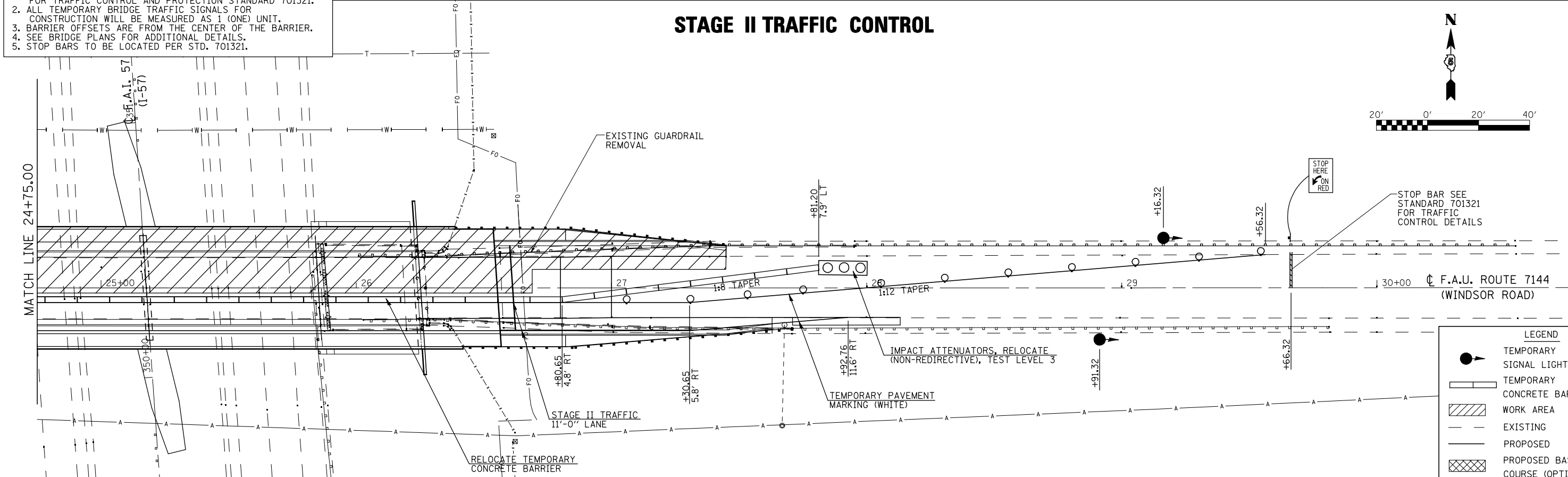
1. RELOCATE SIGNS, TEMPORARY BARRIERS, ETC IN ACCORDANCE WITH TRAFFIC CONTROL STANDARD 701321 AND AS SHOWN ON THIS PLAN.
2. PLACE TEMPORARY PAVEMENT MARKING LINE TO ALLOW FOR A 11'-0" DRIVING LANE. REMOVE ANY CONFLICTING STRIPING.
3. REMOVE THE STAGE II PORTION OF THE EXISTING STRUCTURE, PAVEMENT, GUARDRAIL AND PAVED SHOULDER.
4. CONSTRUCT THE STAGE II PORTION OF THE NEW BRIDGE.
5. CONSTRUCT EARTH EMBANKMENT, PLACE AGGREGATE SHOULDER, AND INSTALL GUARDRAIL.
6. REMOVE TEMPORARY BARRIERS, SIGNALS, WORK ZONE PAVEMENT MARKING, AND SIGNS ASSOCIATED WITH TRAFFIC CONTROL STANDARD 701321.
7. RESURFACE ROADWAY UTILIZING TRAFFIC CONTROL STANDARD 701201.
8. PLACE SEEDING.



GENERAL NOTES FOR STAGE CONSTRUCTION:

1. ALL SIGNAGE, SPACING, TRAFFIC CONTROL EQUIPMENT AND TEMPORARY PAVEMENT MARKINGS SHALL BE IN ACCORDANCE WITH THE LATEST VERSION OF HIGHWAY STANDARD 701321 AND SHALL BE INCLUDED IN THE CONTRACT UNIT PRICE EACH FOR TRAFFIC CONTROL AND PROTECTION STANDARD 701321.
2. ALL TEMPORARY BRIDGE TRAFFIC SIGNALS FOR CONSTRUCTION WILL BE MEASURED AS 1 (ONE) UNIT.
3. BARRIER OFFSETS ARE FROM THE CENTER OF THE BARRIER.
4. SEE BRIDGE PLANS FOR ADDITIONAL DETAILS.
5. STOP BARS TO BE LOCATED PER STD. 701321.

STAGE II TRAFFIC CONTROL



LEGEND	
	TEMPORARY SIGNAL LIGHT
	TEMPORARY CONCRETE BARRIER
	WORK AREA
	EXISTING
	PROPOSED
	PROPOSED BASE COURSE (OPTION)

FILE NAME =	USER NAME = #USER#	DESIGNED -	REVISED -	STATE OF ILLINOIS DEPARTMENT OF TRANSPORTATION	STAGE II CONSTRUCTION		F.A.I. RTE. 57	SECTION (10-32HB-2)BY	COUNTY CHAMPAIGN	TOTAL SHEETS 81	SHEET NO. 23	
#FILE#	PLOT SCALE = #SCALE#	DRAWN -	REVISED -		SCALE: NONE	SHEET NO. 2 OF 2 SHEETS	STA. TO STA.	FED. ROAD DIST. NO.	ILLINOIS FED. AID PROJECT	CONTRACT NO. 70109		
	PLOT DATE = #DATE#	CHECKED -	REVISED -									
		DATE -	REVISED -									