

# INTERSTATE DETOUR USING ENTRANCE AND EXIT RAMP

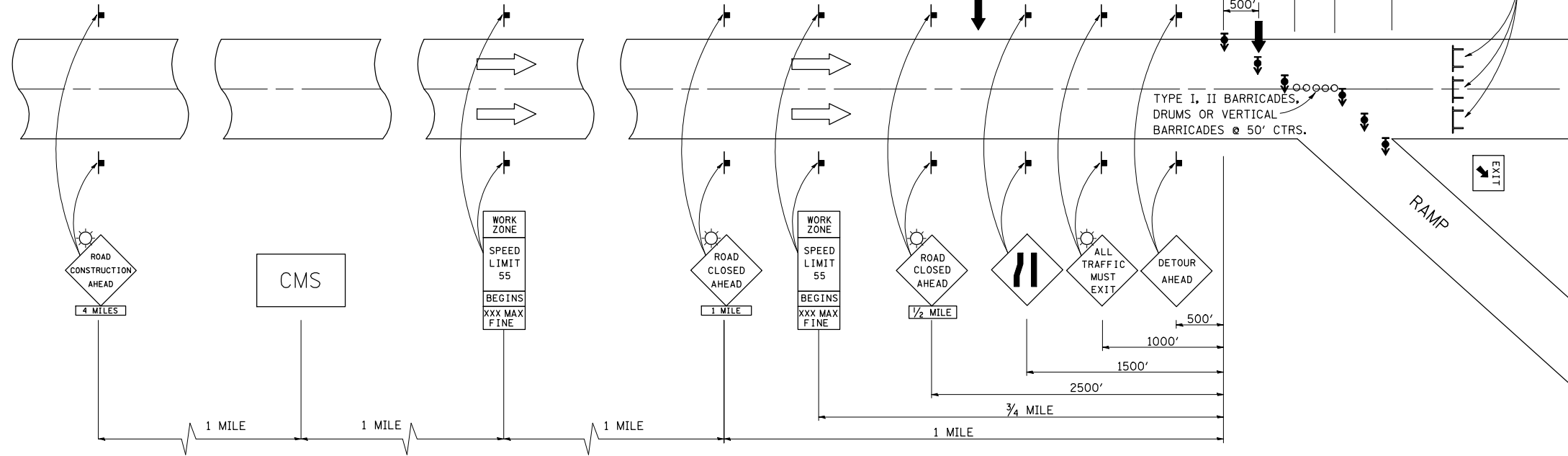
DIRECTIONAL BARRICADES WITH STEADY BURNING LIGHTS AT 50' (15 m) CTS. IN TAPER.  
 DRUMS WITH STEADY BURNING LIGHTS IN TANGENT (BETWEEN TAPERS) AT 100' (30 m) CTS.

FOR OFF PEAK CLOSURES LESS THAN 24 HOURS, THE TANGENT SECTION MAY BE OMITTED BY APPROVAL OF THE ENGINEER.

A CHANGEABLE MESSAGE SIGN SHALL BE USED IN ADVANCE OF SIGNING TO WARN OF CLOSURE

CMS	ROAD CLOSED	3 MILES AHEAD	FOLLOW DETOUR SIGNS
-----	-------------	---------------	---------------------

COST INCLUDED IN TRAFFIC CONTROL AND PROTECTION (DETOUR)



SYMBOLS	
	ARROW BOARD
	SIGN
	DRUM W/STEADY BURNING LIGHT
	TYPE III BARRICADE
	DIRECTIONAL BARRICADE W/STEADY BURNING LIGHT
	LIGHTED FLAGGER STATIONS

PLAN	SURVEYED	DATE
NOTE BOOK NO.	PLOTTED	
	CHECKED	
	AT	
	BY	
	FILE NAME	

PROFILE	SURVEYED	DATE
NOTE BOOK NO.	GRADES CHECKED	
	STRUCTURE	
	NOT AT THIS OFFICE	

Note: All dimensions are in INCHES (millimeters) unless otherwise shown.

## DISTRICT 5 DETAIL NO. X7011005

FILE NAME =	USER NAME = #USER*	DESIGNED -	REVISED -
*FILEL#		DRAWN -	REVISED -
	PLOT SCALE = #SCALE*	CHECKED -	REVISED -
	PLOT DATE = #DATE*	DATE -	REVISED -

STATE OF ILLINOIS  
 DEPARTMENT OF TRANSPORTATION

### INTERSTATE DETOUR USING ENTRANCE AND EXIT RAMP

SCALE: SHEET NO. 3 OF 4 SHEETS STA. TO STA.

F.A.I. RTE.	SECTION	COUNTY	TOTAL SHEETS	SHEET NO.
57	(10-32HB-2)BY	CHAMPAIGN	81	27
FED. ROAD DIST. NO. ILLINOIS FED. AID PROJECT			CONTRACT NO. 70109	