

INDEX OF SHEETS

- 1 General Plan and Elevation
- 2 General Notes & Total Bill of Material
- 3 Stage Construction Details
- 4 Temporary Concrete Barrier for Stage Construction
- 5-7 Top of Slab Elevations
- 8 Top of West Approach Slab Elevations
- 9 Top of East Approach Slab Elevations
- 10 Superstructure
- 11 Superstructure Details
- 12 Integral Abutment Diaphragm Details
- 13-15 Bridge Approach Slab Details
- 16 Bridge Fence Railing Parepet Mounted
- 17 Framing Plan
- 18 Structural Steel
- 19 Bearing Details
- 20 West Abutment
- 21 East Abutment
- 22 Pier
- 23 Bar Splicer Details
- 24 Metal Shell Pile Details
- 25-27 Boring Logs

GENERAL NOTES

Fasteners shall be ASTM A325 Type 1, mechanically galvanized bolts 7/8" diameter, holes 15/16" diameter, unless otherwise noted.

Calculated weight of Structural Steel = 38,200 lbs. M270 Gr. 36 and 404,910 M270 Gr. 50

No field welding is permitted except as specified in contract documents.

Reinforcement bars designated (E) shall be epoxy coated.

Bearing seat surfaces shall be constructed or adjusted to the designated elevations within a tolerance of 1/8 inch (0.01 ft.). Adjustment shall be made either by grinding the surface or by shimming the bearings.

The Inorganic Zinc Rich Primer / Acrylic / Acrylic Paint System shall be used for shop and field painting of new structural steel except where otherwise noted. The color of the final finish coat for all interior steel surfaces shall be light gray, Munsell No. 10Y 7/1. The color of the final finish coat for the exterior and bottom flange of the fascia beams shall be Interstate Green, Munsell No. 7.5G 4/8.

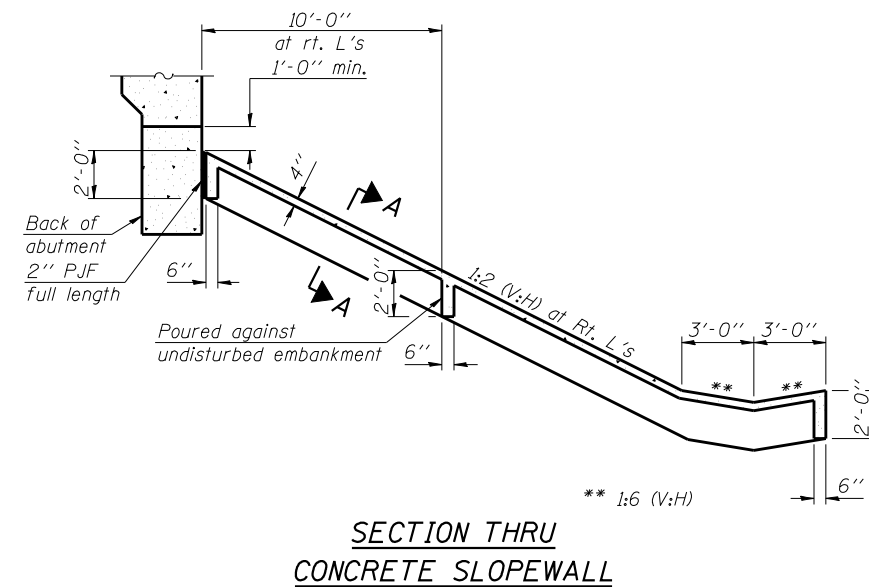
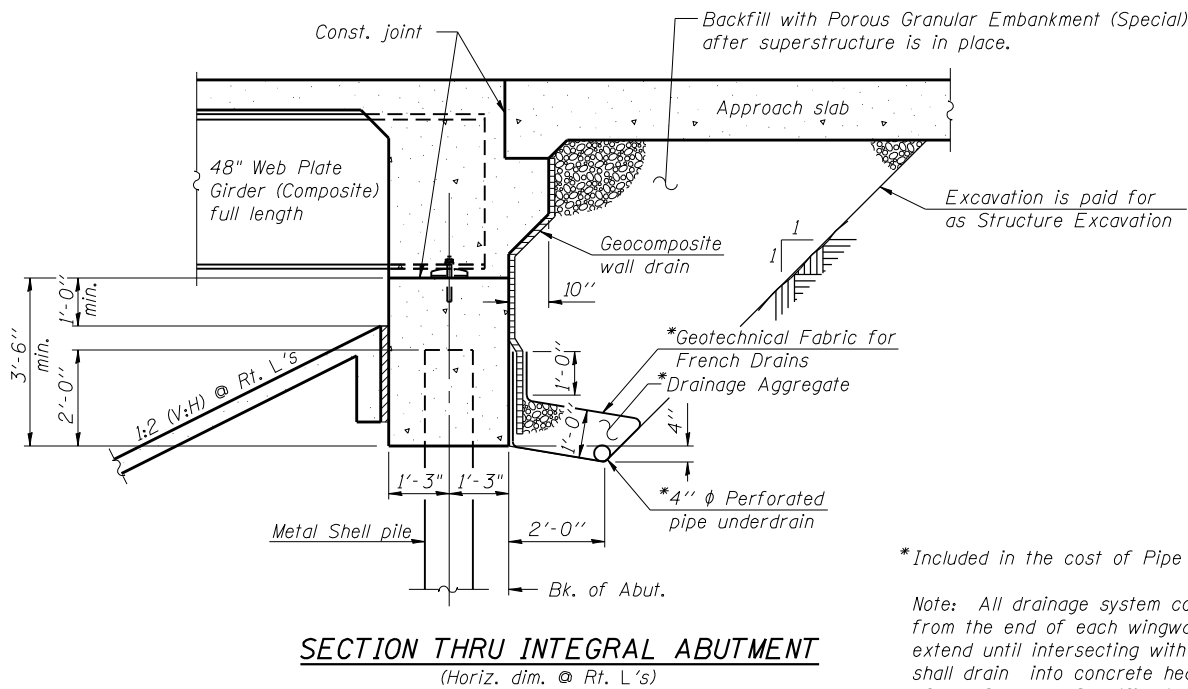
The embankment configuration shown shall be the minimum that must be placed and compacted prior to construction of the abutments.

The existing structural steel coating contains lead. The Contractor shall take appropriate precautions to deal with the presence of lead on this project.

Slipforming of parapets is not allowed.

TOTAL BILL OF MATERIAL

ITEM	UNIT	SUPER	SUB	TOTAL
Porous Granular Embankment (Special)	Cu. Yd.		167	167
Removal of Existing Structures	Each			1
Structure Excavation	Cu. Yd.		223	223
Concrete Structures	Cu. Yd.		169.1	169.1
Concrete Superstructure	Cu. Yd.	560.7		560.7
Bridge Deck Grooving	Sq. Yd.	1040		1040
Protective Coat	Sq. Yd.	1612		1612
Furnishing and Erecting Structural Steel	L. Sum	1		1
Stud Shear Connectors	Each	4995		4995
Reinforcement Bars, Epoxy Coated	Lb.	109,080	26,590	135,670
Bar Splicers	Each	886	161	1047
Bridge Fence Railing	Foot	430		430
Slopedwall 4 inch	Sq. Yd.		495	495
Pile Shoes	Each		41	41
Test Pile Metal Shells	Each		3	3
Furnishing Metal Shell Piles 14" x 0.312"	Foot		1846	1846
Driving Piles	Foot		1846	1846
Name Plates	Each	1		1
Anchor Bolts, 1"	Each	36		36
Anchor Bolts, 1 1/4"	Each	18		18
Geocomposite Wall Drain	Sq. Yd.		85	85
Temporary Sheet Piling	Sq. Ft.		385	385
Pipe Underdrains for Structures 4"	Foot		171	171
Temporary Support System Location 1	Each		1	1
Temporary Support System Location 2	Each		1	1
Temporary Support System Location 3	Each		1	1
Mechanical Splicers	Each		56	56
Protective Shield	Sq. Yd.	624		624



*Included in the cost of Pipe Underdrain for Structures.

Note: All drainage system components shall extend to 2'-0" from the end of each wingwall except an outlet pipe shall extend until intersecting with the side slopes. The pipes shall drain into concrete headwalls. (See Article 601.05 of the Standard Specifications and Highway Standard 601101)

FILE NAME = 710109_022.gen-noted.dgn
CB PROJECT NO. 8070-7

Coombe-Bloxdorf P.C.
- CIVIL ENGINEERS -
- STRUCTURAL ENGINEERS -
- LAND SURVEYORS -
Design Firm License No. 184-002703

USER NAME = .MML.	DESIGNED - GJB	REVISED -
PLOT SCALE = 10:8.000000 "1" / IN.	CHECKED - RKM	REVISED -
PLOT DATE = 9/26/2012	DRAWN - CFC	REVISED -
	CHECKED - RKM/MCB	REVISED -

**STATE OF ILLINOIS
DEPARTMENT OF TRANSPORTATION**

**GENERAL NOTES & TOTAL BILL OF MATERIAL
STRUCTURE NO. 010-0291**

SHEET NO. 2 OF 27 SHEETS

F.A.I. RTE.	SECTION	COUNTY	TOTAL SHEETS	SHEET NO.
57	(10-32HB-2)BY	CHAMPAIGN	81	40
CONTRACT NO. 70109				

ILLINOIS FED. AID PROJECT