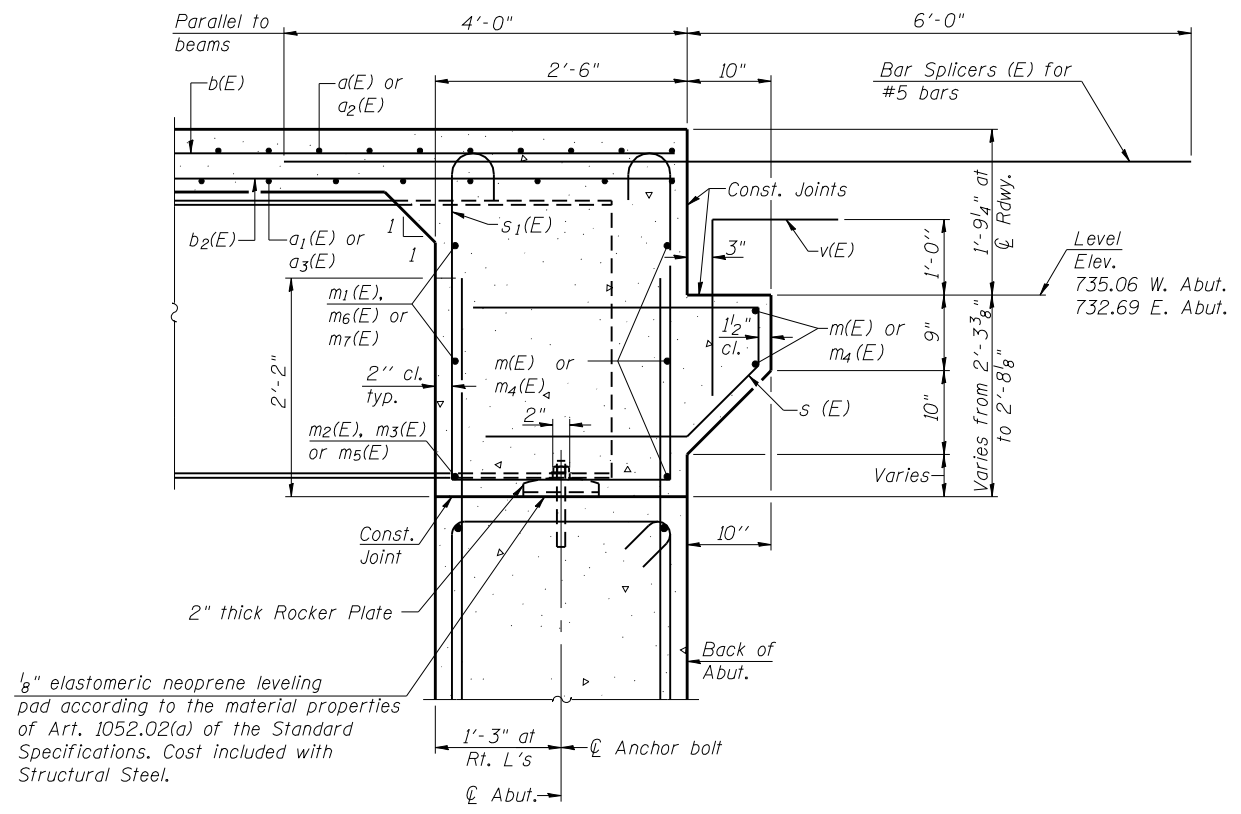


DIAPHRAGM ELEVATION AT ABUTMENT
(Looking East at East Abutment)



SECTION A-A
Dimensions at right angles to abutment, except as shown.

Notes:
Reinforcement bars in diaphragm are billed with superstructure on sheet 11 of 27.
Concrete in diaphragm is included with Concrete Superstructure on sheet 11 of 27.
For details of bars s(E) & s1(E) see sheet 11 of 27.
The s(E) and s1(E) bars shall be placed parallel to the girders. Spacing for these bars shall be at right angles to the girders.

MIN. BAR LAP
#6 bar = 3'-4"

FILE NAME = 70109_012-d:\psh-egm-dt\11.dgn
CB PROJECT NO. 09070-7

SI-DSI
1-27-12
Coombe-Bloxdorf P.C.
- CIVIL ENGINEERS -
- STRUCTURAL ENGINEERS -
- LAND SURVEYORS -
Design Firm License No. 184-002703

USER NAME = .MML.	DESIGNED - GJB	REVISED -
	CHECKED - RKM	REVISED -
PLOT SCALE = 0:2.000000 '1' / IN.	DRAWN - CFC	REVISED -
PLOT DATE = 8/10/2012	CHECKED - RKM/MCB	REVISED -

STATE OF ILLINOIS
DEPARTMENT OF TRANSPORTATION

INTEGRAL ABUTMENT DIAPHRAGM DETAILS
STRUCTURE NO. 010-0291

SHEET NO. 12 OF 27 SHEETS

F.A.I. RTE.	SECTION	COUNTY	TOTAL SHEETS	SHEET NO.
57	(10-32HB-2)BY	CHAMPAIGN	81	50
CONTRACT NO. 70109			ILLINOIS FED. AID PROJECT	