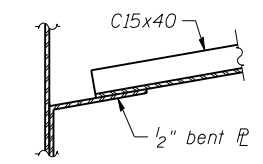
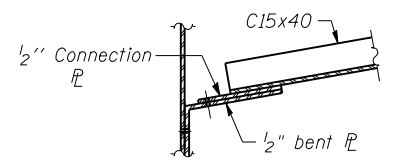


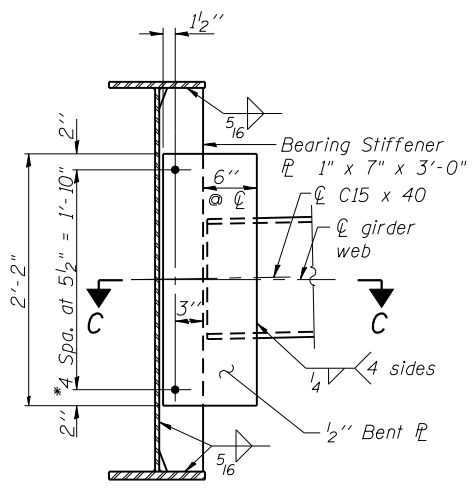
SECTION C-C



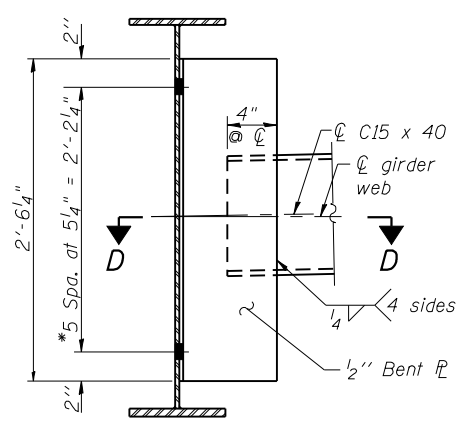
SECTION D-D



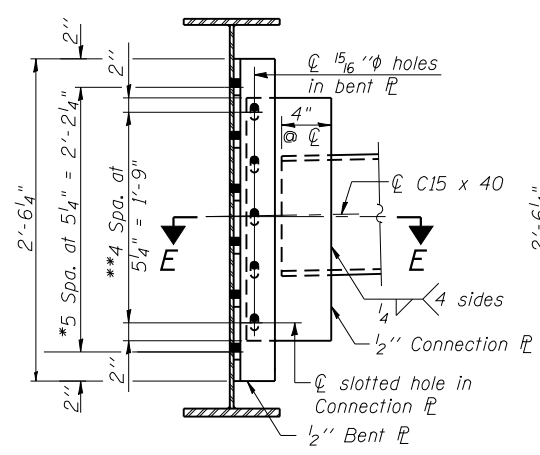
SECTION E-E



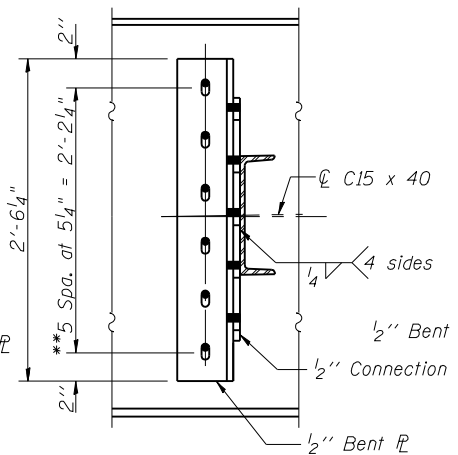
DIAPHRAGM 'D1'



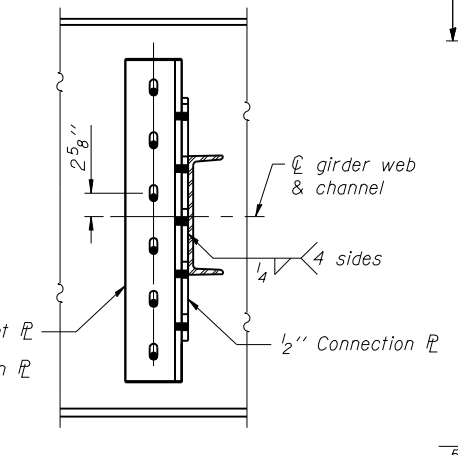
DIAPHRAGM 'D'
(except south side Girder 5)



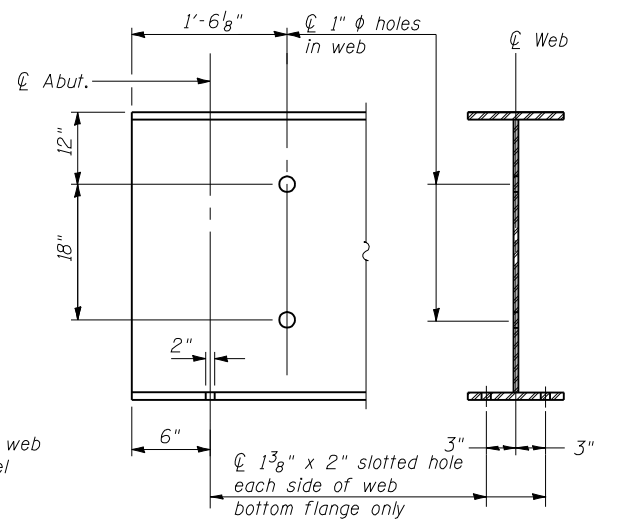
INITIAL BOLT ERECTION POSITION



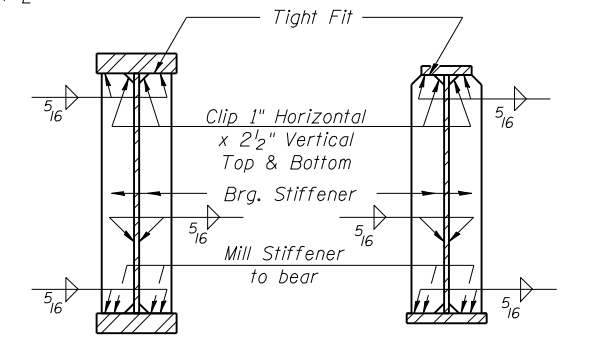
INITIAL BOLT ERECTION POSITION



FINAL ERECTION POSITION AFTER STAGE II DECK POUR

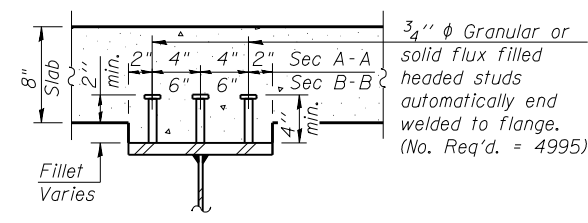


END OF GIRDER DETAIL
(Showing required hole locations)



SECTION AT PIER

SECTION AT ABUTMENT

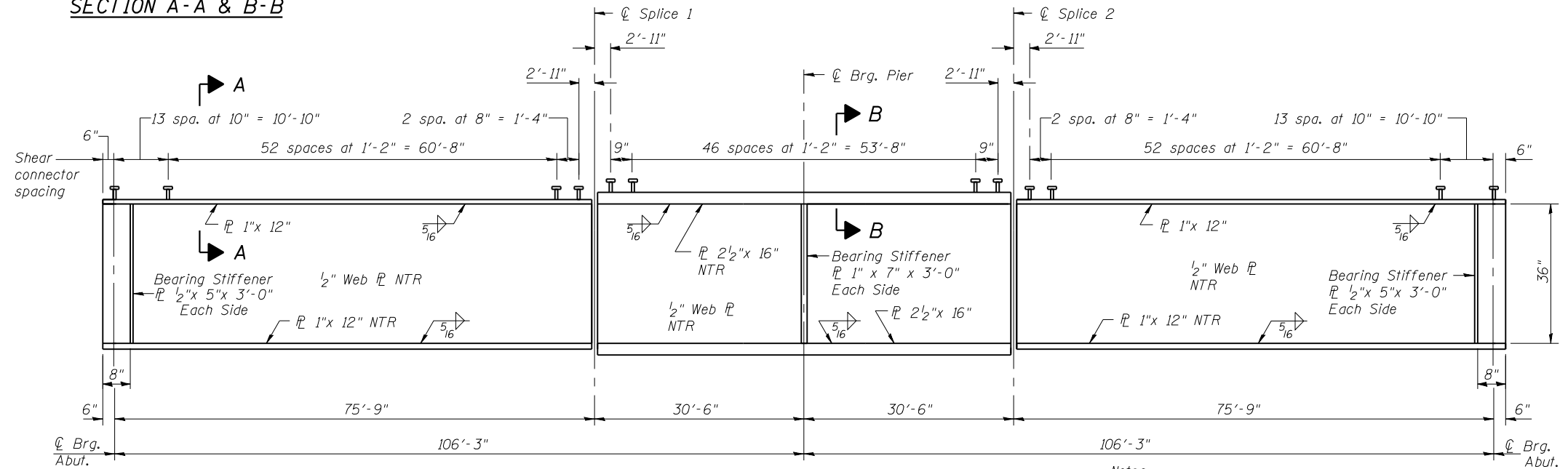


SECTION A-A & B-B

Notes:

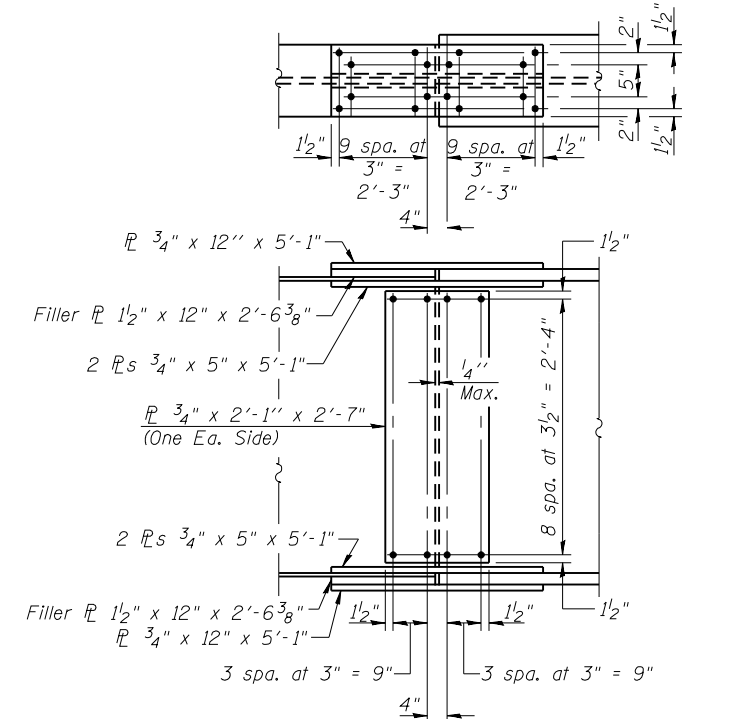
Two hardened washers required for each set of oversized holes. Alternate channels C15x50 are permitted to facilitate material acquisition. Calculated weight of Structural Steel is based on C15x40 Sections. The alternate, if utilized, shall be provided at no extra cost to the Department.
All diaphragms shall be installed as steel is erected and secured with erection pins and bolts except as otherwise noted. Individual diaphragms at supports may be temporarily disconnected to install bearing anchor rods.

** 3/4" φ HS bolts, on the south side of Girder 5 provide 1 3/8" x 1 7/8" vertical slotted holes in the bent plate at the web and in the connection plate. Bolts in slotted holes shall be finger tightened until the second stage pour is completed. Position slots so bolts move from one end with no concrete load to the opposite end under the deck load. The slotted holes in the bent plate and connection plate shall be positioned as shown to allow the bolts to move to the final erection positions under deck load. The holes shall be positioned to allow maximum bolt displacement without laterally stressing the girders.



GIRDER ELEVATION

Load carrying components designated "NTR" shall conform to the Impact Testing Requirements, Zone 2.



FIELD SPLICE DETAIL

Notes:

All plate girder and splice material except filler plates shall be AASHTO M270 Grade 50.
All splice plates except filler plates shall meet the requirements of Impact Testing, Zone 2.

FILE NAME = 71019-010-structural-1-steel.dgn
PROJECT NO. 09070-7

G-1
7-1-10

Coombe-Bloxdorf P.C.
- CIVIL ENGINEERS -
- STRUCTURAL ENGINEERS -
- LAND SURVEYORS -
Design Firm License No. 184-002703

USER NAME = .MML.	DESIGNED - GJB	REVISED -
PLOT SCALE = 0:2.000000 '1' / IN.	CHECKED - RKM	REVISED -
PLOT DATE = 9/28/2012	DRAWN - CFC	REVISED -
	CHECKED - RKM/MCB	REVISED -

STATE OF ILLINOIS
DEPARTMENT OF TRANSPORTATION

STRUCTURAL STEEL
STRUCTURE NO. 010-0291
SHEET NO. 18 OF 27 SHEETS

F.A.I. RTE.	SECTION	COUNTY	TOTAL SHEETS	SHEET NO.
57	(10-32HB-2)BY	CHAMPAIGN	81	56
CONTRACT NO. 70109			ILLINOIS FED. AID PROJECT	