

SEC. THRU ABUT.

BILL OF MATERIAL

Bar	No.	Size	Length	Shape
h(E)	52	#6	14'-6"	—
h2(E)	2	#4	4'-4"	—
h3(E)	2	#4	5'-10"	—
p(E)	13	#7	20'-2"	—
p1(E)	13	#7	27'-2"	—
s2(E)	64	#5	11'-7"	□
s3(E)	12	#4	6'-2"	□
u(E)	8	#6	10'-11"	┌
v1(E)	92	#5	4'-4"	—
v2(E)	22	#5	11'-2"	—
Structure Excavation			Cu. Yd.	67
Concrete Structures			Cu. Yd.	20.7
Reinforcement Bars, Epoxy Coated			Pound	3620
Furnishing Metal Shell Piles 14" x 0.312"			Foot	342
Driving Piles			Foot	342
Test Pile Metal Shells			Each	1
Pile Shoes			Each	7

For details of Bar Splicers, see sheet 23 of 27.
For details of piles see sheet 24 of 27.

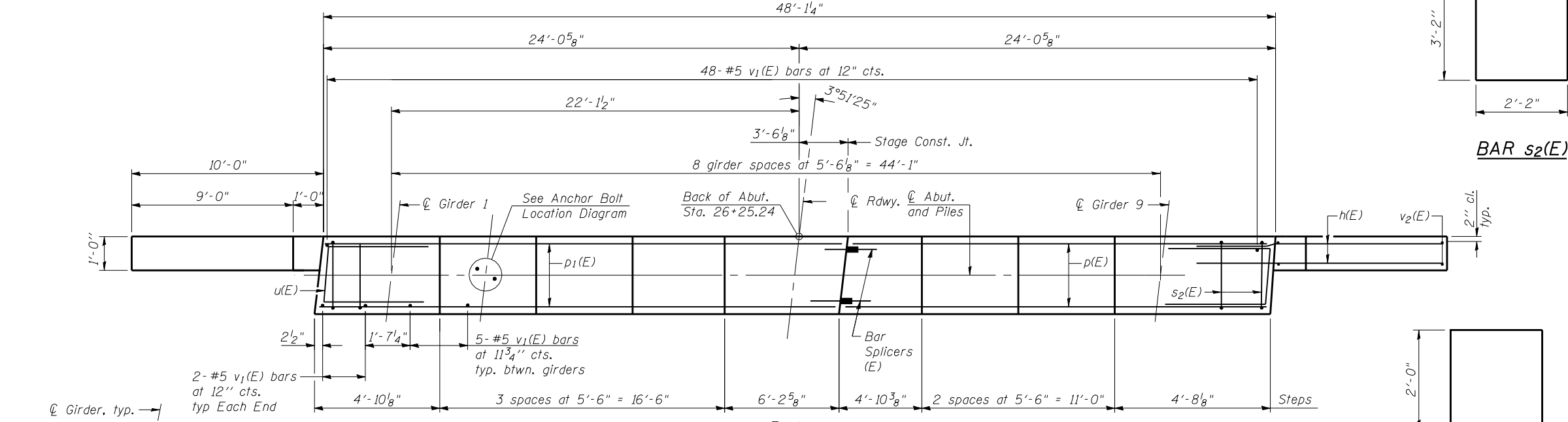
** 27 - Stage I, 37 - Stage II
*** Stage I - 21 back face, 19 front face
Stage II - 27 back face, 25 front face

Note:
Four steps monolithically with cap.

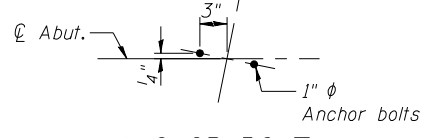
North Wing

South Wing

ELEVATION
Looking East



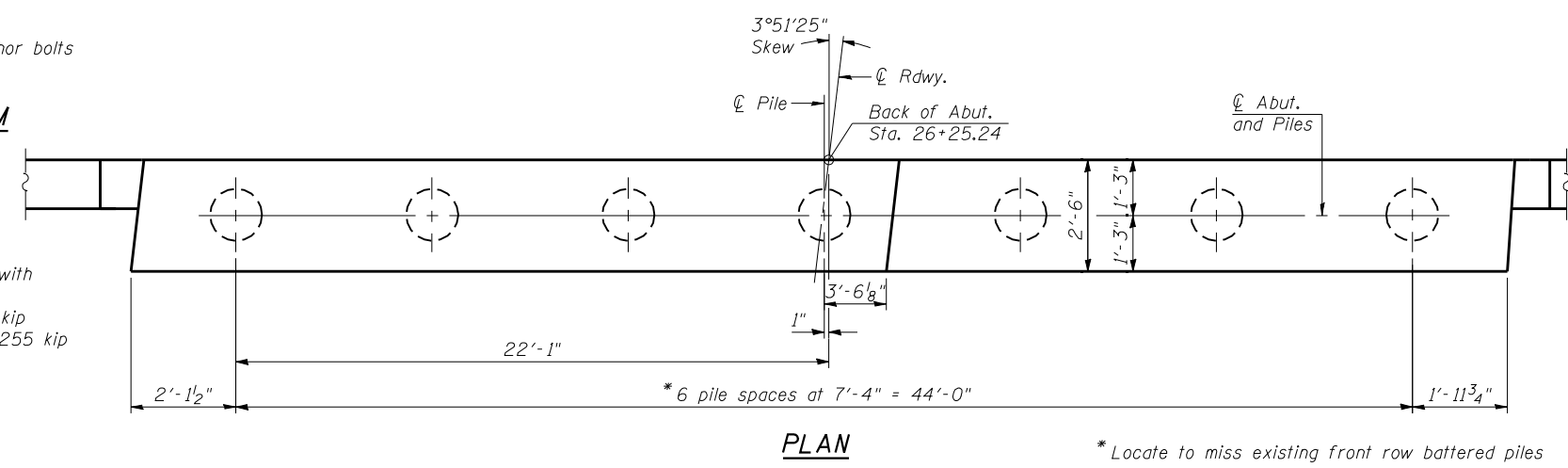
PLAN
Showing Dimensions and Reinforcement



ANCHOR BOLT
LOCATION DIAGRAM

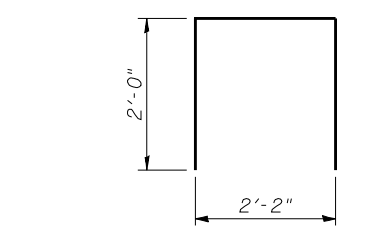
PILE DATA

Type: Metal Shell 14" x 0.312" with pile shoes
Nominal Required Bearing: 463 kip
Factored Resistance Available: 255 kip
Est. Length: 57 ft
No. Production Piles: 6
No. Test Piles: 1

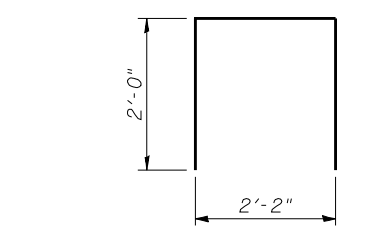


PLAN
Showing Piles

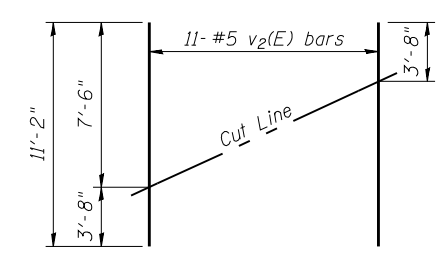
* Locate to miss existing front row battered piles



BAR s2(E)

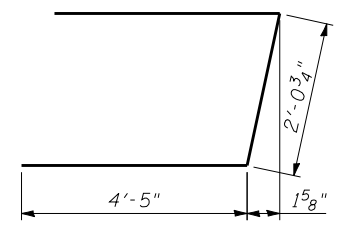


BAR s3(E)



FIELD CUTTING DIAGRAM

Order v2(E) full length. Cut as shown and use remainder of bars in opposite face.



BAR u(E)

FILE NAME = 710109_021.eas-abut.dgn
CB PROJECT NO. 090702-7

AI-R
7-1-10
Coombe-Bloxdorf P.C.
CIVIL ENGINEERS-
STRUCTURAL ENGINEERS-
LAND SURVEYORS
Design Firm License No. 184-002703

USER NAME = .MML.	DESIGNED - GJB	REVISED -
PLOT SCALE = 0:2.000000 '1' / IN.	CHECKED - RKM	REVISED -
PLOT DATE = 8/10/2012	DRAWN - CFC	REVISED -
	CHECKED - RKM/MCB	REVISED -

STATE OF ILLINOIS
DEPARTMENT OF TRANSPORTATION

EAST ABUTMENT
STRUCTURE NO. 010-0291
SHEET NO. 21 OF 27 SHEETS

F.A.I. RTE.	SECTION	COUNTY	TOTAL SHEETS	SHEET NO.
57	(10-32HB-2)BY	CHAMPAIGN	81	59
CONTRACT NO. 70109			ILLINOIS FED. AID PROJECT	