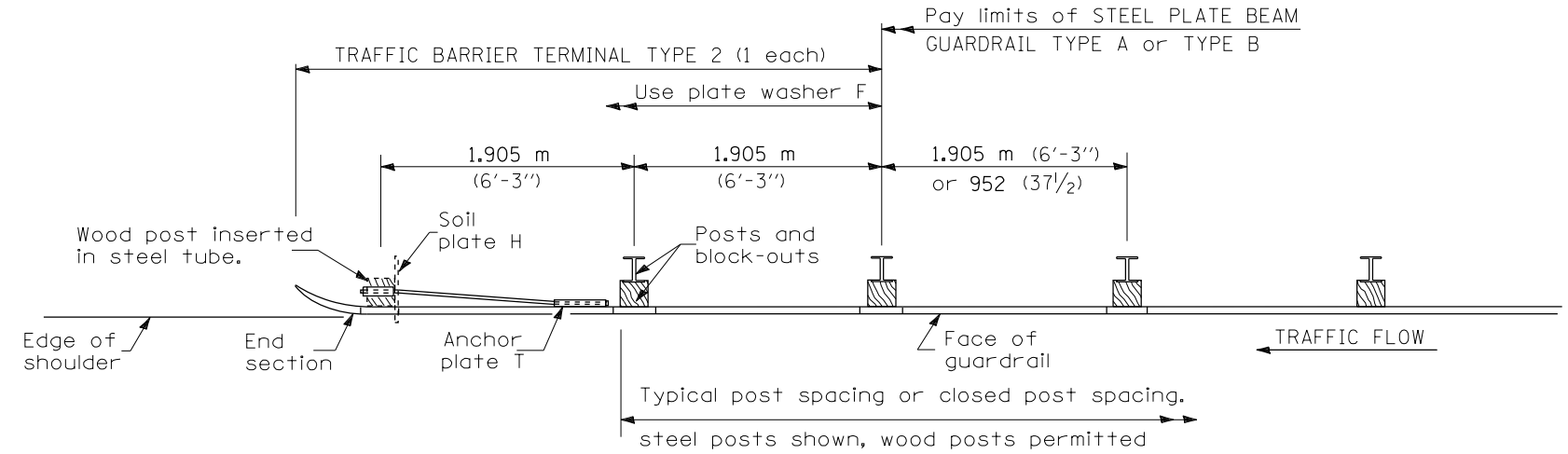
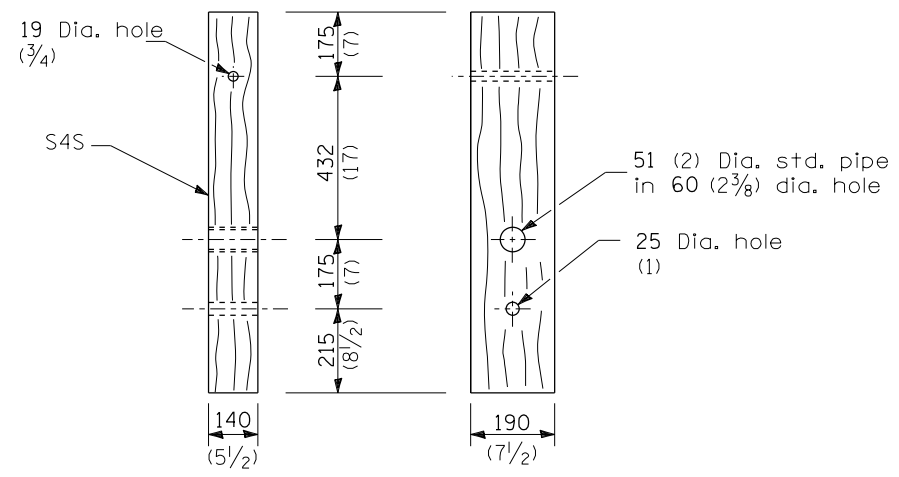


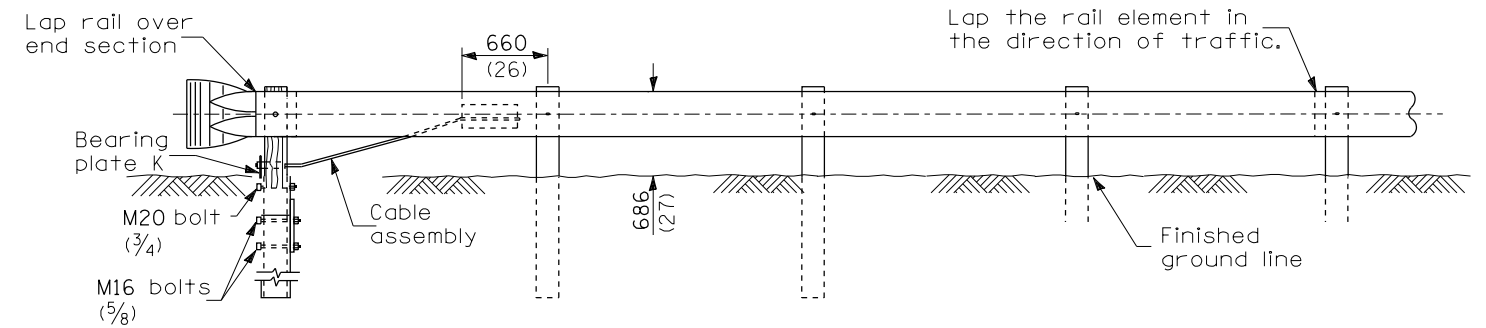
**BEARING PLATE K**



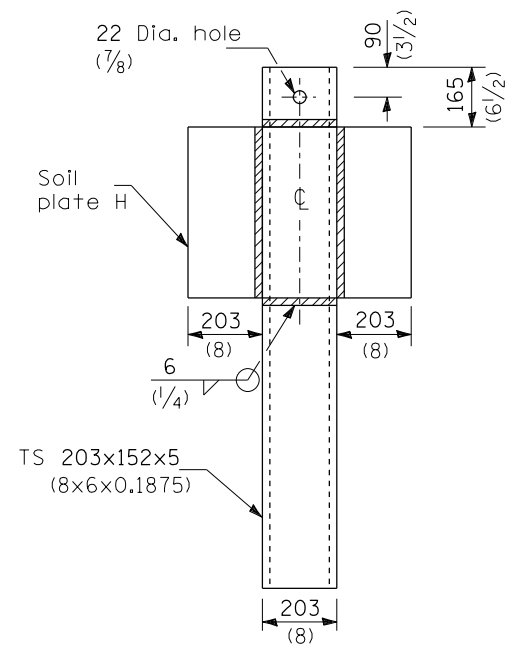
**PLAN**



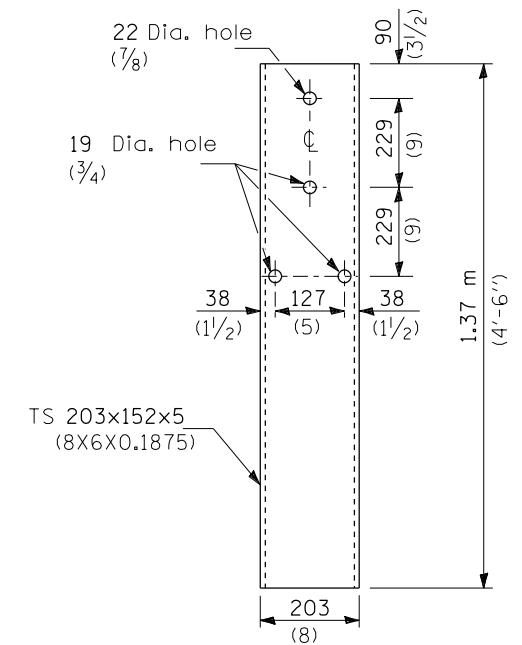
**WOOD POST**



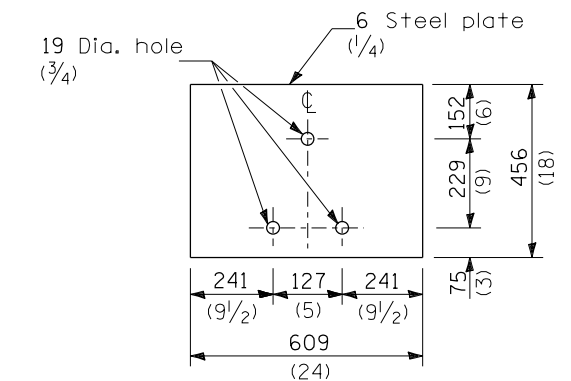
**ELEVATION**



**ALTERNATE SOIL PLATE CONNECTION**



**STEEL TUBE**



**SOIL PLATE H**

**GENERAL NOTES**

- See Standard 630001 for details of guardrail not shown.
- Use plate washer F at all posts.
- The bearing plate K shall be held in position by (2) two eight penny nails driven into the post and bent over the top of the plate.
- All dimensions are in millimeters (inches) unless otherwise shown.