

11-9-12 LETTING ITEM 035

STATE OF ILLINOIS  
DEPARTMENT OF TRANSPORTATION  
DIVISION OF HIGHWAYS

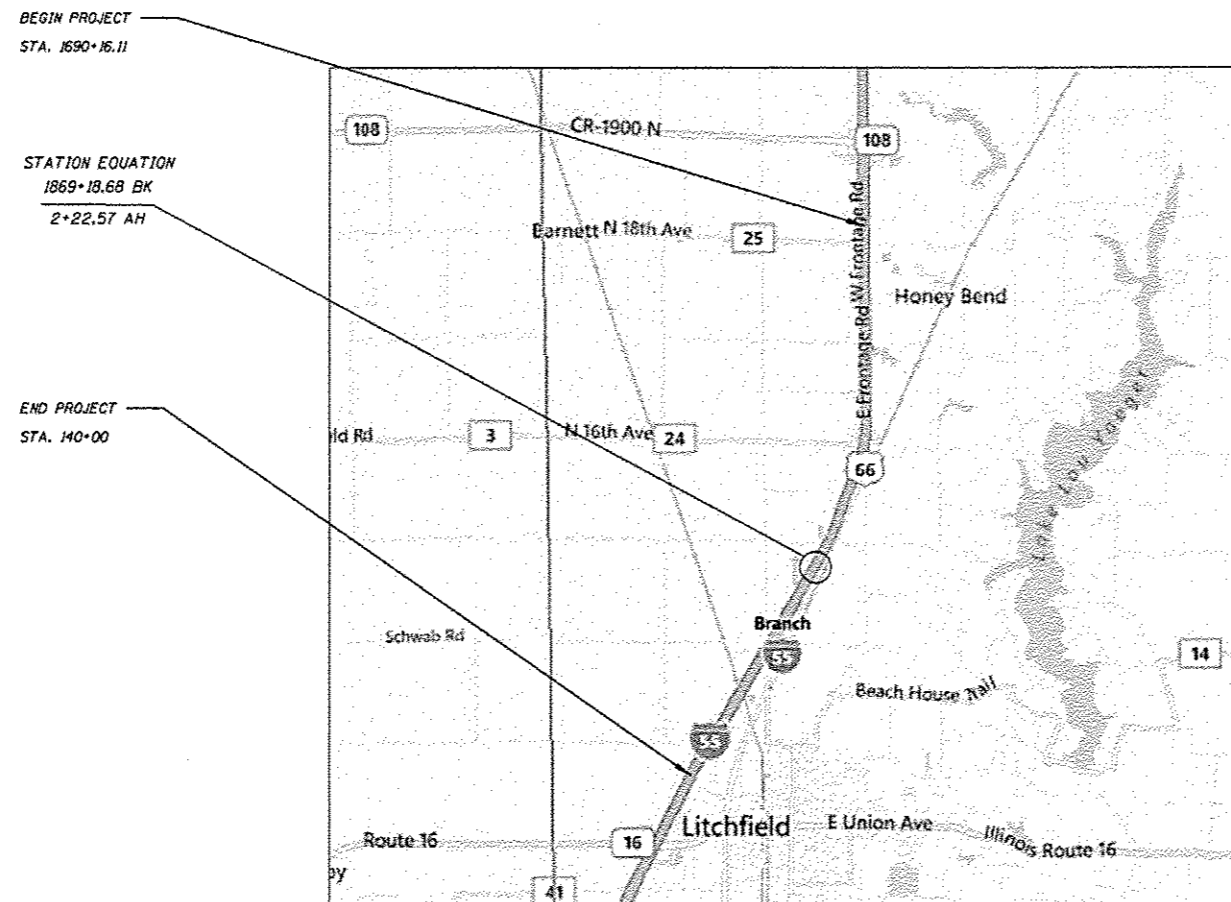
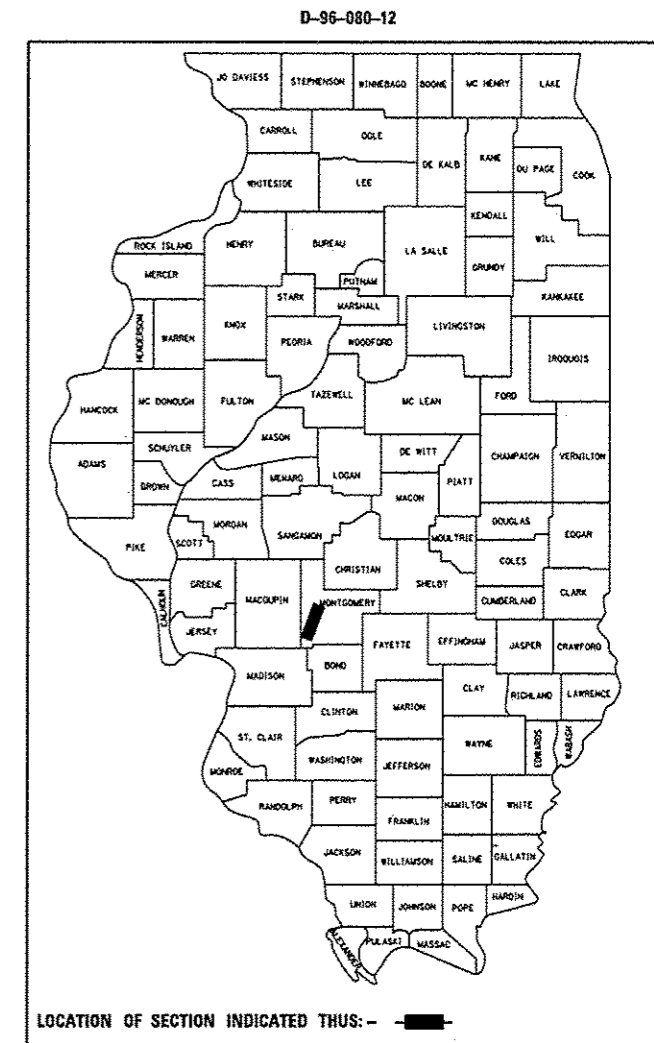
**PROPOSED  
CONTRACT MAINTENANCE**

FAI 55 (I-55)  
SECTION (68-1)I-4, (68-2)I-3  
PAVEMENT JOINT SEAL  
MONTGOMERY COUNTY

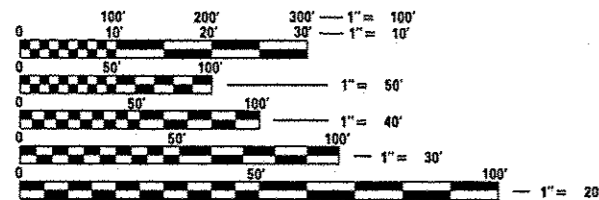
D-96-080-12

FOR INDEX OF SHEETS, SEE SHEET NO. 2

F.A.I. RTE.	SECTION	COUNTY	TOTAL SHEETS	SHEET NO.
55	(68-1)I-4, (68-2)I-3	MONTGOMERY	5	1
FED. ROAD DIST. NO. -		ILLINOIS	CONTRACT NO. 72F62	



A.D.T. 11,600(3,100)



FULL SIZE PLANS HAVE BEEN PREPARED USING STANDARD ENGINEERING SCALES. REDUCED SIZED PLANS WILL NOT CONFORM TO STANDARD SCALES. IN MAKING MEASUREMENTS ON REDUCED PLANS, THE ABOVE SCALES MAY BE USED.

J.U.L.I.E.  
JOINT UTILITY LOCATION INFORMATION FOR EXCAVATION  
1-800-892-0123  
OR 811

PLAN AND CONTRACT TECHNICIAN  
TIMOTHY SHARP (217)782-7743

CONTRACT NO. 72F62

GROSS LENGTH = 31,680 FT = 6.00 MILE

STATE OF ILLINOIS  
DEPARTMENT OF TRANSPORTATION  
DIVISION OF HIGHWAYS

SUBMITTED September 4 20 12  
Roger Z...  
DEPUTY DIRECTOR OF HIGHWAYS, REGION ENGINEER

October 5 20 12  
John D. Baranelli PE/IC  
acting ENGINEER OF DESIGN AND ENVIRONMENT

October 5 20 12  
William R. Fray/IC  
acting DIRECTOR OF HIGHWAYS, CHIEF ENGINEER

**PRINTED BY THE AUTHORITY  
OF THE STATE OF ILLINOIS**

**INDEX**

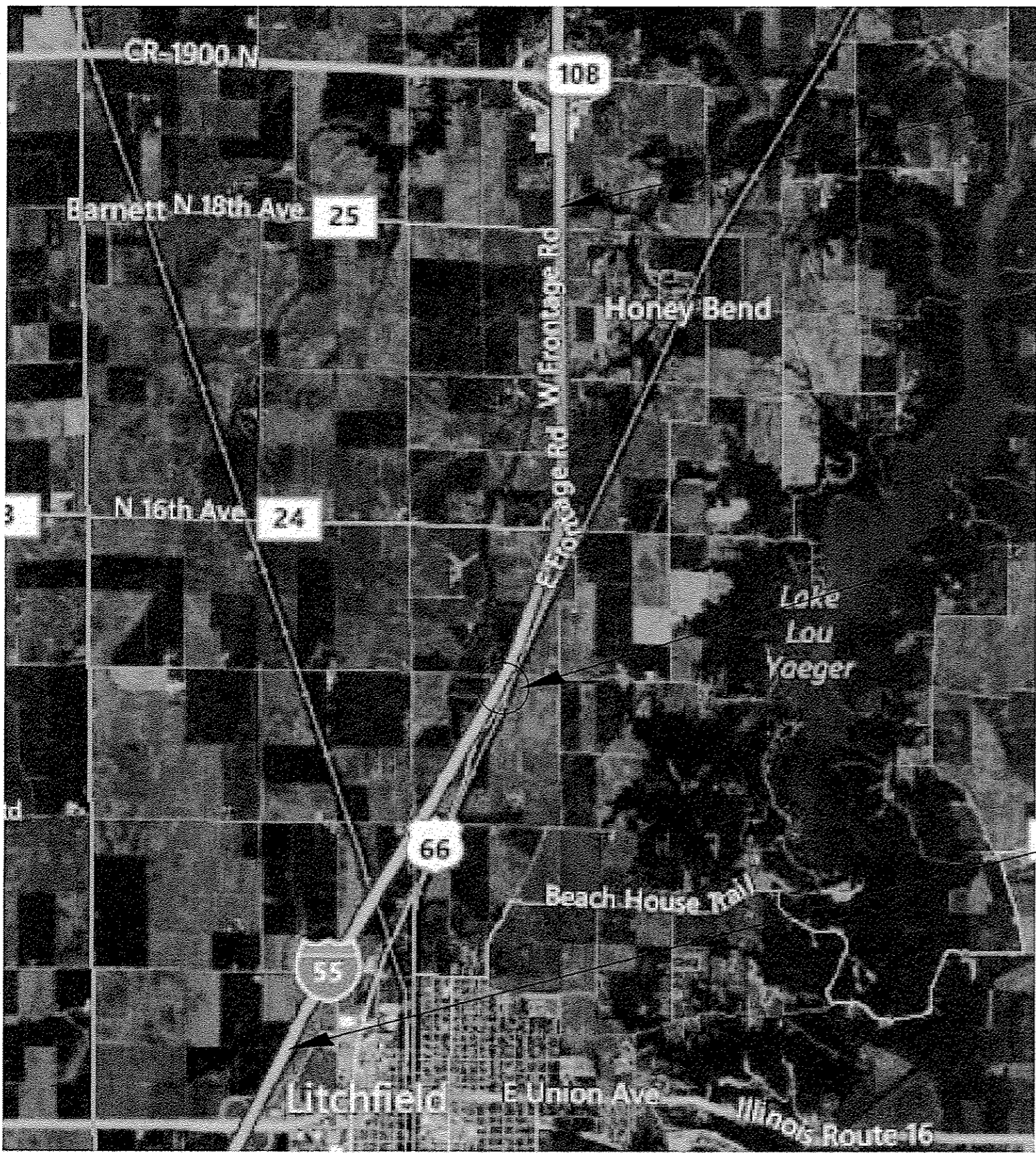
- 1 COVER SHEET
- 2 INDEX / STDS / SIGNATURES
- 3 QUANTITIES
- 4 LOCATION MAP
- 5 CRACK SEALING DETAILS

**STANDARDS**

- 701101-02
- 701106-02
- 701400-05
- 701401-06
- 701411-08
- 701426-04
- 701901-02

<b>STATE OF ILLINOIS DEPARTMENT OF TRANSPORTATION DIVISION OF HIGHWAYS DISTRICT 6</b>	
EXAMINED <u>Aug 30</u> 20 <u>12</u>	
<u>William W. Byers</u> ENGINEER OF OPERATIONS	
EXAMINED <u>AUG 15</u> 20 <u>12</u>	
<u>Jerry L. [Signature]</u> ENGINEER OF PROJECT IMPLEMENTATION	
EXAMINED <u>August 16</u> 20 <u>12</u>	
<u>2RMLI</u> ENGINEER OF PROGRAM DEVELOPMENT	

				CONSTR. CODE
CODE NO.	ITEM	UNIT	TOTAL QUANTITY	ROADWAY
				0005
				RURAL
45100100	CRACK ROUTING (PAVEMENT)	FOOT	63,360	63,360
45100200	CRACK FILLING	POUND	22,200	22,200
67100100	MOBILIZATION	L SUM	1	1
70100800	TRAFFIC CONTROL AND PROTECTION, STANDARD 701401	L SUM	1	1
70100420	TRAFFIC CONTROL AND PROTECTION, STANDARD 701411	EACH	2	2
70200100	NIGHTTIME WORK ZONE LIGHTING	L SUM	1	1



BEGIN PROJECT  
STA. 1690+16.11



STATION EQUATION  
 $\frac{1869+18.68 \text{ BK}}{2+22.57 \text{ AH}}$

END PROJECT  
STA. 140+00

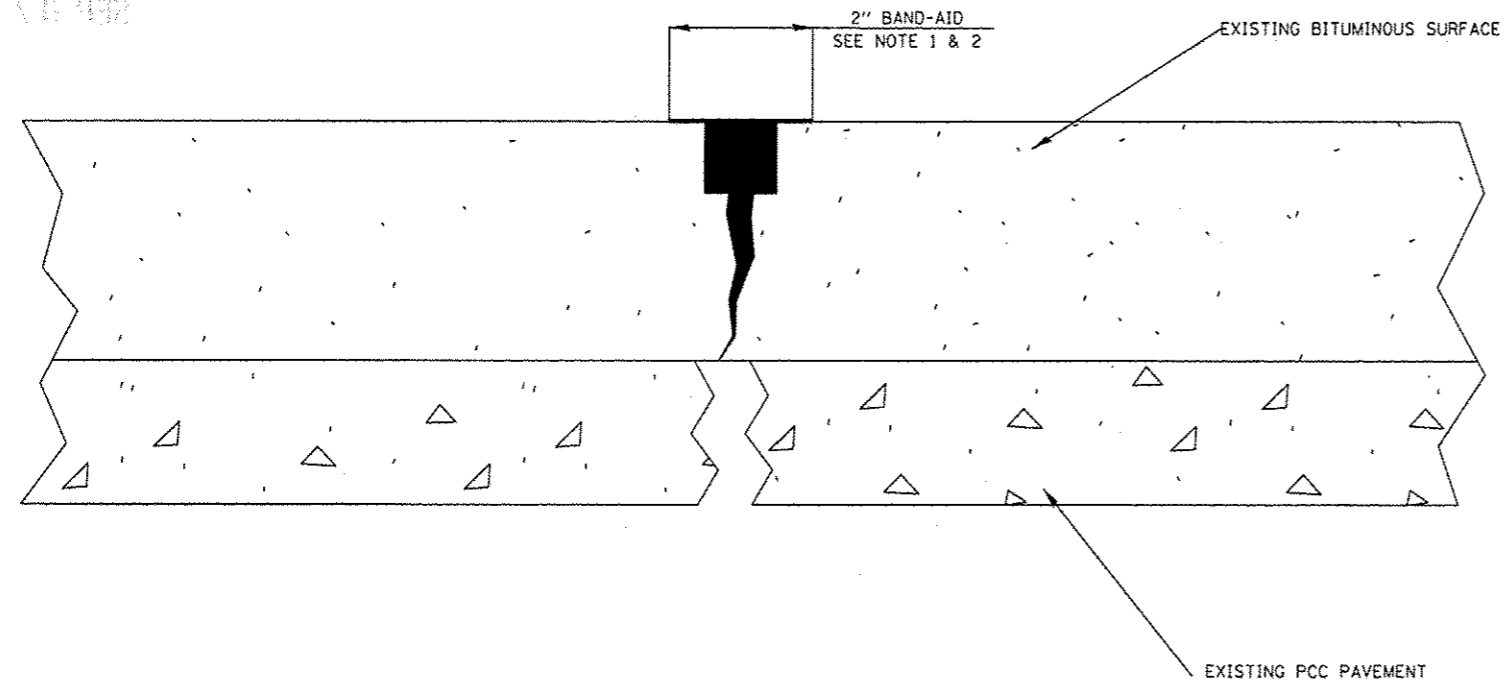
FILE NAME *	USER NAME * Sharptd	DESIGNED -	REVISED -
S:\CONTRMAINT\CAD\72F62\4 PROJECT LOCATION.dgn		DRAWN -	REVISED -
Default	PLOT SCALE = 1.030000 "/> <td>CHECKED -</td> <td>REVISED -</td>	CHECKED -	REVISED -
	PLOT DATE = Aug-02-2012 00:34:09AM	DATE -	REVISED -

**STATE OF ILLINOIS  
DEPARTMENT OF TRANSPORTATION**

PROJECT LOCATION			
SCALE:	SHEET	OF SHEETS	STA. TO STA.

F.A.I. RTE.	SECTION	COUNTY	TOTAL SHEETS	SHEET NO.
55	(68-1) 1-4, (68-2) 1-3	MONTGOMERY	5	4
CONTRACT NO. 72F62				
ILLINOIS FED. AID PROJECT				

WDS 7 6 2012



LONGITUDINAL AND CENTERLINE  
JOINT CRACKS  
(NOT DRAWN TO SCALE)

**NOTES:**

1. ROUT OR SAW TO  $\frac{3}{4}$ " WIDE BY  $\frac{3}{4}$ " DEEP (1:1 RATIO).
2. SLIGHTLY OVERFILL WITH SEALANT. IMMEDIATELY SQUEEGEE IN A SEPARATE OPERATION TO PROVIDE A 2" WIDE "BAND-AID" EFFECT FLUSH WITH PAVEMENT SURFACE WITH EDGES FEATHERED OUT.
3. THE "BAND-AID" WIDTH SHALL BE REDUCED OR ELIMINATED IN AREAS ADJACENT TO EXISTING PAVEMENT MARKINGS.
4. CRACK ROUTING AND FILLING SHALL CONFORM TO SECTION 451 OF THE STANDARD SPECIFICATIONS.

FILE NAME * S:\CONTRMAINT.CAD\72F62\5 CRACK SEAL	USER NAME * Shorstd	DESIGNED -	REVISED -	<b>STATE OF ILLINOIS DEPARTMENT OF TRANSPORTATION</b>	<b>CRACK SEALING DETAILS</b>			F.A.I. RTE.	SECTION	COUNTY	TOTAL SHEETS	SHEET NO.
DETAILS.dgn	DRAWN -	REVISED -	55					(68-1) I-4, (68-2) I-3	MONTGOMERY	5	5	
PLOT SCALE * 40.0000' / 1"	CHECKED -	REVISED -	CONTRACT NO. 72F62									
PLOT DATE * Aug-30-2012 09:55:09AM	DATE -	REVISED -	SCALE:		SHEET	OF	SHEETS	STA.	TO STA.	ILLINOIS FED. AID PROJECT		