

F.A.P. RTE.	SECTION	COUNTY	TOTAL SHEETS	SHEET NO.
757	(20) I	PIKE/SCOTT	17	1
		ILLINOIS	CONTRACT NO. 72F75	

STATE OF ILLINOIS  
DEPARTMENT OF TRANSPORTATION

DIVISION OF HIGHWAYS

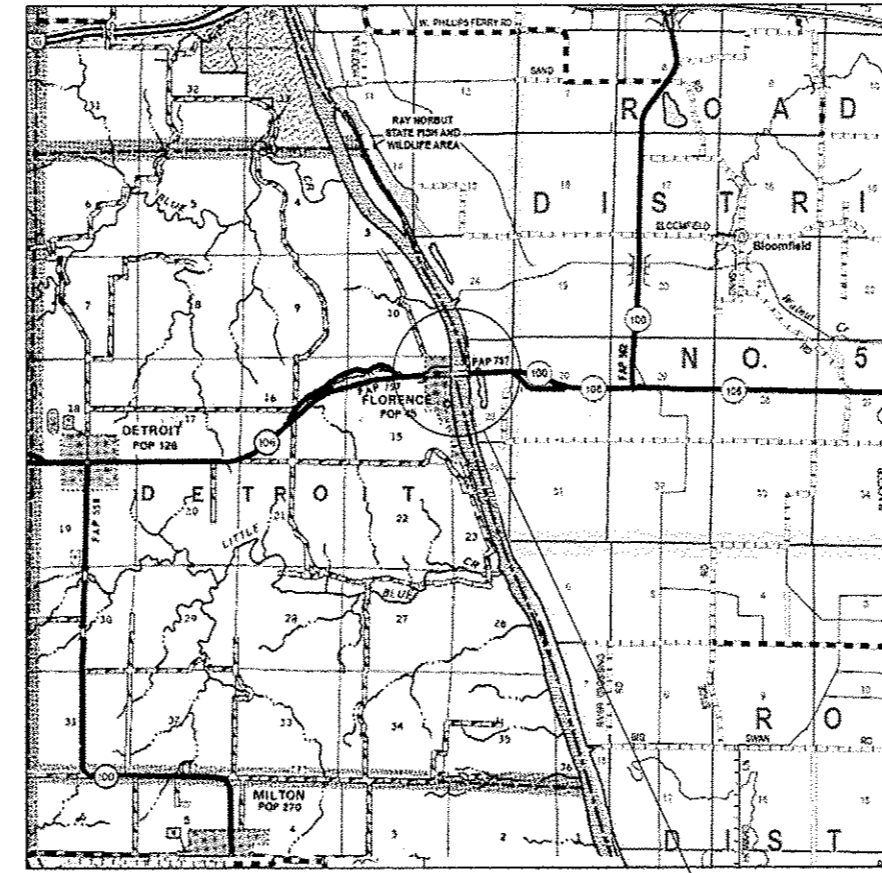
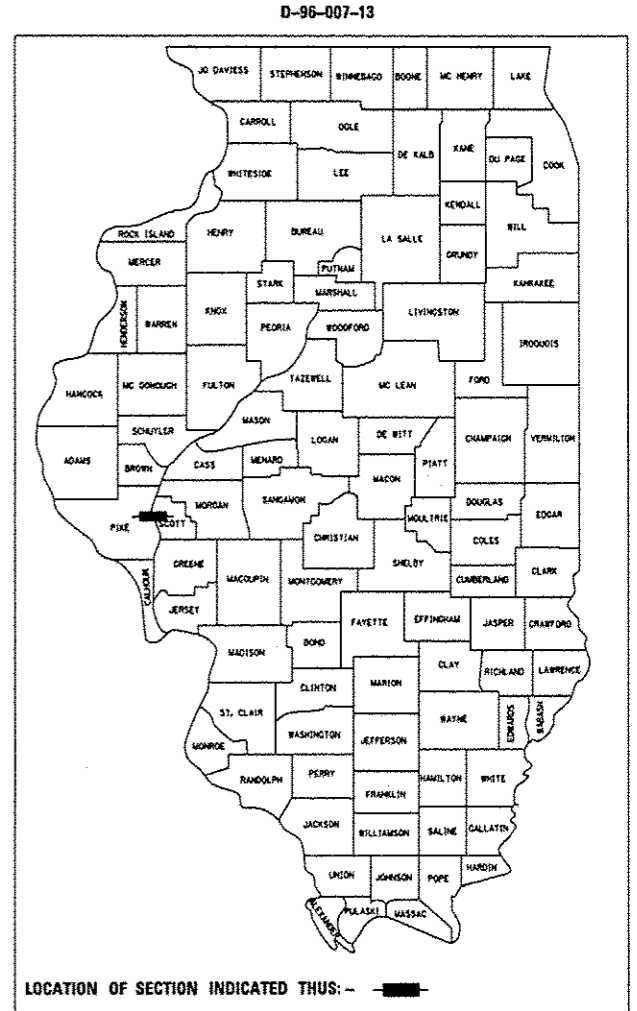
**PROPOSED  
HIGHWAY PLANS**

FAP ROUTE 757 (IL 106)  
SECTION (20) I  
ILLINOIS RIVER BRIDGE AT E. EDGE OF FLORENCE  
EMERGENCY BRIDGE REPAIR  
PIKE/SCOTT COUNTY

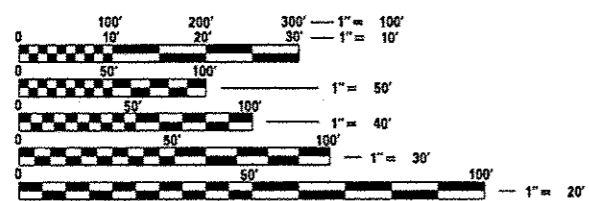
C-96-007-13

INDEX OF SHEETS

SHEET NO.	DESCRIPTION
1	COVER SHEET
2	SUMMARY OF QUANTITIES
3 - 17	BRIDGE PLANS



PROJECT LOCATION  
SN 086-0001



FULL SIZE PLANS HAVE BEEN PREPARED USING STANDARD ENGINEERING SCALES. REDUCED SIZED PLANS WILL NOT CONFORM TO STANDARD SCALES. IN MAKING MEASUREMENTS ON REDUCED PLANS, THE ABOVE SCALES MAY BE USED.

J.U.L.I.E.  
JOINT UTILITY LOCATION INFORMATION FOR EXCAVATION  
1-800-892-0123  
OR 811

SENIOR TEAM ENGINEER VINCE MADONIA 217-785-9046  
TEAM ENGINEER JAY EDWARDS 217-785-5321

CONTRACT NO. 72F75



STATE OF ILLINOIS  
DEPARTMENT OF TRANSPORTATION  
DIVISION OF HIGHWAYS

SUBMITTED October 22, 2012  
Roger L. Driskell  
DEPUTY DIRECTOR OF HIGHWAYS, REGION ENGINEER

October 5, 2012  
John D. Baranelli, PE, LE  
acting ENGINEER OF DESIGN AND ENVIRONMENT

October 5, 2012  
William F. Frey, LE  
acting DIRECTOR OF HIGHWAYS, CHIEF ENGINEER

PRINTED BY THE AUTHORITY  
OF THE STATE OF ILLINOIS