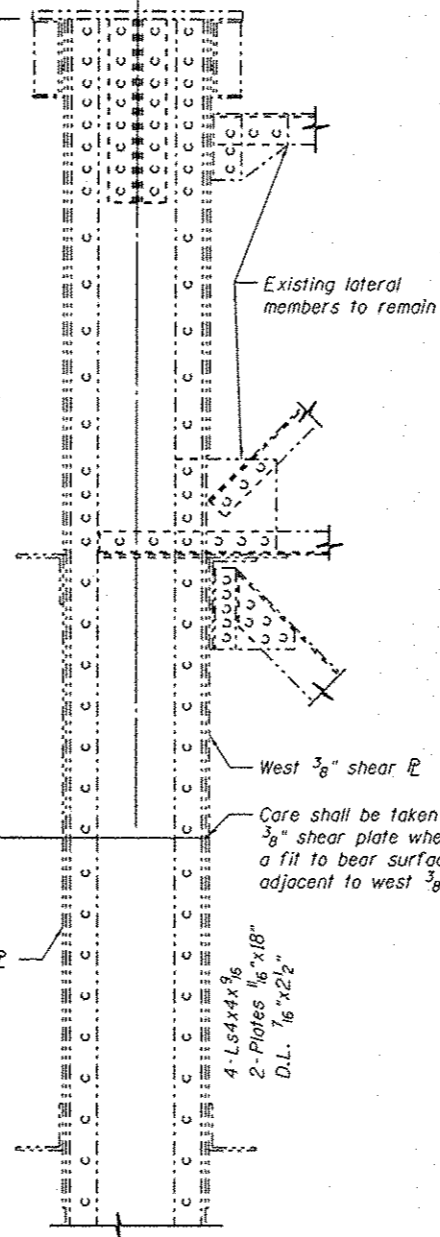


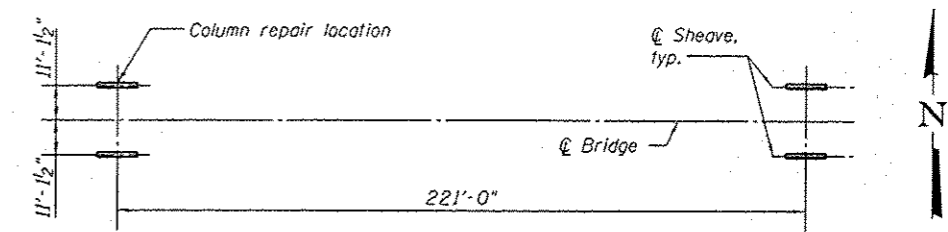
**ELEVATION - EXISTING VERTICAL TOWER POST**  
(Looking west)

Remove and reinstall inspection walkway as required for installation of new tower post section

- Existing cap material:**
- 1-  $\bar{C}$  1 1/8" x 12" x 2'-3" (finish both sides to 1")
  - 2- Seat Ls6x4x3/8
  - 2- Shelf Ls4x4x3/8
  - 4- Stiff. Ls3 1/2 x 3 1/2 x 3/8
  - 4- Conn. Ls3 1/2 x 3 1/2 x 3/8
  - 2- Fills 3/8" x 3 1/2"
  - 2- Stiff Ls3 1/2 x 3 1/2 x 3/8
  - 1- Fill 3/8" x 3 1/2"
  - 1- Diaph.  $\bar{C}$  3/8" x 12"
  - 4- Diaph. Ls3 1/2 x 3 1/2 x 3/8



**SECTION A-A**



**LOCATION PLAN**

**TOWER POST REPAIR PROCEDURE:**

(To be completed after sheave has been removed)

1. Remove all fasteners connecting the east 3/8" shear plate.
2. Remove the east 3/8" shear plate. Cut new handholes using a hole saw and grind surfaces to meet ANSI 500 microinch surface roughness.
3. Remove all fasteners connecting the portion of the tower post to be removed to the existing steel remaining in place.
4. Remove the indicated portion of the tower post.
5. Prepare top surface of tower post remaining in place to provide a fit to bear surface with the new portion of the tower post.
6. Clean and prime paint all faying surfaces and install new portion of the tower post and splice to existing tower post.
7. Re-connect all lateral members to new tower post.
8. Reinstall existing east 3/8" shear plate.
9. Touchup paint any new steel and paint exposed existing steel surfaces as directed by the Engineer.

**Notes:**  
For additional details, see sheet nos. 9 and 10 of 15.

Inspection access walkway at top of tower may need to be removed prior to performing tower post repair. The removal limits shall be determined by the Contractor and approved by the Engineer. After completion of the tower post repair, inspection access walkway must be reinstalled in-kind.



USER NAME *	DESIGNED TS	REVISIONS
PLOT SCALE *	CHECKED DBI	REVISIONS
PLOT DATE *	DRAWN DTP	REVISIONS
	CHECKED DBI	REVISIONS

**STATE OF ILLINOIS**  
**DEPARTMENT OF TRANSPORTATION**

**TOWER POST REPLACEMENT DETAILS - 1**  
**STRUCTURE NO. 086-0001**

SHEET NO. 8 OF 15 SHEETS

F.A.P. RTE.	SECTION	COUNTY	TOTAL SHEETS	SHEET NO.
757	(20) I	PIKE/SCOTT	17	10
			CONTRACT NO. 72F75	
ILLINOIS FED. AID PROJECT				