

F.A.P. RTE.	SECTION	COUNTY	TOTAL SHEETS	SHEET NO.
782	D9 CM BRIDGE REPAIR 2012-3	GALLATIN	14	1
ILLINOIS			CONTRACT NO. 78253	

STATE OF ILLINOIS
DEPARTMENT OF TRANSPORTATION
DIVISION OF HIGHWAYS

**PROPOSED
HIGHWAY PLANS**

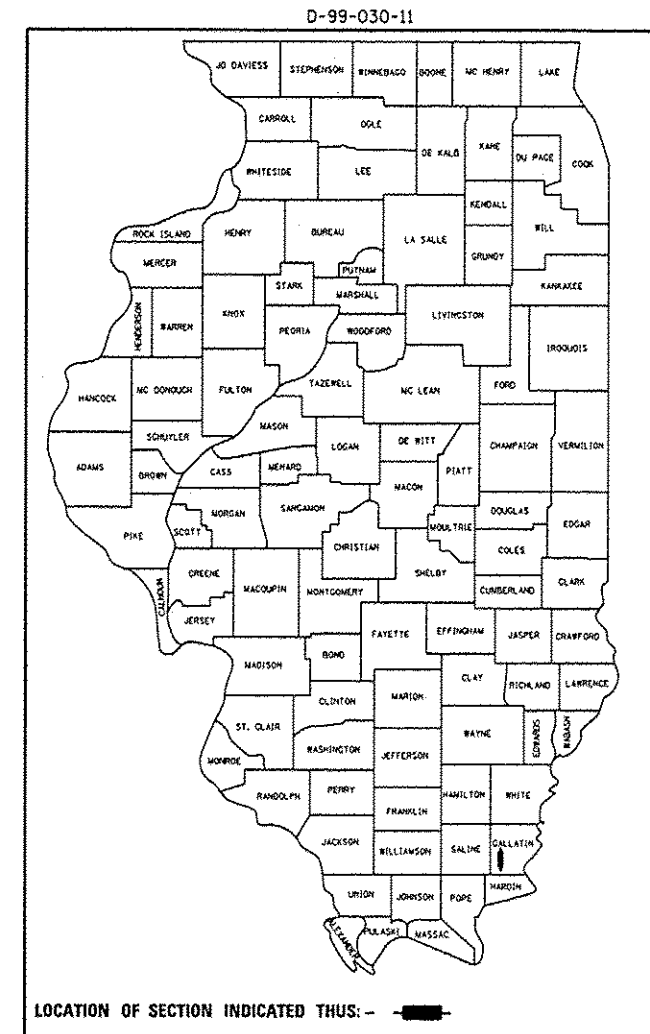
F.A.P. 782 (IL 1) OVER LAWLER DITCH
STRUCTURE NO. 030-0020

F.A.P. 782 (IL 1) OVER SALINE RIVER
STRUCTURE NO. 030-0021

**D9 CM BRIDGE REPAIR 2012-3
BRIDGE REPAIR, APPROACH SURFACE, CONCRETE SLOPEWALL REPAIR, INLETS
GALLATIN COUNTY**

C-99-041-11

FOR INDEX OF SHEETS, SEE SHEET NO. 2
FOR SUMMARY OF QUANTITIES, SEE SHEET NO. 3

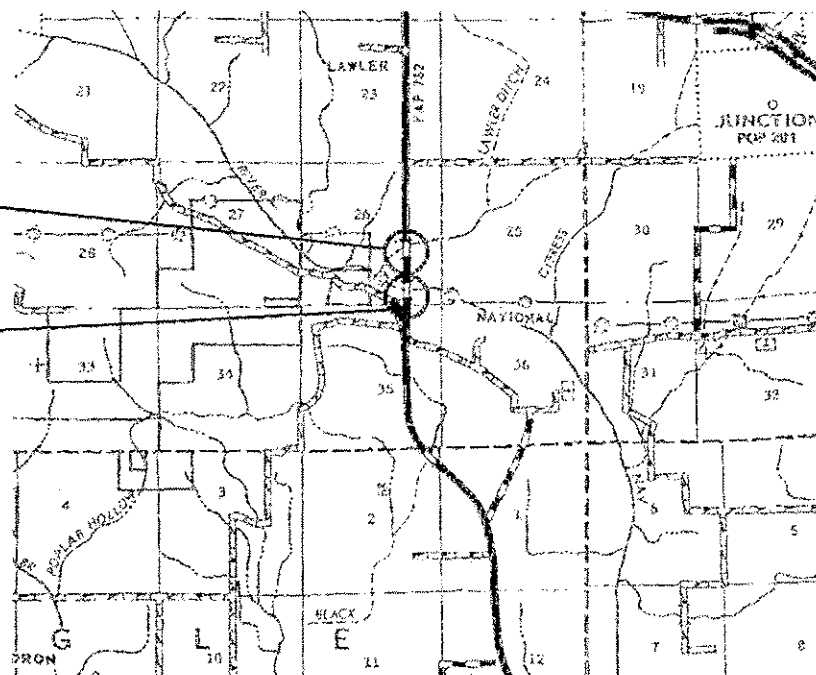


STRUCTURE NO. 030-0020
2011 ADT = 2300
INVENTORY RATING: HS 27.7
OPERATING RATING: 46.3
NO POSTING
EQUALITY TOWNSHIP

STRUCTURE NO. 030-0021
2011 ADT = 2300
INVENTORY RATING: 22.5
OPERATING RATING: 37.6
NO POSTING
EQUALITY TOWNSHIP

IMPROVEMENT LOCATION
STRUCTURE NO. 030-0020
IL 1 OVER LAWLER DITCH

IMPROVEMENT LOCATION
STRUCTURE NO. 030-0021
IL 1 OVER SALINE RIVER



J.U.L.I.E.
JOINT UTILITY LOCATION INFORMATION FOR EXCAVATION
1-800-892-0123
OR 811

PROJECT ENGINEER: DAVID PICHE 618-351-5227
DESIGNER: RITA GAUTNEY

CONTRACT NO. 78253

STATE OF ILLINOIS
DEPARTMENT OF TRANSPORTATION
DIVISION OF HIGHWAYS

SUBMITTED Aug 31 20 12

Orren Osman
DEPUTY DIRECTOR OF HIGHWAYS, REGION ENGINEER

October 5 20 12
John D. Baranzelli, P.E.
acting ENGINEER OF DESIGN AND ENVIRONMENT

October 5 20 12
William R. Frey, Jr.
acting DIRECTOR OF HIGHWAYS, CHIEF ENGINEER

**PRINTED BY THE AUTHORITY
OF THE STATE OF ILLINOIS**