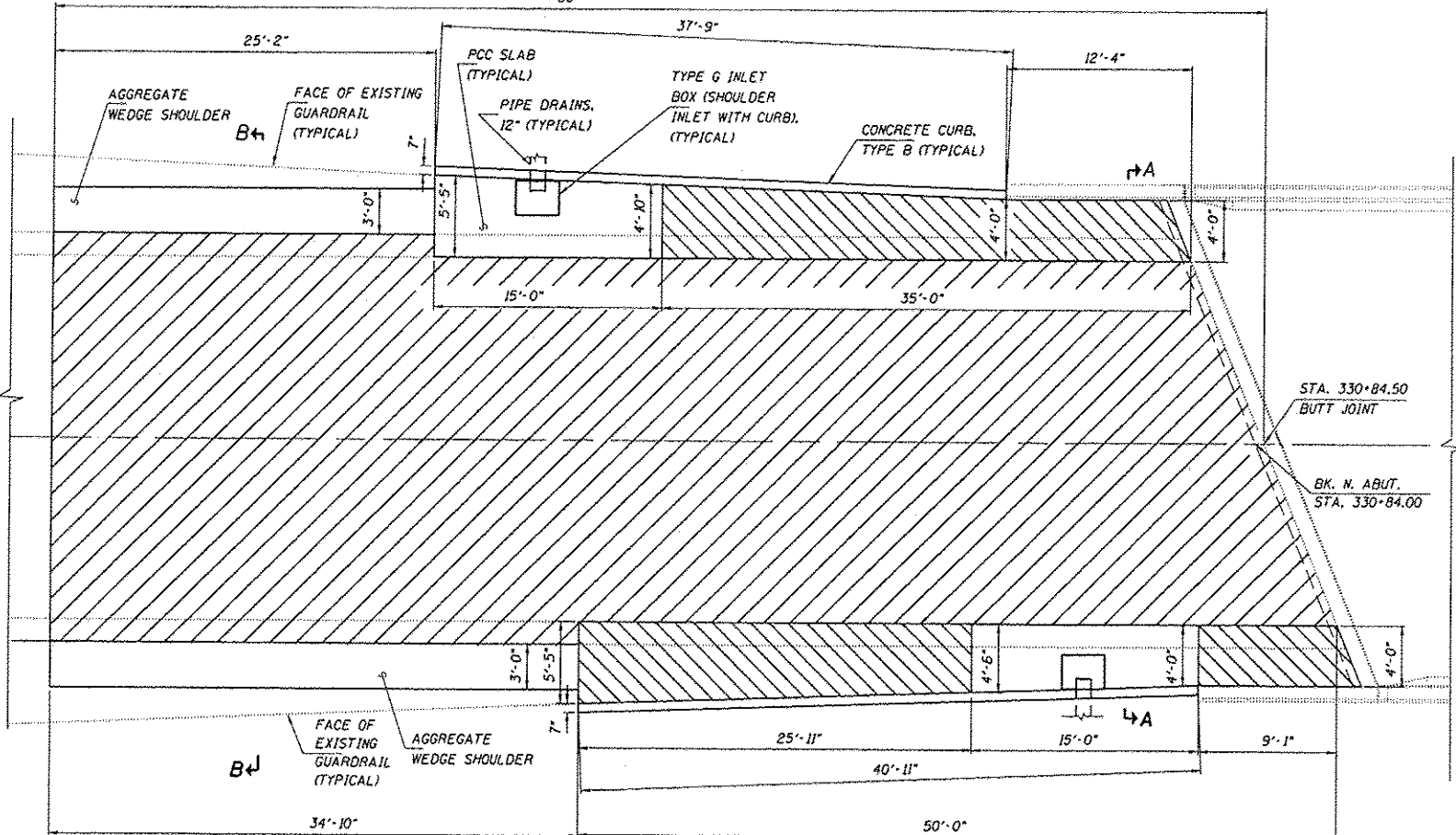
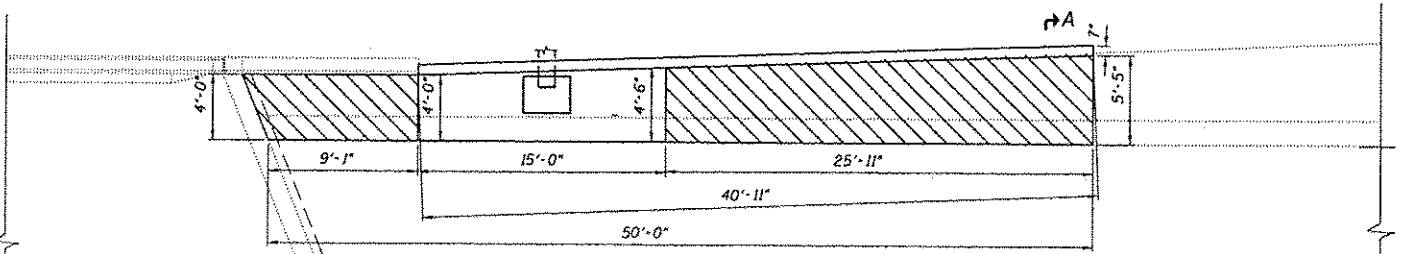




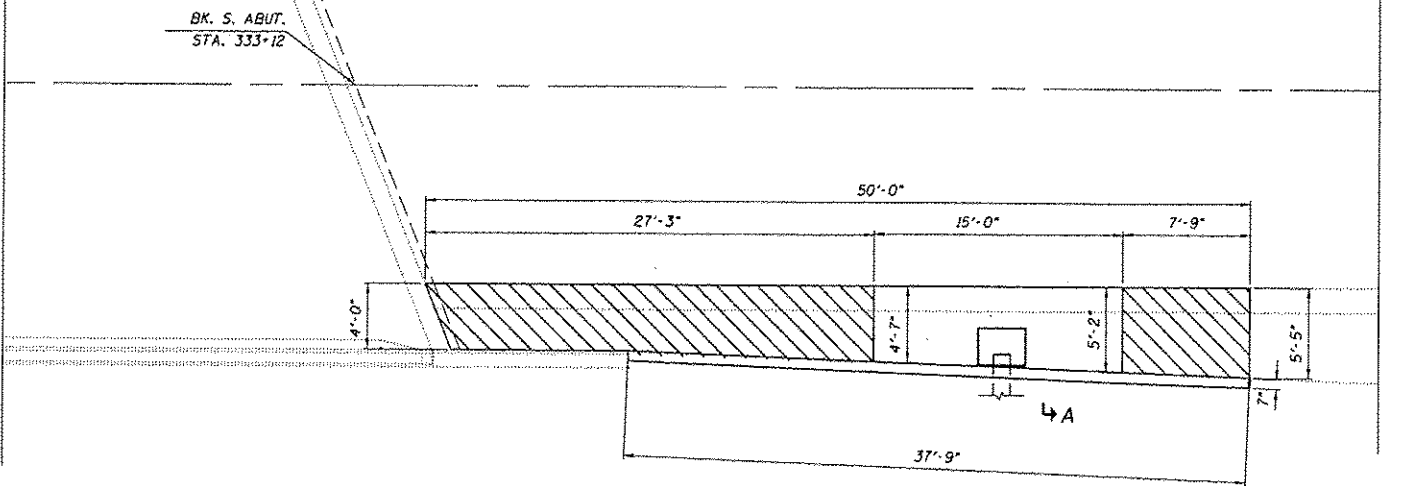
* 0.2% AT STA. 330+04.5 BUTT JT.
0.7% AT STA. 330+44
1.0% AT STA. 330+84.5 BUTT JT.



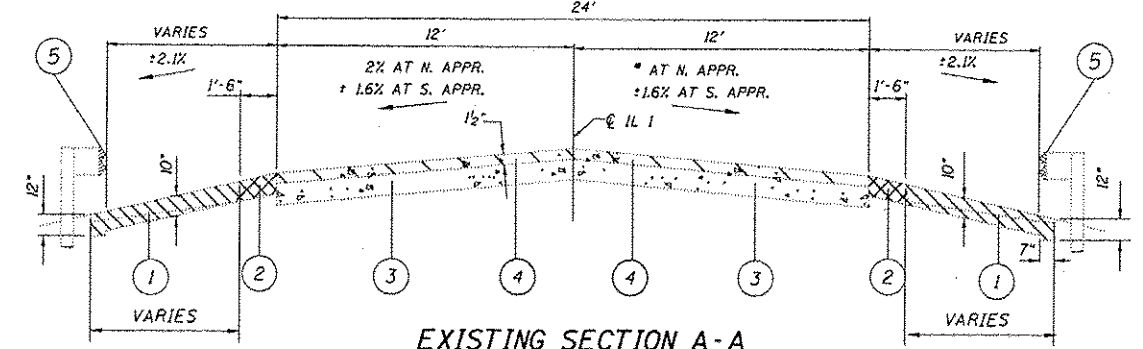
PLAN NORTH APPROACH



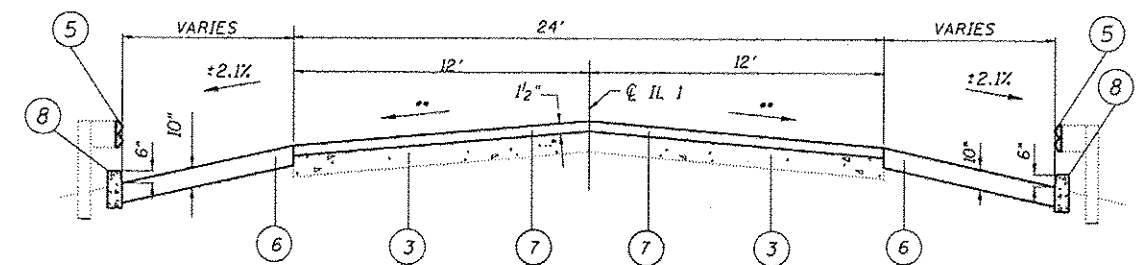
BK. S. ABUT.
STA. 333+12



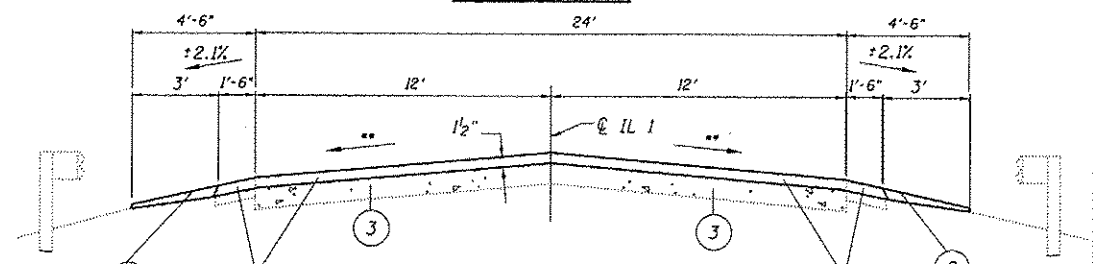
PLAN SOUTH APPROACH



EXISTING SECTION A-A APPROACHES (SHOWING REMOVAL)



PROPOSED SECTION A-A APPROACHES



PROPOSED SECTION B-B NORTH APPR.

PLAN LEGEND

- HMA SHOULDERS, 10"
- PRIME COAT
- LEVELING BINDER, MACHINE METHOD
- HOT-MIX ASPHALT SURFACE COURSE, MIX C, N90

PAINT PAVEMENT MARKING - 4"

LOCATION	COLOR	QUANTITY (FOOT)
CENTERLINE	YELLOW	90
EDGE LINES	WHITE	716

SECTION LEGEND

- 1 EARTH EXCAVATION
- 2 PAVED SHOULDER REMOVAL (8")
- 3 EXISTING 9" PCC PAVEMENT
- 4 PORTLAND CEMENT CONCRETE SURFACE REMOVAL - BUTT JOINT, ON N. APPR. ONLY
- 5 REMOVE AND REERECT RAIL ELEMENT OF EXISTING GUARDRAIL, TYPICAL
- 6 HMA SHOULDERS, 10" OR SHOULDER INLET WITH CURB
- 7 HMA SURFACE COURSE (1 1/2") & VARIABLE DEPTH LEVELING BINDER ON NORTH APPROACH ONLY
- 8 CONCRETE CURB, TYPE B (6")
- 9 AGGREGATE WEDGE SHOULDER

NOTES:
SEE PROFILE AND BUTT JOINT DETAIL ON SHEET 8 OF 14.
SEE STANDARD 606001 FOR CURB DETAILS NOT SHOWN.
SEE SPECIAL PROVISION "INLET BOX, TYPE G".
THE COST OF EXCAVATION AND BACK FILLING FOR INSTALLATION OF PIPE DRAINS IS INCLUDED IN PIPE DRAIN 12".
IN ADDITION TO THE THRUST BLOCK SHOWN ON STANDARD 610001, TWO THRUST BLOCKS SHALL BE INSTALLED AT THE ONE-THIRD POINTS ALONG THE PIPE LENGTH.

FILE NAME : c:\p\work\l\widot\goumeyr\k\d0253215\03	USER NAME : goumeyr	DESIGNED -	REVISED -
8828.0021-sh.dgn		DRAWN -	REVISED -
PLOT SCALE = 1/32" = 1' / in.		CHECKED -	REVISED -
PLOT DATE = 9/27/2012		DATE -	REVISED -

STATE OF ILLINOIS
DEPARTMENT OF TRANSPORTATION

SHOULDERS, APPROACH OVERLAY
S.N. 030-0020 OVER LAWLER DITCH

SCALE: _____	SHEET NO. _____ OF _____ SHEETS	STA. _____ TO STA. _____	F.A.P. RTE. 782	SECTION DS CM BRIDGE REPAIR 2012-3	COUNTY GALLATIN	TOTAL SHEETS 14	SHEET NO. 7
--------------	---------------------------------	--------------------------	-----------------	------------------------------------	-----------------	-----------------	-------------

CONTRACT NO. 78253
ILLINOIS FED. AID PROJECT