

STATE OF ILLINOIS
DEPARTMENT OF TRANSPORTATION
DIVISION OF HIGHWAYS

**PROPOSED
HIGHWAY PLANS**

F.A.P. 782 (IL 1) OVER LAWLER DITCH
STRUCTURE NO. 030-0020
F.A.P. 782 (IL 1) OVER SALINE RIVER
STRUCTURE NO. 030-0021

D9 CM BRIDGE REPAIR 2012-3
BRIDGE REPAIR, APPROACH SURFACE, CONCRETE SLOPEWALL REPAIR, INLETS
GALLATIN COUNTY
C-99-041-11

F.A.P. RTE.	SECTION	COUNTY	TOTAL SHEETS	SHEET NO.
782	D9 CM BRIDGE REPAIR 2012-3	GALLATIN	14	1
ILLINOIS			CONTRACT NO. 78253	

FOR INDEX OF SHEETS, SEE SHEET NO. 2
FOR SUMMARY OF QUANTITIES, SEE SHEET NO. 3

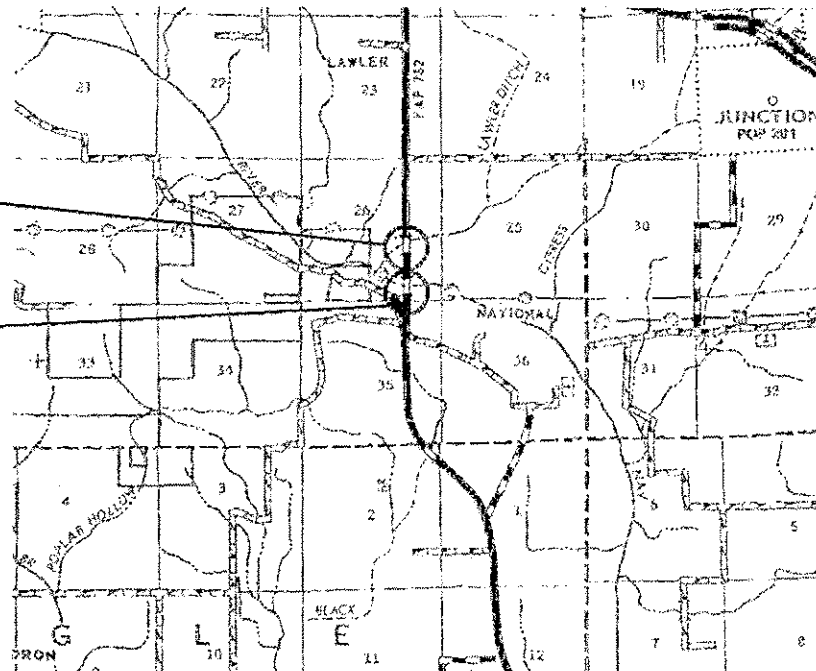


STRUCTURE NO. 030-0020
2011 ADT = 2300
INVENTORY RATING: HS 27.7
OPERATING RATING: 46.3
NO POSTING
EQUALITY TOWNSHIP

STRUCTURE NO. 030-0021
2011 ADT = 2300
INVENTORY RATING: 22.5
OPERATING RATING: 37.6
NO POSTING
EQUALITY TOWNSHIP

IMPROVEMENT LOCATION
STRUCTURE NO. 030-0020
IL 1 OVER LAWLER DITCH

IMPROVEMENT LOCATION
STRUCTURE NO. 030-0021
IL 1 OVER SALINE RIVER



J.U.L.I.E.
JOINT UTILITY LOCATION INFORMATION FOR EXCAVATION
1-800-892-0123
OR 811

PROJECT ENGINEER: DAVID PICHE 618-351-5227
DESIGNER: RITA GAUTNEY

CONTRACT NO. 78253

STATE OF ILLINOIS
DEPARTMENT OF TRANSPORTATION
DIVISION OF HIGHWAYS

SUBMITTED Aug 31 20 12

Orren Osman
DEPUTY DIRECTOR OF HIGHWAYS, REGION ENGINEER

October 5 20 12
John D. Baranzelli, P.E.
acting ENGINEER OF DESIGN AND ENVIRONMENT

October 5 20 12
William R. Frey, Jr.
acting DIRECTOR OF HIGHWAYS, CHIEF ENGINEER

PRINTED BY THE AUTHORITY
OF THE STATE OF ILLINOIS

INDEX OF SHEETS

- 1 COVER SHEET
- 2 SIGNATURES, INDEX OF SHEETS, STANDARDS, GENERAL NOTES, HMA MIX DESIGN
- 3 SUMMARY OF QUANTITIES
- 4 030-0020 PLAN & ELEVATION, DRAIN LOCATIONS
- 5 030-0020 DRAIN EXTENSION & ELIMINATION DETAILS
- 6 030-0020 SLOPEWALL REPAIR, JOINT SEALER DETAILS
- 7 030-0020 APPROACH OVERLAY & SHOULDERS
- 8 030-0020 APPROACH PROFILE, BUTT JOINT DETAIL
- 9 030-0020 DRAINAGE IMPROVEMENTS
- 10 030-0021 PLAN & ELEVATION, DRAIN LOCATIONS
- 11 030-0021 DRAIN EXTENSION & ELIMINATION DETAILS
- 12 030-0021 SLOPEWALL REPAIR, JOINT SEALER DETAILS
- 13 030-0021 SHOULDERS
- 14 030-0021 DRAINAGE IMPROVEMENT

STANDARDS

- 000001-05 STANDARD SYMBOLS, ABBREVIATIONS AND PATTERNS
- 420001-07 PAVEMENT JOINTS
- 482006-03 HMA SHOULDER ADJACENT TO RIGID PAVEMENT
- 483001-04 PCC SHOULDER
- 542401-01 METAL END SECTION FOR PIPE CULVERTS
- 606001-04 CONCRETE CURB TYPE B
- 610001-06 SHOULDER INLET WITH CURB
- 701001-02 OFF-ROAD, 2L, 2W, MINIMUM 15' TO PAVEMENT EDGE
- 701006-03 OFF-ROAD, 2L, 2W, 2' TO 15' TO PAVEMENT EDGE
- 701201-04 LANE CLOSURE, 2L, 2W, DAY ONLY
- 701301-04 LANE CLOSURE, 2L, 2W, SHORT-TIME OPERATIONS
- 701901-01 TRAFFIC CONTROL DEVICES
- 780001-02 TYPICAL PAVEMENT MARKINGS

GENERAL NOTES

PLAN DIMENSIONS AND DETAILS RELATIVE TO EXISTING STRUCTURE HAVE BEEN TAKEN FROM EXISTING PLANS AND ARE SUBJECT TO NOMINAL CONSTRUCTION VARIATIONS. IT SHALL BE THE CONTRACTOR'S RESPONSIBILITY TO VERIFY SUCH DIMENSIONS AND DETAILS IN THE FIELD AND MAKE NECESSARY APPROVED ADJUSTMENTS PRIOR TO CONSTRUCTION OR ORDERING OF MATERIALS. SUCH VARIATIONS SHALL NOT BE CAUSE FOR ADDITIONAL COMPENSATION FOR A CHANGE IN THE SCOPE OF THE WORK; HOWEVER, THE CONTRACTOR WILL BE PAID FOR THE QUANTITY ACTUALLY FURNISHED AT THE UNIT PRICE BID FOR THE WORK.

FACTORS USED FOR ESTIMATING PLAN QUANTITIES ARE AS FOLLOWS AND SHALL NOT BE USED FOR THE BASIS OF FINAL QUANTITIES:

ALL BITUMINOUS CONCRETE	2.016 TONS/CU. YD.
ALL AGGREGATE	2.05 TONS/CU. YD.
BITUMINOUS MATERIALS:	
ON PAVEMENT	0.09 GAL./SQ. YD.
ON AGGREGATE SURFACE	0.32 GAL./SQ. YD.
AGGREGATE (PRIME COAT)	0.0015 TONS/SQ. YD.

EARTHWORK COMPACTION SHALL BE TO THE SATISFACTION OF THE ENGINEER.

FORMS FOR CONCRETE CURB SHALL BE OF METAL ONLY, EXCEPT THAT WOOD FORMS MAY BE USED ON SHORT RADIUS CURVES.

ATTAINMENT OF PROPER CROWN OR SUPERELEVATION SHALL BE FULLY ACCOMPLISHED WITH THE LEVELING BINDER.

IN ADDITION TO THE REQUIREMENTS OF ARTICLE 107.16 THE CONTRACTOR SHALL PROTECT THE SURFACE OF ALL BRIDGE DECKS AND BRIDGE APPROACH PAVEMENTS IN A MANNER SATISFACTORY TO THE ENGINEER BEFORE ANY EQUIPMENT IS ALLOWED TO CROSS THE STRUCTURE. PROTECTION SHALL BE PROVIDED FOR ALL EQUIPMENT AS DEFINED IN ARTICLE 101.16 REGARDLESS IF TRACK MOUNTED OR WHEELED.

THE THICKNESS OF BITUMINOUS MIXTURE SHOWN ON THE PLANS IS THE NOMINAL THICKNESS. DEVIATIONS FROM THE NOMINAL THICKNESS WILL BE PERMITTED WHEN SUCH DEVIATIONS OCCUR DUE TO IRREGULARITIES IN THE EXISTING SURFACE OR BASE ON WHICH THE BITUMINOUS MIXTURE IS PLACED.

EXISTING SHOULDER MATERIAL WHICH IS EXCAVATED AND EXCESS MATERIAL FROM PIPE DRAIN TRENCHES MAY BE WASTED IN AREAS OF SOIL EROSION ON THE WORK SITE, AS DIRECTED BY THE ENGINEER.

AT EACH STRUCTURE, PAVEMENT MARKINGS SHALL BE PAINTED FROM END TO END OF THE WORK AREA, INCLUDING THE LENGTH OF THE STRUCTURE.

THE QUANTITY OF PAVED SHOULDER REMOVAL INCLUDES THE AREA OF THE SHOULDER AT THE INLET BOX.

COMMITMENTS: NONE AS OF AUGUST 17, 2012.

HOT-MIX ASPHALT MIX DESIGN

Location(s):	Hot-Mix Asphalt Surface Course - SN 030-0020
Mixture Use(s):	Hot-Mix Asphalt Surface Course, Mix C, N90 And Leveling Binder
AC/PG:	PG64-22
RAP % (Max):	10
Design Air Voids:	4.0 %, 90 Gyraton Design
Mixture Composition:	
(Gradation Mixture)	Surface Course: IL-9.5 mm or IL12.5 mm
Friction Aggregate:	C Surface
(Gradation Mixture)	Leveling Binder: IL 12.5 mm

Location(s):	Hot-Mix Asphalt Shoulders - SN 030-0020 SN 030-0021
Mixture Use(s):	Hot-Mix Asphalt Shoulders, N30
AC/PG:	PG58-22
RAP % (Max):	50
Design Air Voids:	2.0 %, 30 Gyraton Design
Mixture Composition:	HMA Shoulder
(Gradation Mixture)	
Friction Aggregate:	None

Prepared By: *Joe Zdaniewicz*
DISTRICT STUDIES & PLANS ENGINEER

Examined By: *F. L. E.*
DISTRICT LAND ACQUISITION ENGINEER

Examined By: *Car. Nels*
DISTRICT PROGRAM DEVELOPMENT ENGINEER

Examined By: *Kel. M.*
DISTRICT OPERATIONS ENGINEER

Examined By: *K. P.*
DISTRICT PROJECT IMPLEMENTATION ENGINEER

Examined By: *Douglas J. Hulburt*
DISTRICT CONSTRUCTION ENGINEER

Examined By: *Bruce W. P.*
DISTRICT MATERIALS ENGINEER

Approved By: *Omer Osman*
DEPUTY DIRECTOR OF HIGHWAYS, REGION 5 ENGINEER

DATE: *Aug 31* 20 *12*

FILE NAME: c:\pwworkspace\gautneyr\082527A\030-0020-0021-std.dgn

USER NAME * gautneyr	DESIGNED -	REVISED -
PLOT SCALE * 400 1" = 100'	DRAWN -	REVISED -
PLOT DATE * 8/30/2012	CHECKED -	REVISED -
	DATE -	REVISED -

**STATE OF ILLINOIS
DEPARTMENT OF TRANSPORTATION**

INDEX OF SHEETS, GENERAL NOTES, STANDARDS	
SCALE: _____	SHEET NO. ____ OF ____ SHEETS
STA. _____	TO STA. _____

F.A.P. RTE. 782	SECTION D9 CM BRIDGE REPAIR 2012-3	COUNTY GALLATIN	TOTAL SHEETS 14	SHEET NO. 2
CONTRACT NO. 78253				
[ILLINOIS] FED. AID PROJECT				

501 8 9 932

SUMMARY OF QUANTITIES

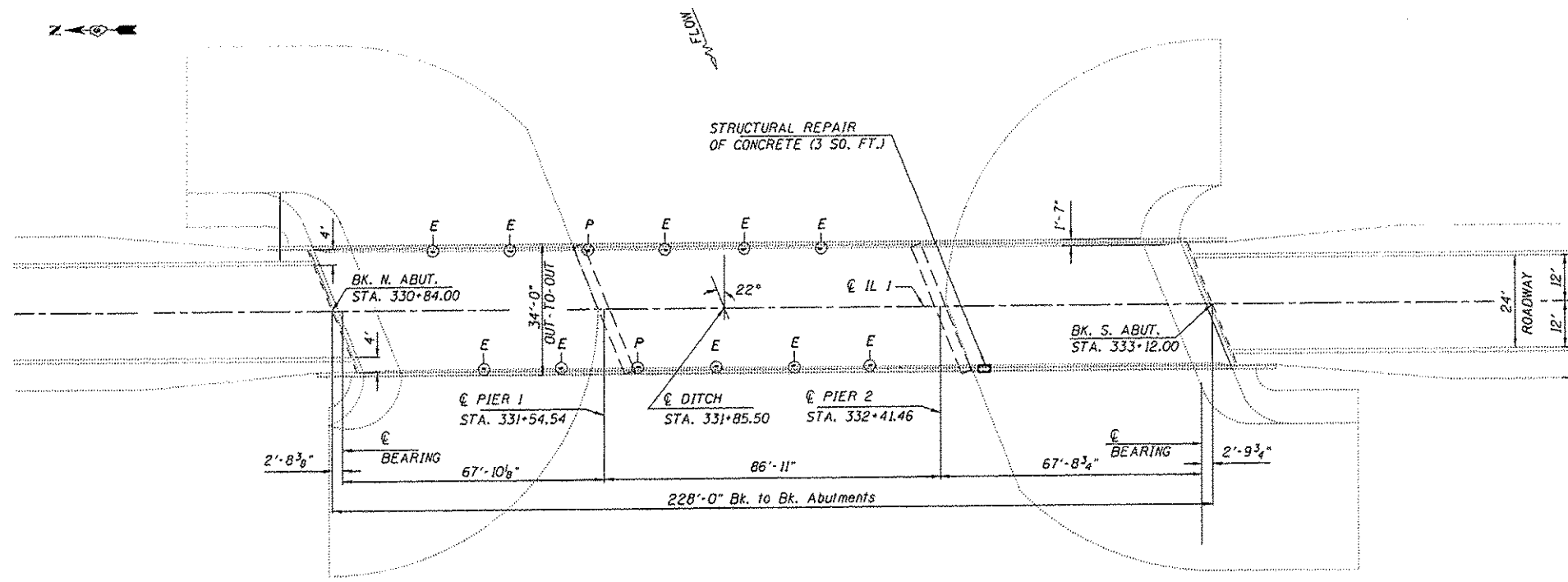
		RURAL GALLATIN COUNTY 100% STATE CONSTRUCTION TYPE CODE: 0014			
CODE NO.	ITEM DESCRIPTION	UNIT	TOTAL QUANTITY	F. A. P. 782	
				030-0020	030-0021
20200100	EARTH EXCAVATION	CU YD	42	22	20
28100107	STONE RIPRAP, CLASS A4	SQ YD	378	172	206
28100109	STONE RIPRAP, CLASS A5	SQ YD	94	47	47
28100807	STONE DUMPED RIPRAP, CLASS A4	TON	41	13	28
28200200	FILTER FABRIC	SQ YD	657	294	363
40300100	BITUMINOUS MATERIALS (PRIME COAT)	GALLON	20	20	0
40600645	LEVELING BINDER (MACHINE METHOD), N90	TON	4	4	0
40600985	PORTLAND CEMENT CONCRETE SURFACE REMOVAL - BUTT JOINT	SQ YD	107	107	0
40600990	TEMPORARY RAMP	SQ YD	36	36	0
40603320	HOT-MIX ASPHALT SURFACE COURSE, MIX "C", N90	TON	20	20	0
44004250	PAVED SHOULDER REMOVAL	SQ YD	127	64	63
48102100	AGGREGATE WEDGE SHOULDER, TYPE B	TON	4	4	0
48203037	HOT-MIX ASPHALT SHOULDERS, 10"	SQ YD	202	102	100
54213447	END SECTIONS 12"	EACH	8	4	4
60100945	PIPE DRAINS 12"	FOOT	696	332	364
60600605	CONCRETE CURB, TYPE B	FOOT	300	158	142
60900515	CONCRETE THRUST BLOCKS	EACH	24	12	12
61000335	TYPE G INLET BOX, STANDARD 610001	EACH	8	4	4

18

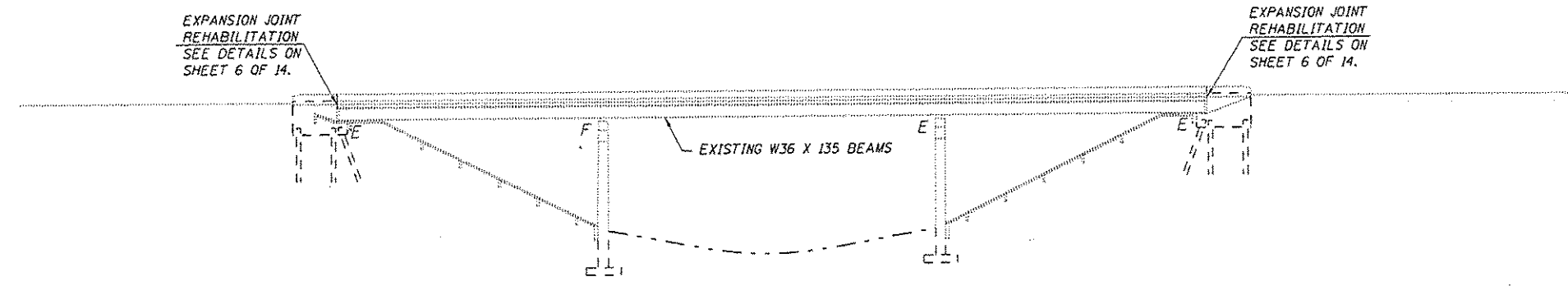
SUMMARY OF QUANTITIES (CONTINUED)

CODE NO.	ITEM DESCRIPTION	UNIT	TOTAL QUANTITY	F. A. P. 782	
				030-0020	030-0021
63300575	REMOVE AND REERECT RAIL ELEMENT OF EXISTING GUARDRAIL	FOOT	325	175	150
67000400	ENGINEER'S FIELD OFFICE, TYPE A	CAL MO	3	1.5	1.5
67100100	MOBILIZATION	L SUM	1	0.5	0.5
70100450	TRAFFIC CONTROL AND PROTECTION, STANDARD 701201	L SUM	1	0.5	0.5
70106800	CHANGEABLE MESSAGE SIGN	CAL MO	3	1.5	1.5
* 78001110	PAINT PAVEMENT MARKING - LINE 4"	FOOT	2079	806	1273
Z0021922	SILICONE JOINT SEALER	FOOT	141	75	66
Z0041895	POLYMER CONCRETE	CU FT	14	4	10
X0322469	PLUG EXISTING FLOOR DRAINS	EACH	88	2	86
X5030530	FLOOR DRAIN EXTENSION	EACH	76	10	66
Z0012754	STRUCTURAL REPAIR OF CONCRETE (DEPTH EQUAL TO OR LESS THAN 5 INCHES)	SQ FT	7	3	4
Z0065700	SLOPE WALL REPAIR	SQ YD	20	8	12
Z0065730	SLOPE WALL SLURRY PUMPING	CU YD	81	11	70

*SPECIALTY ITEM



PLAN



ELEVATION

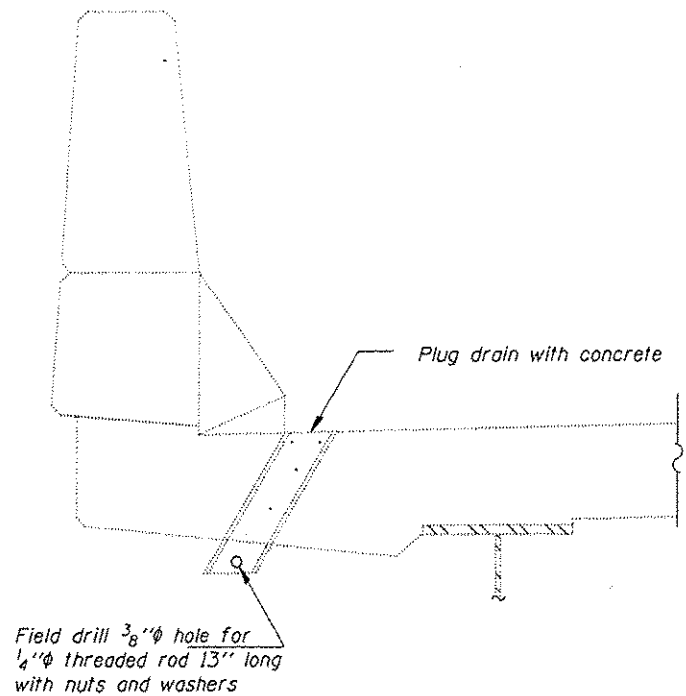
LEGEND

- E FLOOR DRAIN EXTENSION
 - P PLUG EXISTING FLOOR DRAINS
- THE EXISTING 12 FLOOR DRAINS ARE 4" X 12" ALUMINUM. SEE FLOOR DRAIN EXTENSION AND ELIMINATION DETAILS. SHEET 5 OF 14.



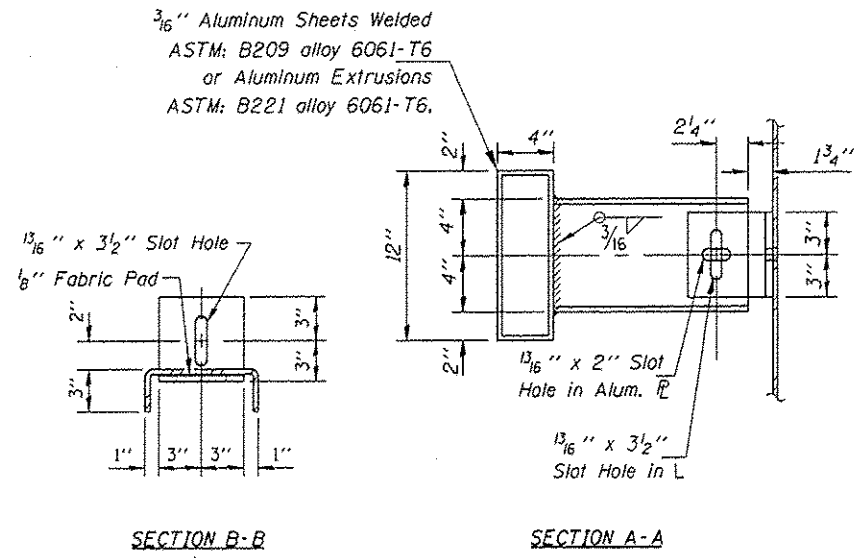
David Carl Puzey 9/29/12
Expires 11/30/14

FILE NAME : c:\p\work\pwr\d01\gautneyrk\d0253215\03	USER NAME : gautneyrk	DESIGNED : RKE	REVISED : -	STATE OF ILLINOIS DEPARTMENT OF TRANSPORTATION	GENERAL PLAN AND ELEVATION S.N. 030-0020 OVER LAWLER DITCH	F.A.P. RTE. : 782	SECTION : D0 CM BRIDGE REPAIR 2012-3	COUNTY : GALLATIN	TOTAL SHEETS : 14	SHEET NO. : 4
	PLOT SCALE : 48:8 1/2" = 1"	CHECKED : VVV	DATE : -			SCALE : _____	SHEET NO. : _____ OF _____ SHEETS	STA. 331+85.50	ILLINOIS FED. AID PROJECT CONTRACT NO. 78253	



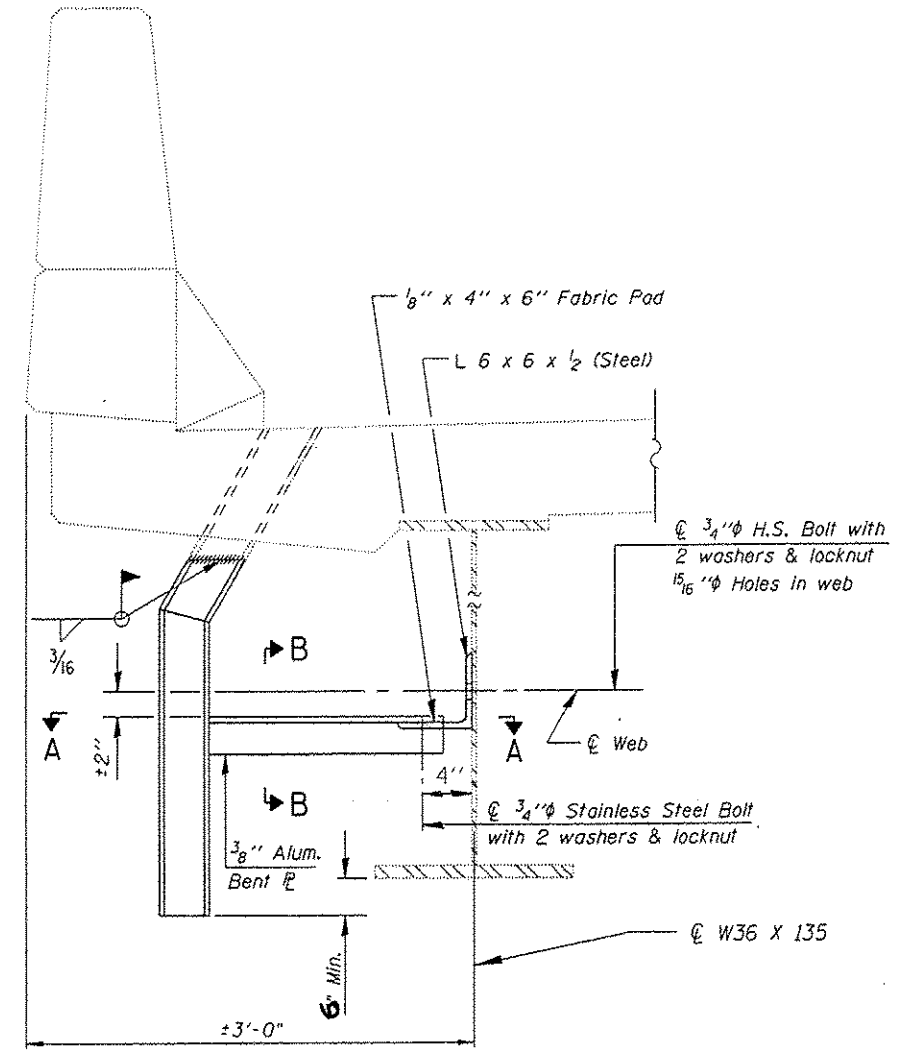
SECTION AT DRAIN
2 LOCATIONS

Locations shown on Sheet 4 OF 14.



FLOOR DRAIN EXTENSION DETAIL
10 LOCATIONS

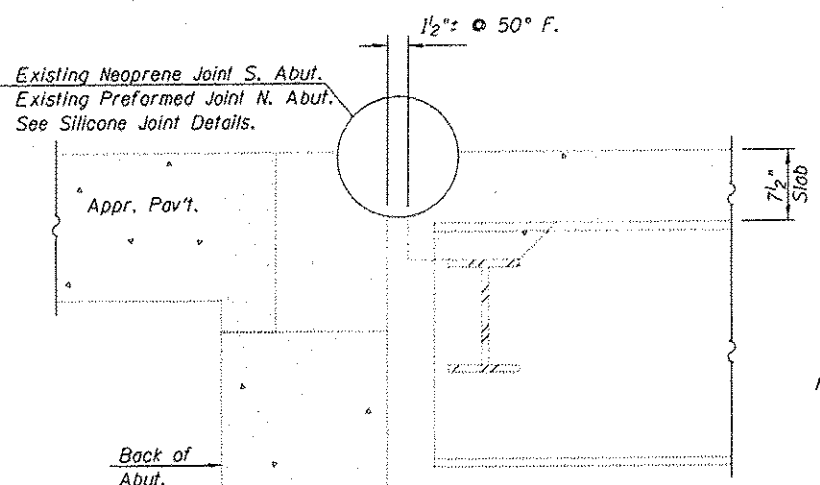
Locations shown on Sheet 4 OF 14.



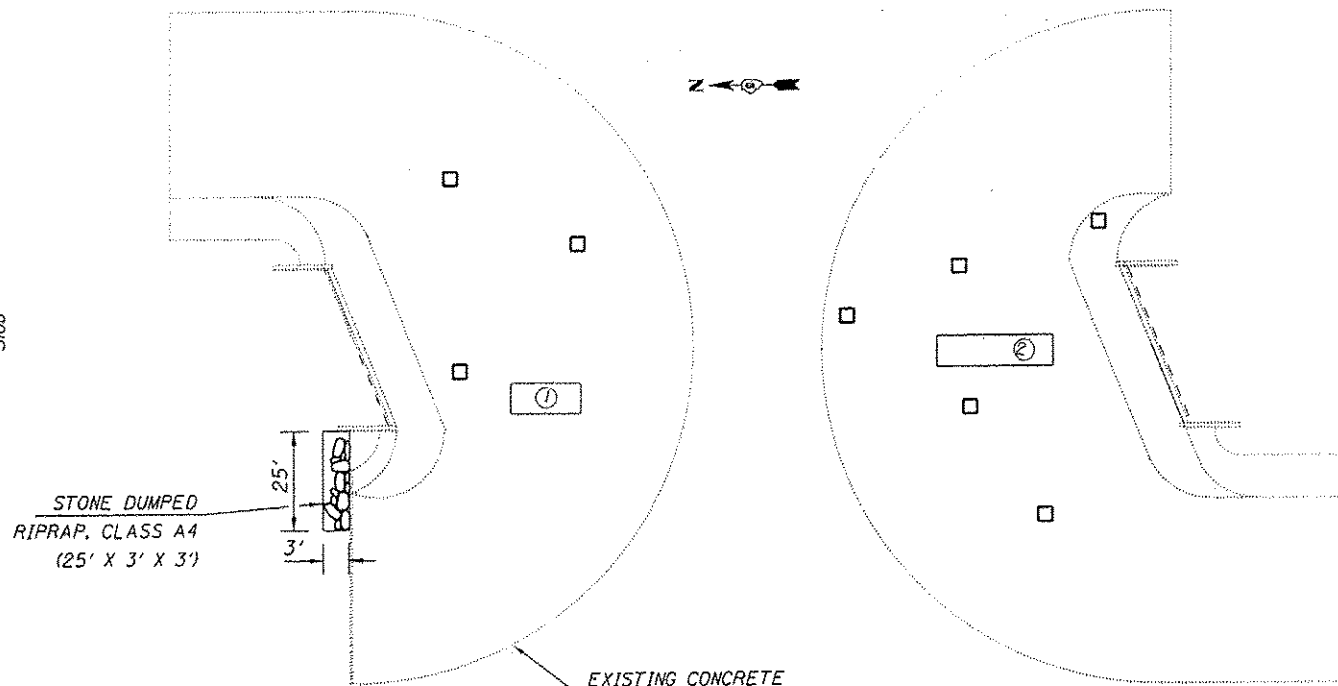
BILL OF MATERIAL

ITEM	UNIT	QUANTITY
FLOOR DRAIN EXTENSION	EA.	10
PLUG EXISTING DECK DRAINS	EA.	2

NOTES: The cost of removing the existing neoprene planks and membrane is included in the cost of Polymer Concrete.



SECTION THRU ABUTMENT

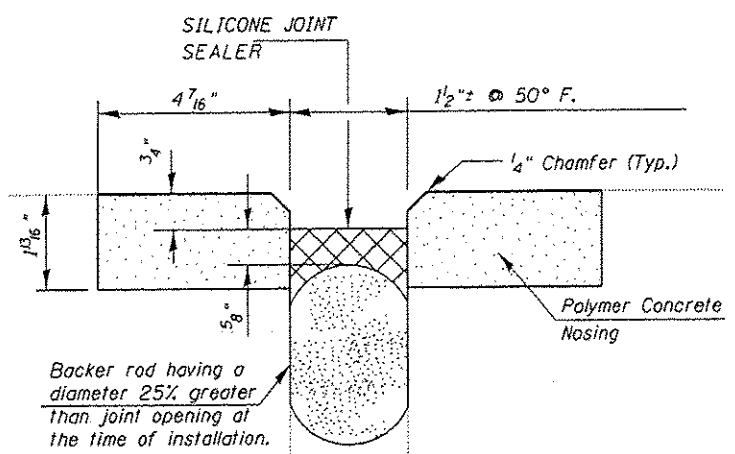


PLAN SLOPEWALL

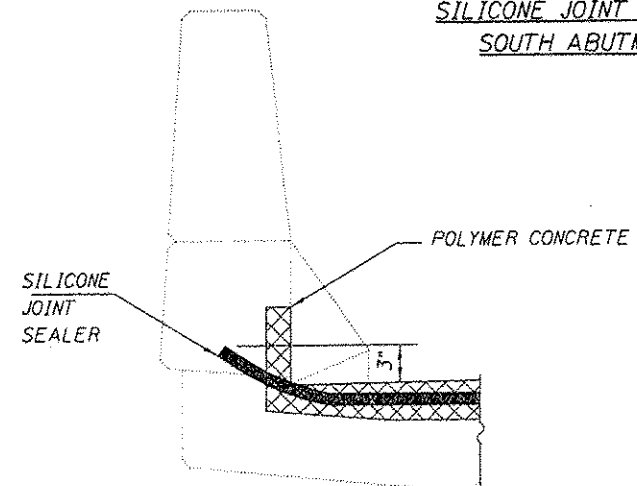
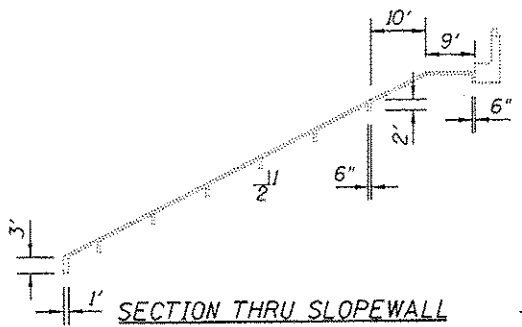
NOTES: Voids beneath the existing concrete slopewalls shall be filled with Controlled Low Strength Material (CLSM) in accordance with the special provision "Slopewall Slurry Pumping", and as directed by the Engineer. Existing dislodged concrete slopewall may be broken and used to partially fill voids before CLSM is placed. Existing slopewall openings were made for preliminary inspection. Additional sawed openings may be required. The cost of any new opening is included in the cost of Slopewall Slurry Pumping.

After the Controlled Low Strength Material has set, the slopewall shall be cast in accordance with Section 511 of the Standard Specifications. Slopewall repair areas shall be rectangular in shape. The cost of welded wire fabric, dowel bars, supports, saw cuts, and all labor, equipment, and material for slope wall repair are included in the cost of the Slopewall Repair measured in place in square yards.

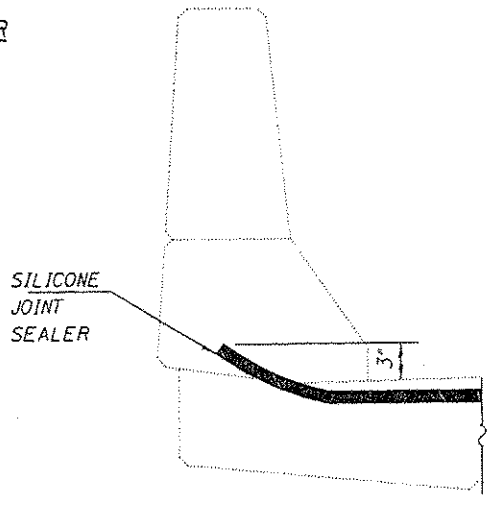
The locations and quantities of Slopewall Slurry Pumping and Slopewall Repair are based on field survey at the time of plan preparation. The exact locations and actual quantities will be determined in the field by the Engineer. The Contractor will be paid for the actual quantity at the contract unit price bid for the item.



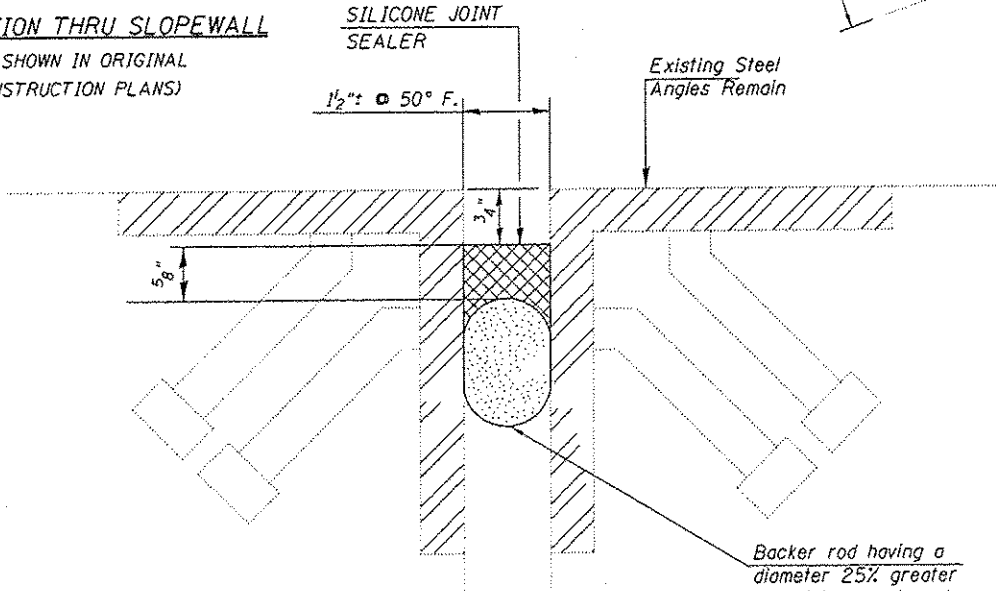
SILICONE JOINT SEALER SOUTH ABUTMENT



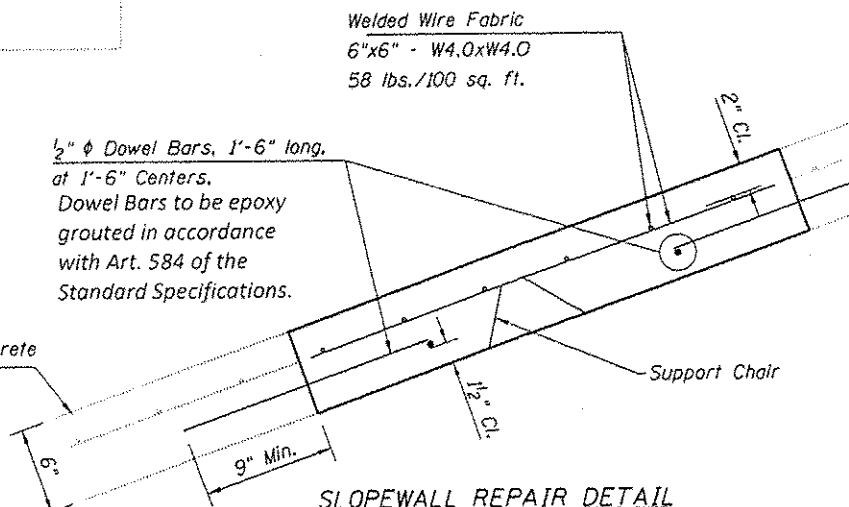
TYPICAL END OF SEAL TREATMENT REPLACING NEOPRENE JOINT



TYPICAL END OF SEAL TREATMENT REPLACING SEAL AT STEEL ANGLES



SILICONE JOINT SEALER NORTH ABUTMENT



SLOPEWALL SLURRY PUMPING

LOCATION	VOLUME (CU. YD.)
1	5
2	6
TOTAL	11

SILICONE JOINT BILL OF MATERIAL

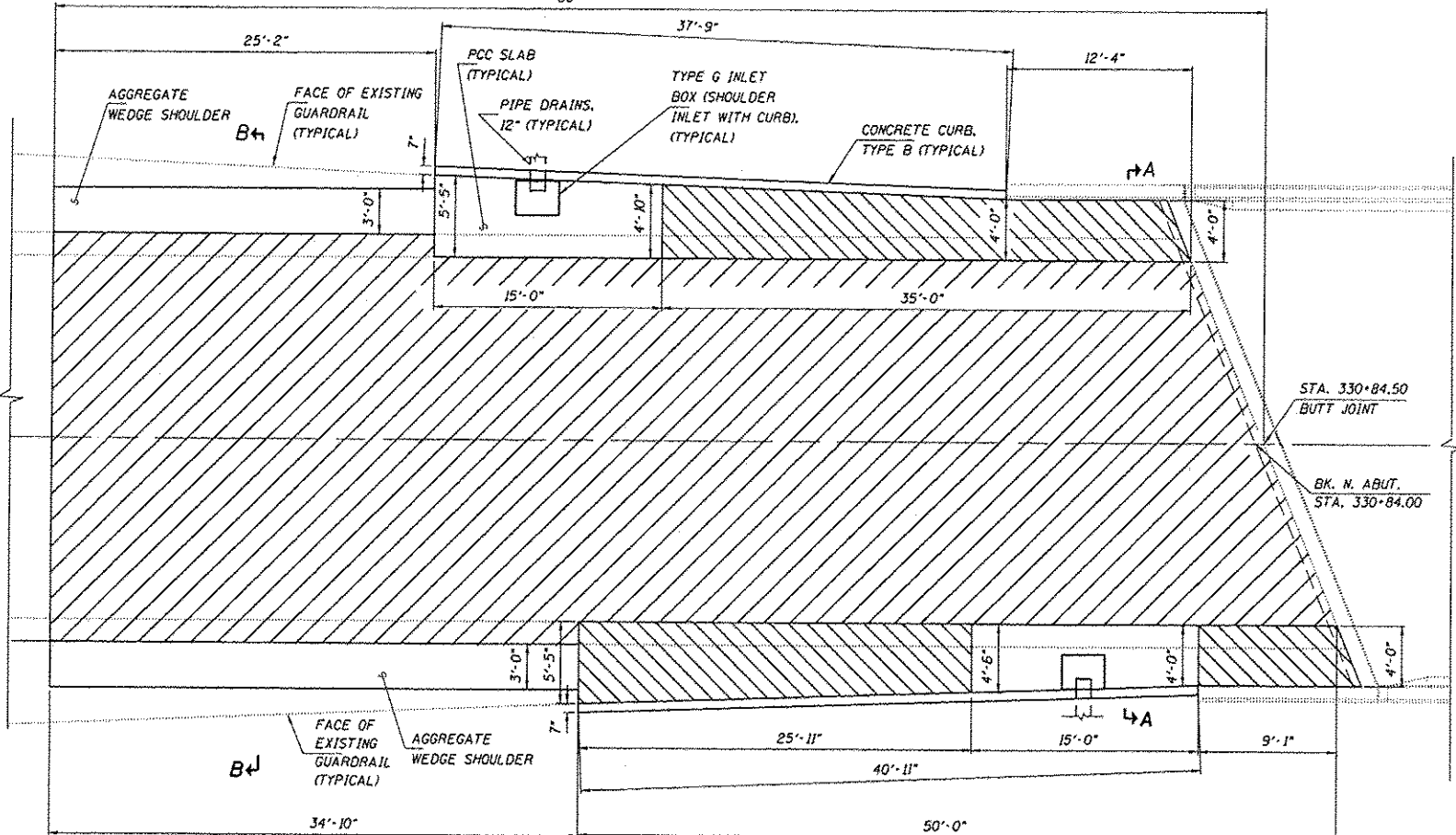
SILICONE JOINT SEALER	FOOT	75
POLYMER CONCRETE	CU. FT.	4

SLOPEWALL BILL OF MATERIAL

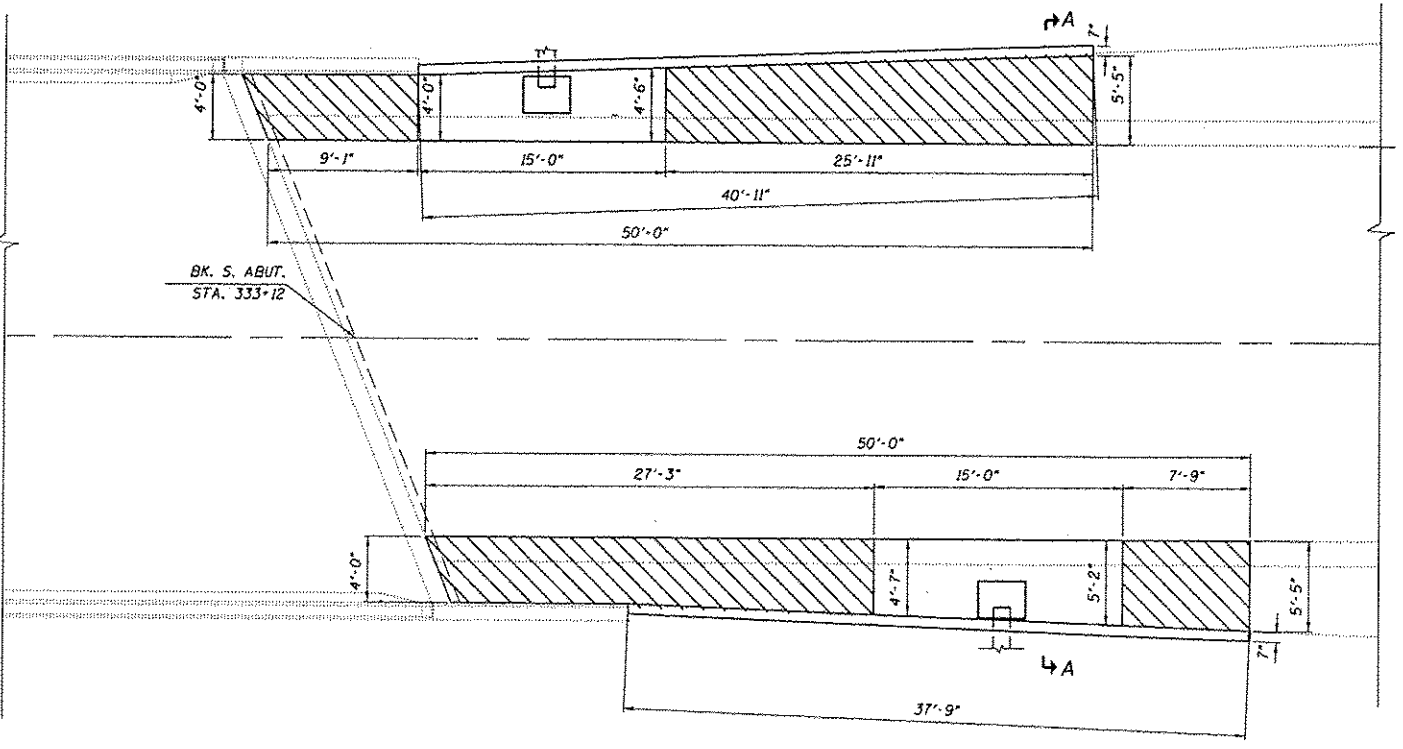
SLOPEWALL REPAIR	SQ. YD.	8
STONE DUMPED RIPRAP, CLASS A4	TON	13
SLOPEWALL SLURRY PUMPING	CU. YD.	11



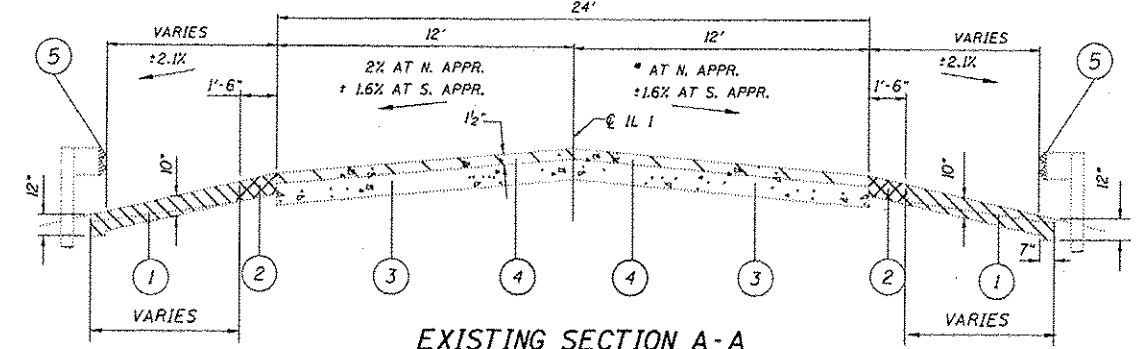
* 0.2% AT STA. 330+04.5 BUTT JT.
0.7% AT STA. 330+44
1.0% AT STA. 330+84.5 BUTT JT.



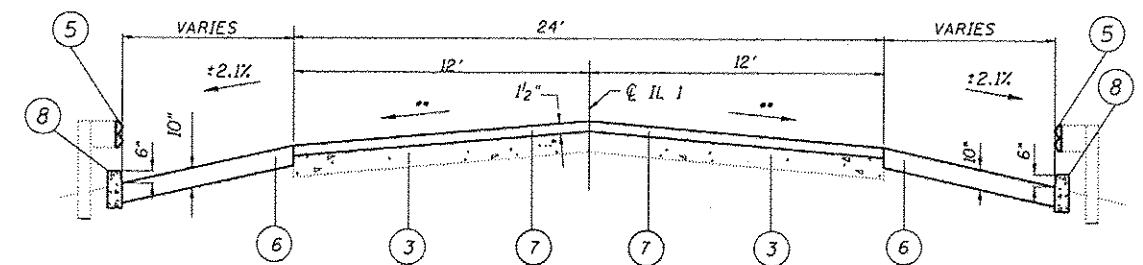
PLAN NORTH APPROACH



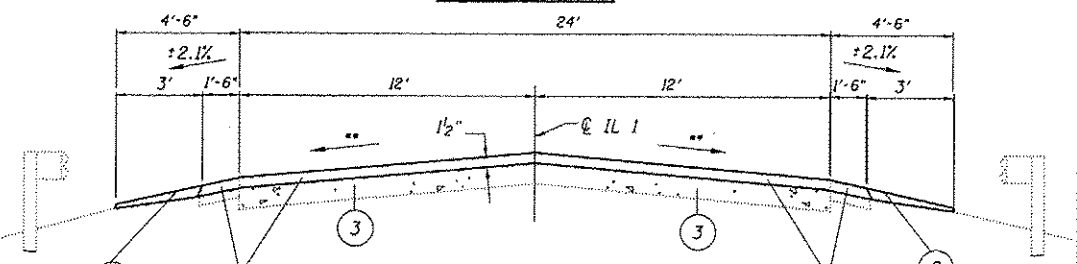
PLAN SOUTH APPROACH



EXISTING SECTION A-A APPROACHES (SHOWING REMOVAL)



PROPOSED SECTION A-A APPROACHES



PROPOSED SECTION B-B NORTH APPR.

PLAN LEGEND

- HMA SHOULDERS, 10"
- PRIME COAT LEVELING BINDER, MACHINE METHOD HOT-MIX ASPHALT SURFACE COURSE, MIX C, N90

PAINT PAVEMENT MARKING - 4"

LOCATION	COLOR	QUANTITY (FOOT)
CENTERLINE	YELLOW	90
EDGE LINES	WHITE	716

SECTION LEGEND

- ① EARTH EXCAVATION
- ② PAVED SHOULDER REMOVAL (8")
- ③ EXISTING 9" PCC PAVEMENT
- ④ PORTLAND CEMENT CONCRETE SURFACE REMOVAL - BUTT JOINT, ON N. APPR. ONLY
- ⑤ REMOVE AND REERECT RAIL ELEMENT OF EXISTING GUARDRAIL, TYPICAL
- ⑥ HMA SHOULDERS, 10" OR SHOULDER INLET WITH CURB
- ⑦ HMA SURFACE COURSE (1 1/2") & VARIABLE DEPTH LEVELING BINDER ON NORTH APPROACH ONLY
- ⑧ CONCRETE CURB, TYPE B (6")
- ⑨ AGGREGATE WEDGE SHOULDER

NOTES:
SEE PROFILE AND BUTT JOINT DETAIL ON SHEET 8 OF 14.
SEE STANDARD 606001 FOR CURB DETAILS NOT SHOWN.
SEE SPECIAL PROVISION "INLET BOX, TYPE G".
THE COST OF EXCAVATION AND BACK FILLING FOR INSTALLATION OF PIPE DRAINS IS INCLUDED IN PIPE DRAIN 12".
IN ADDITION TO THE THRUST BLOCK SHOWN ON STANDARD 610001, TWO THRUST BLOCKS SHALL BE INSTALLED AT THE ONE-THIRD POINTS ALONG THE PIPE LENGTH.

FILE NAME : c:\p\work\l\widot\goumeyr\k\d0253215\03	USER NAME : goumeyr	DESIGNED -	REVISED -
8828.0021-sh.dgn		DRAWN -	REVISED -
PLOT SCALE = 1/32" = 1' / in.		CHECKED -	REVISED -
PLOT DATE = 9/27/2012		DATE -	REVISED -

STATE OF ILLINOIS
DEPARTMENT OF TRANSPORTATION

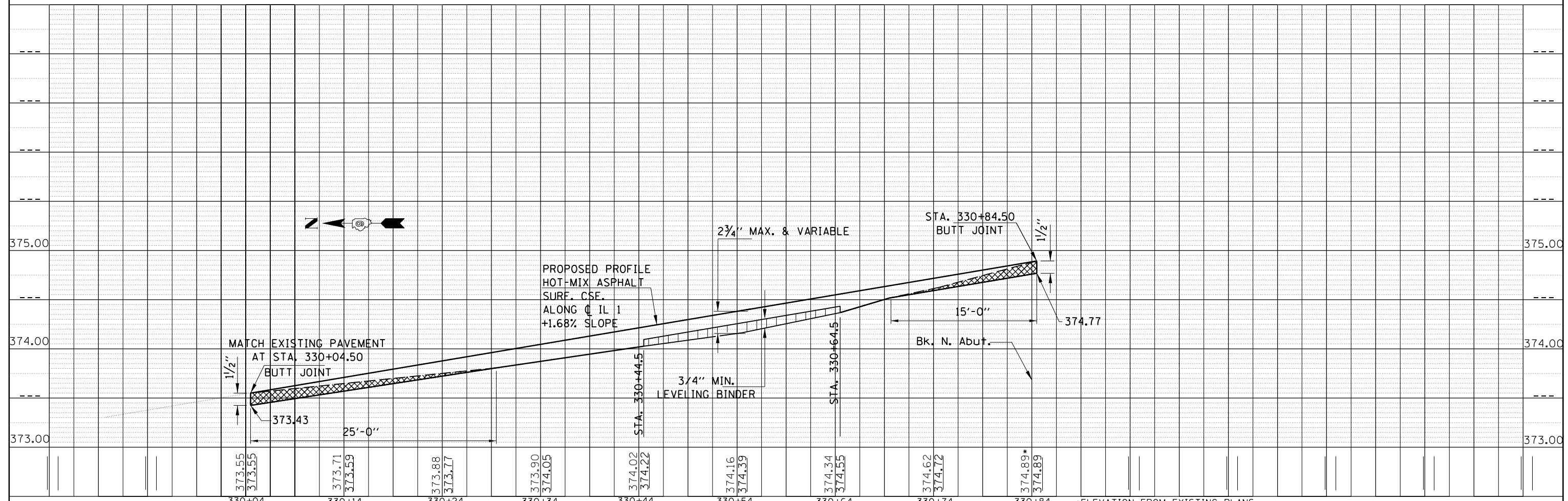
SHOULDERS, APPROACH OVERLAY
S.N. 030-0020 OVER LAWLER DITCH

SCALE: _____	SHEET NO. _____ OF _____ SHEETS	STA. _____ TO STA. _____	F.A.P. RTE. 782	SECTION DS CM BRIDGE REPAIR 2012-3	COUNTY GALLATIN	TOTAL SHEETS 14	SHEET NO. 7
--------------	---------------------------------	--------------------------	-----------------	------------------------------------	-----------------	-----------------	-------------

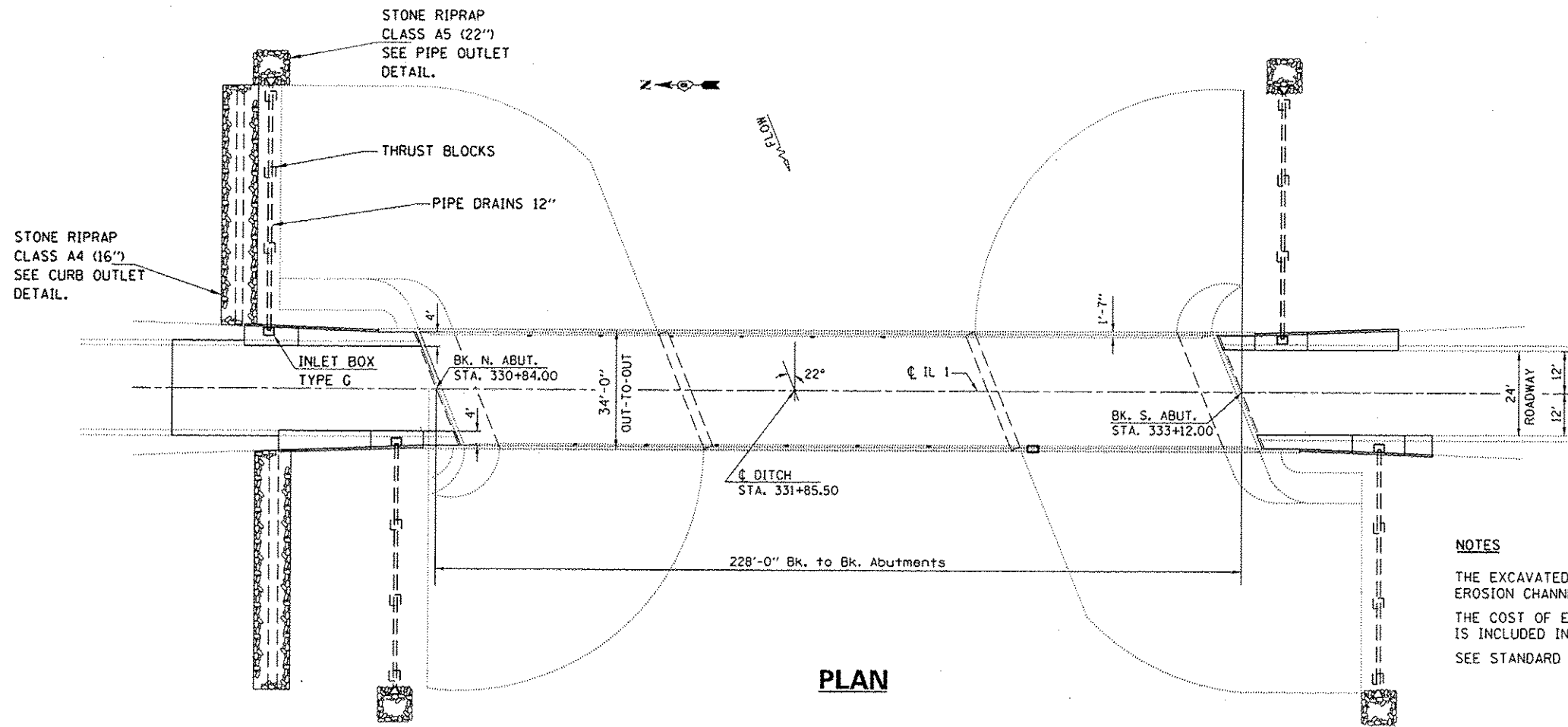
CONTRACT NO. 78253
ILLINOIS FED. AID PROJECT

 PCC SURFACE REMOVAL - BUTT JOINT

NOTE:
TEMPORARY RAMP SHALL BE 5' IN LENGTH AT A 40:1 MINIMUM TAPER.

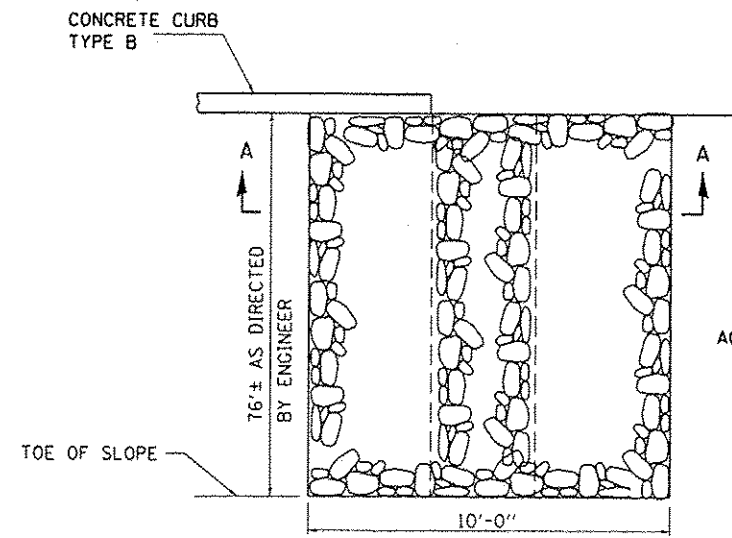


FILE NAME =	USER NAME = gautneyrk	DESIGNED -	REVISIED -	STATE OF ILLINOIS DEPARTMENT OF TRANSPORTATION	GENERAL PLAN AND ELEVATION S.N. 030-0020 OVER LAWLER DITCH	F.A.P. RTE.	SECTION	COUNTY	TOTAL SHEETS	SHEET NO.	
c:\pwork\pwork\gautneyrk\0253215\030-0020-0021-sht.dgn	PLOT SCALE = 10:0 " = 1' in.	DRAWN -	REVISIED -			782	D9 CM BRIDGE REPAIR 2012-3	GALLATIN	14	8	
Default	PLOT DATE = 8/31/2012	CHECKED -	REVISIED -			CONTRACT NO. 78253					
		DATE -	REVISIED -			ILLINOIS FED. AID PROJECT					

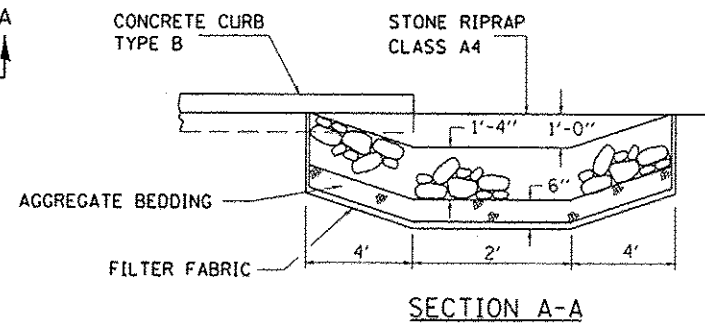


PLAN

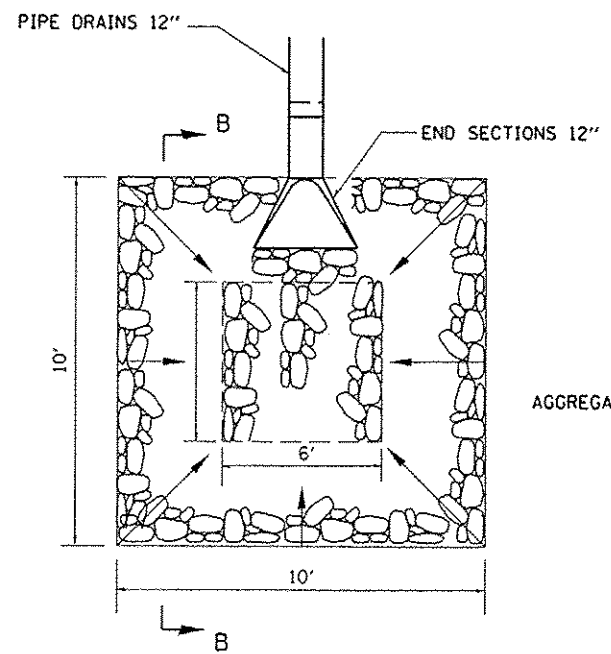
NOTES
 THE EXCAVATED MATERIAL MAY BE WASTED IN NEARBY EROSION CHANNELS AS DIRECTED BY THE ENGINEER.
 THE COST OF EARTH EXCAVATION AND AGGREGATE BEDDING IS INCLUDED IN THE COST OF STONE RIP RAP.
 SEE STANDARD 610001 FOR PIPE DRAIN DETAILS NOT SHOWN.



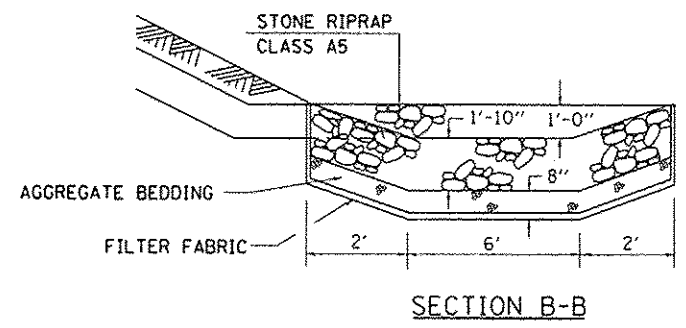
CURB OUTLET DETAIL



SECTION A-A



PIPE OUTLET DETAIL



SECTION B-B

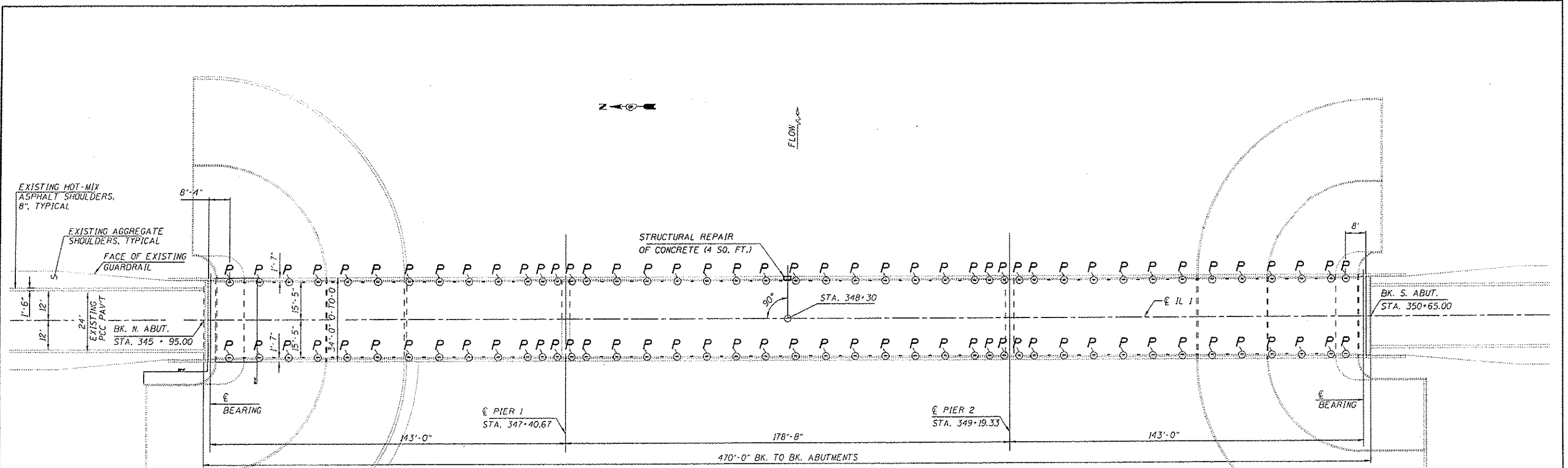
FILE NAME =	USER NAME = gautneyrk	DESIGNED -	REVISED -
c:\pwwork\pwwork\gautneyrk\0253215\034-0920_0921-sht.dgn		DRAWN -	REVISED -
		CHECKED -	REVISED -
		DATE -	REVISED -

**STATE OF ILLINOIS
 DEPARTMENT OF TRANSPORTATION**

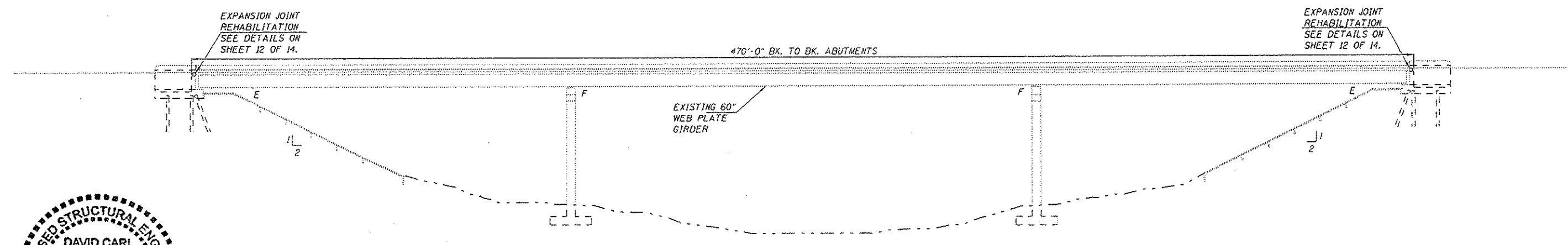
**DRAINAGE IMPROVEMENT
 S.N. 030-0020 OVER LAWLER DITCH**

SCALE: _____ SHEET NO. ____ OF ____ SHEETS STA. 331+85.50

F.A.P. RTE.	SECTION	COUNTY	TOTAL SHEETS	SHEET NO.
782	D8 CM BRIDGE REPAIR 2012-3	GALLATIN	14	9
CONTRACT NO. 78253			[ILLINOIS] FED. AID PROJECT	



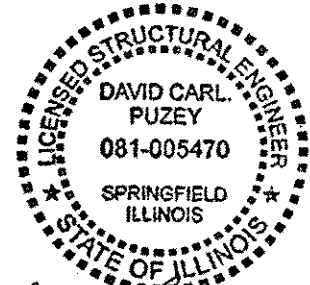
PLAN



ELEVATION

P = PLUG EXISTING FLOOR DRAINS

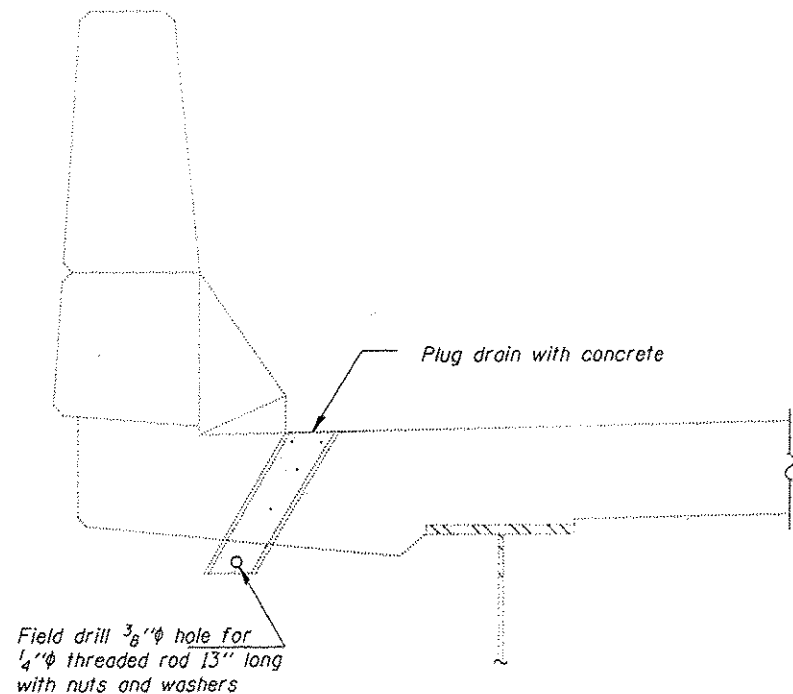
THE EXISTING 152 FLOOR DRAINS ARE 4" X 12" ALUMINUM. PLUG 86 DRAINS AS SHOWN ABOVE. EXTEND THE 66 REMAINING DRAINS. SEE FLOOR DRAIN EXTENSION AND ELIMINATION DETAILS, SHEET 11 OF 14.



David Carl Puzey 9/29/12
Expires 11/30/14

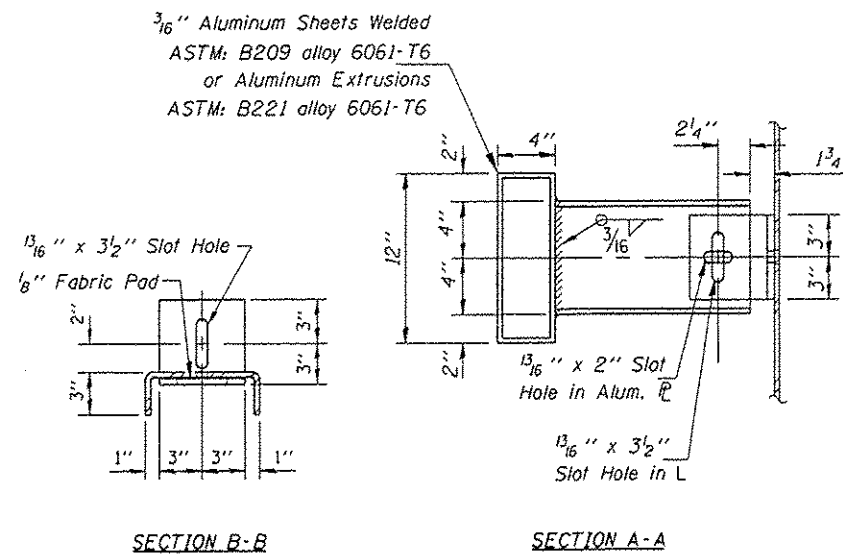
PROFILE F.A.P. RTE. 782

FILE NAME	USER NAME	DESIGNED	REVISED	STATE OF ILLINOIS DEPARTMENT OF TRANSPORTATION	GENERAL PLAN & ELEVATION S.N. 030-0021 OVER SALINE RIVER	F.A.P. RTE.	SECTION	COUNTY	TOTAL SHEETS	SHEET NO.	
c:\pwwork\pedit\goutney\k\0253215\030-0021-0021-pl.dgn	goutneyk	DRAWN	REVISED			782	D9 CM BRIDGE REPAIR 2012-3	GALLATIN	14	10	
PLOT SCALE	CHECKED	REVISOR	REVISOR			CONTRACT NO. 78253					
PLOT DATE	DATE	REVISOR	REVISOR			ILLINOIS FED. AID PROJECT					
					SCALE:	SHEET NO. OF SHEETS		STA. 348+30.00			



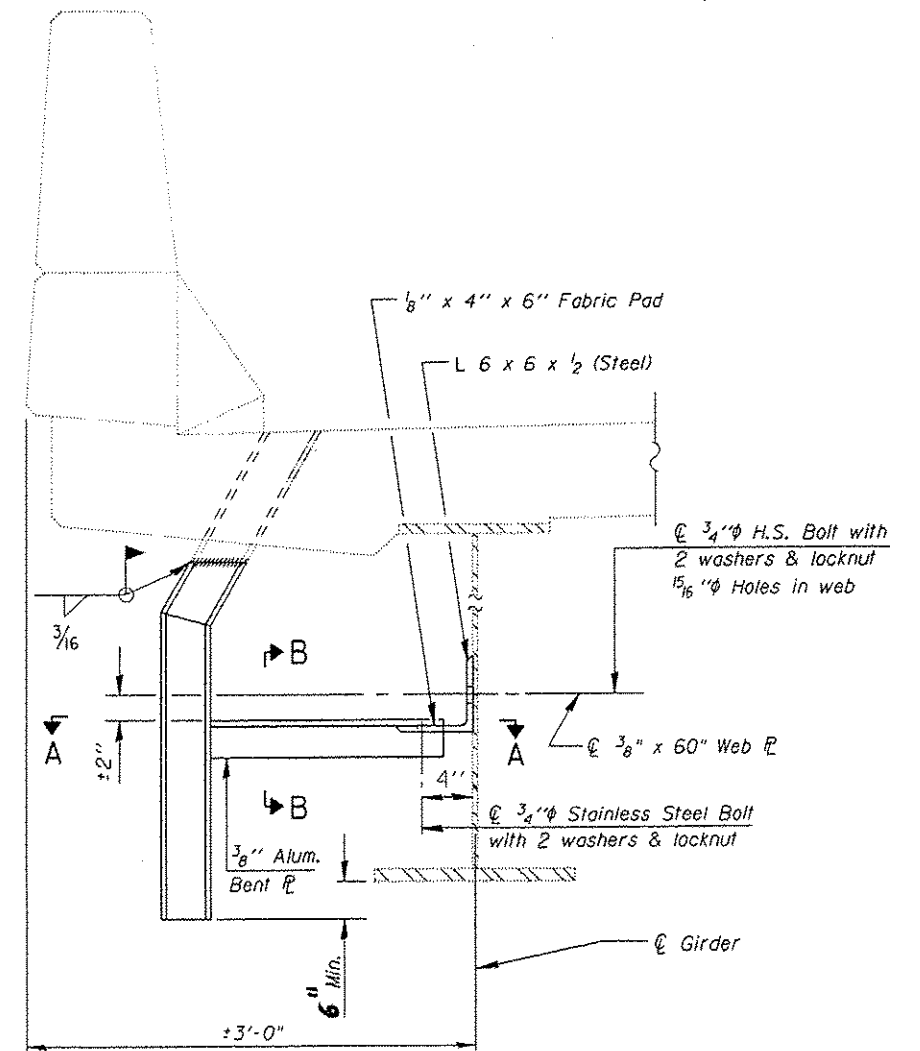
**SECTION AT DRAIN
86 LOCATIONS**

Locations shown on Sheet 10 OF 14.



**FLOOR DRAIN EXTENSION DETAIL
66 LOCATIONS**

Locations shown on Sheet 10 OF 14.

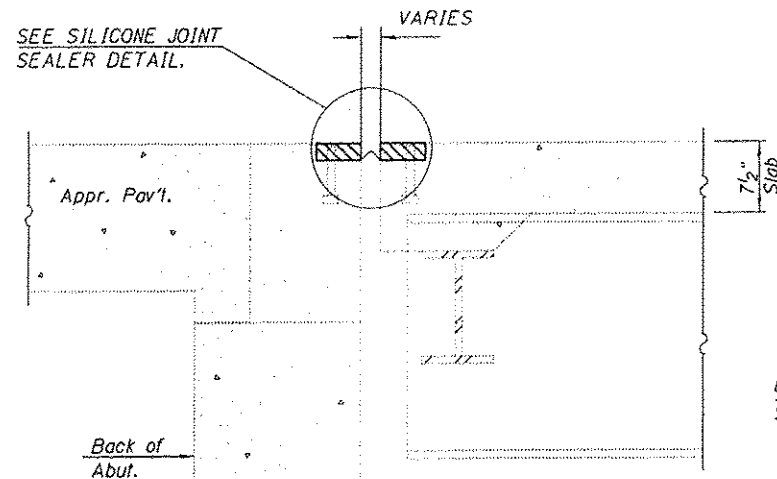


BILL OF MATERIAL

ITEM	UNIT	QUANTITY
FLOOR DRAIN EXTENSION	EACH	66
PLUG EXISTING DECK DRAINS	EACH	86

FILE NAME =	USER NAME = govtnygh	DESIGNED -	REVISED -	STATE OF ILLINOIS DEPARTMENT OF TRANSPORTATION	DRAIN ELIMINATION & EXTENSION S. N. 030-0021 OVER SALINE RIVER	F.A.P. RTE. =	SECTION =	COUNTY =	TOTAL SHEETS =	SHEET NO. =	
cr\pov_wpk\p\dot\govtnygh\d0253215\B3	-0020-0021-shl.dgn	DRAWN -	REVISED -			782	D9CM BRIDGE REPAIR 2012-3	GALLATIN	14	11	
	PLOT SCALE = 1/32 1/16 " = 1' in.	CHECKED -	REVISED -			ILLINOIS FED. AID PROJECT					
	PLOT DATE = 6/31/2012	DATE -	REVISED -			SCALE: _____	SHEET NO. _____ OF _____ SHEETS	78253			

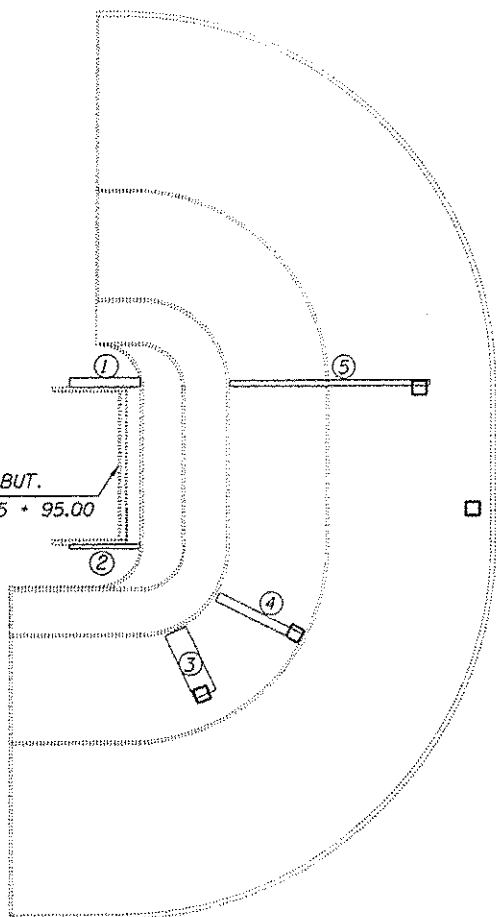
SEE SILICONE JOINT SEALER DETAIL.



SECTION THRU EXISTING NEOPRENE JOINT ABUTMENTS

NOTES: The cost of removing the existing neoprene planks and membrane is included in the cost of Polymer Concrete.

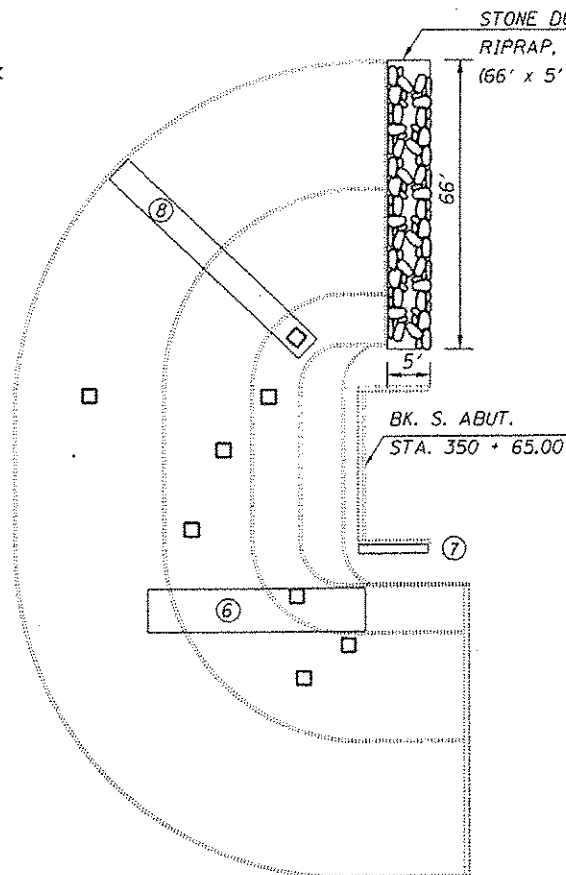
BK. N. ABUT.
STA. 345 + 95.00



PLAN SLOPEWALL

- SLOPEWALL REPAIR, Existing ±3' X ±3' Openings
- SLOPEWALL SLURRY PUMPING

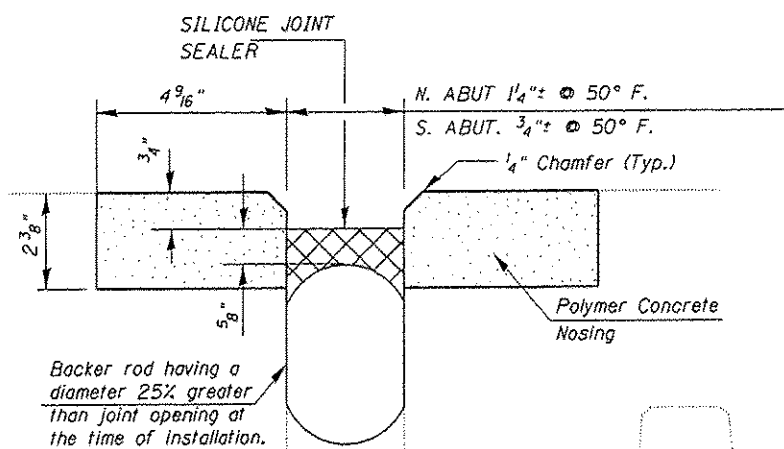
STONE DUMPED RIPRAP, CLASS A4 (66' x 5' x 1'-6")



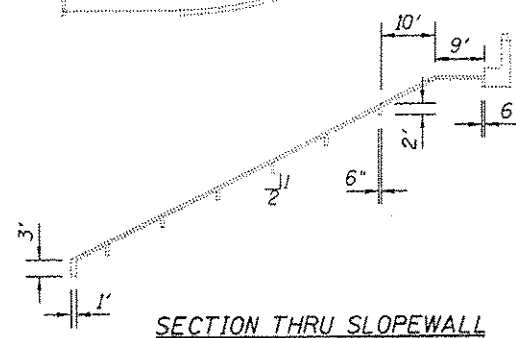
NOTES: Voids beneath the existing concrete slopewalls shall be filled with Controlled Low Strength Material (CLSM) in accordance with the special provision "Slopewall Slurry Pumping", and as directed by the Engineer. Existing dislodged concrete slopewall may be broken and used to partially fill voids before CLSM is placed. Existing slopewall openings were made for preliminary inspection. Additional sawed openings may be required. The cost of any new opening is included in the cost of Slopewall Slurry Pumping.

After the Controlled Low Strength Material has set, the slopewall shall be cast in accordance with Section 511 of the Standard Specifications. Slopewall repair areas shall be rectangular in shape. The cost of welded wire fabric, dowel bars, supports, saw cuts, and all labor, equipment, and material for slope wall repair are included in the cost of the Slopewall Repair measured in place in square yards.

The locations and quantities of Slopewall Slurry Pumping and Slopewall Repair are based on field survey at the time of plan preparation. The exact locations and actual quantities will be determined in the field by the Engineer. The Contractor will be paid for the actual quantity at the contract unit price bid for the item.



SILICONE JOINT SEALER ABUTMENTS

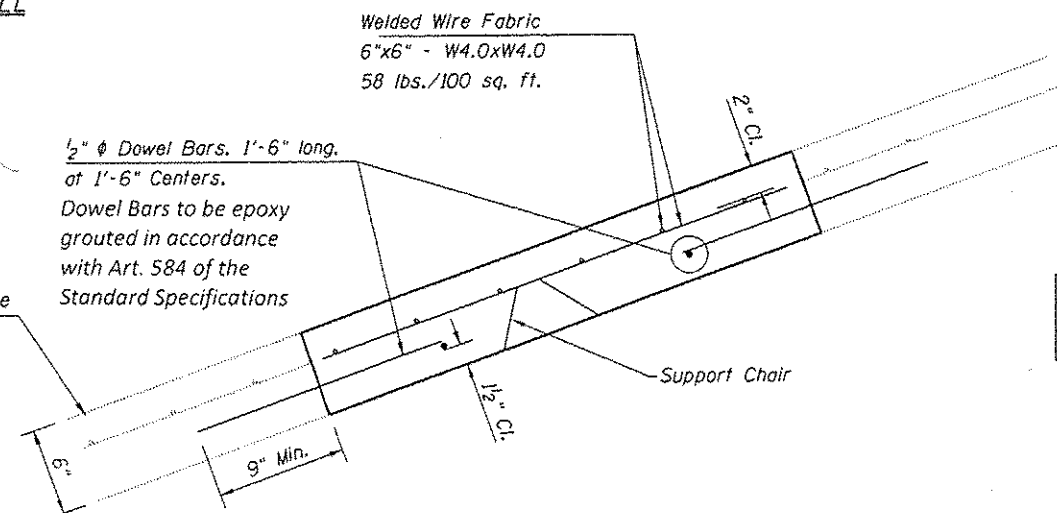


SECTION THRU SLOPEWALL (AS SHOWN IN ORIGINAL CONSTRUCTION PLANS)

Welded Wire Fabric
6"x6" - W4.0xW4.0
58 lbs./100 sq. ft.

1/2" φ Dowel Bars, 1'-6" long, at 1'-6" Centers.
Dowel Bars to be epoxy grouted in accordance with Art. 584 of the Standard Specifications

Existing Concrete Slopewall



SLOPEWALL REPAIR DETAIL

SLOPEWALL SLURRY PUMPING

LOCATION	VOLUME (CU. YD.)
1	3
2	3
3	5
4	2
5	2
6	38
7	2
8	15
TOTAL	70

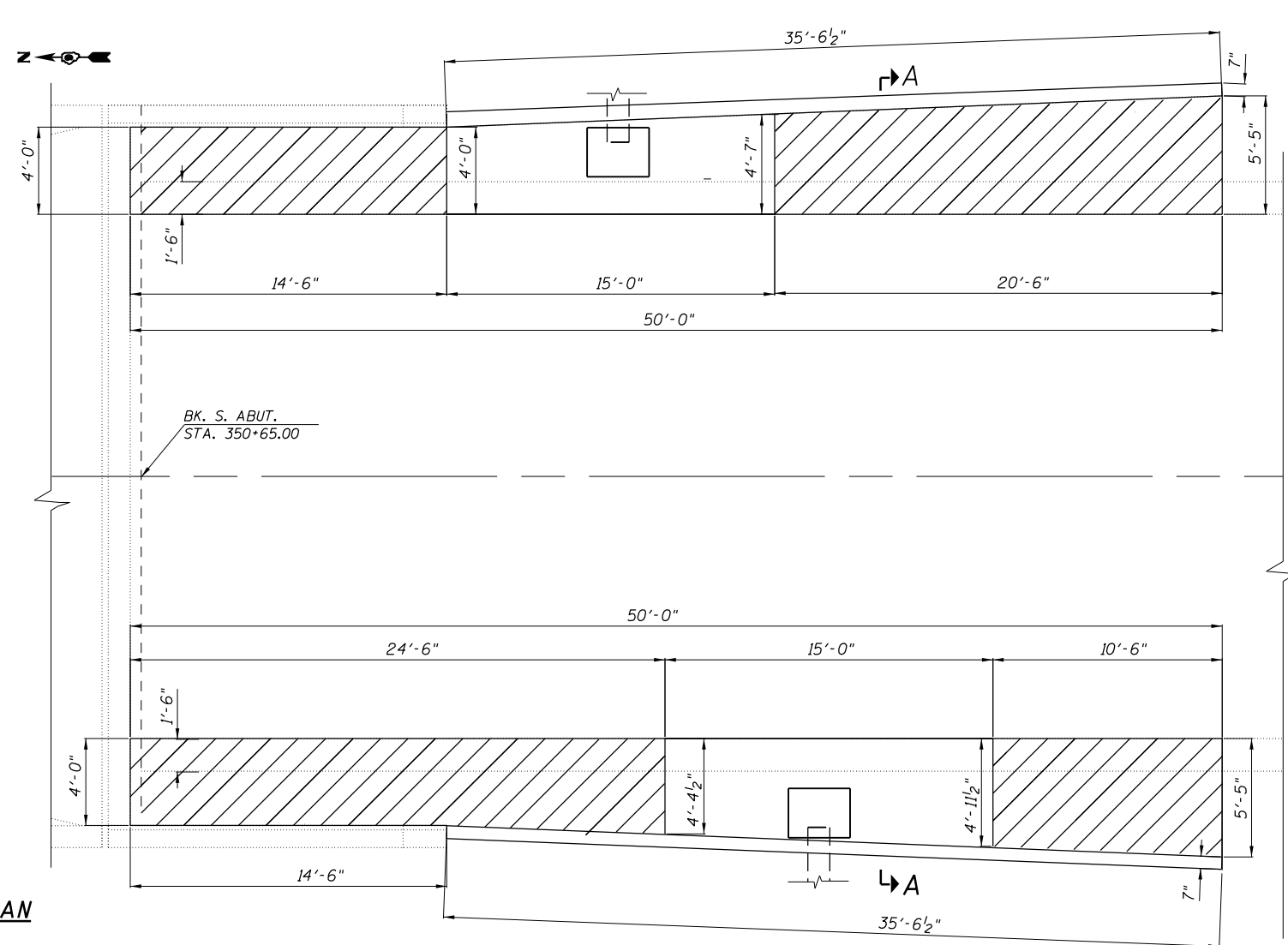
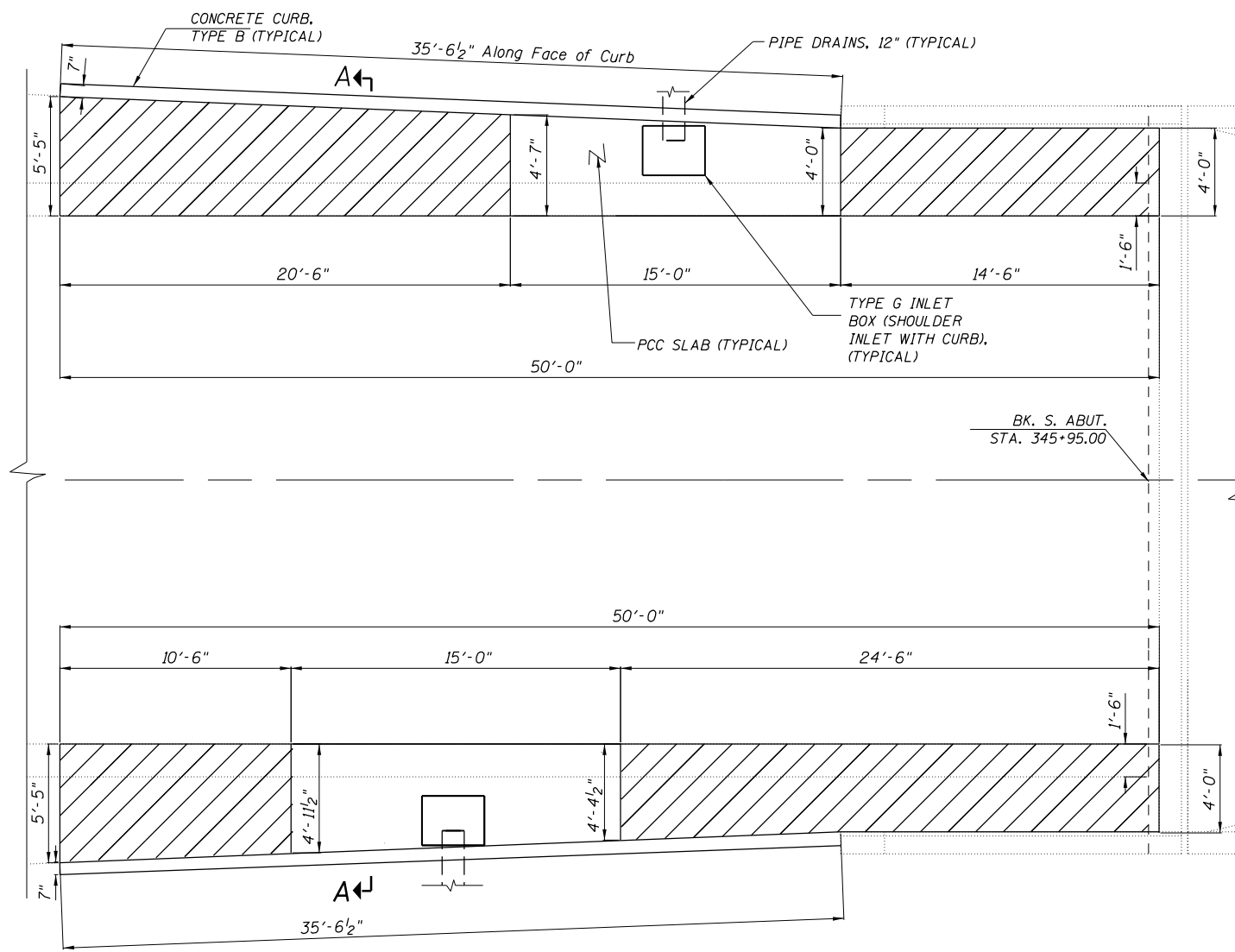
SILICONE JOINT BILL OF MATERIAL

SILICONE JOINT SEALER	FOOT	66
POLYMER CONCRETE	CU. FT.	10

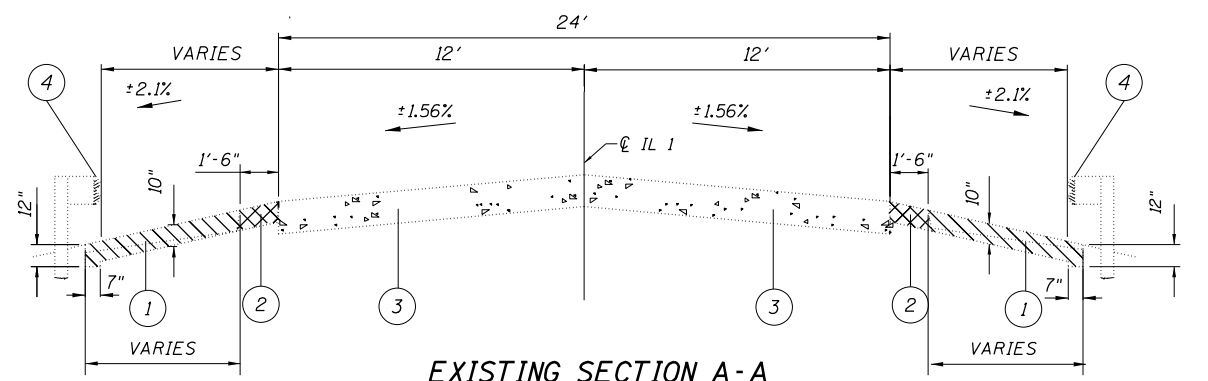
SLOPEWALL BILL OF MATERIAL

SLOPEWALL REPAIR	SQ. YD.	12
STONE DUMPED RIPRAP, CLASS A4	TON	28
SLOPEWALL SLURRY PUMPING	CU. YD.	70

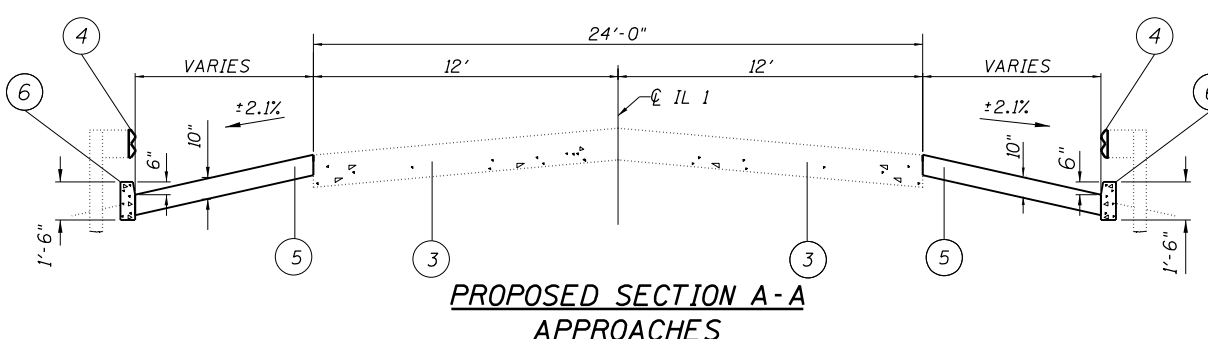
TYPICAL END OF SEAL TREATMENT WHEN REPLACING NEOPRENE JOINT



PLAN



EXISTING SECTION A-A APPROACHES (SHOWING REMOVAL)



PROPOSED SECTION A-A APPROACHES

PLAN LEGEND



PAINT PAVEMENT MARKING - 4"

LOCATION	COLOR	QUANTITY (FOOT)
CENTERLINE	YELLOW	141
EDGE LINES	WHITE	1132

SECTION LEGEND

- ① EARTH EXCAVATION
- ② PAVED SHOULDER REMOVAL (8")
- ③ EXISTING 9" PCC PAVEMENT
- ④ REMOVE AND REERECT RAIL ELEMENT OF EXISTING GUARDRAIL, TYPICAL
- ⑤ HMA SHOULDERS, 10" OR SHOULDER INLET WITH CURB
- ⑥ CONCRETE CURB, TYPE B (6")

NOTES:
 SEE STANDARD 606001 FOR CURB DETAILS NOT SHOWN.
 SEE SPECIAL PROVISION "INLET BOX, TYPE G".
 THE COST OF EXCAVATION AND BACK FILLING FOR INSTALLATION OF PIPE DRAINS IS INCLUDED IN PIPE DRAIN 12".
 IN ADDITION TO THE THRUST BLOCK SHOWN ON STANDARD 610001, TWO THRUST BLOCKS SHALL BE INSTALLED AT THE ONE-THIRD POINTS ALONG THE PIPE LENGTH.

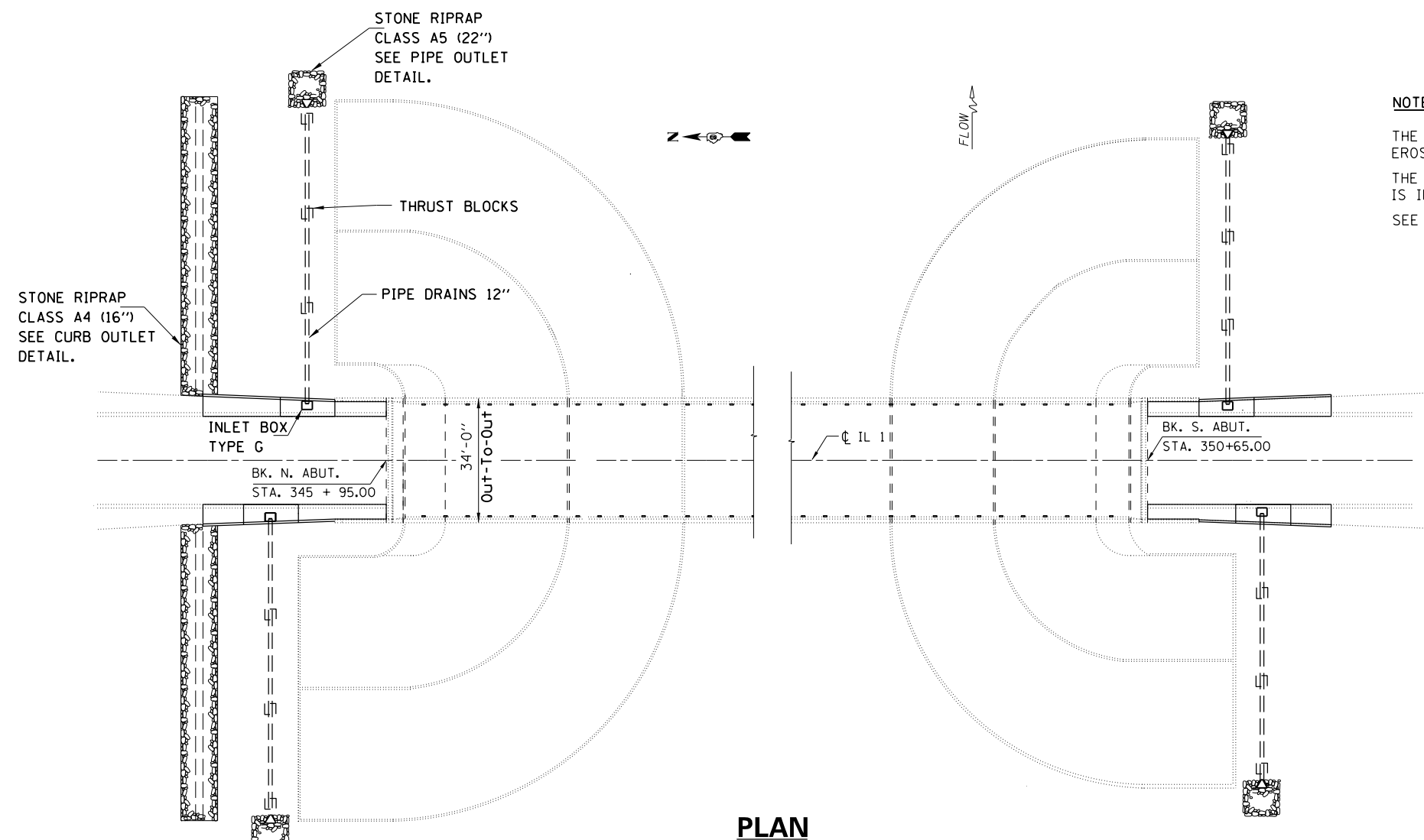
FILE NAME =	USER NAME = gautneyrk	DESIGNED -	REVISED -
es:\pwwork\pwwork\gautneyrk\d0253215\030-0020_0021-sht.dgn		DRAWN -	REVISED -
	PLOT SCALE = 7/16 3/8 " / 1"	CHECKED -	REVISED -
	PLOT DATE = 9/10/2012	DATE -	REVISED -

STATE OF ILLINOIS
 DEPARTMENT OF TRANSPORTATION

DRAINAGE IMPROVEMENT
 S.N. 030-0021 OVER SALINE RIVER

F.A.P. RTE.	SECTION	COUNTY	TOTAL SHEETS	SHEET NO.
782	D9 CM BRIDGE REPAIR 2012-3	GALLATIN	14	13
CONTRACT NO. 78253				

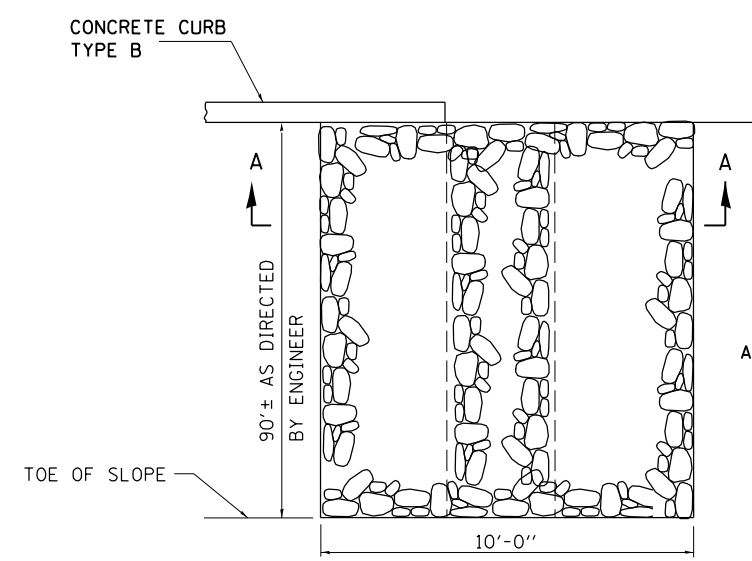
SCALE: _____ SHEET NO. ____ OF ____ SHEETS STA. _____ TO STA. _____ ILLINOIS FED. AID PROJECT



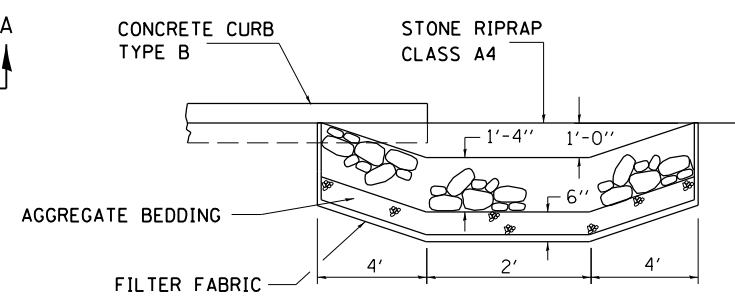
PLAN

NOTES

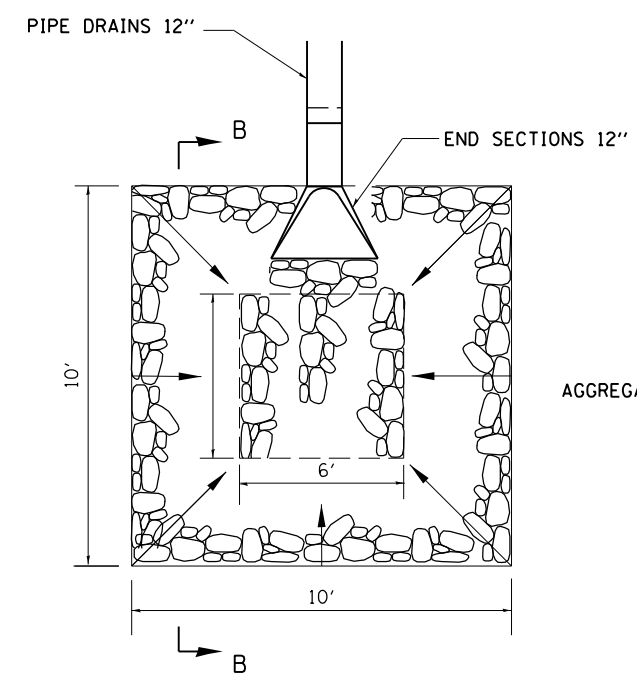
THE EXCAVATED MATERIAL MAY BE WASTED IN NEARBY EROSION CHANNELS AS DIRECTED BY THE ENGINEER.
 THE COST OF EARTH EXCAVATION AND AGGREGATE BEDDING IS INCLUDED IN THE COST OF STONE RIP RAP.
 SEE STANDARD 610001 FOR PIPE DRAIN DETAILS NOT SHOWN.



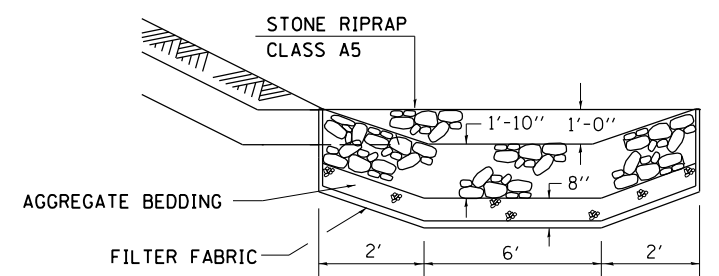
CURB OUTLET DETAIL



SECTION A-A



PIPE OUTLET DETAIL



SECTION B-B

FILE NAME =	USER NAME = gautneyrk	DESIGNED -	REVISED -
ca:\pw_work\pwidot\gautneyrk\d0253215\030-0020_0021-sht.dgn		DRAWN -	REVISED -
	PLOT SCALE = 40:0 "/> <td>CHECKED -</td> <td>REVISED -</td>	CHECKED -	REVISED -
	PLOT DATE = 9/10/2012	DATE -	REVISED -

**STATE OF ILLINOIS
 DEPARTMENT OF TRANSPORTATION**

**GENERAL PLAN & ELEVATION
 S.N. 030-0021 OVER SALINE RIVER**
 SCALE: _____ SHEET NO. ___ OF ___ SHEETS STA. 348+30.00

F.A.P. RTE.	SECTION	COUNTY	TOTAL SHEETS	SHEET NO.
782	D9 CM BRIDGE REPAIR 2012-3	GALLATIN	14	14
CONTRACT NO. 78253				
ILLINOIS FED. AID PROJECT				