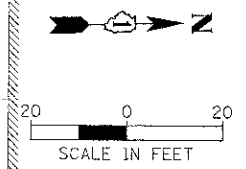
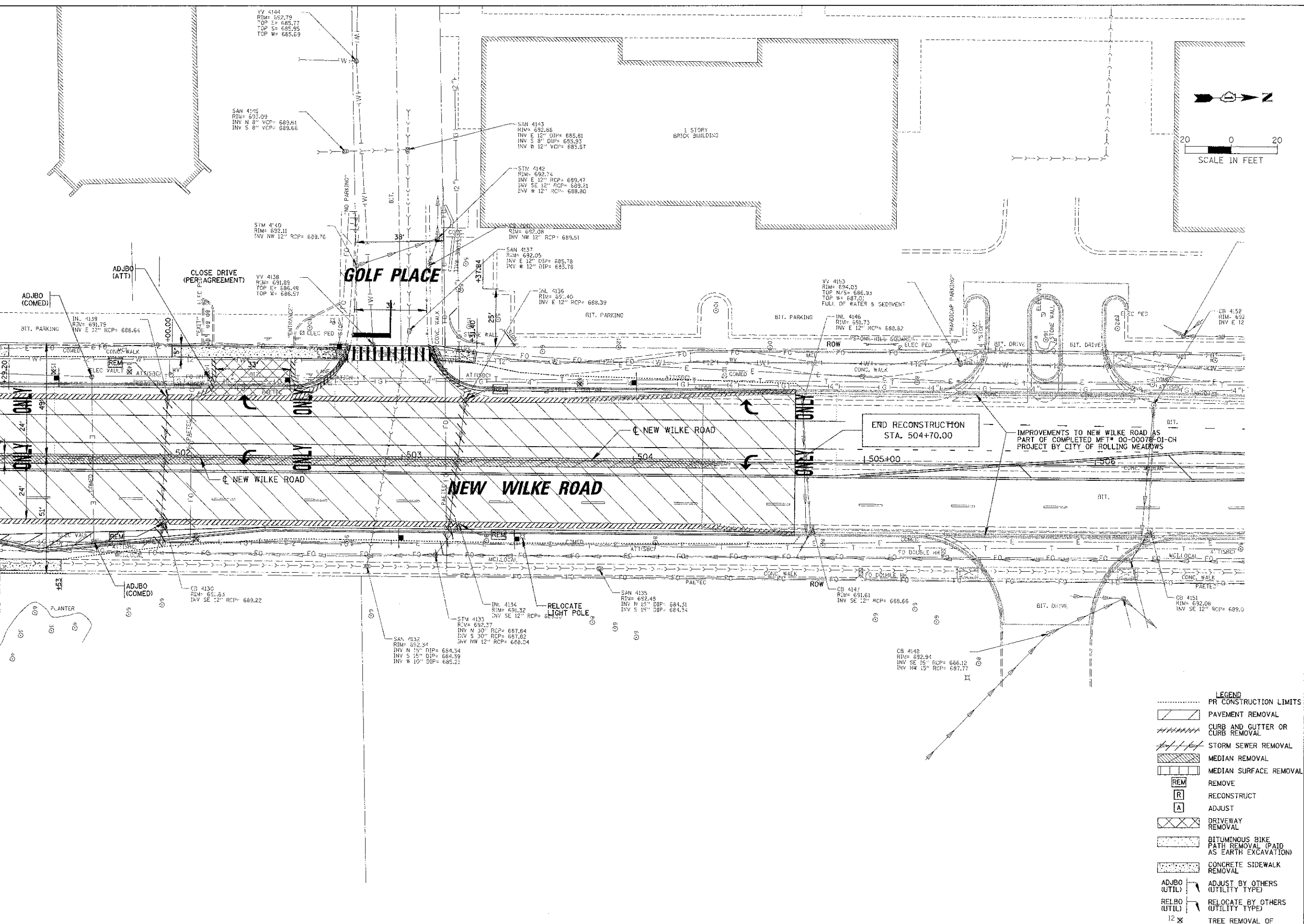


SEE SHEET NO. 19
MATCH LINE STA. 501 + 25



- LEGEND**
- PR CONSTRUCTION LIMITS
 - ////// PAVEMENT REMOVAL
 - ##### CURB AND GUTTER OR CURB REMOVAL
 - ||||| STORM SEWER REMOVAL
 - ||||| MEDIAN REMOVAL
 - ||||| MEDIAN SURFACE REMOVAL
 - REM REMOVE
 - R RECONSTRUCT
 - A ADJUST
 - XXXXX DRIVEWAY REMOVAL
 - BITUMINOUS BIKE PATH REMOVAL (PAID AS EARTH EXCAVATION)
 - CONCRETE SIDEWALK REMOVAL
 - ADJBO (UTIL) ADJUST BY OTHERS (UTILITY TYPE)
 - RELO (UTIL) RELOCATE BY OTHERS (UTILITY TYPE)
 - 12x TREE REMOVAL OF DIAMETER SHOWN

FILE NAME =	USER NAME = mgolder@varg	DESIGNED - BLL	REVISED - 10-22-12	STATE OF ILLINOIS DEPARTMENT OF TRANSPORTATION	IL RTE 58 (GOLF ROAD) AND NEW WILKE ROAD IMPROVEMENTS EXISTING CONDITIONS AND REMOVAL PLAN NEW WILKE ROAD	F.A.P. RTE.	SECTION	COUNTY	TOTAL SHEETS	SHEET NO.
NAE2LNDG19-088823CWIPLA19050923-0809H		DRAWN - PMM	REVISED - 10/16/12 ELIM. PR ROW AT NE CORNER GOLF / NEW WILKE. IMPROVEMENTS REVISED TO FIT WITHIN EX ROW.			0559	00-00078-00-CH	COOK	116	24
		PLCT SCALE = 20'				SCALE: 20'	SHEET NO. 9 OF 9 SHEETS	STA. 501+25 TO STA. 506+25	FED. ROAD DIST. NO.	ILLINOIS FED. AID PROJECT
		PLCT DATE = 12/17/2012	DATE = 8/06/12							