

PLAN	DESIGNED BY	DATE
NOTED	BY	
NOTED	BY	
NOTED	BY	
NOTED	BY	
NOTED	BY	

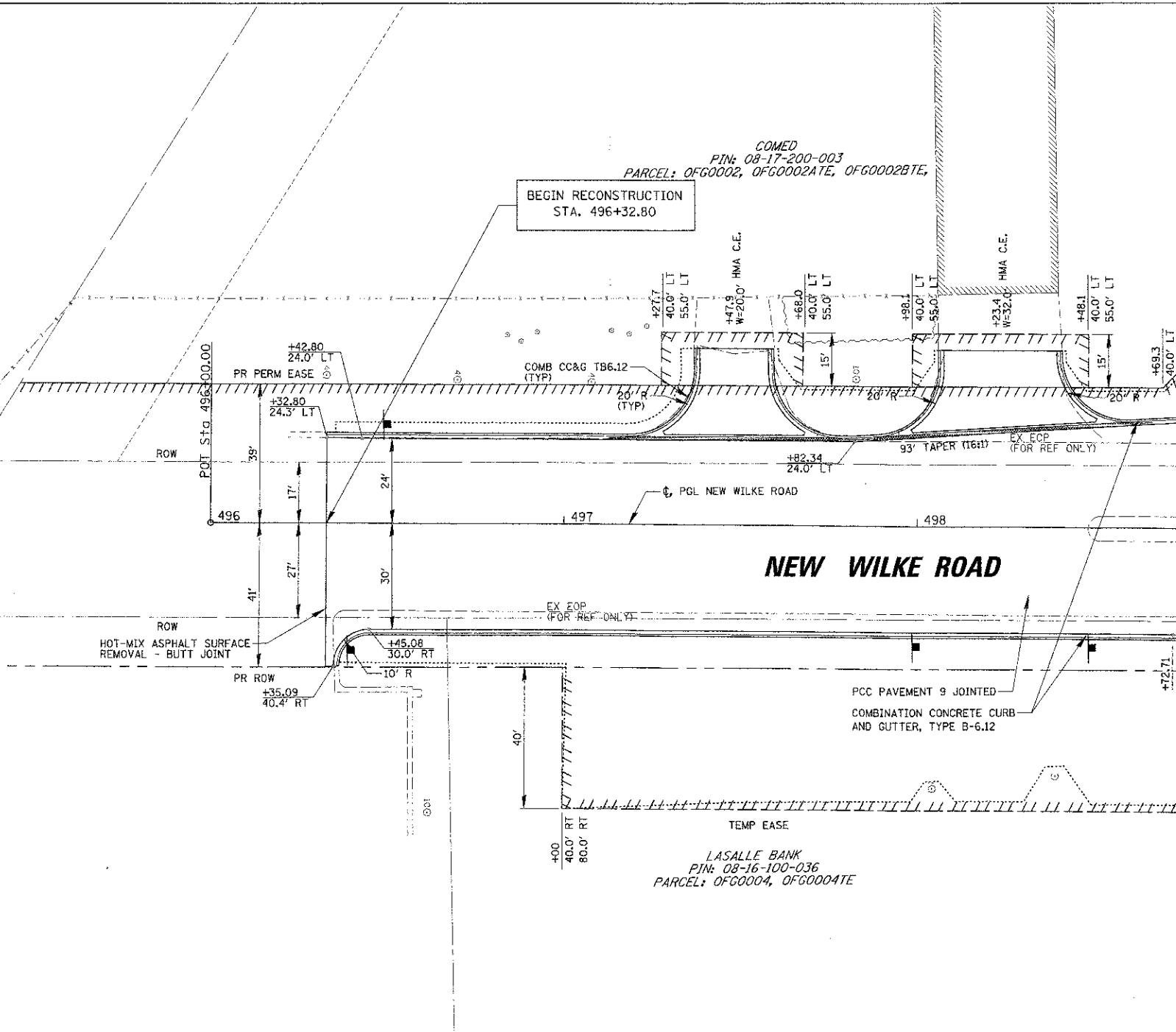
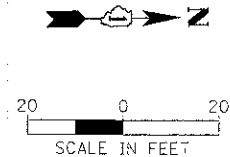
PROFILE	DESIGNED BY	DATE
NOTED	BY	
NOTED	BY	
NOTED	BY	
NOTED	BY	
NOTED	BY	

**JANE ADDAMS
MEMORIAL TOLLWAY
I-90**

**BEGIN RECONSTRUCTION
STA. 496+32.80**

COMED
PIN: 08-17-200-003
PARCEL: OFG0002, OFG0002ATE, OFG0002BTE,

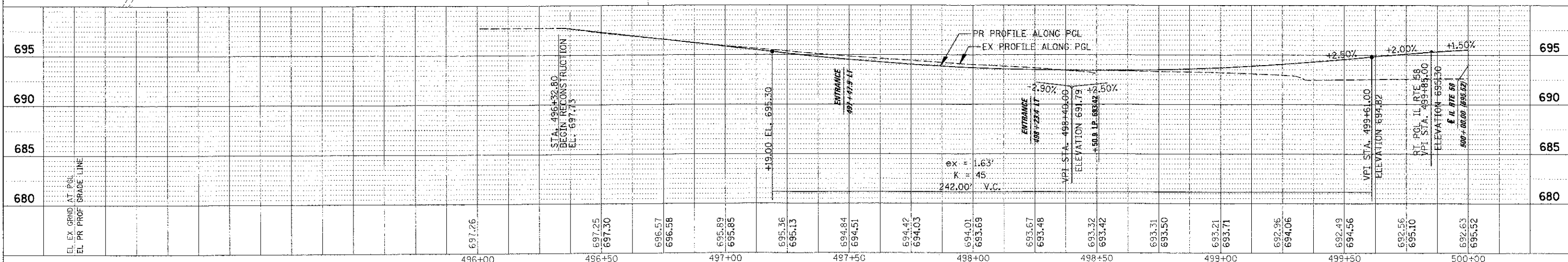
LASALLE BANK
PIN: 08-16-100-036
PARCEL: OFG0004, OFG0004TE



**MATCH LINE STA. 498+75
SEE SHEET NO. 28**

LEGEND

- PR CONSTRUCTION LIMITS
- - - PROFILE GRADE LINE
- EXISTING ROW
- - - PROPOSED ROW
- ////// TEMPORARY EASEMENT
- [Cross-hatched box] PCC BASE CRSE W/O WITH PAVEMENT OVERLAY
- [Diagonal lines box] PAVEMENT OVERLAY
- [Hatched box] SIDEWALK RAMPS
- [Dashed box] DETECTABLE WARNINGS
- [Solid box] DEPRESSED CURB



FILE NAME =	USER NAME = mvdur	DESIGNED - BLL	REVISED -	STATE OF ILLINOIS DEPARTMENT OF TRANSPORTATION	IL RTE 58 (GOLF ROAD) AND NEW WILKE ROAD IMPROVEMENTS PROPOSED ROADWAY AND PROFILE NEW WILKE ROAD	SECTION	COUNTY	TOTAL SHEET NO.	
SCALE = 2"	CHECKED - JCS	REVISED -	0559			00-00078-00-CH	COOK	116	32
DATE = 8/06/12	DATE - 8/06/12	REVISED -	CONTRACT NO. 83735						
						SCALE: 204, 5V		SHEET NO. 8 OF 10 SHEETS	