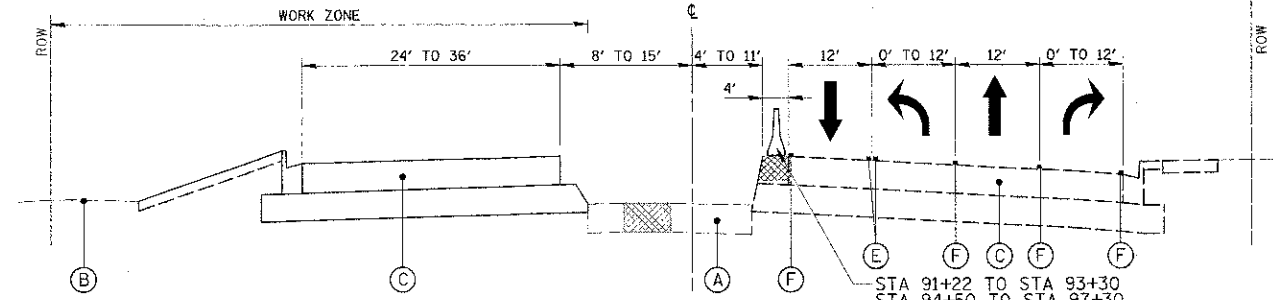


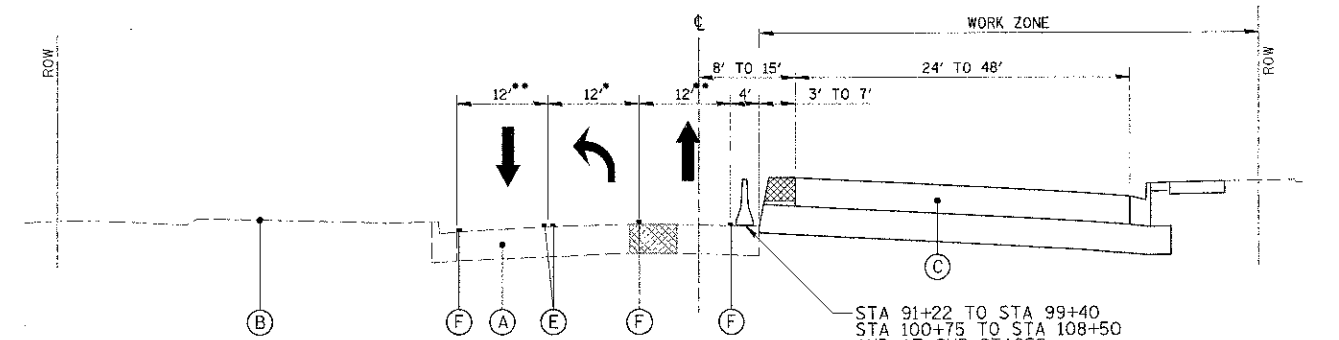
• STA. 83+13 TO STA. 88+98  
 STA. 91+24 TO STA. 99+48  
 STA. 100+48 TO STA. 105+63  
 STA. 106+25 TO STA. 112+63  
 STA. 113+37 TO STA. 116+00

**TYPICAL SECTION - PRE STAGE  
 GOLF ROAD**  
 STA. 83 + 13.48 TO STA. 120 + 00



STA 91+22 TO STA 93+30  
 STA 94+50 TO STA 97+30  
 STA 97+40 TO NEW WILKE  
 AND AT SUB-STAGES:  
 TEMP BAR WALL WITH IMP ATTN TEMP NRD TL2  
 ALL OTHER LOCATIONS:  
 DRUM W/ STEADY BURN LIGHT  
 OR  
 DOUBLE VERTICAL PANEL W/  
 STEADY BURN BI-DIRECTIONAL LIGHT  
 AS SHOWN IN PLANS AND AS DIRECTED BY ENGINEER

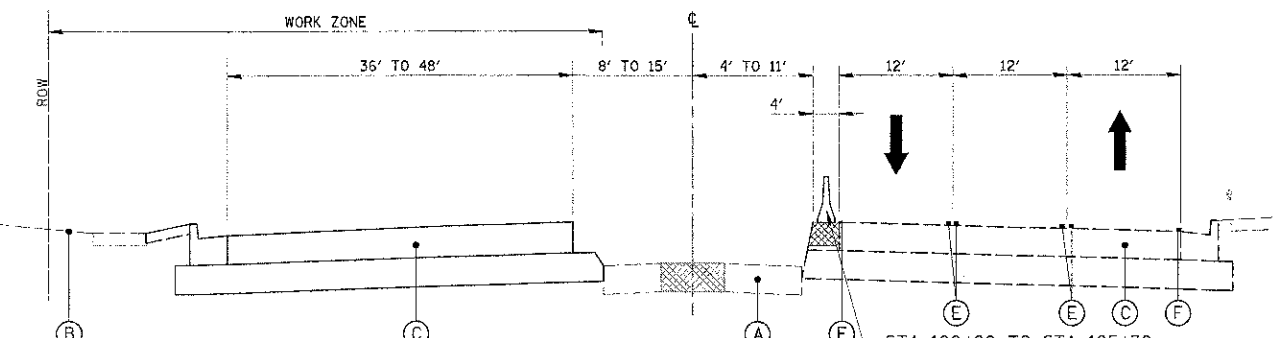
**TYPICAL SECTION - STAGE 2  
 GOLF ROAD**  
 STA. 91 + 00 TO STA. 100 + 00



• VARIES 0' TO 12'  
 STA. 91+00 TO STA. 93+80  
 •• VARIES TO 11' FROM  
 STA. 109+38 TO STA. 112+14

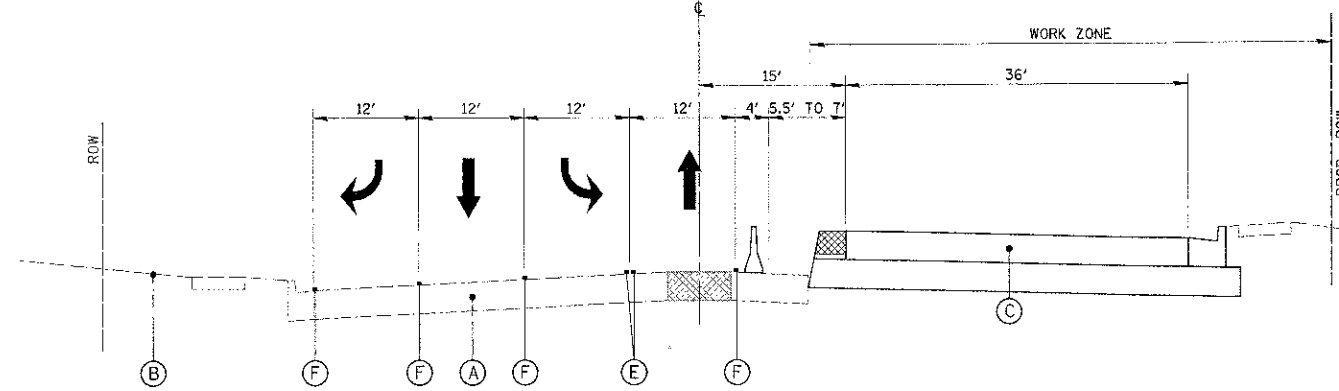
**TYPICAL SECTION - STAGE 1  
 GOLF ROAD**  
 STA. 91 + 00 TO STA. 100 + 00  
 STA. 105 + 00 TO STA. 114 + 00

STA 91+22 TO STA 99+40  
 STA 100+75 TO STA 108+50  
 AND AT SUB-STAGES:  
 TEMP BAR WALL WITH IMP ATTN TEMP NRD TL2  
 ALL OTHER LOCATIONS:  
 DRUM W/ STEADY BURN LIGHT  
 OR  
 DOUBLE VERTICAL PANEL W/  
 STEADY BURN BI-DIRECTIONAL LIGHT  
 AS SHOWN IN PLANS AND AS DIRECTED BY ENGINEER

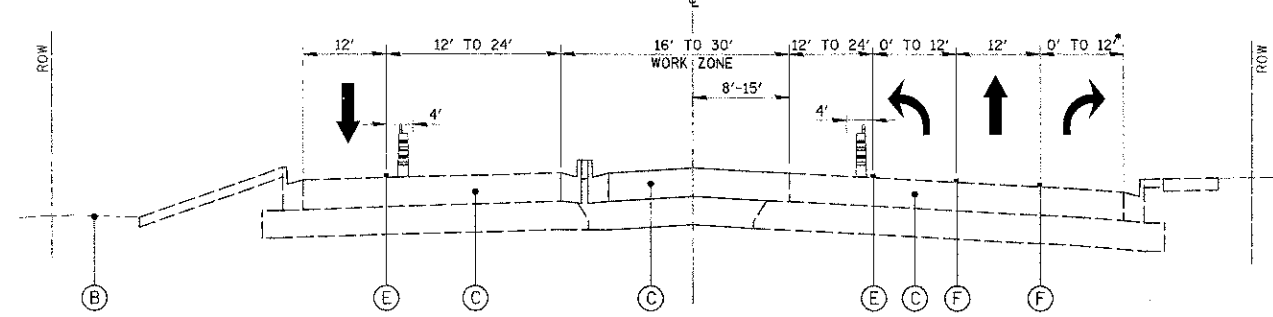


STA 100+80 TO STA 105+30  
 STA 106+60 TO STA 112+40  
 AND AT SUB-STAGES:  
 TEMP BAR WALL WITH IMP ATTN TEMP NRD TL2  
 ALL OTHER LOCATIONS:  
 DRUM W/ STEADY BURN LIGHT  
 OR  
 DOUBLE VERTICAL PANEL W/  
 STEADY BURN BI-DIRECTIONAL LIGHT  
 AS SHOWN IN PLANS AND AS DIRECTED BY ENGINEER

**TYPICAL SECTION - STAGE 2  
 GOLF ROAD**  
 STA. 100 + 00.00 TO STA. 114 + 00

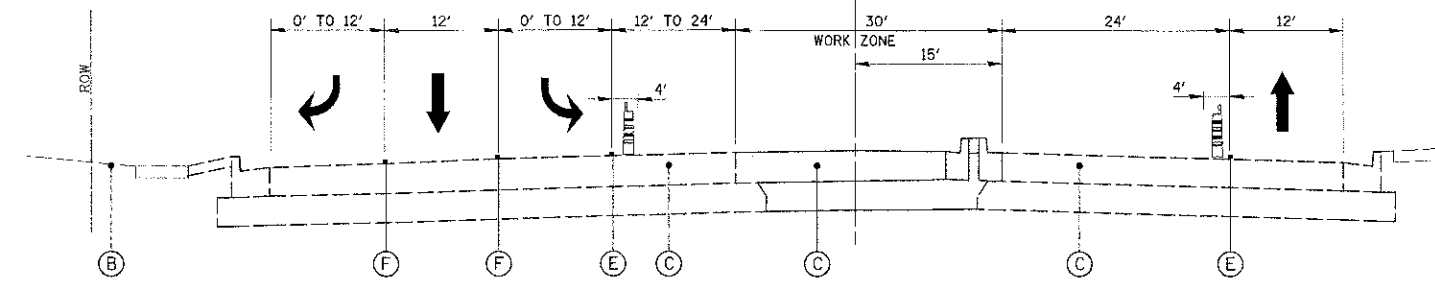


**TYPICAL SECTION - STAGE 1  
 GOLF ROAD**  
 STA. 100 + 00 TO STA. 105 + 00



• RIGHT TURN LANE AT GOLF ROAD ONLY

**TYPICAL SECTION - STAGE 3  
 GOLF ROAD**  
 STA. 92 + 32.78 TO STA. 100 + 00  
 STA. 105 + 00 TO STA. 114 + 00



**TYPICAL SECTION - STAGE 3  
 GOLF ROAD**  
 STA. 100 + 00 TO STA. 105 + 00

**LEGEND**

- (A) EXISTING ROADWAY
- (B) EXISTING GROUND
- (C) PROPOSED ROADWAY
- (D) TEMPORARY PAVEMENT
- (E) TEMPORARY PAVEMENT MARKING - LINE, YELLOW  
TEMP RAIS REF PVT MKR
- (F) TEMPORARY PAVEMENT MARKING - LINE, WHITE  
TEMP RAIS REF PVT MKR

- TEMPORARY BARRIER WALL
- DRUM W/STEADY BURN BI-DIRECTIONAL LIGHT
- DOUBLE VERTICAL PANEL (A PANEL ON EACH SIDE OF THE POST) W/STEADY BURN BI-DIRECTIONAL LIGHT
- TEMPORARY PAVEMENT, 8"
- TRAFFIC DIRECTION