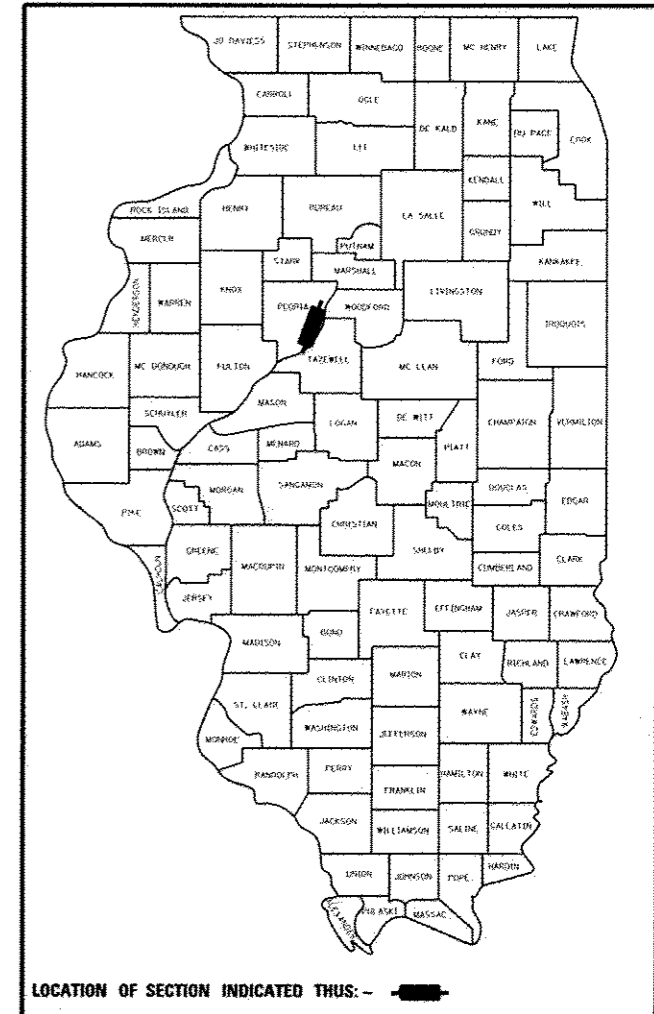


SEE SHEET 2 FOR INDEX OF SHEET AND STANDARD DRAWINGS

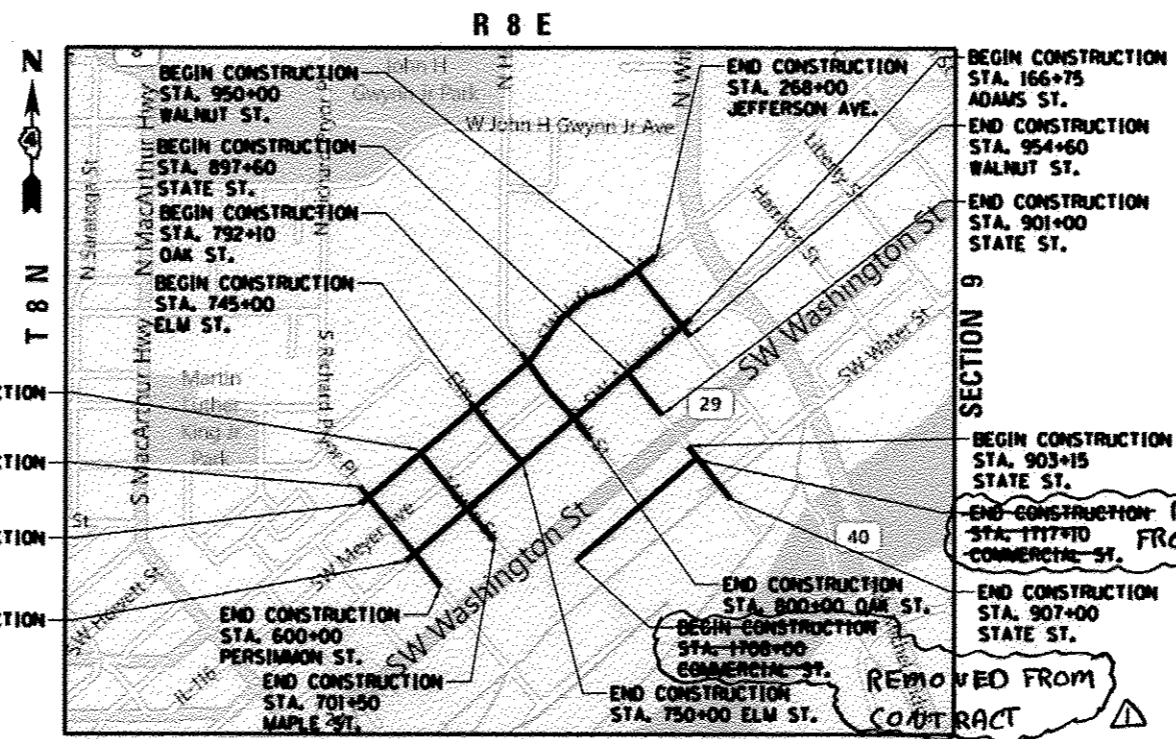
STATE OF ILLINOIS
DEPARTMENT OF TRANSPORTATION
DIVISION OF HIGHWAYS
**PROPOSED TIGER II
WAREHOUSE DISTRICT
IMPROVEMENTS**

FAU 6673 (JEFFERSON AVENUE)
FAU 6674 (ADAMS STREET)
FAU 6639 (OAK STREET)
SECTION 12-00356-01-PV
PROJECT TIG-5093(161)
CITY OF PEORIA
JOB C-94-110-12

F.A.U. RTE.	SECTION	COUNTY	TOTAL SHEETS	SHEET NO.
	12-00356-01-PV	PEORIA	519	1
ILLINOIS CONTRACT NO. 89626				



 KURT BIALOBRESKI 062-0586674 DATE SIGNED: 7-17-12 LIC. EXP. DATE: 11/30/2013 HANSON	 BRUCE BROWN 157-000756 DATE SIGNED: 7/18/12 LIC. EXP. DATE: 8/31/2013 FARNWORTH STREETScape	 JAY ZEMAN 062-046824 DATE SIGNED: 7/18/2012 LIC. EXP. DATE: 11/30/2013 FARNWORTH LIGHTING
 ROBERT M. MARKUNAS 062-053696 DATE SIGNED: 7/17/12 LIC. EXP. DATE: 11/30/2013 CMT	 MICHAEL C. HUTCHINSON 062-059625 DATE SIGNED: 7/17/12 LIC. EXP. DATE: 11/30/2013 TERRA	 THOMAS V. NGO 062-058379 DATE SIGNED: 07/17/2012 LIC. EXP. DATE: 11/30/2013 MILLENIA



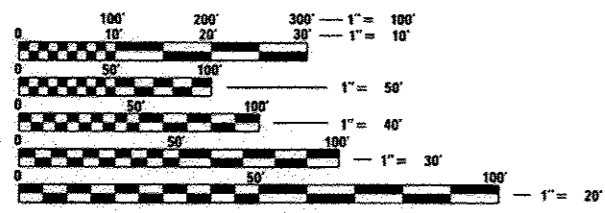
BEGIN CONSTRUCTION STA. 245+80 MAPLE ST.
 BEGIN CONSTRUCTION STA. 591+87 PERSIMMON ST.
 BEGIN CONSTRUCTION STA. 240+25 JEFFERSON AVE.
 BEGIN CONSTRUCTION STA. 140+10 ADAMS ST.

BEGIN CONSTRUCTION STA. 166+75 ADAMS ST.
 END CONSTRUCTION STA. 954+60 WALNUT ST.
 END CONSTRUCTION STA. 901+00 STATE ST.
 BEGIN CONSTRUCTION STA. 903+15 STATE ST.
 END CONSTRUCTION STA. 907+00 STATE ST.

END CONSTRUCTION STA. 1177+10 COMMERCIAL ST. FROM CONTRACT
 END CONSTRUCTION STA. 800+00 OAK ST.
 BEGIN CONSTRUCTION STA. 1700+00 COMMERCIAL ST.
 END CONSTRUCTION STA. 750+00 ELM ST. REMOVED FROM CONTRACT

GROSS LENGTH = 6210 FT. = 1.18 MILE
 NET LENGTH = 6210 FT. = 1.18 MILE

ROUTE	STREET	ADT (2033)	SU	MU	FUNCTIONAL CLASSIFICATION	DESIGN SPEED
FAU 6673	JEFFERSON AVENUE	9450	0	2%	URBAN ARTERIAL	30
FAU 6674	ADAMS STREET	8200	0	4%	URBAN ARTERIAL	30
FAU 6639	OAK STREET	1650	0	4%	COLLECTOR	25
	MAPLE STREET	975	0	2%	LOCAL	25
	ELM STREET	975	0	10%	LOCAL	25
	STATE STREET	4350	0	4%	LOCAL	25
	WALNUT STREET	750	0	3%	LOCAL	25
	COMMERCIAL STREET	2500	0	4%	LOCAL	25



FULL SIZE PLANS HAVE BEEN PREPARED USING STANDARD ENGINEERING SCALES. REDUCED SIZED PLANS WILL NOT CONFORM TO STANDARD SCALES. IN MAKING MEASUREMENTS ON REDUCED PLANS, THE ABOVE SCALES MAY BE USED.

J.U.L.I.E.
 JOINT UTILITY LOCATION INFORMATION FOR EXCAVATION
 1-800-892-0123
 OR 811

PROJECT ENGINEER KURT BIALOBRESKI, P.E.
 PROJECT MANAGER CINDY LOOS, P.E.
 CAT#034653-00D

10/24/12 DATE: 07/18/12

© Copyright Hanson Professional Services Inc. 2012

Hanson Professional Services Inc.
 7625 N. University St., Suite 200
 Peoria, Illinois 61614
 Offices Nationwide

PRINTED BY THE AUTHORITY OF THE STATE OF ILLINOIS

APPROVED: 7-20 12
 J.M. Smith
 CITY ENGINEER

PASSED: 07/23 12
 DISTRICT ENGINEER OF LOCAL ROADS & STREETS

Releasing For Bid Based on Limited Review: JULY 23 12
 DEPUTY DIRECTOR OF HIGHWAYS, REGION THREE ENGINEER

STATE OF ILLINOIS
 DEPARTMENT OF TRANSPORTATION