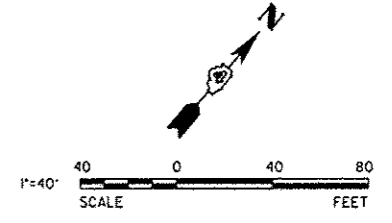
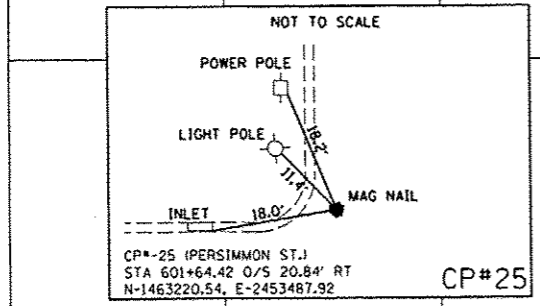


PERSIMMON ST.

MAPLE ST

WASHINGTON ST.



CP# 25

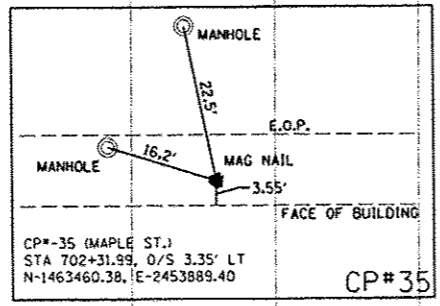
N 1,463,486.481  
E 2,453,863.241

45+00

50+00

N 1,463,202.790  
E 2,453,530.079

CP# 35



PROP PERSIMMON ST

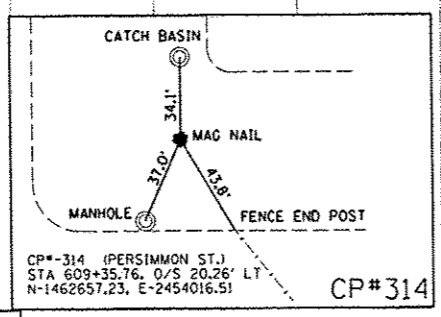
1700+00

1705+00

1710+00

PERSIMMON ST  
STA 604+40.07

1605+00



CP# 314



850 North Main Street, Morton, IL 61550  
 309.321.8141 voice, 309.321.8142 fax  
 www.mps-ll.com

**MILLENNIA PROFESSIONAL SERVICES**

FILE NAME =	USER NAME = davis00878	DESIGNED - DE	REVISED -  10/24/12
cr:\pwise\work\do_not_delete\dms\98379\104	RL0155-ehs-ATB04.dgn	DRAWN - DE	REVISED -
		CHECKED - TVN	REVISED -
		DATE - 10/24/2012	REVISED -

STATE OF ILLINOIS  
 DEPARTMENT OF TRANSPORTATION

TIGER II - WAREHOUSE DISTRICT  
 ALIGNMENT, BENCHMARKS AND TIES

SCALE: 1"=40' SHEET NO. OF SHEETS STA. TO STA.

F.A.U. RTE.	SECTION	COUNTY	TOTAL SHEETS	SHEET NO.
	12-00356-01-PV	PEORIA	519	43
CONTRACT NO. 89626			ILLINOIS FED. AID PROJECT TIG-5093158	

ATB04