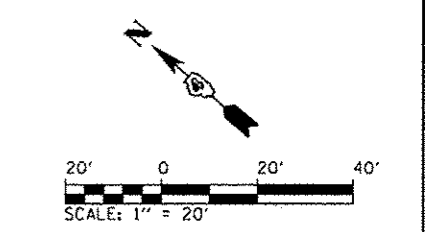
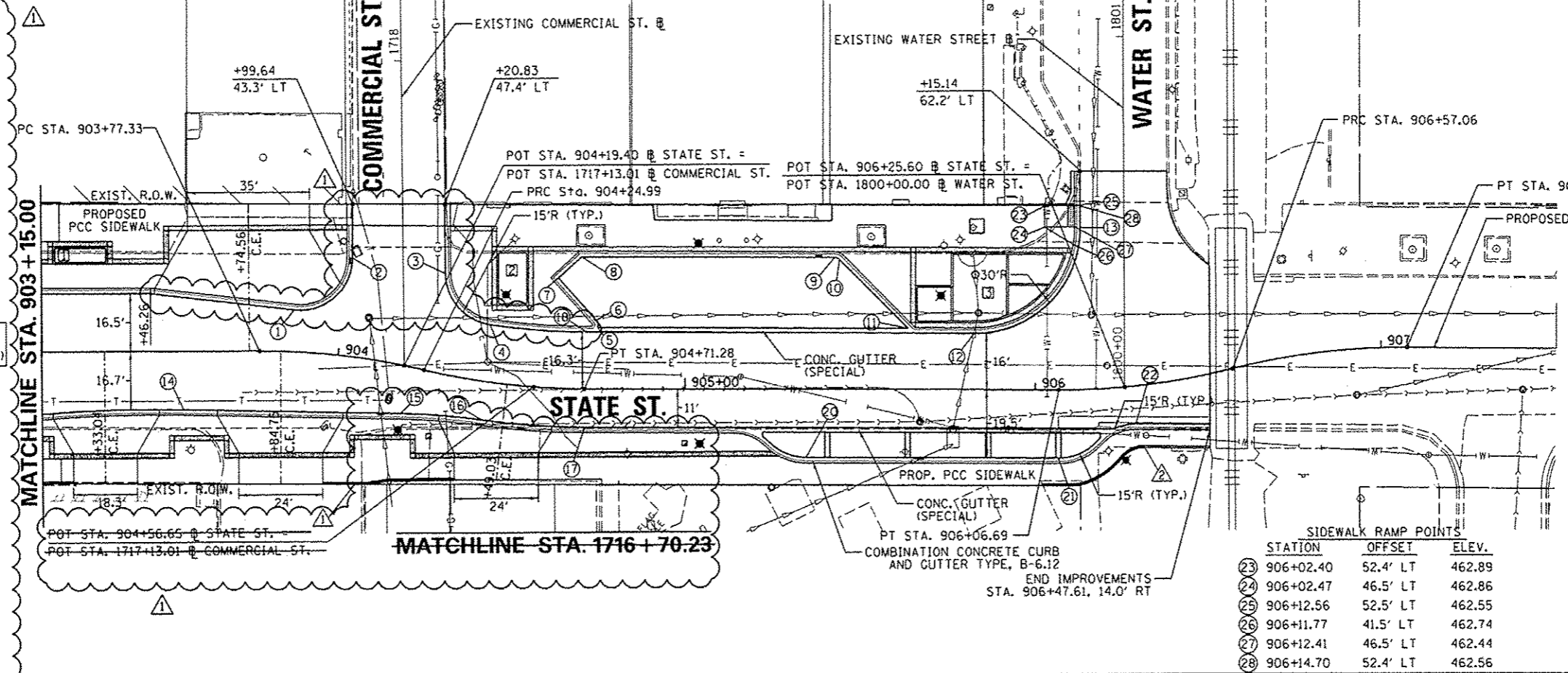


DATE	
BY	
PLAN	
NO.	
DATE	
BY	
PROFILE	
NO.	
DATE	
BY	

DATE	
BY	
PROFILE	
NO.	
DATE	
BY	

RADIUS POINTS		
STATION	OFFSET	ELEV.
1	903+07.72	14.5' LT 467.17
2	904+00.70	30.6' LT 466.10
3	904+24.77	27.7' LT 465.57
4	904+43.50	15.0' LT 465.23
5	904+73.12	16.3' LT 464.43
6	904+74.70	19.6' LT 464.32
7	904+59.31	34.0' LT 464.49
8	904+61.04	37.5' LT 464.44
9	905+42.67	37.6' LT 462.96
10	905+44.08	37.0' LT 462.93
11	905+64.43	16.6' LT 462.83
12	905+82.63	16.0' LT 462.60
13	906+14.45	46.2' LT 462.45
14	903+55.60	16.7' RT 468.48
15	904+10.55	14.1' RT 466.05
16	904+49.93	38.7' RT 464.75
17	904+68.45	41.2' RT 464.74
18	904+97.86	11.0' RT 463.96
19	905+13.76	11.0' RT 463.70
20	905+34.69	19.5' RT 463.41
21	906+06.69	19.5' RT 462.79
22	906+27.88	10.8' RT 462.31
23	903+86.97	11.92' LT 467.25
24	904+01.03	28.05' LT 466.42
25	904+24.67	28.21' LT 465.57
26	904+41.82	16.25' LT 465.26
27	904+21.01	13.65' RT 466.08
28	904+43.39	11.00' RT 465.55
29	904+71.28	11.00' RT 464.58
30	904+71.77	16.25' LT 464.45



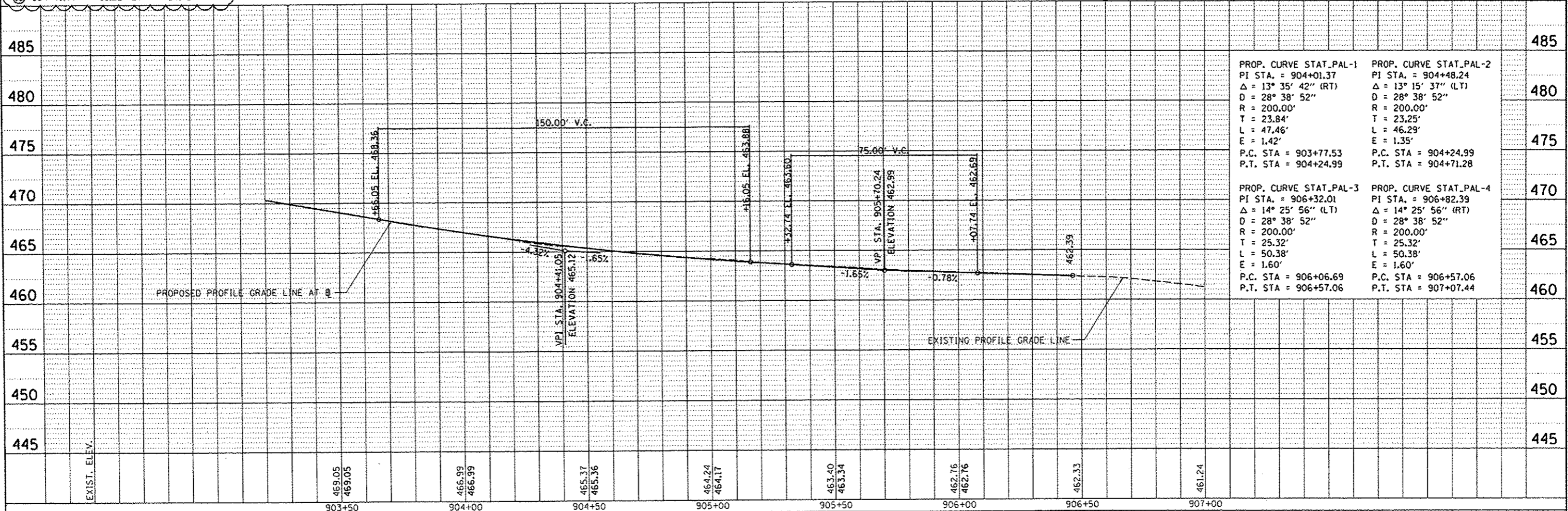
PROPOSED CONCRETE CURB, TYPE B-6  
 BEGIN: STA. 904+00.00  
 34.1' RT TO BOC  
 END: STA. 904+22.67  
 37.1' RT TO BOC  
 STA. 904+38.61  
 29.2' RT TO BOC

PROPOSED CONCRETE CURB, TYPE B-6  
 BEGIN: STA. 906+02.00  
 27.4' RT TO BOC  
 END: STA. 906+46.32  
 20.8' RT TO BOC

SEE STREETSCAPE PLANS FOR PROPOSED IMPROVEMENTS BEHIND CURB LINES

**CMT**  
 CRAWFORD, MURPHY & TILLY, INC.  
 CONSULTING ENGINEERS  
 License No. 184-000613

SIDEWALK RAMP POINTS		
STATION	OFFSET	ELEV.
23	906+02.40	52.4' LT 462.89
24	906+02.47	46.5' LT 462.86
25	906+12.56	52.5' LT 462.55
26	906+11.77	41.5' LT 462.74
27	906+12.41	46.5' LT 462.44
28	906+14.70	52.4' LT 462.56



PROP. CURVE STAT_PAL-1	PROP. CURVE STAT_PAL-2
PI STA. = 904+01.37	PI STA. = 904+48.24
$\Delta = 13^\circ 35' 42''$ (RT)	$\Delta = 13^\circ 15' 37''$ (LT)
D = 28' 38' 52"	D = 28' 38' 52"
R = 200.00'	R = 200.00'
T = 23.84'	T = 23.25'
L = 47.46'	L = 46.29'
E = 1.42'	E = 1.35'
P.C. STA = 903+77.53	P.C. STA = 904+24.99
P.T. STA = 904+24.99	P.T. STA = 904+71.28

PROP. CURVE STAT_PAL-3	PROP. CURVE STAT_PAL-4
PI STA. = 906+32.01	PI STA. = 906+82.39
$\Delta = 14^\circ 25' 56''$ (LT)	$\Delta = 14^\circ 25' 56''$ (RT)
D = 28' 38' 52"	D = 28' 38' 52"
R = 200.00'	R = 200.00'
T = 25.32'	T = 25.32'
L = 50.38'	L = 50.38'
E = 1.60'	E = 1.60'
P.C. STA = 906+06.69	P.C. STA = 906+57.06
P.T. STA = 906+57.06	P.T. STA = 907+07.44