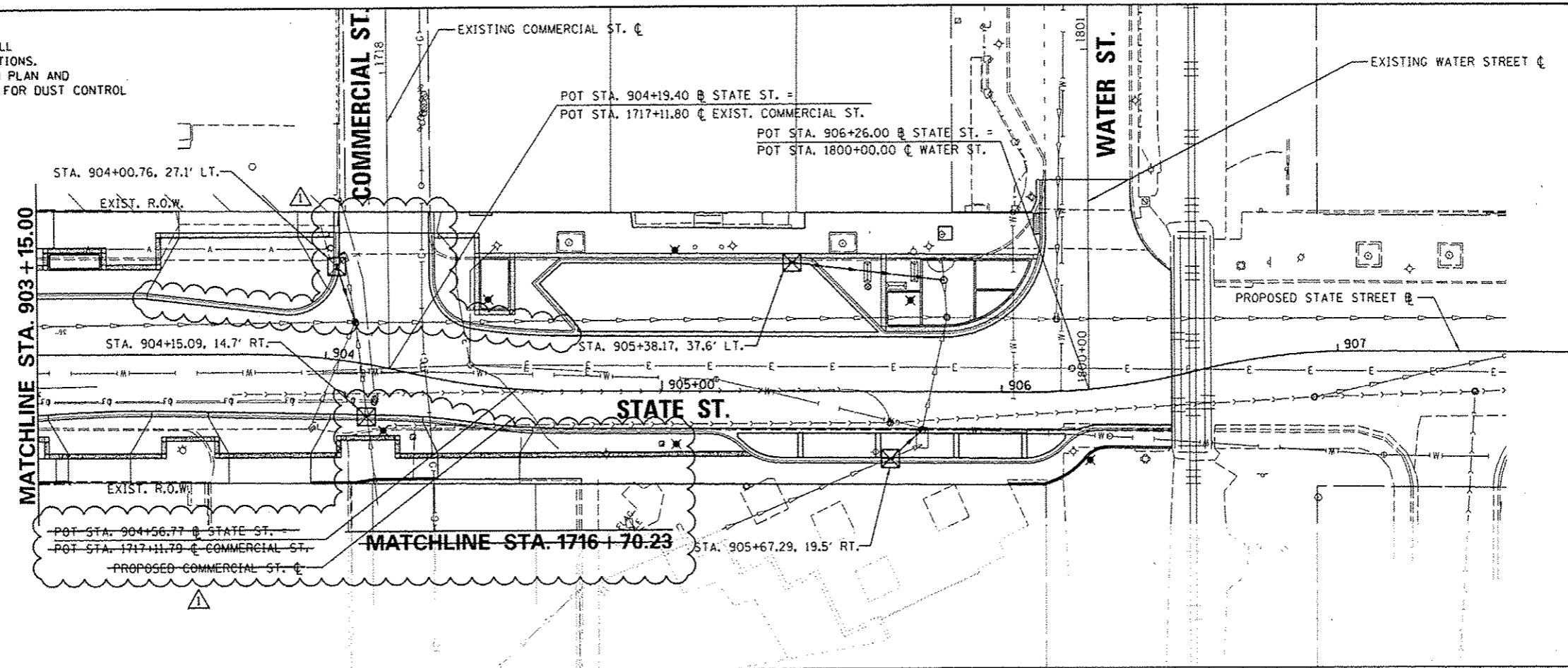
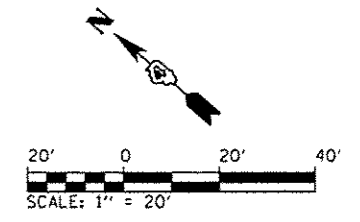



- NOTES:
1. INLET FILTERS SHALL BE PROVIDED AT ALL EXISTING STORM SEWER STRUCTURE LOCATIONS.
  2. SEE STORM WATER POLLUTION PREVENTION PLAN AND PROVISIONS OF THE NPDES PERMIT ILR10 FOR DUST CONTROL CLEANING OF PAVEMENT REQUIREMENTS.

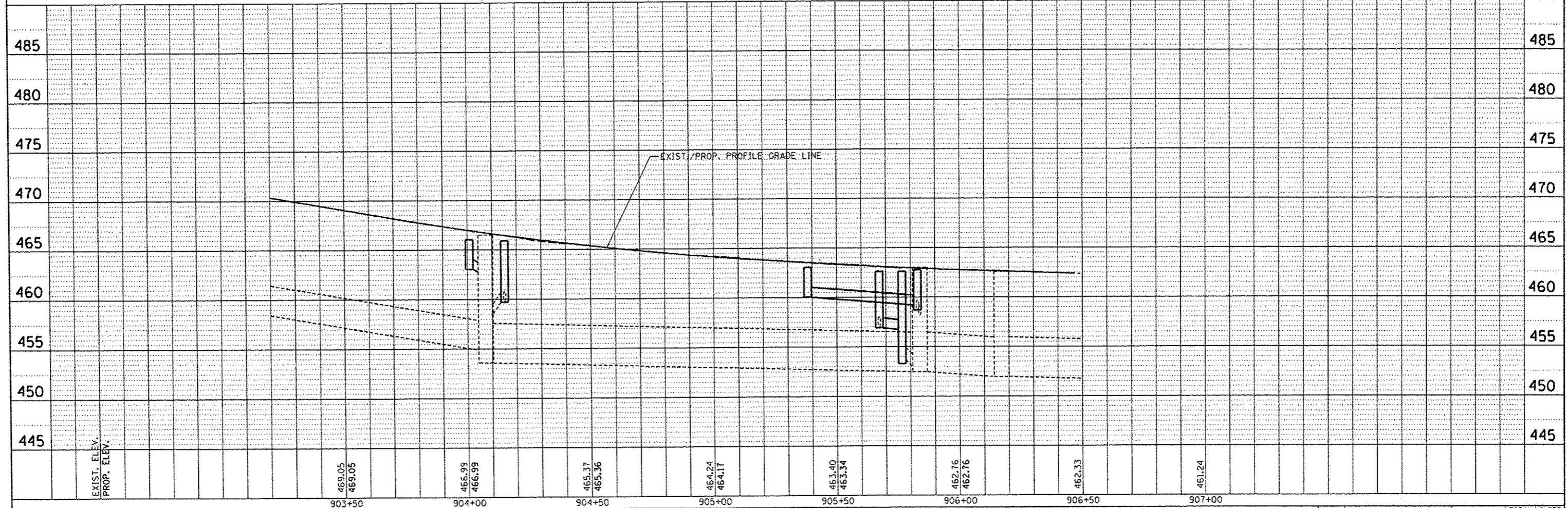
LEGEND  
 INLET FILTERS 

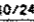


DATE	
BY	
REVISIONS	
NO.	
DESCRIPTION	
DATE	
BY	
NO.	
DESCRIPTION	
DATE	
BY	
NO.	
DESCRIPTION	

DATE	
BY	
REVISIONS	
NO.	
DESCRIPTION	
DATE	
BY	
NO.	
DESCRIPTION	
DATE	
BY	
NO.	
DESCRIPTION	

 **CMT**  
 CRAWFORD, MURPHY & TILLY, INC.  
 CONSULTING ENGINEERS  
 License No. 184-000613



FILE NAME:	USER NAME: davis03878	DESIGNED: - RMM	REVISED: -  10/24/12	<b>STATE OF ILLINOIS DEPARTMENT OF TRANSPORTATION</b>	<b>STATE STREET EROSION CONTROL PLAN</b>		F.A.U. RTE. 12-00356-01-PV	COUNTY: PEORIA	TOTAL SHEETS: 519	SHEET NO.: 295
cr:\pwise\work\do_not_delete\dms73328\041818155-shl-eros109.dgn		DRAWN: - RJE	REVISED: -		SCALE: 1" = 20'		SHEET NO. OF SHEETS	STA. 903+15.00 TO STA. 906+46.43	CONTRACT NO. 89626	
PLOT SCALE: 39.9999 / 10		CHECKED: - EJM	REVISED: -		ILLINOIS FED. AID PROJECT TIG-50931581					
PLOT DATE: 10/23/2012		DATE: - 10/24/2012	REVISED: -							