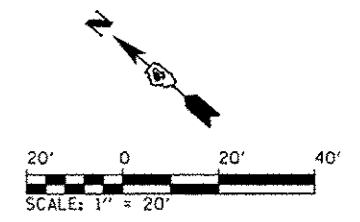
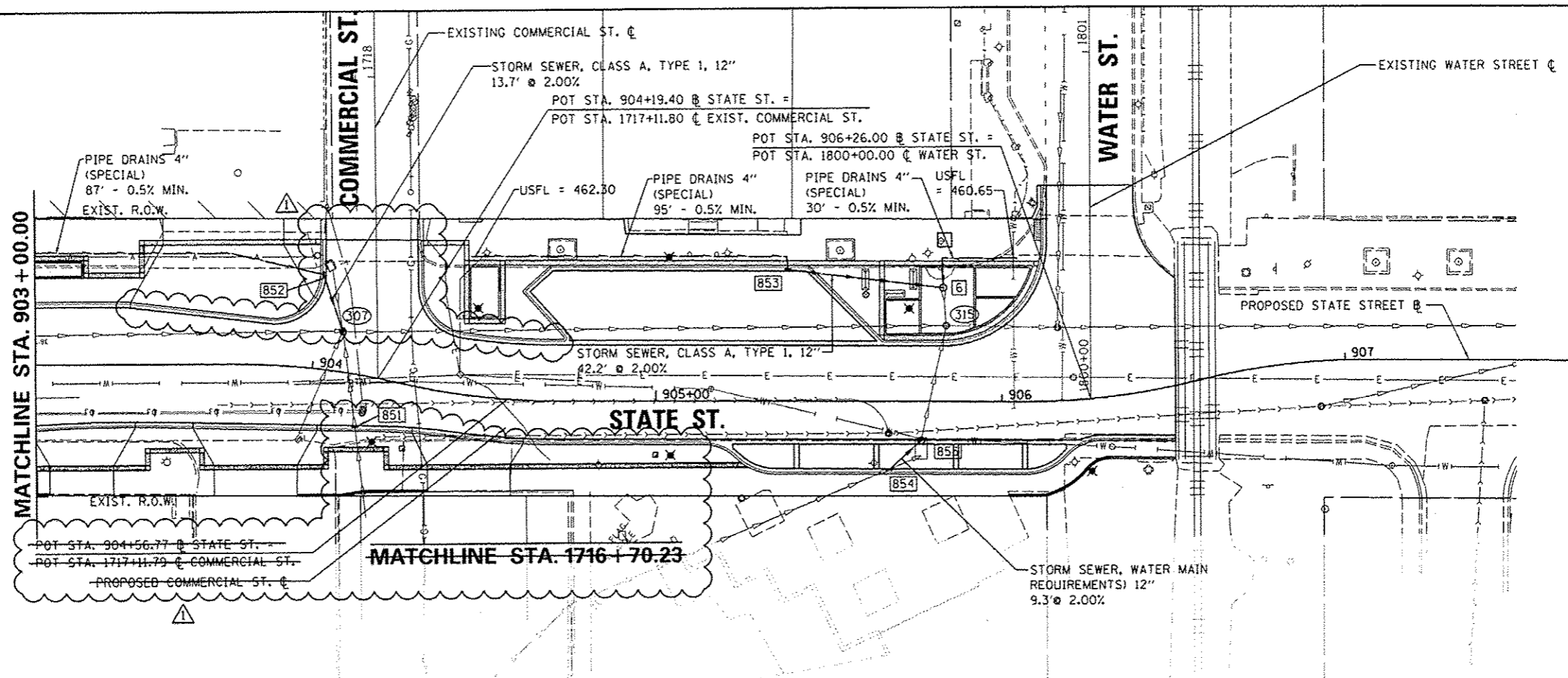
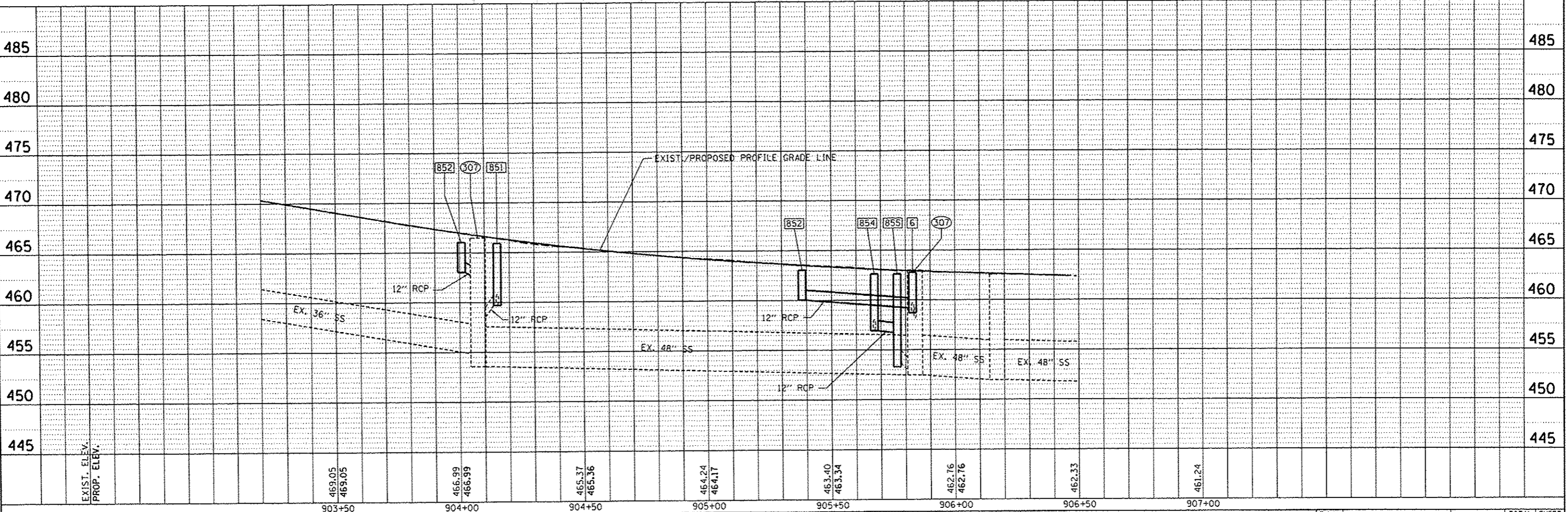


- 851 STA. 904+15.09, 14.7' RT.  
INLET TY G-1  
RIM = 466.12  
INV (SW) = 459.81 (EX.)  
INV (NE) = 459.70 (EX.)
- 852 STA. 904+00.76, 27.1' LT.  
INLET TY G-1  
RIM = 466.42  
INV (S) = 463.02  
INV (N) = 463.82
- 307 STA. 904+07.37, 11.5' LT.  
EX. MH, 6' DIA., T-1 F, CL  
RIM = 466.23  
INV (N) = 462.75  
INV (SW) = 458.58 (EX.)  
INV (NW) = 454.88 (EX.)  
INV (SE) = 453.58 (EX.)
- 853 STA. 905+38.17, 37.6' LT.  
INLET TY G-1  
RIM = 462.92  
INV (SE) = 460.03  
INV (N) = 460.42
- 854 STA. 905+67.29, 19.5' RT.  
INLET TY G-1  
RIM = 463.15  
INV (W) = 457.02 (EX.)  
INV (E) = 456.92
- 855 STA. 905+76.59, 11.4' RT.  
INLET TYPE B, TY-1 F, CL  
RIM = 462.79  
INV (W) = 456.73  
INV (NE) = 453.27 (EX.)
- 315 STA. 905+83.81, 21.9' LT.  
EX. MH, 6' DIA., T-1 F, CL  
TO BE ADJUSTED  
RIM = 463.04  
INV (NE) = 458.19 (EX.)  
INV (SW) = 453.82 (EX.)  
INV (NW) = 452.47 (EX.)  
INV (SE) = 452.47 (EX.)
- 6 STA. 905+82.85, 32.8' LT.  
INLET TYPE B, TY-1 F, CL  
RIM = 463.04  
INV (NW) = 459.19  
INV (SW) = 458.70 (EX.)  
INV (NE) = 460.54



PLAN	DATE
BY	
CHECKED	
DATE	
NO.	

PROFILE	DATE
BY	
CHECKED	
DATE	
NO.	



FILE NAME :	USER NAME :	DESIGNED :	REVISED :	<b>STATE OF ILLINOIS</b> <b>DEPARTMENT OF TRANSPORTATION</b>		<b>STATE STREET</b> <b>DRAINAGE PLAN AND PROFILE</b>		F.A.U. RITE	SECTION	COUNTY	TOTAL SHEETS	SHEET NO.			
cl:\pwise_work\do_not_delete\dms73472\041040155-shd-drain\pnp109.dgn	dava08070	RMM	10/24/12					12-00356-01-PV	PEORIA	519	234				
PLOT SCALE :		DRAWN :						SCALE: 1" = 20'		SHEET NO. OF SHEETS		STA. 903+15.00 TO STA. 906+46.43		ILLINOIS FED. AID PROJECT	
PLOT DATE :		CHECKED :								CONTRACT NO. 89626		TIG-50931580			

**CMT**  
**CRAWFORD, MURPHY & TILLY, INC.**  
 CONSULTING ENGINEERS  
 License No. 184-000613