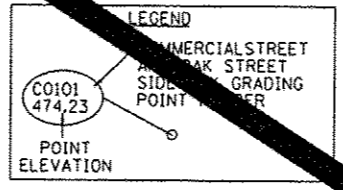


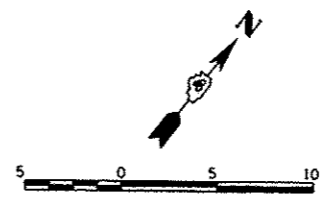
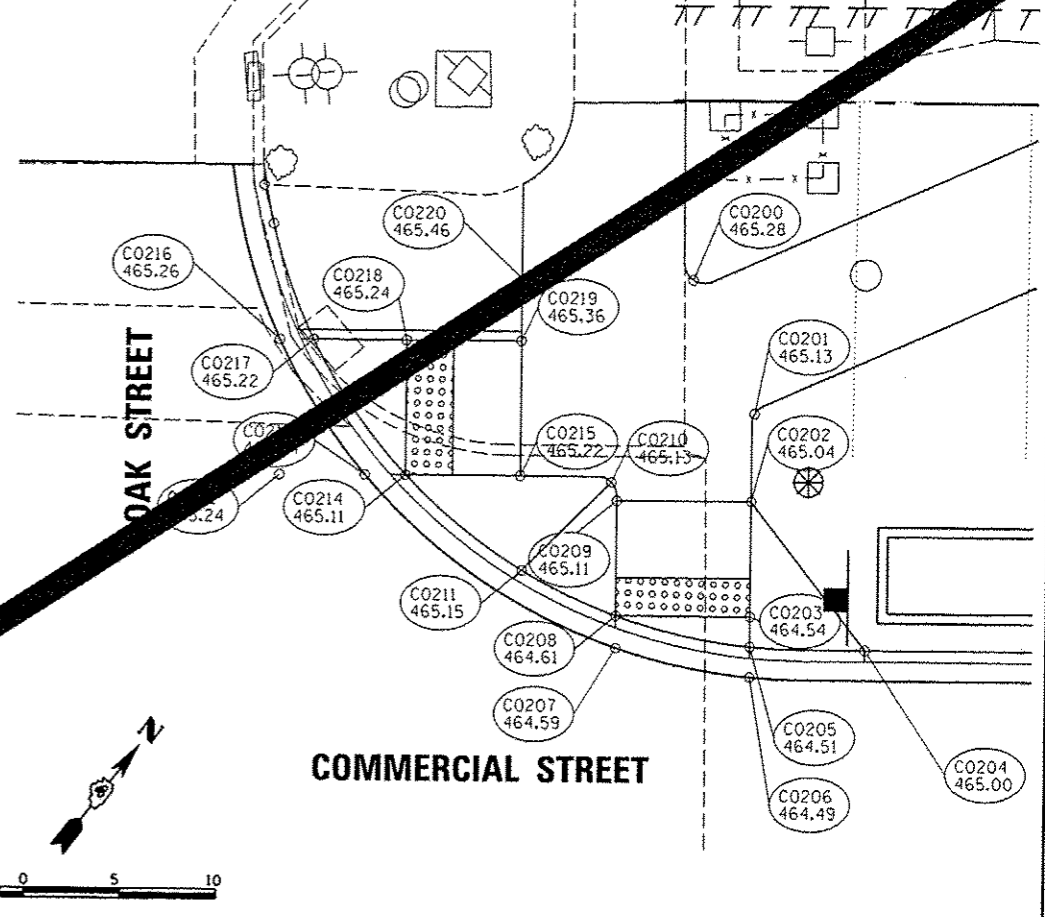
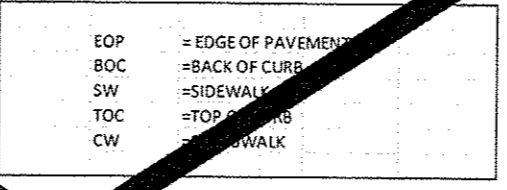
COMMERCIAL STREET AND OAK STREET INTERSECTION
WEST SIDEWALK RAMP GRADES

POINT NO.	STATION	OFFSET	SIDE	ELEVATION	LOCATION
C0100	1712+40.30	13.08	LT	465.52	TOC
C0101	1712+40.30	24.50	LT	465.74	SW
C0102	1712+45.30	13.08	LT	465.54	TOC
C0103	1712+45.30	24.50	LT	465.76	SW
C0104	1712+51.30	13.33	LT	465.10	SW
C0105	1712+51.30	24.50	LT	465.32	SW
C0106	1712+51.30	25.00	LT	465.82	TOC
C0107	1712+55.77	24.50	LT	465.40	SW
C0108	1712+55.77	25.00	LT	465.90	TOC
C0109	1712+60.26	30.11	LT	466.00	TOC
C0110	1712+55.77	29.52	LT	465.50	SW
C0111	1712+70.95	18.47	LT	465.25	SW
C0112	1712+63.24	18.47	LT	465.23	SW



COMMERCIAL STREET AND OAK STREET INTERSECTION
NORTH SIDEWALK RAMP GRADES

POINT NO.	STATION	OFFSET	SIDE	ELEVATION	LOCATION
C0200	1713+25.37	31.75	LT	465.28	SW
C0201	1713+28.65	24.84	LT	465.13	SW
C0202	1713+28.53	20.27	LT	465.04	SW
C0203	1713+28.54	14.27	LT	464.54	SW
C0204	1713+34.55	12.58	LT	465.00	TOC
C0205	1713+28.55	12.70	LT	464.51	SW
C0206	1713+28.55	11.11	LT	464.49	CW
C0207	1713+21.55	12.57	LT	464.59	CW
C0208	1713+21.55	14.25	LT	464.61	SW
C0209	1713+21.53	20.25	LT	465.11	SW
C0210	1713+21.24	21.21	LT	465.13	SW
C0211	1713+16.62	16.57	LT	465.15	TOC
C0212	1713+04.69	21.50	LT	465.24	CW
C0213	1713+08.37	21.46	LT	465.07	CW
C0214	1713+10.49	21.47	LT	465.11	SW
C0215	1713+16.49	21.49	LT	465.22	SW
C0216	1713+04.88	28.52	LT	465.26	CW
C0217	1713+06.50	28.47	LT	465.22	SW
C0218	1713+10.47	28.47	LT	465.24	SW
C0219	1713+16.47	28.49	LT	465.36	SW
C0220	1713+16.46	31.72	LT	465.46	SW

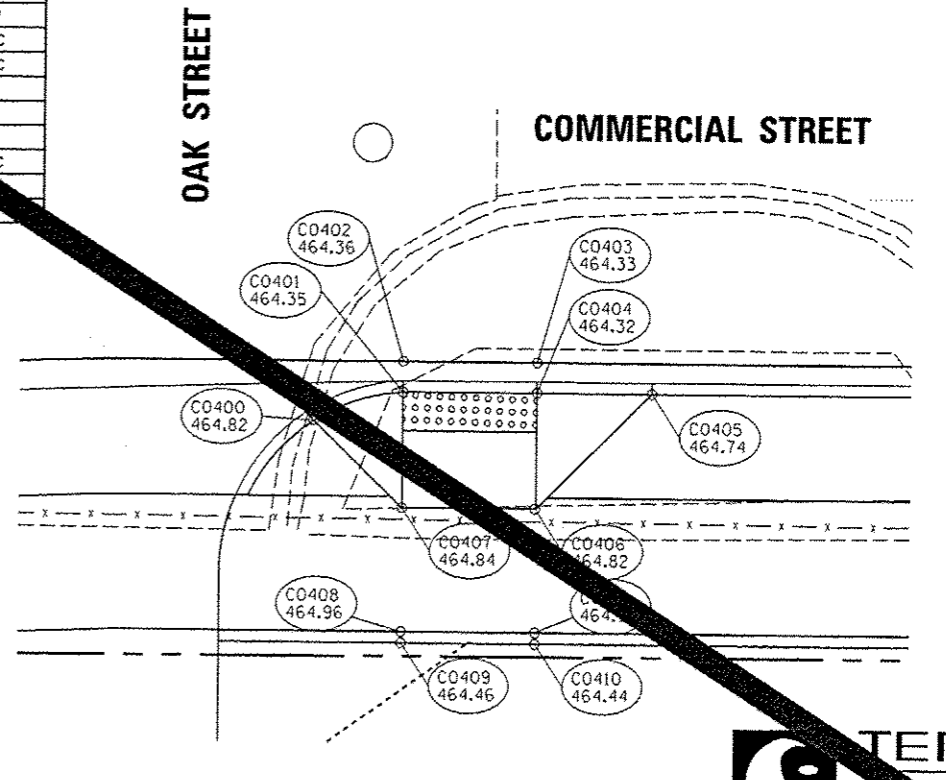
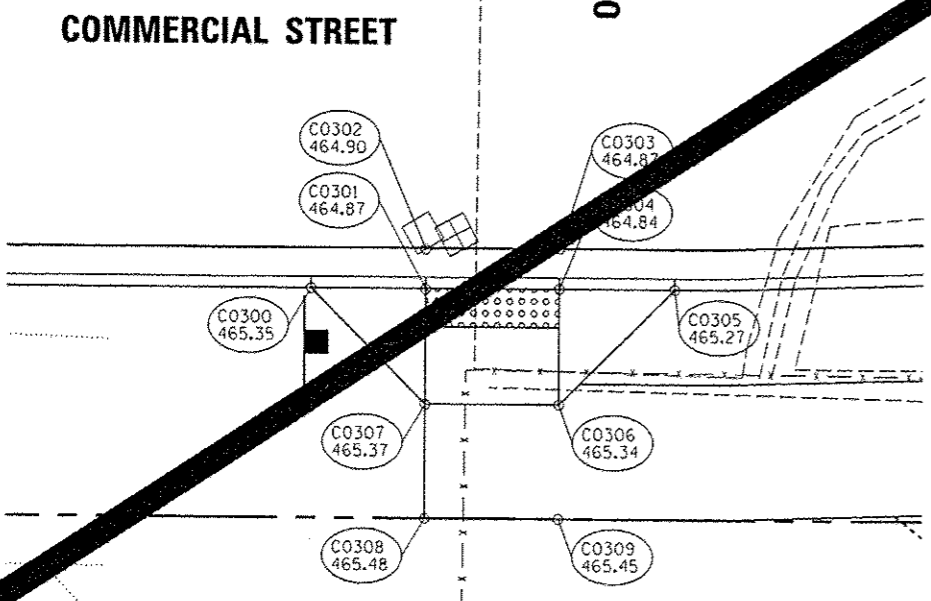


COMMERCIAL STREET AND OAK STREET INTERSECTION
SOUTH SIDEWALK RAMP GRADES

POINT NO.	STATION	OFFSET	SIDE	ELEVATION	LOCATION
C0300	1712+45.29	13.08	RT	465.35	TOC
C0301	1712+51.29	13.00	RT	464.87	TOC
C0302	1712+51.29	11.00	RT	464.90	TOC
C0303	1712+58.29	11.00	RT	464.87	CW
C0304	1712+58.29	13.08	RT	464.87	TOC
C0305	1712+64.29	13.08	RT	464.87	TOC
C0306	1712+58.29	19.08	RT	465.34	SW
C0307	1712+51.29	19.08	RT	465.37	SW
C0308	1712+51.29	25.00	RT	465.48	SW
C0309	1712+58.29	19.08	RT	465.45	SW

COMMERCIAL STREET AND OAK STREET INTERSECTION
EAST SIDEWALK RAMP GRADES

POINT NO.	STATION	OFFSET	SIDE	ELEVATION	LOCATION
C0400	1713+25.37	14.11	RT	464.82	TOC
C0401	1713+28.65	12.60	RT	464.35	TOC
C0402	1713+28.53	11.00	RT	464.36	CW
C0403	1713+28.55	11.00	RT	464.33	CW
C0404	1713+28.55	12.58	RT	464.32	TOC
C0405	1713+34.55	12.58	RT	464.74	TOC
C0406	1713+28.51	18.58	RT	464.82	SW
C0407	1713+21.55	18.58	RT	464.95	SW
C0408	1713+21.55	25.00	RT	464.95	SW
C0409	1713+21.55	25.58	RT	465.46	TOC
C0410	1713+28.55	25.58	RT	465.44	SW
C0411	1713+28.55	25.00	RT	464.94	SW



USER NAME = monsk01390	DESIGNED = JMP	REVISED =
DRAWN = JMP	CHECKED = MCH	REVISED =
DATE = 7/18/12		REVISED =

STATE OF ILLINOIS
DEPARTMENT OF TRANSPORTATION

COMMERCIAL STREET AND OAK STREET
SIDEWALK RAMP DETAIL

SCALE: 1"=5'

F.A.U. RTE.	SECTION	COUNTY	TOTAL SHEETS	SHEET NO.
	12-00356-01-PV	PEORIA	401	401
CONTRACT NO.			TIG-509305B	