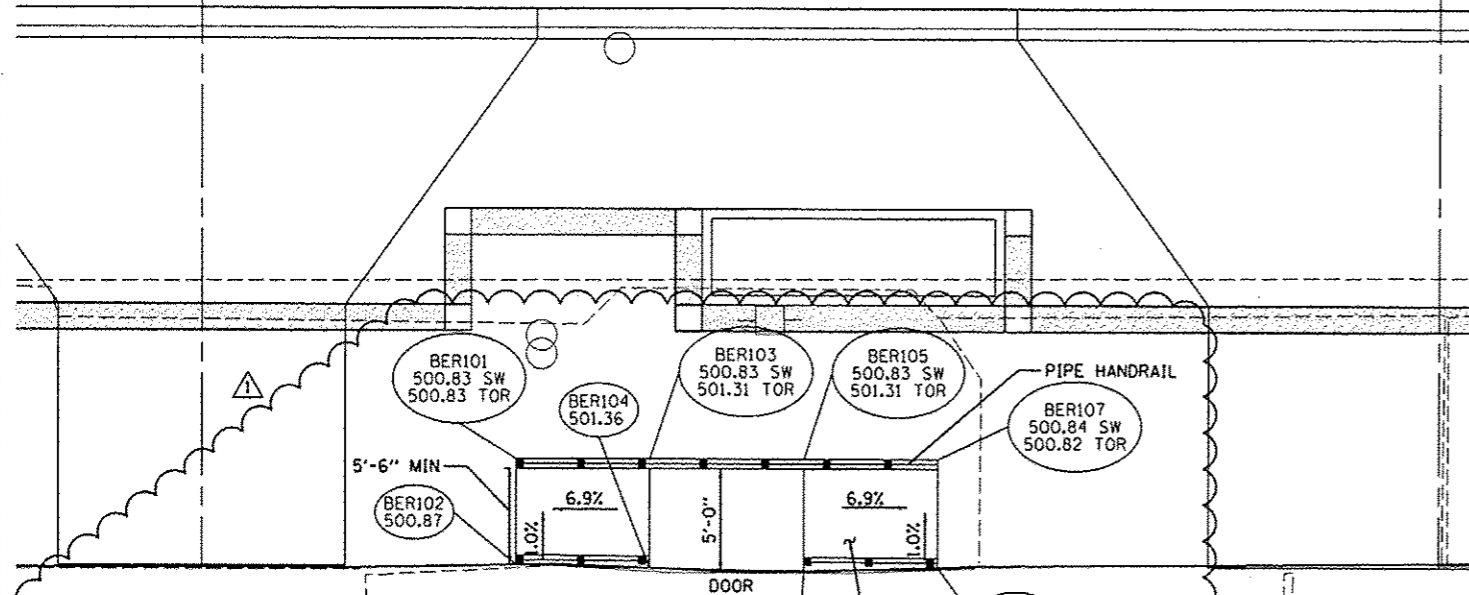


ADAMS STREET (STA. 147+00 TO STA. 147+25 RT.)



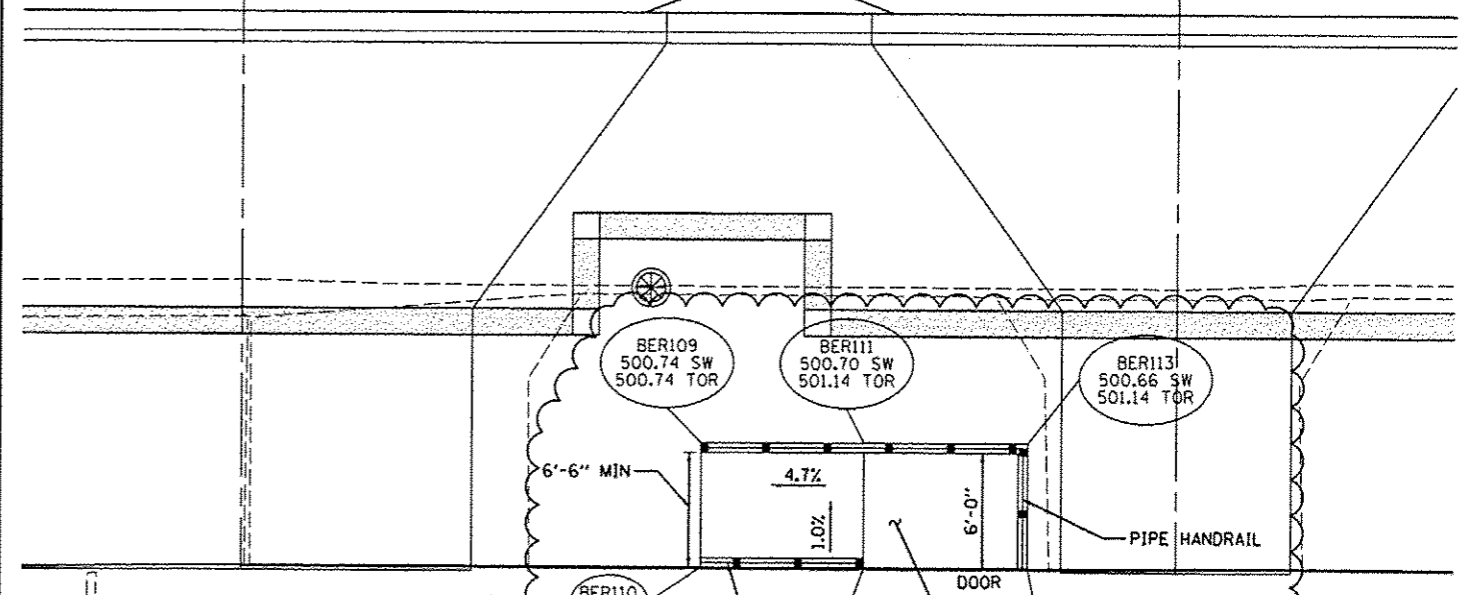
ADAMS STREET BUILDING ENTRANCE RAMP GRADES

POINT NO.	STATION	OFFSET	SIDE	ELEVATION	LOCATION	ELEVATION	LOCATION
BER101	147+03.17	34.44	RT	500.83	TOR	500.83	SW
BER102	147+03.17	39.94	RT	500.87	TOR		
BER103	147+10.17	34.44	RT	501.31	TOR	500.83	SW
BER104	147+10.17	40.11	RT	501.36	TOR		
BER105	147+18.17	34.44	RT	501.31	TOR	500.83	SW
BER106	147+18.17	40.25	RT	501.36	TOR		
BER107	147+25.17	34.44	RT	500.82	TOR	500.84	SW
BER108	147+25.17	40.06	RT	500.87	TOR		

SIDEWALK, SPECIAL
(SEE BUILDING ENTRANCE
RAMP CONSTRUCTION DETAILS)

TOR = TOP OF RAMP
SW = SIDEWALK

ADAMS STREET (STA. 147+80 TO STA. 147+92 RT.)



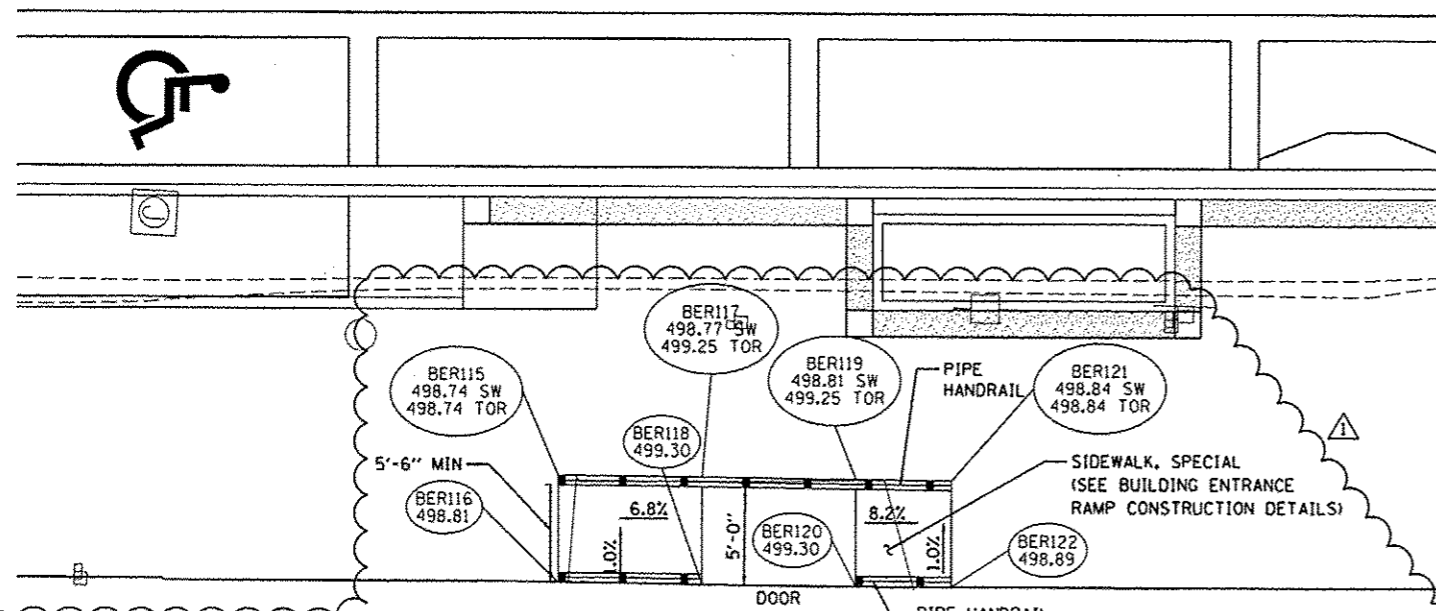
ADAMS STREET BUILDING ENTRANCE RAMP GRADES

POINT NO.	STATION	OFFSET	SIDE	ELEVATION	LOCATION	ELEVATION	LOCATION
BER109	147+75.15	33.32	RT	500.74	TOR	500.74	SW
BER110	147+75.15	39.83	RT	500.80	TOR		
BER111	147+83.65	33.32	RT	501.14	TOR	500.70	SW
BER112	147+83.65	39.85	RT	501.20	TOR		
BER113	147+92.15	33.32	RT	501.14	TOR	500.66	SW
BER114	147+92.15	39.82	RT	501.20	TOR		

SIDEWALK, SPECIAL
(SEE BUILDING ENTRANCE
RAMP CONSTRUCTION DETAILS)



ADAMS STREET (STA. 155+58 TO STA. 155+79 RT.)



ADAMS STREET BUILDING ENTRANCE RAMP GRADES

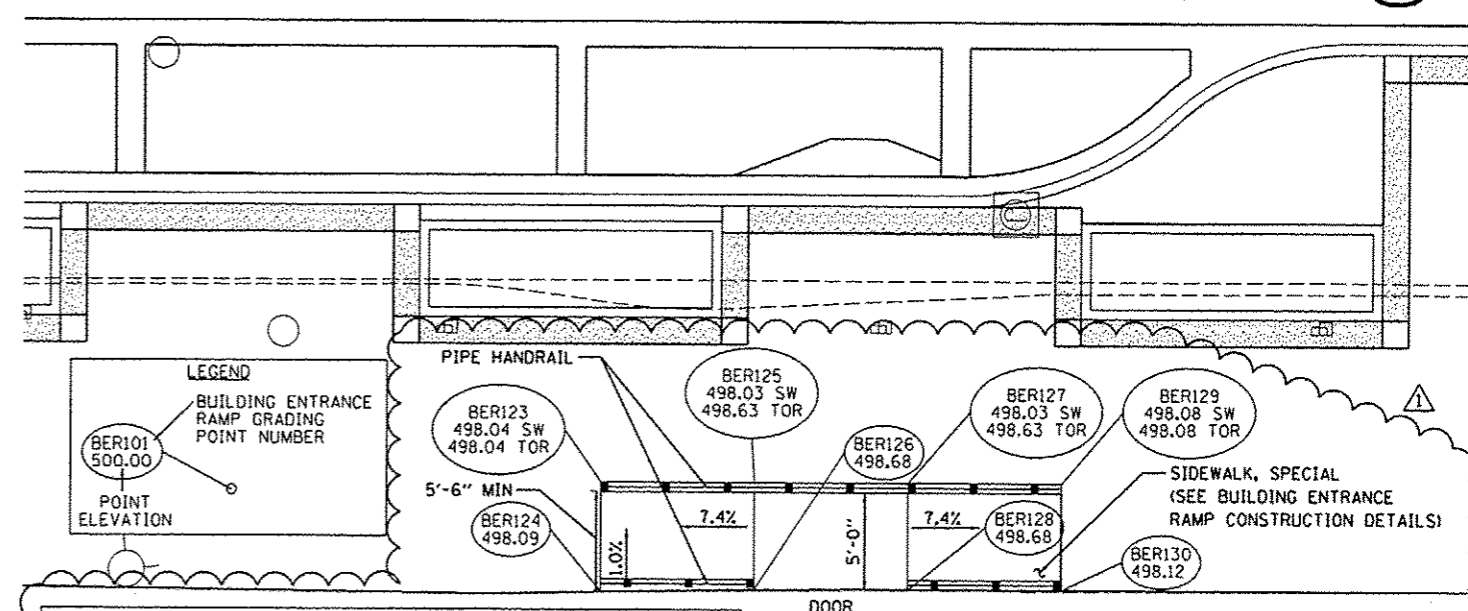
POINT NO.	STATION	OFFSET	SIDE	ELEVATION	LOCATION	ELEVATION	LOCATION
BER115	155+58.34	35.18	RT	498.74	TOR	498.74	SW
BER116	155+58.34	40.56	RT	498.81	TOR		
BER117	155+65.84	35.18	RT	499.25	TOR	498.77	SW
BER118	155+65.84	40.66	RT	499.30	TOR		

ADAMS STREET BUILDING ENTRANCE RAMP GRADES

POINT NO.	STATION	OFFSET	SIDE	ELEVATION	LOCATION	ELEVATION	LOCATION
BER119	155+73.84	35.18	RT	499.25	TOR	498.81	SW
BER120	155+73.84	40.72	RT	499.30	TOR		
BER121	155+78.84	35.18	RT	498.84	TOR	498.84	SW
BER122	155+78.84	40.73	RT	498.89	TOR		

SIDEWALK, SPECIAL
(SEE BUILDING ENTRANCE
RAMP CONSTRUCTION DETAILS)

ADAMS STREET (STA. 157+56 TO STA. 157+73 RT.)

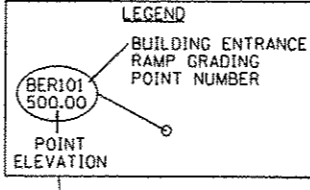


ADAMS STREET BUILDING ENTRANCE RAMP GRADES

POINT NO.	STATION	OFFSET	SIDE	ELEVATION	LOCATION	ELEVATION	LOCATION
BER123	157+56.75	34.96	RT	498.04	TOR	498.04	SW
BER124	157+56.75	40.62	RT	498.09	TOR		
BER125	157+64.75	34.96	RT	498.63	TOR	498.03	SW
BER126	157+64.75	40.46	RT	498.68	TOR		
BER127	157+72.75	34.96	RT	498.63	TOR	498.03	SW
BER128	157+72.75	40.46	RT	498.66	TOR		

ADAMS STREET BUILDING ENTRANCE RAMP GRADES

POINT NO.	STATION	OFFSET	SIDE	ELEVATION	LOCATION	ELEVATION	LOCATION
BER129	157+80.75	34.96	RT	498.08	TOR	498.08	SW
BER130	157+80.75	40.46	RT	498.12	TOR		



FILE NAME *	USER NAME * dms000079	DESIGNED - DLC	REVISED - 10/24/2012
PLT SCALE * 10.0000 / 1"	PLT DATE * 10/23/2012	DRAWN - RLA	REVISOR -
		CHECKED - KNB	REVISOR -
		DATE - 10/24/2012	REVISOR -

STATE OF ILLINOIS
DEPARTMENT OF TRANSPORTATION

ADAMS STREET
BUILDING ENTRANCE RAMP GRADING DETAILS

SCALE: 1"=5' SHEET NO. OF SHEETS STA. TO STA.

F.A.U. RTE.	SECTION	COUNTY	TOTAL SHEETS NO.
	12-00356-01-PV	PEORIA	519 407
CONTRACT NO. 89626			
ILLINOIS FED. AID PROJECT 116-509305(8)			