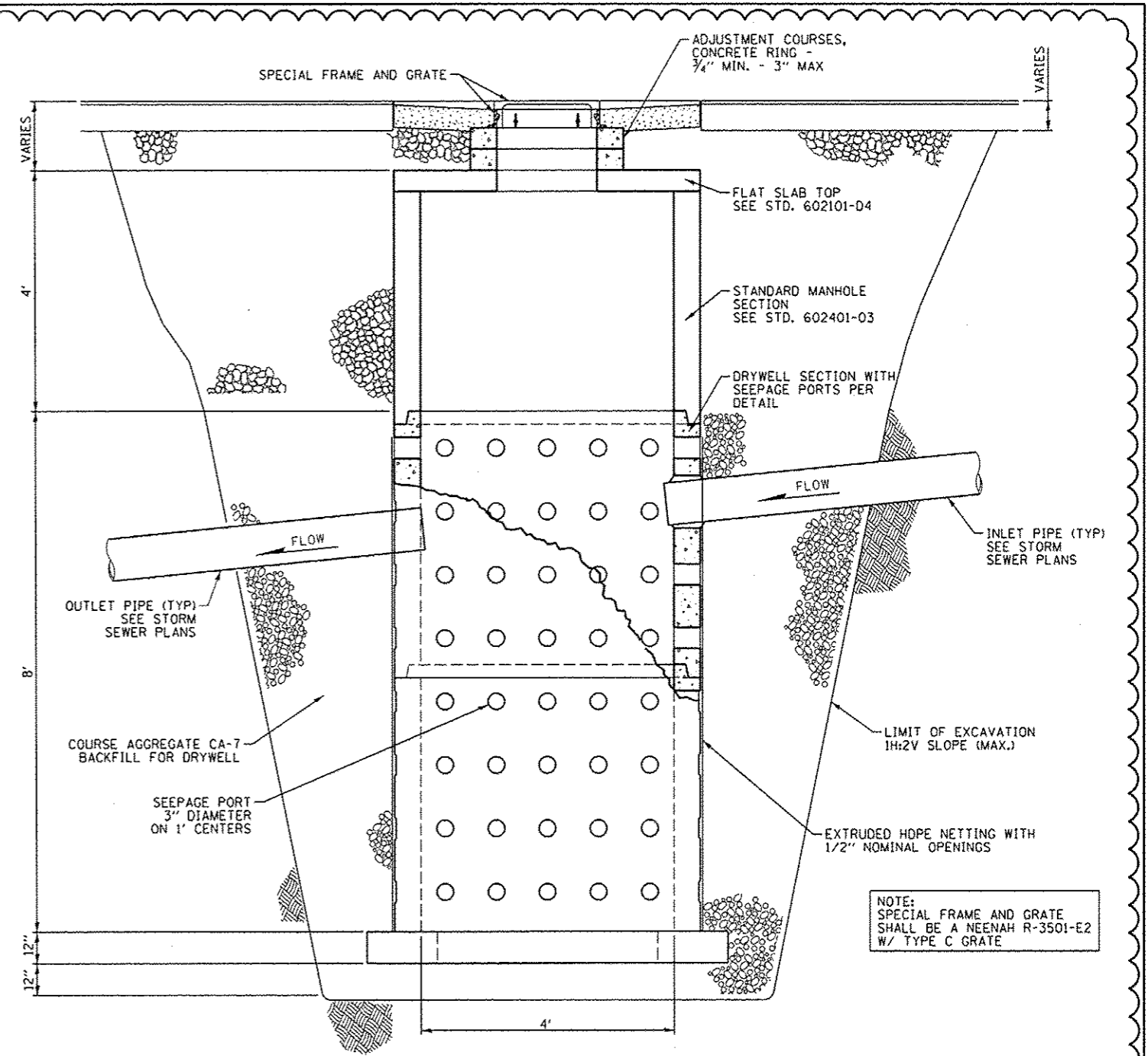
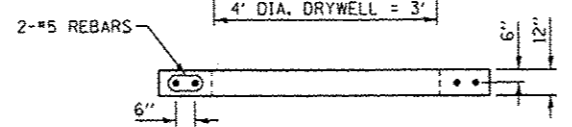
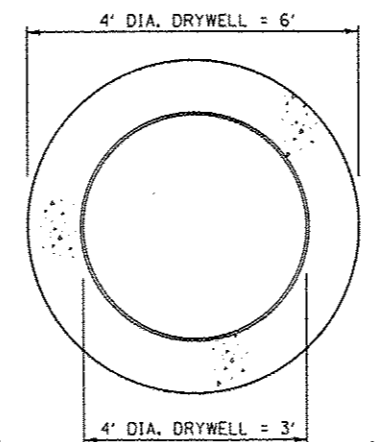


**DRYWELL, TYPE G-1, 4' DIAMETER**



**DRYWELL, SPECIAL FRAME AND GRATE, 4' DIAMETER**



**PRECAST FOOTING DETAIL**

NOTE:  
SPECIAL FRAME AND GRATE SHALL BE A NEENAH R-3501-E2 W/ TYPE C GRATE

NOTE:  
SEE STANDARD 602701 FOR DRYWELL STEP DETAILS.

FILE NAME: c:\pwwork\do-not-delete\dms73427\10155-wc-detailed-drywell.dgn	USER NAME: dawso0079	DESIGNED: RBL	REVISED: 10/24/12	<b>STATE OF ILLINOIS DEPARTMENT OF TRANSPORTATION</b>	<b>TIGER II - WAREHOUSE DISTRICT DRYWELL DETAILS</b>			F.A.U. R.T.C.	SECTION: 12-00356-01-PV	COUNTY: PEORIA	TOTAL SHEETS: 519	SHEET NO.: 411
PLOT SCALE: 10.0000 / in.	CHECKED: ROY	DATE: 10/24/2012	REVISIONS:		SCALE: N.T.S.	SHEET NO. OF SHEETS	STA. TO STA.	ILLINOIS FED. AID PROJECT TIG-50931501				
PLOT DATE: 10/23/2012	DATE: 10/24/2012	REVISIONS:										
CONTRACT NO. 89626												

**Farnsworth GROUP**  
7707 N. KNOXVILLE AVE., SUITE 100  
PEORIA, ILLINOIS 61614  
(309) 688-0289 / (309) 688-9820 Fax  
www.fsg.com