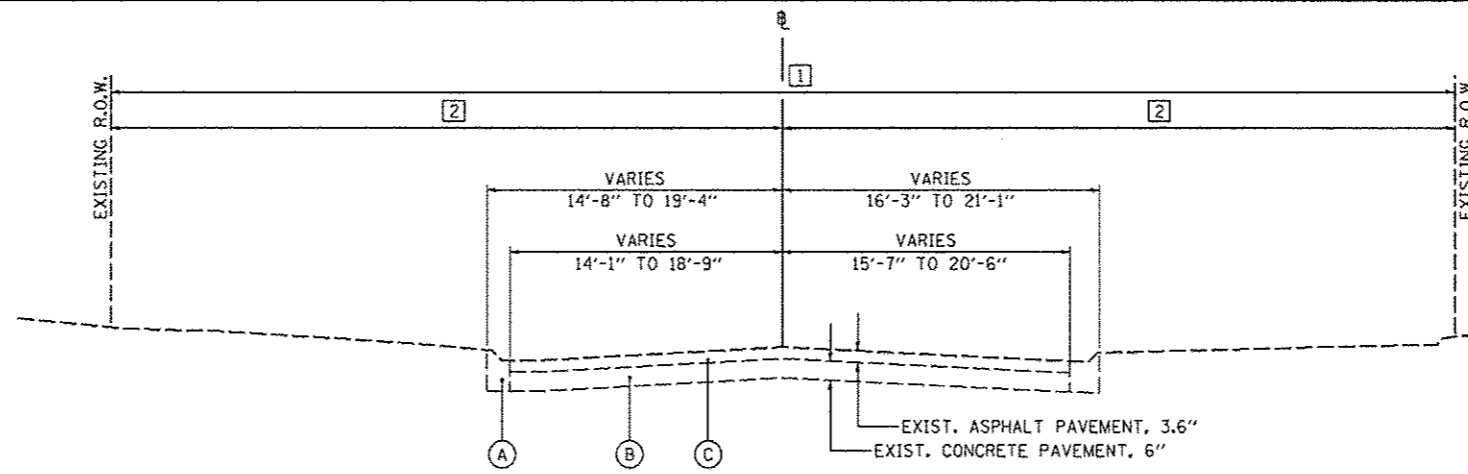


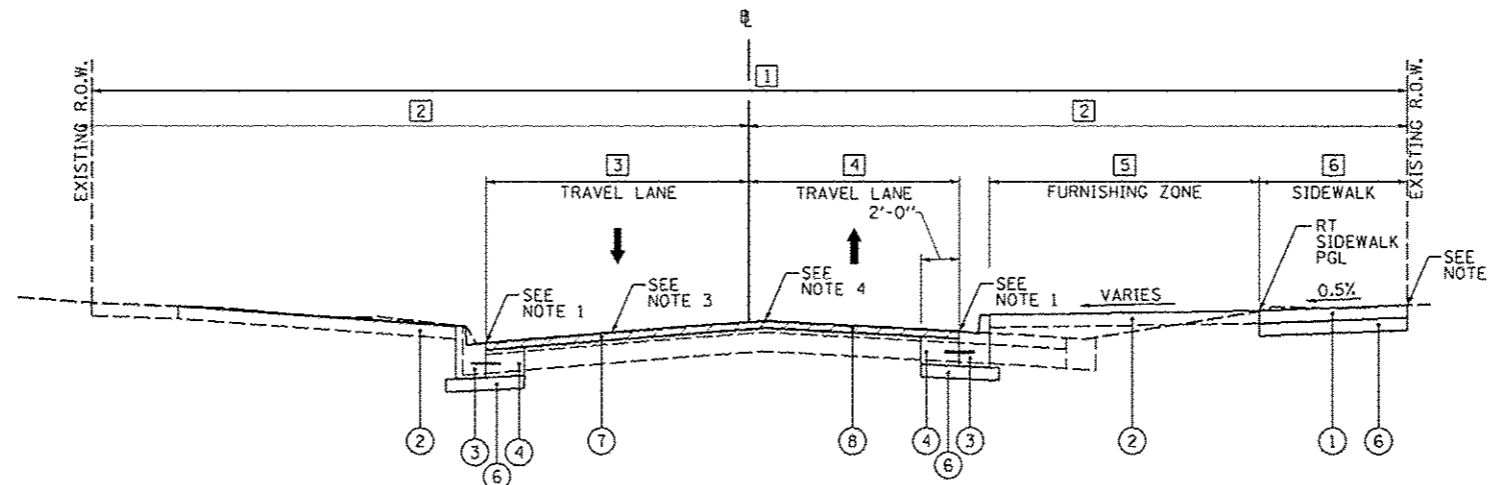
JEFFERSON AVENUE  
INTERSECTION OMISSION  
STA. 245+80.75 TO STA. 246+20.75

MEYER AVENUE  
INTERSECTION OMISSION  
STA. 248+02.63 TO STA. 248+18.91

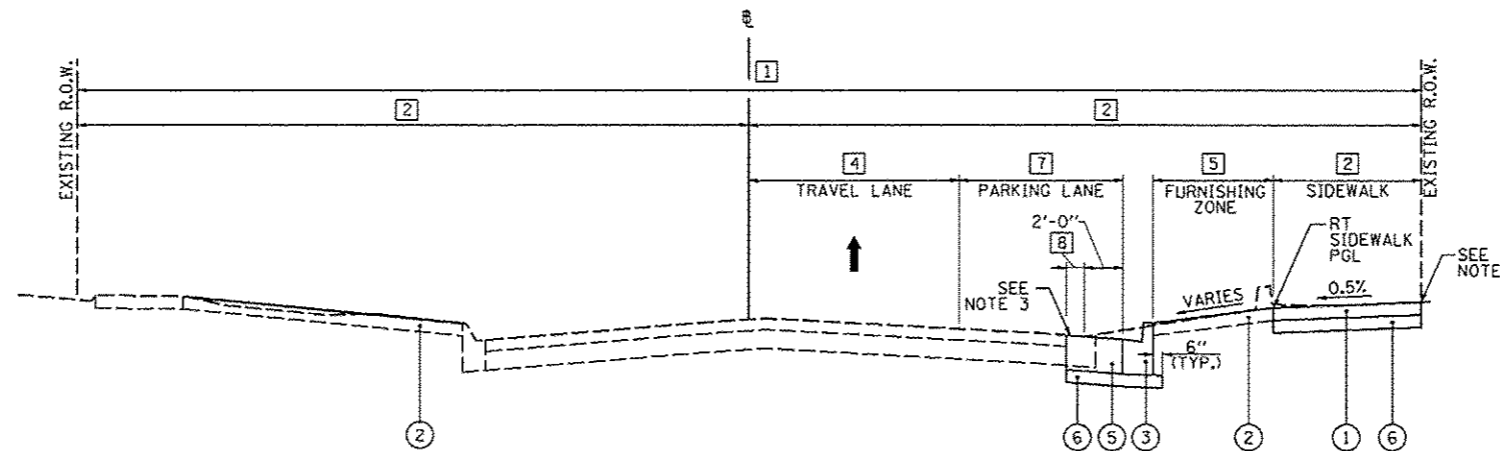
ADAMS STREET  
INTERSECTION OMISSION  
STA. 250+00.43 TO STA. 250+40.56



EXISTING MAPLE STREET  
STA. 246+20.75 TO STA. 250+00.43



PROPOSED MAPLE STREET - TYPICAL #1  
STA. 246+20.75 TO STA. 246+60.00  
STA. 249+55.00 TO STA. 250+00.43



PROPOSED MAPLE STREET - TYPICAL #2  
STA. 246+60.00 TO STA. 249+55.00

LEGEND

- (A) EXISTING COMBINATION CONCRETE CURB AND GUTTER
- (B) EXISTING ASPHALT PAVEMENT
- (C) EXISTING CONCRETE PAVEMENT
- (1) PROPOSED PORTLAND CEMENT CONCRETE SIDEWALK, 4"
- (2) PROPOSED TOPSOIL, FURNISH AND PLACE, 4" AND SODDING
- (3) PROPOSED COMBINATION CONCRETE CURB AND GUTTER, TYPE B-6.12
- (4) PROPOSED CLASS B PATCH, TYPE IV, 10"
- (5) PROPOSED CLASS B PATCH, TYPE IV, 12"
- (6) PROPOSED SUBGRADE GRANULAR MATERIAL, TYPE B, 4"
- (7) PROPOSED HOT-MIX ASPHALT SURFACE REMOVAL, VARIABLE DEPTH
- (8) PROPOSED POLYMERIZED HOT-MIX ASPHALT SURFACE COURSE, MIX "E", N50, 2 1/4" DEPTH

- (1) EXISTING R.O.W. WIDTH  
STA. 246+20.75 TO STA. 248+02.63 - 68'-6"  
STA. 248+18.91 TO STA. 250+00.43 - 70'-0"
- (2) EXISTING R.O.W. TO B WIDTH  
STA. 246+20.75 TO STA. 248+02.63 - 34'-3"  
STA. 248+18.91 TO STA. 250+00.43 - 35'-0"
- (3) TRAVEL LANE WIDTH - LEFT  
STA. 246+20.75 TO STA. 246+21.75 - TRANSITIONS FROM 11'-2" TO 11'-0"  
STA. 246+21.75 TO STA. 246+41.83 - TRANSITIONS FROM 11'-0" TO 13'-6"  
STA. 246+41.83 TO STA. 246+60.00 - 13'-6"
- (4) TRAVEL LANE WIDTH - RIGHT  
STA. 246+20.75 TO STA. 246+58.84 - TRANSITIONS FROM 14'-9" TO 11'-0"  
STA. 246+58.84 TO STA. 247+89.21 - 11'-0"  
STA. 247+89.21 TO STA. 248+02.63 - TRANSITIONS FROM 11'-0" TO 33'-10"  
STA. 248+18.91 TO STA. 248+32.55 - TRANSITIONS FROM 34'-11" TO 11'-0"  
STA. 248+32.55 TO STA. 248+94.36 - 11'-0"  
STA. 248+94.36 TO STA. 250+00.43 - TRANSITIONS FROM 11'-0" TO 11'-6"
- (5) FURNISHING ZONE WIDTH - RIGHT  
STA. 246+20.75 TO STA. 246+58.84 - TRANSITIONS FROM 10'-2" TO 13'-8"  
STA. 246+58.84 TO STA. 247+89.21 - TRANSITIONS FROM 13'-8" TO 13'-1"  
STA. 247+89.21 TO STA. 248+02.63 - TRANSITIONS FROM 13'-1" TO 0'-0"  
STA. 248+18.91 TO STA. 248+32.55 - TRANSITIONS FROM 0'-0" TO 14'-5"  
STA. 248+32.55 TO STA. 248+46.52 - 14'-5"  
STA. 248+46.52 TO STA. 248+67.44 - TRANSITIONS FROM 14'-5" TO 5'-11"  
STA. 248+67.44 TO STA. 249+53.44 - 5'-11"  
STA. 249+53.44 TO STA. 249+74.36 - TRANSITIONS FROM 5'-11" TO 14'-5"  
STA. 249+74.36 TO STA. 249+94.36 - 14'-5"  
STA. 249+94.36 TO STA. 250+00.43 - TRANSITIONS FROM 14'-5" TO 13'-10"
- (6) SIDEWALK WIDTH - RIGHT  
STA. 246+20.75 TO STA. 247+24.28 - TRANSITIONS FROM 7'-10" TO 8'-4"  
STA. 247+24.28 TO STA. 248+02.63 - TRANSITIONS FROM 8'-4" TO 8'-2"  
STA. 248+18.91 TO STA. 250+00.43 - 8'-0"
- (7) PARKING LANE WIDTH - RIGHT  
STA. 246+20.75 TO STA. 248+46.52 - 0'-0"  
STA. 248+46.52 TO STA. 248+67.44 - TRANSITIONS FROM 0'-0" TO 8'-6"  
STA. 248+67.44 TO STA. 249+53.44 - 8'-6"  
STA. 249+53.44 TO STA. 249+74.36 - TRANSITIONS FROM 8'-6" TO 0'-0"  
STA. 249+74.36 TO STA. 250+00.43 - 0'-0"
- (8) PAVEMENT WIDENING WIDTH - RIGHT  
STA. 246+20.75 TO STA. 248+60.00 - 0'-0"  
STA. 248+60.00 TO STA. 249+60.90 - 1'-6"  
STA. 249+60.90 TO STA. 250+00.43 - 0'-0"

- NOTES:
1. PROPOSED EDGE OF CURB TO MATCH EXISTING PAVEMENT ELEVATION
  2. PROPOSED BACK OF SIDEWALK TO MATCH EXISTING ELEVATION AT R.O.W.
  3. MATCH EXISTING PAVEMENT CROSS SLOPE
  4. PROPOSED CROWN TO MATCH LOCATION OF EXISTING CROWN

STATE OF ILLINOIS  
DEPARTMENT OF TRANSPORTATION

MAPLE STREET  
PROPOSED TYPICAL SECTIONS

CMT  
CRAWFORD, MURPHY & TILLY, INC.  
CONSULTING ENGINEERS  
License No. 184-000613

FILE NAME *	USER NAME * monak01390	DESIGNED - RMM/EMM	REVISED -	STATE OF ILLINOIS DEPARTMENT OF TRANSPORTATION	MAPLE STREET PROPOSED TYPICAL SECTIONS			F.A.U. RTE.	SECTION	COUNTY	TOTAL SHEETS	SHEET NO.	
al\p11111\work\do_no_t_delete\dms73320\044\BISG-shr-typicals-2B.dgn	PLT SCALE = 10.0000' / 1"	DRAWN - RJE	REVISED -		SCALE: N/A	SHEET NO.	OF SHEETS	STA.	TO STA.	12-00356-01-PV	PEORIA	519	17
	PLT DATE = 07/23/2012	CHECKED - E.JH	REVISED -										
		DATE - 7/18/12	REVISED -										