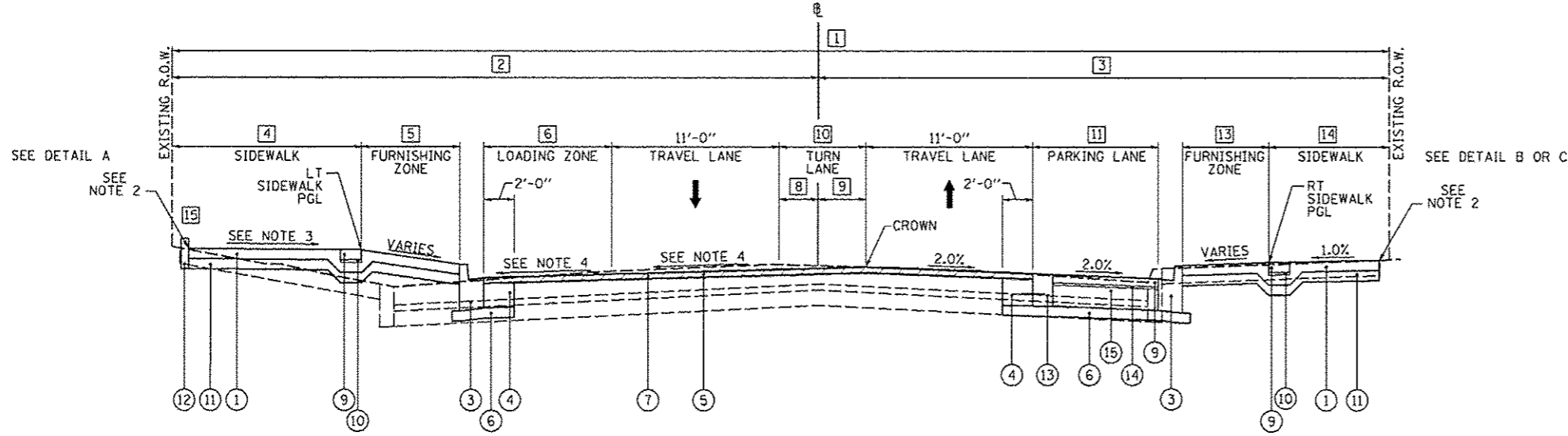
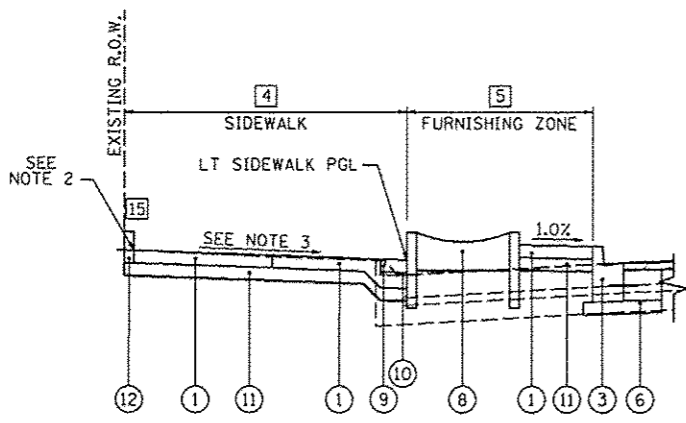


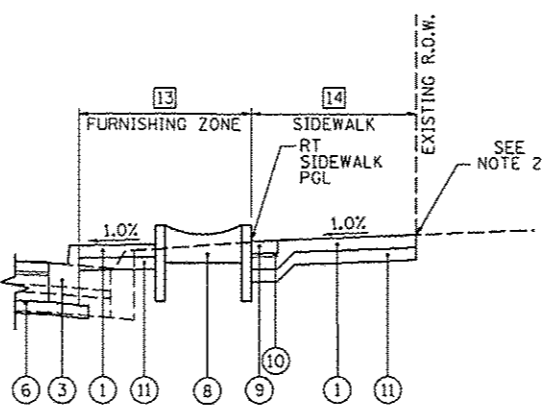
WASHINGTON STREET
INTERSECTION OMISSION
STA. 901+00.45 TO STA. 903+00.00



PROPOSED STATE STREET, TYPICAL #2
STA. 900+02.01 TO STA. 901+00.45



DETAIL A
PROPOSED SECTION WITH PLANTER BOX



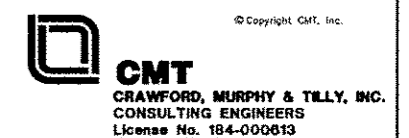
DETAIL B
PROPOSED SECTION WITH PLANTER BOX

- 1 EXISTING R.O.W. WIDTH
STA. 898+01.00 TO STA. 898+31.01 - TRANSITIONS FROM 109'-11" TO 80'-0"
STA. 898+31.01 TO STA. 901+00.45 - 80'-0"
- 2 EXISTING R.O.W. TO R WIDTH - LEFT
STA. 898+01.00 TO STA. 898+31.01 - TRANSITIONS FROM 72'-1" TO 42'-2"
STA. 898+31.01 TO STA. 901+00.45 - TRANSITIONS FROM 42'-2" TO 42'-6"
- 3 EXISTING R.O.W. TO R WIDTH - RIGHT
STA. 898+01.00 TO STA. 901+00.45 - TRANSITIONS FROM 37'-10" TO 37'-6"
- 4 SIDEWALK WIDTH - LEFT
STA. 900+02.01 TO STA. 900+30.15 - TRANSITIONS FROM 16'-9" TO 16'-10"
STA. 900+30.15 - TRANSITIONS FROM 16'-10" TO 11'-10"
STA. 900+30.15 TO STA. 900+90.00 - TRANSITIONS FROM 11'-10" TO 12'-0"
- 5 FURNISHING ZONE WIDTH - LEFT
STA. 900+02.01 TO STA. 900+15.83 - TRANSITIONS FROM 0'-0" TO 11'-4"
STA. 900+15.83 TO STA. 900+30.15 - TRANSITIONS FROM 11'-4" TO 3'-6"
STA. 900+30.15 - TRANSITIONS FROM 3'-6" TO 8'-6"
STA. 900+30.15 TO STA. 901+00.45 - TRANSITIONS FROM 8'-6" TO 3'-4"
- 6 LOADING ZONE WIDTH - LEFT
STA. 900+02.01 TO STA. 900+15.89 - 0'-0"
STA. 900+15.89 TO STA. 900+36.45 - TRANSITIONS FROM 0'-0" TO 8'-6"
STA. 900+36.45 TO STA. 901+00.45 - 8'-6"
- 7 PARKING LANE BUFFER WIDTH - LEFT
STA. 900+02.01 TO STA. 901+00.45 - 0'-0"
- 8 EDGE OF TRAVEL LANE TO R WIDTH - LEFT
STA. 900+02.01 TO STA. 901+00.45 - TRANSITIONS FROM 0'-8" TO 4'-11"
- 9 EDGE OF TRAVEL LANE TO R WIDTH - RIGHT
STA. 900+02.01 TO STA. 901+00.45 - TRANSITIONS FROM 5'-4" TO 5'-6"
- 10 TURN LANE WIDTH
STA. 900+02.01 TO STA. 900+02.85 - 0'-0"
STA. 900+02.85 TO STA. 900+05.82 - TRANSITIONS FROM 0'-0" TO 6'-0"
STA. 900+05.82 TO STA. 901+00.45 - TRANSITIONS FROM 6'-0" TO 10'-4"
- 11 PARKING LANE WIDTH - RIGHT
STA. 900+02.01 TO STA. 900+37.35 - 0'-0"
STA. 900+37.35 TO STA. 900+58.26 - TRANSITIONS FROM 0'-0" TO 8'-6"
STA. 900+58.26 TO STA. 901+00.45 - 8'-6"
- 12 PAVEMENT WIDENING WIDTH - RIGHT
STA. 900+02.01 TO STA. 900+53.50 - 0'-0"
STA. 900+53.50 TO STA. 900+58.26 - TRANSITIONS 0'-0" TO 3'-2"
STA. 900+58.26 TO STA. 901+00.45 - 3'-2"
- 13 FURNISHING ZONE WIDTH - RIGHT
STA. 900+02.01 TO STA. 900+11.23 - TRANSITIONS FROM 10'-6" TO 11'-8"
STA. 900+11.23 TO STA. 900+37.35 - 11'-8"
STA. 900+37.35 TO STA. 900+58.26 - TRANSITIONS FROM 11'-8" TO 3'-2"
STA. 900+58.26 TO STA. 901+00.45 - 3'-2"
- 14 SIDEWALK WIDTH - RIGHT
STA. 900+02.01 TO STA. 901+00.45 - TRANSITIONS FROM 7'-5" TO 7'-1"
- 15 CONCRETE CURB LOCATIONS
STA. 900+02.01 TO STA. 900+35.00, LT

- NOTES:
1. PROPOSED ELEVATION AT CROWN TO MATCH EXISTING PAVEMENT ELEVATION
 2. PROPOSED BACK OF SIDEWALK TO MATCH EXISTING ELEVATION AT R.O.W., EXCEPT:
STA. 900+07.82 TO STA. 900+35.00, LT - TRANSITIONS FROM ELEV. 485.67 TO 484.13
STA. 900+35.00 TO STA. 900+38.80, LT - TRANSITIONS FROM ELEV. 484.13 TO 483.86
 3. PROPOSED LEFT SIDEWALK SLOPE VARIES AS FOLLOWS:
STA. 900+02.01 TO STA. 901+00.45 - 0.5%
 4. PROPOSED LEFT TRAVEL LANE SLOPE VARIES AS FOLLOWS:
STA. 899+74.27 TO STA. 900+05.82 - TRANSITIONS FROM 1.0% TO 2.0%
STA. 900+05.82 TO STA. 901+00.45 - 2.0%

LEGEND

- | | |
|--|---|
| (A) EXISTING COMBINATION CONCRETE CURB AND GUTTER | (6) PROPOSED SUBBASE GRANULAR MATERIAL, TYPE A, 4" |
| (B) EXISTING CONCRETE PAVEMENT | (7) PROPOSED POLYMERIZED HOT-MIX ASPHALT SURFACE COURSE, MIX "E", N50, 2 1/4" DEPTH |
| (C) EXISTING BRICK PAVEMENT | (8) PROPOSED PLANTER BOX |
| (D) EXISTING ASPHALT PAVEMENT | (9) PROPOSED CONCRETE PAVERS |
| (1) PROPOSED PORTLAND CEMENT CONCRETE SIDEWALK, 4" | (10) PROPOSED CONCRETE PAVER SAND BEDDING, 1" |
| (2) PROPOSED TOPSOIL FURNISH AND PLACE, 4" AND SODDING | (11) PROPOSED SUBBASE GRANULAR MATERIAL, TYPE B, 4" |
| (3) PROPOSED COMBINATION CONCRETE CURB AND GUTTER, TYPE B-6.12 | (12) PROPOSED CONCRETE CURB, TYPE B |
| (4) PROPOSED CLASS B PATCH, TYPE IV, 10" | (13) PROPOSED GUTTER SPECIAL |
| (5) PROPOSED HOT-MIX ASPHALT SURFACE REMOVAL, VARIABLE DEPTH | (14) PROPOSED ASPHALT SETTING BED, 3/4" |
| | (15) PROPOSED PORTLAND CEMENT CONCRETE PAVEMENT, 7" (SPECIAL) |



FILE NAME * c:\pwise\work\do_not_delete\des73328\04	USER NAME * manak01398	DESIGNED - RMM/EMM	REVISED -	STATE OF ILLINOIS DEPARTMENT OF TRANSPORTATION	STATE STREET PROPOSED TYPICAL SECTIONS				F.A.U. RTE.	SECTION 12-00356-01-PV	COUNTY PEORIA	TOTAL SHEETS 519	SHEET NO. 21
PLOT SCALE * 1/8" = 1' / in.	CHECKED - E.JH	DATE - 7/18/12	REVISED -		SCALE: N/A	SHEET NO. OF SHEETS	STA.	TO STA.	CONTRACT NO. 89626				
PLOT DATE * 07/23/2012									[ILLINOIS] FED. AID PROJECT Y10-50931150				
									© Copyright CMT, Inc.				