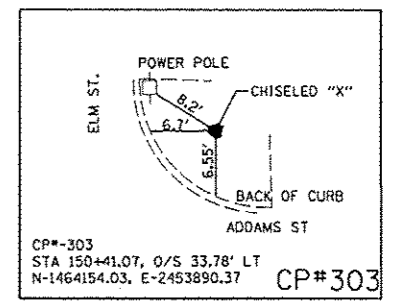
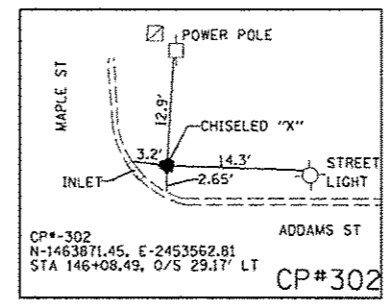
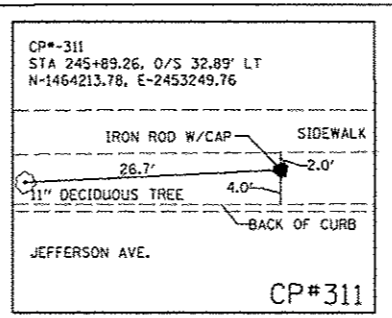
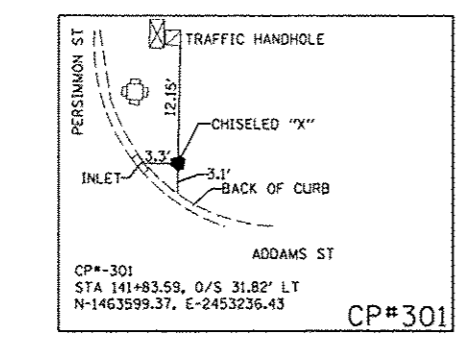
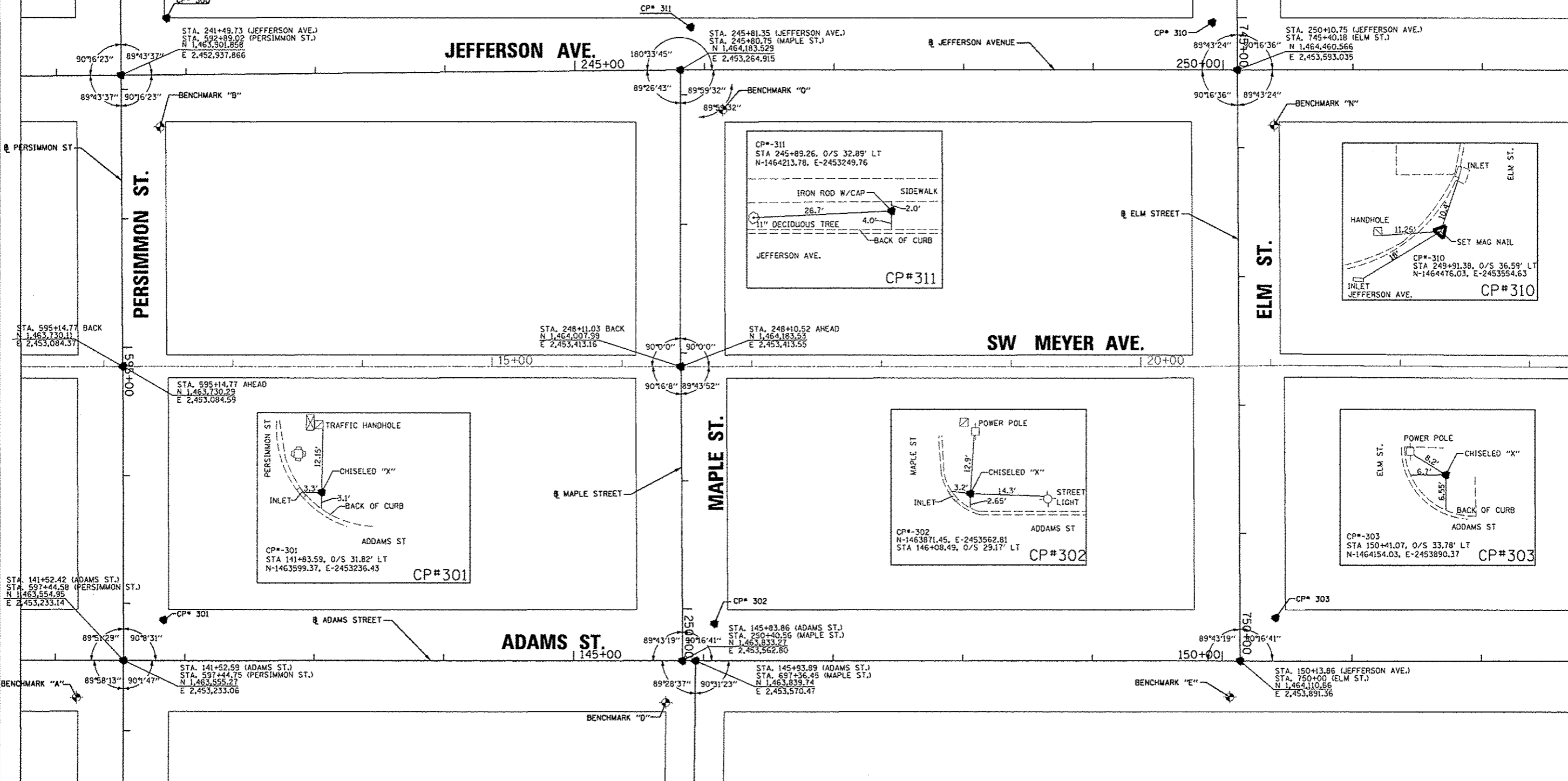
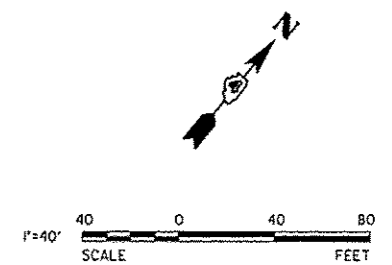


BENCHMARK	ELEVATION	DESCRIPTION
BM "A"	500.61'	NORTH CAP BOLT IN S.W. QUAD OF INTERSECTION OF ADAMS AND PERSIMMON
BM "B"	505.15'	NORTH CAP BOLT IN S.E. QUAD OF INTERSECTION OF JEFFERSON AND PERSIMMON
BM "D"	502.76'	NORTH CAP BOLT IN S.W. QUAD OF INTERSECTION OF MAPLE AND ADAMS
BM "E"	501.68'	NORTH CAP BOLT ON SOUTH SIDE OF ADAMS AT INTERSECTION WITH ELM
BM "N"	503.10'	NORTH CAP BOLT IN S.E. QUAD OF INTERSECTION OF ELM AND JEFFERSON
BM "O"	504.23'	NORTH CAP BOLT IN S.E. QUAD OF INTERSECTION OF MAPLE AND JEFFERSON



850 North Main Street, Morton, IL 61550
 309.321.8141 voice, 309.321.8142 fax
 www.mps-ll.com

MILLENNIA PROFESSIONAL SERVICES

FILE NAME =	USER NAME = manak01390	DESIGNED - DE	TVN/DJE	REVISED -
0:\p\iss\work\do_not_delete\dms\98379\104	010155-ahs-AT001.dgn	DRAWN - DE	DJE	REVISED -
		CHECKED - TVN	DASH	REVISED -
		PLOT DATE = 07/29/2012		DATE - 7/18/12
				REVISED -

STATE OF ILLINOIS
 DEPARTMENT OF TRANSPORTATION

TIGER II - WAREHOUSE DISTRICT			
ALIGNMENT, BENCHMARKS AND TIES			
SCALE: 1"=400'	SHEET NO.	OF SHEETS	STA. TO STA.

F.A.U. RTE.	SECTION	COUNTY	TOTAL SHEETS	SHEET NO.
12	12-00356-01-PV	PEORIA	519	40
ILLINOIS FED. AID PROJECT			TIG-50391501	

ATB-01