

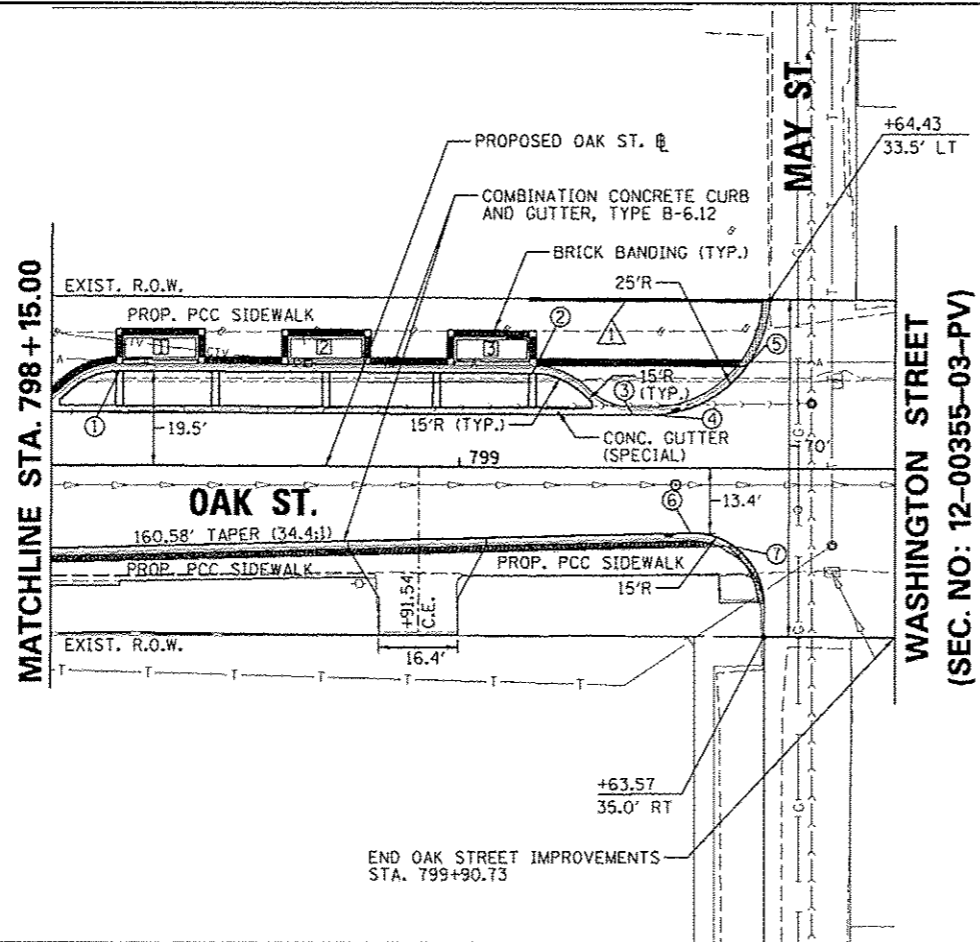
RADIUS POINTS

STATION	OFFSET	ELEV.
① 798+29.12	19.5' LT	495.01
② 799+15.12	19.5' LT	490.27
③ 799+36.04	11.0' LT	489.27
④ 799+39.55	11.0' LT	489.07
⑤ 799+59.65	21.1' LT	487.37
⑥ 799+48.17	13.42' LT	488.54
⑦ 799+57.19	16.1' RT	487.46

SEE ADAMS STREET PLAN SHEET

TOP OF PLANTER WALL ELEVATIONS

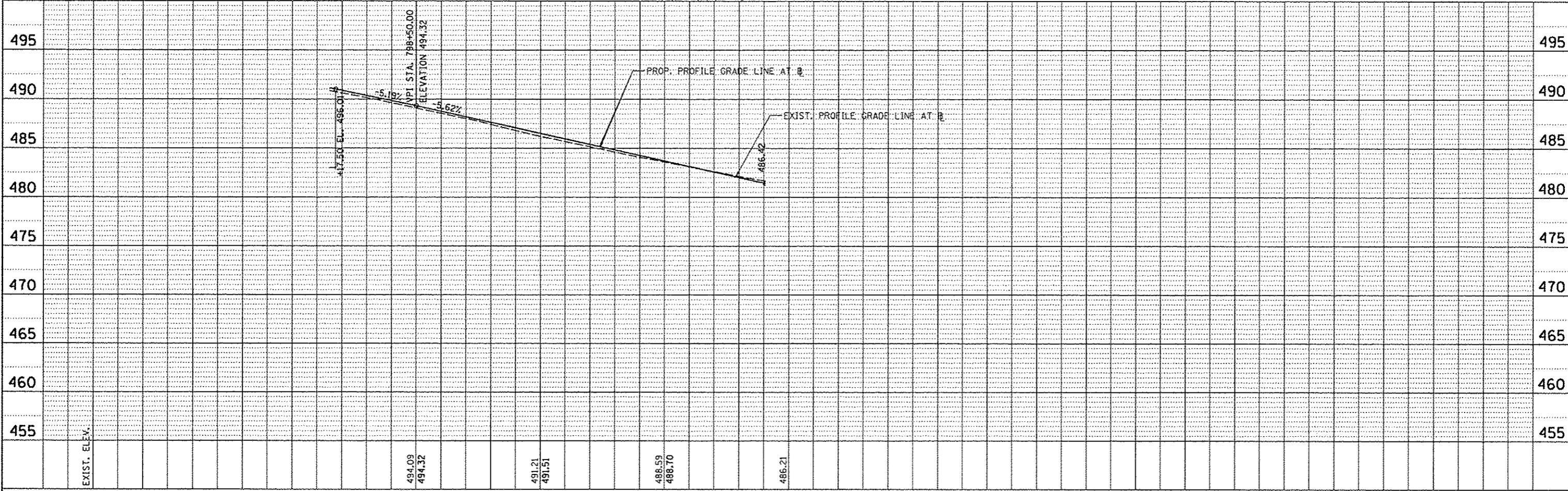
ELEV.
① 496.63
② 494.25
③ 492.11



KEYNOTES:

- ▲ PROPOSED CONCRETE CURB, TYPE B6
BEGIN STA: 799+14.49
35.0' LT TO BOC
END STA: 799+62.98
35.0' LT TO BOC

SEE STREETSCAPE PLANS FOR PROPOSED IMPROVEMENTS BEHIND CURB LINES



PLAN	DATE
BY	
CHECKED	
DATE	
NO.	
NO.	
NO.	
NO.	
NO.	

PROFILE	DATE
BY	
CHECKED	
DATE	
NO.	
NO.	
NO.	
NO.	
NO.	

FILE NAME *	USER NAME * menak01398	DESIGNED - RMM/EMM	REVISED -	<p align="center">STATE OF ILLINOIS DEPARTMENT OF TRANSPORTATION</p> <p align="center">OAK STREET PLAN AND PROFILE</p>	F.A.U. R.T.E.	SECTION	COUNTY	TOTAL SHEETS	SHEET NO.
or\pwise_work\do_not_delete\dms73328\0410\0155\ahs\pnp-007.dgn	PLOT SCALE = 3/32" = 1' / in.	DRAWN - RJE	REVISED -		12-00356-01-PV	PEORIA	519	79	
	PLOT DATE = 07/23/2012	CHECKED - EJJ	REVISED -		CONTRACT NO. 89626				
		DATE - 7/18/12	REVISED -		[ILLINOIS] FED. AID PROJECT 110-5093(50)				