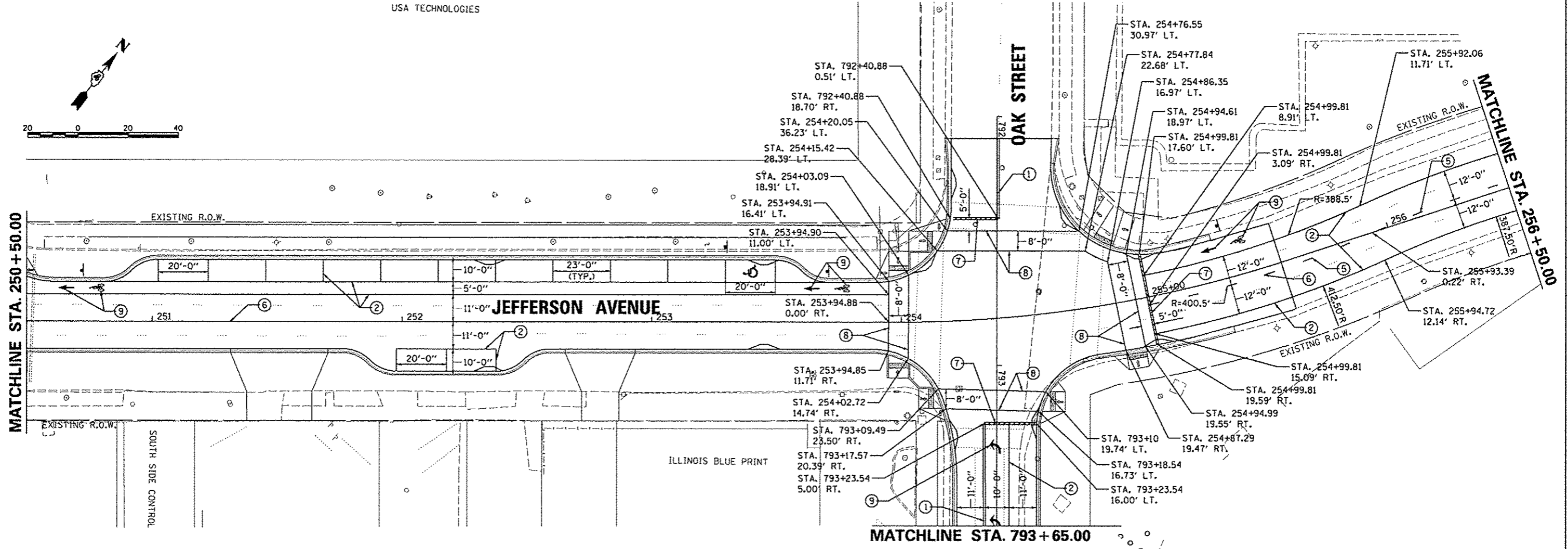
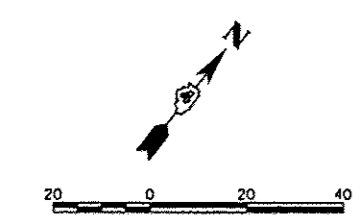


USA TECHNOLOGIES



- ① DOUBLE YELLOW THERMOPLASTIC PAVEMENT MARKING LINE - 4" SOLID, 4" GAP
- ② WHITE THERMOPLASTIC PAVEMENT MARKING LINE - 8" SOLID
- ③ WHITE THERMOPLASTIC PAVEMENT MARKING LINE - 12" (ON 45° ANGLE, 20' CTC)
- ④ WHITE THERMOPLASTIC PAVEMENT MARKING LINE - 8" (2' LONG, 6' GAP)
- ⑤ WHITE THERMOPLASTIC PAVEMENT MARKING LINE - 10' LONG, 30' GAP - 4"
- ⑥ WHITE PREFORMED PLASTIC PAVEMENT MARKING, TYPE B - INLAID - 10' LONG, 30' GAP - 4"
- ⑦ WHITE PREFORMED THERMOPLASTIC STOP BAR PAVEMENT MARKING LINE - 24" SOLID
- ⑧ WHITE PREFORMED THERMOPLASTIC PAVEMENT MARKING LINE - 8" SOLID
- ⑨ PREFORMED THERMOPLASTIC PAVEMENT MARKING, LETTERS (6' HEIGHT) AND SYMBOLS (FOR LEFT AND RIGHT TURN LANE ONE ARROW 20' FROM FRONT OF STORAGE AND ONE ARROW 20' AT BACK OF STORAGE)



FILE NAME *	USER NAME * monak01390	DESIGNED - MGD	REVISED -	<b>STATE OF ILLINOIS DEPARTMENT OF TRANSPORTATION</b>	<b>JEFFERSON AVENUE PAVEMENT MARKING PLANS</b>			F.A.J. RTE.	SECTION	COUNTY	TOTAL SHEETS	SHEET NO.
c:\pms\work\do_not_delete\dms73308\04	04_0155-shr\pkm008.dgn	DRAWN - RLA	REVISED -		SCALE: 1"=20'	SHEET NO. OF	SHEETS	STA. 250+50 TO STA. 256+00	12-00356-01-PV	PEORIA	519	93
	PLOT SCALE * 3/4"=1'-0"	CHECKED - KNB	REVISED -									
	PLOT DATE * 07/23/2012	DATE - 7/18/12	REVISED -									