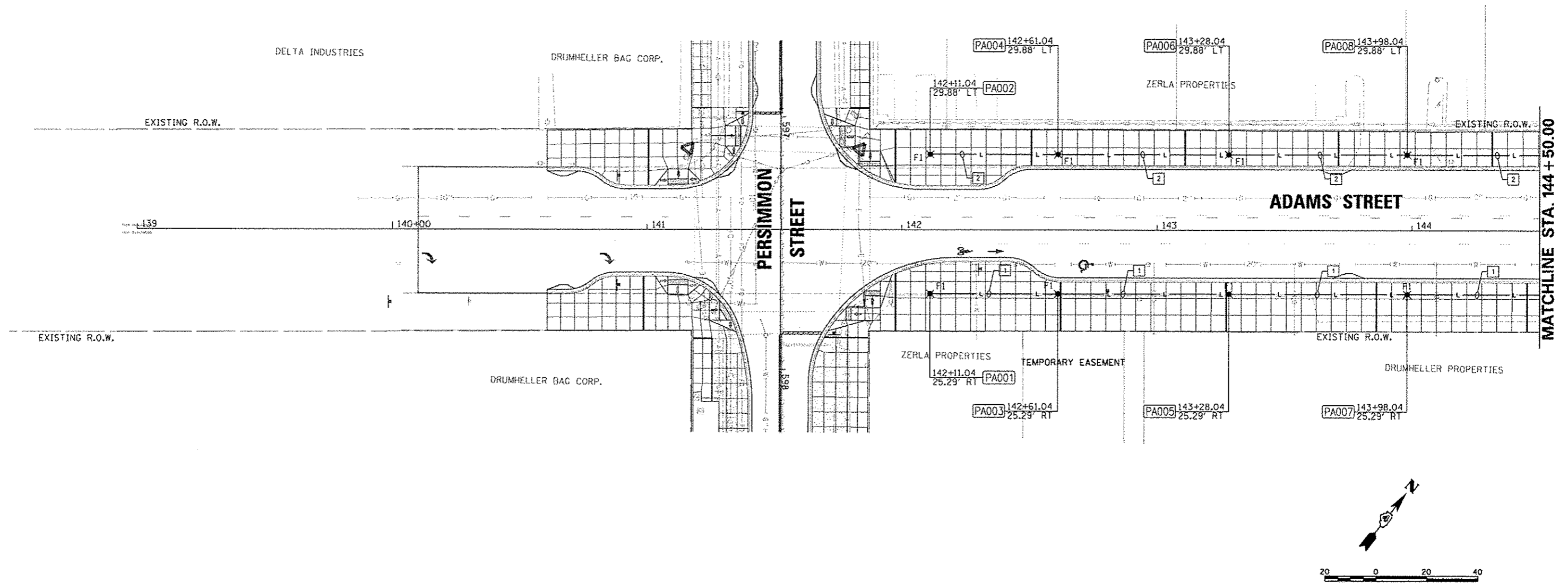


- NOTES:
1. STATIONS AND OFFSETS SHOWN ON THIS SHEET ARE TO THE CENTER OF HANDHOLE AND LIGHT POLE FOUNDATIONS.
 2. COORDINATE INSTALLATION OF UNDERGROUND CONDUIT AND LIGHT FIXTURES WITH ALL EXISTING UNDERGROUND SYSTEMS AND PROPOSED LANDSCAPE FEATURES AND PLANTINGS.
 3. SEE IRRIGATION PLANS FOR UNDERGROUND CONDUIT AND PIPING. COORDINATE INSTALLATION OF UNDERGROUND FACILITIES.
 4. 'F' DESIGNATIONS OF LIGHT FIXTURES SHOWN ON LIGHTING DETAILS SHEET.

ALL KEYED NOTES APPLY TO THIS SHEET ONLY.

- KEYED NOTES:
1. 2" CONDUIT, 2#6 AND 1#6 GND FOR CIRCUIT LC5-2.
 2. 2" CONDUIT, 2#6 AND 1#6 GND FOR CIRCUIT LC5-1.



FILE NAME =	USER NAME = mansk81398	DESIGNED -	REVISED -	STATE OF ILLINOIS DEPARTMENT OF TRANSPORTATION	ADAMS STREET LIGHTING PLAN	F.A.U. RTE.	SECTION	COUNTY	TOTAL SHEETS	SHEET NO.
o:\pwise_work\do_not_delete\dms73318\041	LB0155-ehs-light1828.dgn	DRAWN -	REVISED -			12-00356-01-PV	PEORIA	519	354	
	PLOT SCALE = 3/16" = 1' / in.	CHECKED -	REVISED -			CONTRACT NO. 89626				
	PLOT DATE = 07/23/2012	DATE = 7/18/12	REVISED -			ILLINOIS FED. AID PROJECT TIG-50931581				
					SCALE: 1"=20'	SHEET NO. OF SHEETS		STA. 140+65.00 TO STA. 144+50.00		