

CODE NO.	ITEM	UNIT	TOTAL QUANTITY	CONSTRUCTION CODE			
				NHPP FUNDS			
				80% FED 20% STATE	80% FED 20% STATE	80% FED 20% STATE	80% FED 20% STATE
				ROADWAY	STRUCTURE	ROADWAY	STRUCTURE
0004	0004	0004	0004				
IL RTE. 22	IL RTE. 22	IL RTE. 59	IL RTE. 59				
X7010216	TRAFFIC CONTROL AND PROTECTION, (SPECIAL)	L SUM	1	1			
X7015005	CHANGEABLE MESSAGE SIGN	CAL DA	84	56		28	
X7030005	TEMPORARY PAVEMENT MARKING REMOVAL	SQ FT	3213	3213			
X7830050	RAISED REFLECTIVE PAVEMENT MARKER, REFLECTOR REMOVAL	EACH	52	52			
Z0013798	CONSTRUCTION LAYOUT	L SUM	1	0.5		0.5	
Z0030850	TEMPORARY INFORMATION SIGNING	SQ FT	102.8	51.4		51.4	
Z0073510	TEMPORARY TRAFFIC SIGNAL TIMING	EACH	1	1			

1



* = SPECIALTY ITEMS

REV. 10-23-2018

MODEL: Default
FILE NAME: U:\4411\share\prj\DOT16598\181_0061\Work Order #6 11-9-22 @ Ditcher\CADD_Sheets\16598-shr-5007.dgn



USER NAME = dwozniarski	DESIGNED - JKP	REVISED -
PLOT SCALE = 40.0000 ' / in.	DRAWN - DMW	REVISED -
PLOT DATE = 8/17/2018	CHECKED - SPF	REVISED -
	DATE - 07-13-2018	REVISED -

STATE OF ILLINOIS
DEPARTMENT OF TRANSPORTATION

IL 59 OVER DITCH AND IL 22 OVER CHUNGS CREEK/HONEY LAKE DRAIN
SUMMARY OF QUANTITIES

SCALE: N/A SHEET 7 OF 7 SHEETS STA. TO STA.

F.A.P. RTE.	SECTION	COUNTY	TOTAL SHEETS	SHEET NO.
338	2016-051B	LAKE	55	9
ILLINOIS FED. AID PROJECT			CONTRACT NO. 62D35	

REV. - MS

SUGGESTED SEQUENCE OF CONSTRUCTION & MAINTENANCE OF TRAFFIC

STAGE I

1. INSTALL TEMPORARY TRAFFIC SIGNAL, INSTALL ADVANCED WIDTH RESTRICTION SIGNAGE, AND INSTALL STAGE I TRAFFIC CONTROL ALONG IL ROUTE 22, SHIFT TRAFFIC NORTH TO STAGE I TRAFFIC LANE.
2. REMOVE HEADWALL, INSTALL PERMANENT SHEET PILING WALL, AND SOLDIER PILE WALL ON SOUTH SIDE.
3. COMPLETE SOUTH SHOULDERS AND GUARDRAIL INSTALLATION.

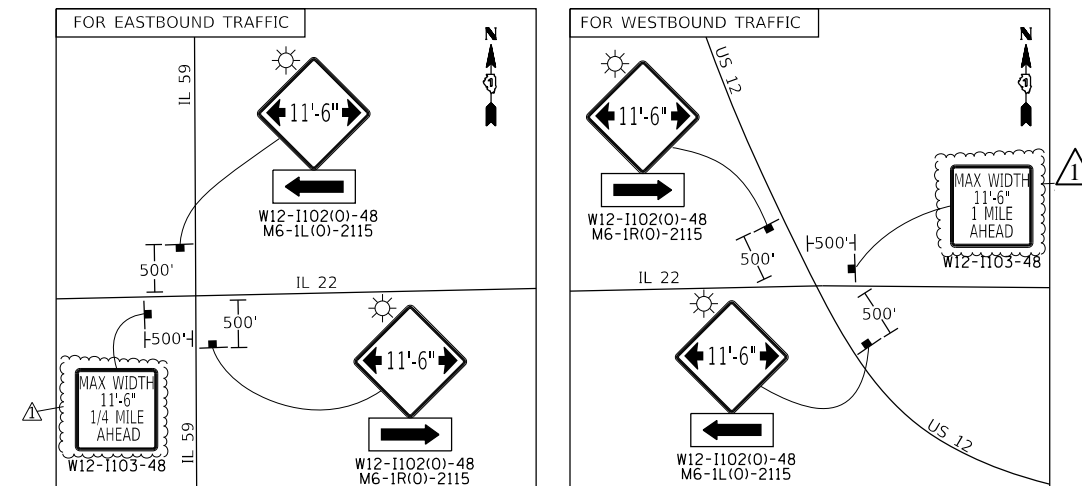
STAGE II

1. RELOCATE STAGE I TRAFFIC CONTROL ON IL ROUTE 22 TO STAGE II LOCATION. SHIFT TRAFFIC SOUTH TO STAGE II TRAFFIC LANE.
2. REMOVE HEADWALL, INSTALL PERMANENT SHEET PILING WALL, AND SOLDIER PILE WALL ON NORTH SIDE.
3. COMPLETE NORTH SIDE SHOULDERS AND GUARDRAIL INSTALLATION.
4. REMOVE STAGE II TRAFFIC CONTROL DEVICES. SHIFT TRAFFIC BACK TO NORMAL LANES ALONG ROUTE 22.
5. COMPLETE PERMANENT PAVEMENT MARKING ALONG IL ROUTE 22 UTILIZING DAYTIME LANE CLOSURES.

MAINTENANCE OF TRAFFIC GENERAL NOTES:

1. THE TRAFFIC CONTROL DEPICTED HEREIN IS THE MINIMUM REQUIREMENT. ADDITIONAL TRAFFIC CONTROL DEVICES AS SPECIFIED IN THE HIGHWAY STANDARDS AS SHOWN IN THE INDEX OF SHEETS AND THE SPECIAL PROVISIONS SHALL BE PLACED BY THE CONTRACTOR TO THE SATISFACTION OF THE ENGINEER. ALL TRAFFIC CONTROL DEVICES SHALL BE CONSIDERED INCLUDED IN THE COST OF TRAFFIC CONTROL AND PROTECTION, (SPECIAL) UNLESS OTHERWISE INDICATED WITHIN THESE GENERAL NOTES, PLANS OR SPECIAL PROVISIONS.
2. MAINTENANCE OF TRAFFIC WIDTH RESTRICTION REQUIREMENT - THE CONTRACTOR SHALL NOTIFY THE DISTRICT ONE TRAFFIC CONTROL SUPERVISOR, IN WRITING, WHEN THE CONTRACTOR RECEIVES AN AWARD LETTER FOR THE CONTRACT. THE LETTER SHALL STATE THE ANTICIPATED START DATE OF LANE WIDTH RESTRICTIONS. THE TWENTY-ONE (21) DAY NOTICE WILL START FROM THE AWARD DATE. NO WIDTH RESTRICTIONS WILL BE ALLOWED UNTIL TWENTY-ONE (21) DAYS AFTER RECEIVING NOTICE FROM THE CONTRACTOR. THE CONTRACTOR MAY ELECT TO PROVIDE THE ANTICIPATED START DATE OF LANE WIDTH RESTRICTIONS AT PRECONSTRUCTION MEETING AS LONG AS THERE IS A MINIMUM OF TWENTY-ONE (21) DAYS ADVANCED NOTICE.
3. THE CONTRACTOR SHALL FURNISH, INSTALL, MAINTAIN AND REMOVE ALL SIGNS AND SIGN SUPPORTS REQUIRED FOR MAINTENANCE OF TRAFFIC.
4. THE CONTRACTOR SHALL BE RESPONSIBLE FOR PROVIDING LABOR, SIGNS AND TRAFFIC CONTROL DEVICES NECESSARY FOR THE MAINTENANCE OF TRAFFIC UNLESS NOTED OTHERWISE IN THE SPECIAL PROVISIONS.
5. THE CONTRACTOR SHALL CONTACT THE DISTRICT ONE TRAFFIC CONTROL SUPERVISOR AT (847) 705-4470 A MINIMUM OF 72 HOURS IN ADVANCE OF BEGINNING THE WORK.
6. IN ADVANCE OF ALL STAGE CHANGES ON IL ROUTE 22, THE CONTRACTOR SHALL PLACE ONE (1) PORTABLE CHANGEABLE MESSAGE SIGN AT EACH END OF THE PROJECT ALONG IL ROUTE 22 AS DIRECTED AT A LOCATION DESIGNATED BY THE ENGINEER TO INFORM MOTORISTS OF THE UPCOMING STAGE CHANGE ON IL ROUTE 22. THE MESSAGE SHALL BE APPROVED BY THE ENGINEER.
7. DRUMS OR TYPE II BARRICADES EQUIPPED WITH BI-DIRECTIONAL STEADY BURN LIGHT SHALL BE PROVIDED AS SHOWN IN THE PLANS AND AS DIRECTED BY THE ENGINEER.
8. ALL "ROAD CONSTRUCTION AHEAD" SIGNS AND TYPE II BARRICADES SHALL BE EQUIPPED WITH MONO-DIRECTIONAL TYPE A AMBER FLASHING LIGHTS.
9. ALL EXISTING SIGNS THAT CONFLICT WITH THE TRAFFIC CONTROL PLAN SHALL BE COVERED OR REMOVED IN ACCORDANCE WITH ARTICLE 107.25 OF THE STANDARD SPECIFICATIONS.
10. THE CONTRACTOR SHALL BE REQUIRED TO REMOVE ALL EXISTING PAVEMENT MARKINGS WHICH CONFLICT WITH THE DESIGNATED TRAFFIC CONTROL PLAN.
11. THE CONTRACTOR SHALL BE REQUIRED TO MAINTAIN TRAFFIC IN ACCORDANCE WITH THE MAINTENANCE OF TRAFFIC PLANS, SPECIAL PROVISIONS, APPLICABLE STATE STANDARDS, AND AS DIRECTED BY THE ENGINEER. ANY CHANGES TO THE MAINTENANCE OF TRAFFIC SHALL BE SUBMITTED TO THE ENGINEER FOR APPROVAL PRIOR TO IMPLEMENTING ANY CHANGES.
12. TRAFFIC CONDITIONS, ACCIDENTS, AND OTHER UNFORESEEN EMERGENCY CONDITIONS MAY REQUIRE THE ENGINEER TO RESTRICT, MODIFY OR REMOVE LANE CLOSURES OR CHANNELIZATION SHOWN IN THE PLANS. THE CONTRACTOR SHALL PROMPTLY RESPOND AT THE TIME OF NOTIFICATION BY THE ENGINEER FOR THE MAINTENANCE OF TRAFFIC CONTROL DEVICES.
13. THE ENGINEER SHALL BE INFORMED A MINIMUM OF 48 HOURS IN ADVANCE OF ANY PROPOSED CHANGE TO THE SUGGESTED STAGES OF CONSTRUCTION AND TRAFFIC CONTROL PLAN.
14. ALL TEMPORARY PAVEMENT MARKINGS SHOWING DETERIORATION AFTER SEVEN (7) DAYS OF SERVICE SHALL BE REPLACED BY THE CONTRACTOR AS DIRECTED BY THE ENGINEER. ALL MARKINGS THAT REQUIRE REPLACEMENT PRIOR TO SEVEN (7) DAYS OF SERVICE SHALL BE REPLACED BY THE CONTRACTOR AT HIS EXPENSE.
15. WHEN THEY ARE NO LONGER NECESSARY, ALL TRAFFIC CONTROL DEVICES SHALL IMMEDIATELY BE REMOVED, COVERED OR TURNED AWAY FROM TRAFFIC. WHEN A SIGN IS COVERED, ITS POST SHALL HAVE A REFLECTIVE 3" X 6" DELINEATOR INSTALLED. THE COST OF THE DELINEATOR IS INCLUDED IN THE COST OF TRAFFIC CONTROL AND PROTECTION, (SPECIAL).
16. TEMPORARY CONCRETE BARRIERS AND TEMPORARY IMPACT ATTENUATORS SHALL BE PLACED AS SHOWN IN THE PLANS. FURNISHING, INSTALLING AND RELOCATING TEMPORARY CONCRETE BARRIER AND TEMPORARY IMPACT ATTENUATORS SHALL BE IN ACCORDANCE WITH IDOT SPECIAL PROVISIONS, IDOT HIGHWAY STANDARDS, STANDARD SPECIFICATIONS, AND AS DIRECTED BY THE ENGINEER.
17. IMMEDIATELY AFTER THE COMPLETION OF CONSTRUCTION, THE CONTRACTOR SHALL RESTORE ALL PERMANENT PAVEMENT MARKINGS, SIGNS, AND OTHER TRAFFIC CONTROL DEVICES THAT WERE COVERED, REMOVED, DAMAGED OR OTHERWISE AFFECTED BY CONSTRUCTION.

ADVANCED SIGNAGE FOR IL 22



REV. 10-23-2018

MODEL: Default
 FILE NAME: U:\41\15\share\prj\DOT\6598.rtb_181_006\Work_Order_# 6_IL59.22 @ District\CADD_Sheets\162035-shc-mot\Typical_Addendum.dgn

CHASTAIN & ASSOCIATES LLC
 CONSULTING ENGINEERS
 184-001397

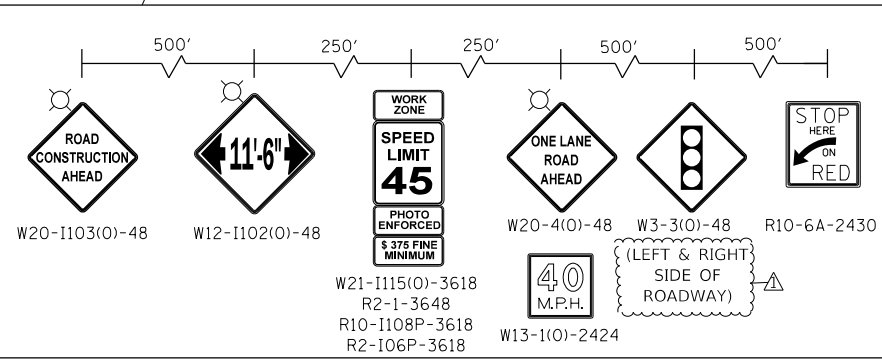
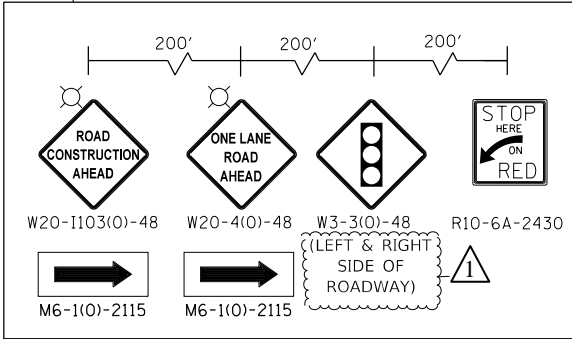
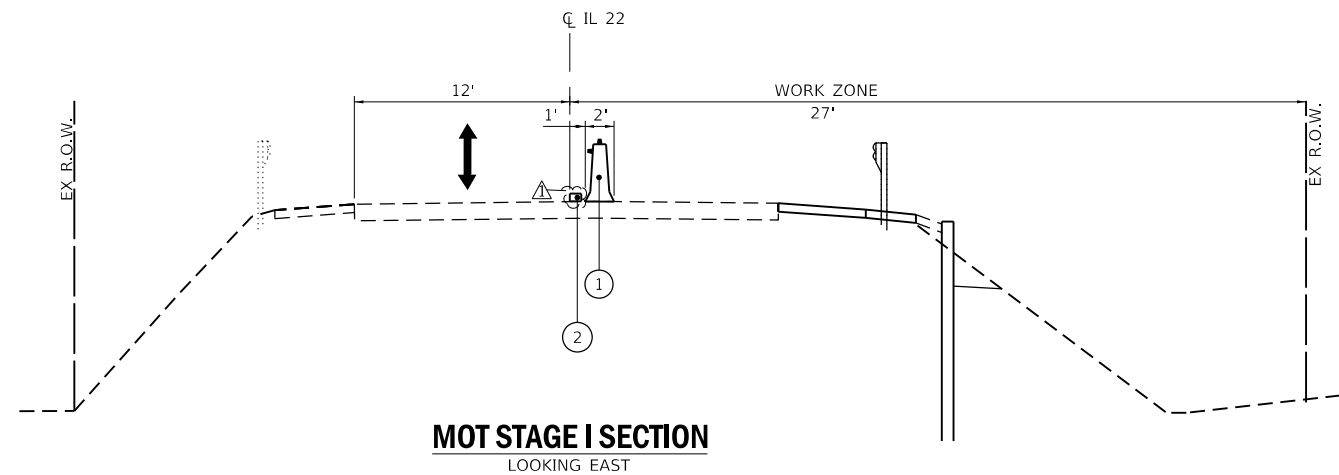
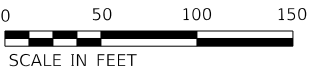
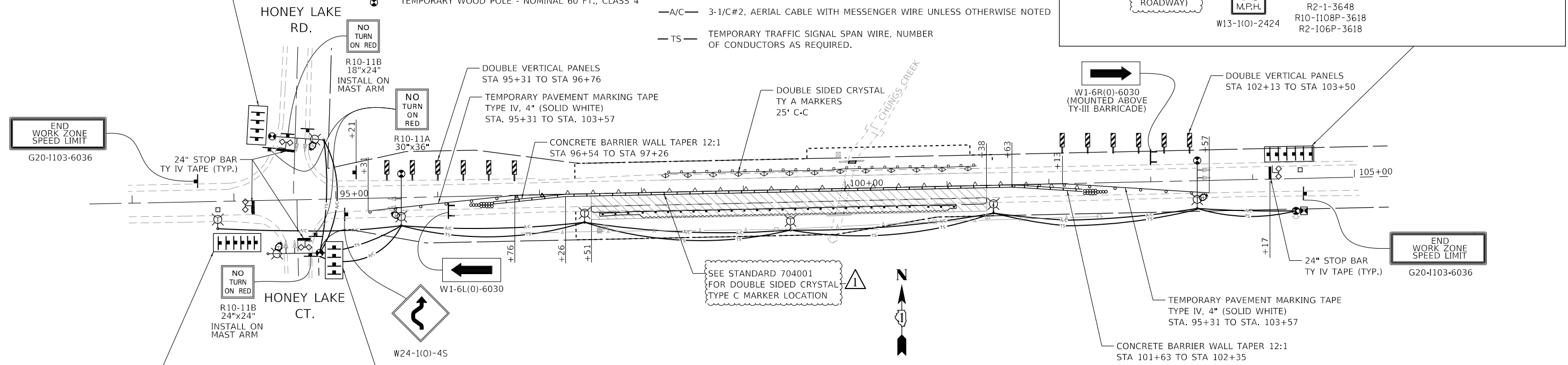
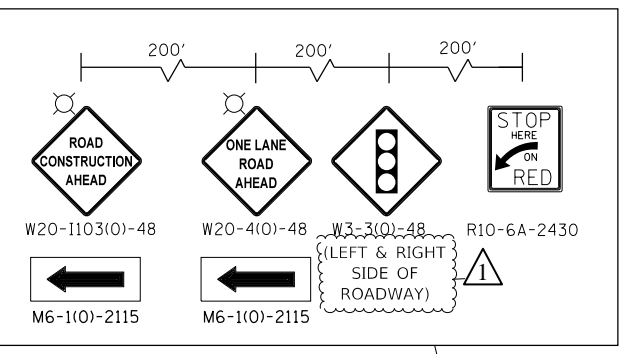
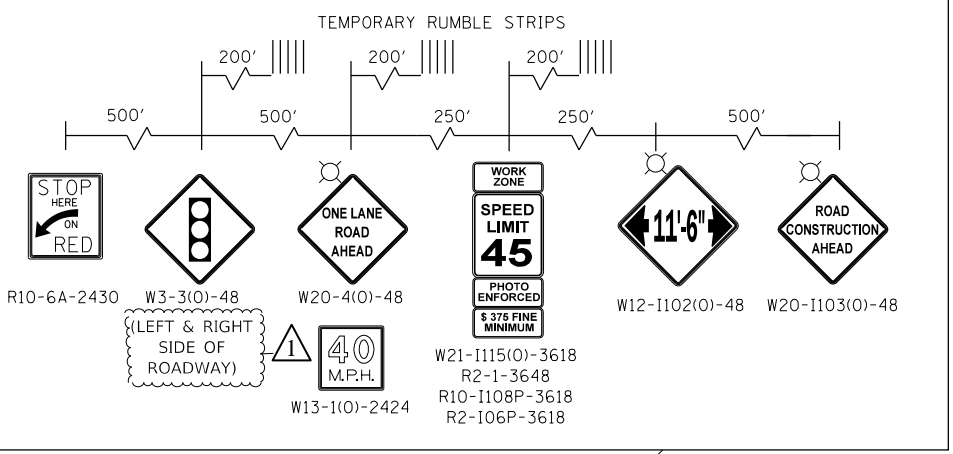
USER NAME = jpong	DESIGNED - JKP	REVISED
PLOT SCALE = 10.0000 "/in.	DRAWN - DMW	REVISED -
PLOT DATE = 10/22/2018	CHECKED - SPF	REVISED -
	DATE - 07-13-2018	REVISED -

STATE OF ILLINOIS
 DEPARTMENT OF TRANSPORTATION

* 338/337 F.A.P. RTE.		SECTION		COUNTY	TOTAL SHEETS	SHEET NO.	
		337 2016-051B					LAKE
SCALE: SHEET 1 OF 1 SHEETS STA. TO STA.						ILLINOIS	FED. AID PROJECT
IL 22 OVER CHUNGS CREEK/HONEY LAKE DRAIN MAINTENANCE OF TRAFFIC - GENERAL NOTES				CONTRACT NO. 62D35			

LEGEND

- WORK ZONE
- TEMPORARY CONCRETE BARRIER W/ DOUBLE SIDED CRYSTAL TYPE C MARKERS @ 25' C-C
- SIGN ON PERMANENT OR PORTABLE SUPPORT
- DOUBLE VERTICAL PANEL AT 25' MIN. 1' FROM EDGE OF PAVEMENT
- TYPE III BARRICADE
- 400W, 120V, MCIII HPS, WITH PHOTO CELL 15' MA, 50' MH ON WOOD POLE, CLASS 4
- TEMPORARY WOOD POLE - NOMINAL 60 FT., CLASS 4
- TEMPORARY IMPACT ATTENUATOR (REDIRECTIVE, NARROW), TEST LEVEL 3
- DRUM AT 50' C-C SPACING IN TANGENT, 20' C-C SPACING TAPERS, AND 10' C-C SPACING IN CURVES/RADII
- TEMPORARY LED TRAFFIC SIGNAL HEAD, NUMBER OF SECTION AND DISPLAY AS REQUIRED.
- DETECTOR LOOPS
- TEMPORARY VIDEO DETECTOR
- TEMPORARY TRAFFIC CONTROLLER WITH UPS AND BOTTOM PLATE MOUNTED TO WOOD POLE
- A/C 3-1/C#2, AERIAL CABLE WITH MESSENGER WIRE UNLESS OTHERWISE NOTED
- TS TEMPORARY TRAFFIC SIGNAL SPAN WIRE, NUMBER OF CONDUCTORS AS REQUIRED.



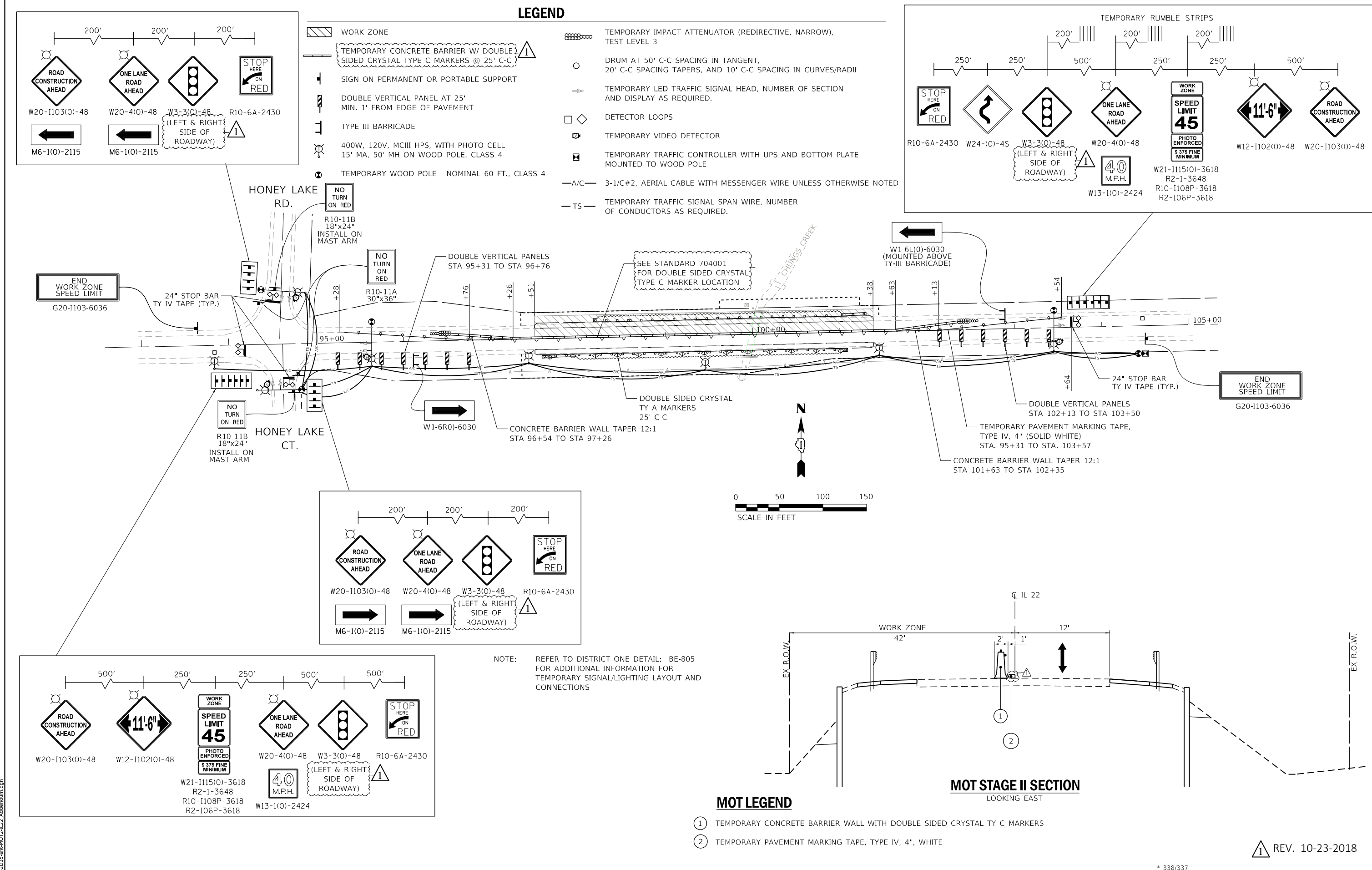
NOTE: REFER TO DISTRICT ONE DETAIL: BE-805 FOR ADDITIONAL INFORMATION FOR TEMPORARY SIGNAL/LIGHTING LAYOUT AND CONNECTIONS

- MOT LEGEND**
- ① TEMPORARY CONCRETE BARRIER WALL WITH DOUBLE SIDED CRYSTAL TY C MARKERS
 - ② TEMPORARY PAVEMENT MARKING TAPE, TYPE IV, 4", WHITE

MODEL: I:\MODEL\NAMES
 FILE NAME: D:\62D35-2\62D35-2\MOT1-IL22_Addendum.dgn

USER NAME = _USER_	DESIGNED - JKP	REVISED
DRAWN - DMW	REVISED -	
PLOT SCALE = 100.0000' / in.	CHECKED - SPF	REVISED -
PLOT DATE = 10/22/2018	DATE - 07-13-2018	REVISED -

REV. 10-23-2019

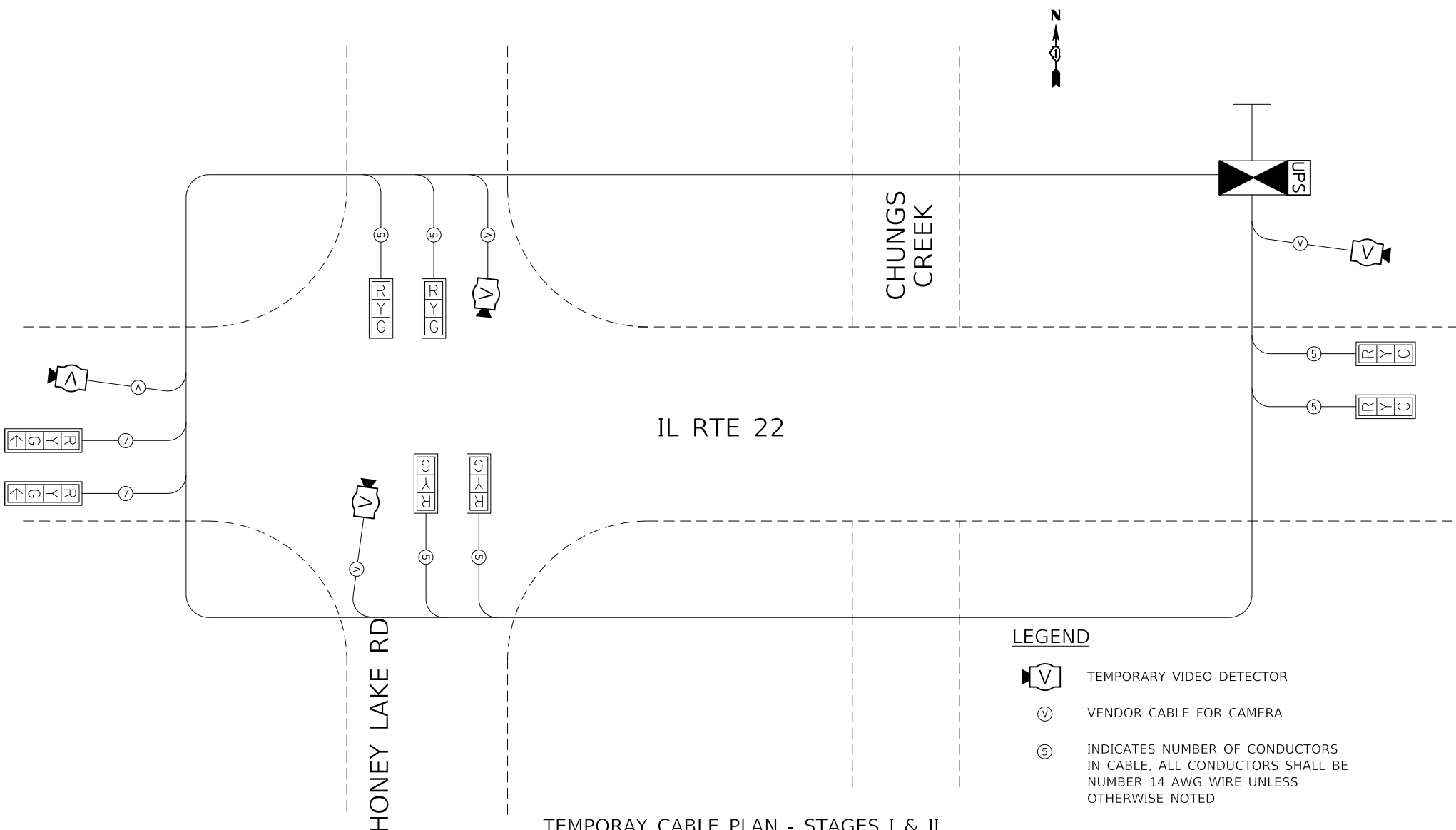


MODEL: 141001.DWG
FILE NAME: D:\2015\6-23-2015\6-23-2015-2017-IL22_Addendum.dwg

MODEL: Default
FILE NAME: \CHUP\1511\chupare\1\DOT\6598\FTB_181_0061\Work Order #6 ILR 22 @ Diches\CADD_Sheets\162035-cht-MOT\31L22_Accendium.dgn

NOTES FOR TEMPORARY TRAFFIC SIGNALS

1. ALL CONTROL EQUIPMENT INCLUDING EMERGENCY PRE-EMPTION AND COMMUNICATION DEVICES FOR THE TEMPORARY TRAFFIC SIGNAL(S) SHALL BE FURNISHED BY THE CONTRACTOR.
2. ONLY CONTROLLERS SUPPLIED BY ONE OF THE DISTRICT APPROVED CLOSED LOOP EQUIPMENT MANUFACTURES WILL BE APPROVED FOR USE AT TEMPORARY SIGNAL LOCATIONS. ALL CONTROLLERS USED FOR TEMPORARY TRAFFIC SIGNALS SHALL BE FULLY ACTUATED NEMA MICROPROCESSOR BASED WITH RS232 DATA ENTRY PORTS COMPATIBLE WITH EXISTING MONITORING SOFTWARE APPROVED BY IDOT DISTRICT 1. INSTALLED IN A NEMA TS2 CABINET. ONLY ONE BRAND OF CONTROLLER WILL BE ACCEPTED FOR ANY ONE CONTRACT.
3. ALL TRAFFIC SIGNAL SECTIONS SHALL BE LED AND 12" (300MM) DIAMETER. HEADS SHALL BE PLACED AS INDICATED ON THE TEMPORARY TRAFFIC SIGNAL PLAN OR AS DIRECTED BY THE ENGINEER. THE POSITION ON THE SPAN WIRE OR AT LOCATIONS ILLUSTRATED ON THE PLANS FOR CONSTRUCTION STAGING. THE TEMPORARY TRAFFIC SIGNAL SHALL REMAIN IN OPERATION DURING ALL SIGNAL HEAD RELOCATIONS. EACH TEMPORARY TRAFFIC SIGNAL HEAD SHALL HAVE ITS OWN CABLE FROM THE CONTROLLER CABINET TO THE SIGNAL HEAD.
4. UNINTERRUPTIBLE POWER SUPPLY (UPS) SYSTEMS SHALL BE INSTALLED AND MADE OPERATIONAL AT TEMPORARY TRAFFIC SIGNAL INSTALLATIONS WHERE UPS IS INSTALLED AT THE EXISTING TRAFFIC SIGNAL. TEMPORARY TRAFFIC SIGNALS AT RAILROAD INTERSECTIONS, AND TEMPORARY TRAFFIC SIGNALS AT INTERSECTIONS WITH FIRE STATION ACTUATED EMERGENCY VEHICLE PRE-EMPTION, OR WHEN INDICATED ON THE PLANS.
5. DETECTION AT TEMPORARY TRAFFIC SIGNALS SHALL BE INCLUDED FOR ALL APPROACHES OF THE INTERSECTION UNLESS INDICATED OTHERWISE ON THE PLANS. THE DETECTION SYSTEM MUST MEET THE SPECIFICATIONS OF DISTRICT 1 AND THE CONTRACTOR SHALL PLACE THE DETECTORS INTO OPERATION TO THE SATISFACTION OF THE ENGINEER.

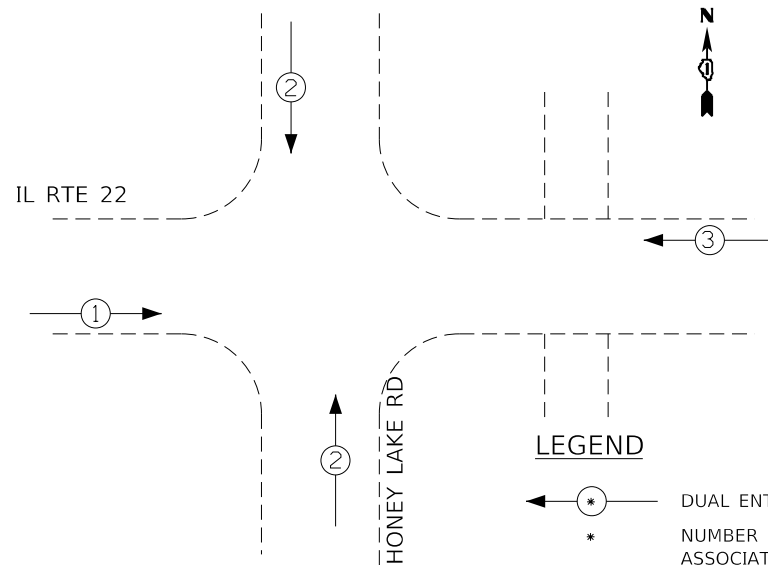


LEGEND

- TEMPORARY VIDEO DETECTOR
- VENDOR CABLE FOR CAMERA
- INDICATES NUMBER OF CONDUCTORS IN CABLE, ALL CONDUCTORS SHALL BE NUMBER 14 AWG WIRE UNLESS OTHERWISE NOTED

TEMPORARY CABLE PLAN - STAGES I & II
NOT TO SCALE

CONTROLLER SEQUENCE - STAGE I & II



LEGEND

- DUAL ENTRY
- NUMBER REFERS TO ASSOCIATED PHASE

PHASE DESIGNATION DIAGRAM

SCHEDULE OF QUANTITIES

ITEM	UNIT	QTY.
TEMPORARY BRIDGE TRAFFIC SIGNAL INSTALLATION	EACH	1
TEMPORARY TRAFFIC SIGNAL TIMING	EACH	1

IDOT TRAFFIC SIGNAL INSTALLATION ELECTRICAL SERVICE REQUIREMENTS - STAGE I & II					
TYPE	NO. LAMPS	WATTAGE		% OPERATIONS	TOTAL WATTAGE
		INCAND.	LED		
SIGNAL (RED)	8		17	0.50	68
(YELLOW)	8		25	0.25	50
(GREEN)	10		15	0.25	37.5
ARROW	-		12	0.10	0
PED. SIGNAL	-		25	1.00	0
CONTROLLER	1		100	1.00	100
VIDEO SYSTEM	1	150		1.00	150
TOTAL =					361
ENERGY COSTS-					
ENERGY SUPPLY- CONTACT: LEONARD ANDERSON					
PHONE: 708-235-2346					
COMPANY: COMMONWEALTH EDISON					

REV. 10-23-2018