

014

11-09-2018 LETTING ITEM 014

STATE OF ILLINOIS  
DEPARTMENT OF TRANSPORTATION

E.A.J. WEB	SECTION	COUNTY	TOTAL SHEETS	SHEET NO.
94	2018-064-BP	COOK	10	1
PROJECT			CONTRACT NO. 62G84	

FOR INDEX OF SHEETS, SEE SHEET NO. 2

IMPROVEMENT IS LOCATED  
IN THE CITY OF CHICAGO

TRAFFIC DATA

ADDISON STREET:

2014 ADT = 27900  
POSTED SPEED LIMIT=30 MPH

I-90/94 KENNEDY EXPY:

2017 ADT = 279400  
POSTED SPEED LIMIT=55 MPH

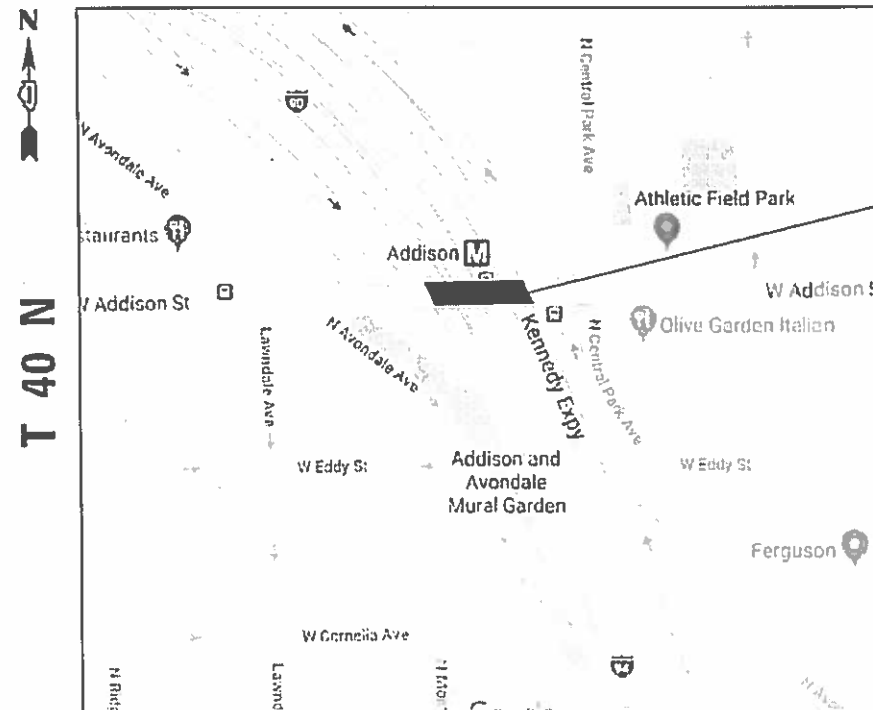
**PROPOSED  
HIGHWAY PLANS**

FAI ROUTE 94: I-90/94  
AT ADDISON ST (SN 016-0669)

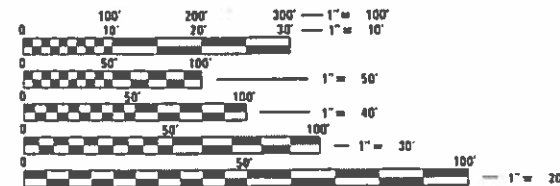
SECTION 2018-064-BP  
PROJECT: NHPP-HPGC(005)  
BRIDGE PAINTING  
COOK COUNTY

C-91-271-18

R 13 E



SN 016-0669  
ADDISON STREET  
OVER I-90/94 (JFK)



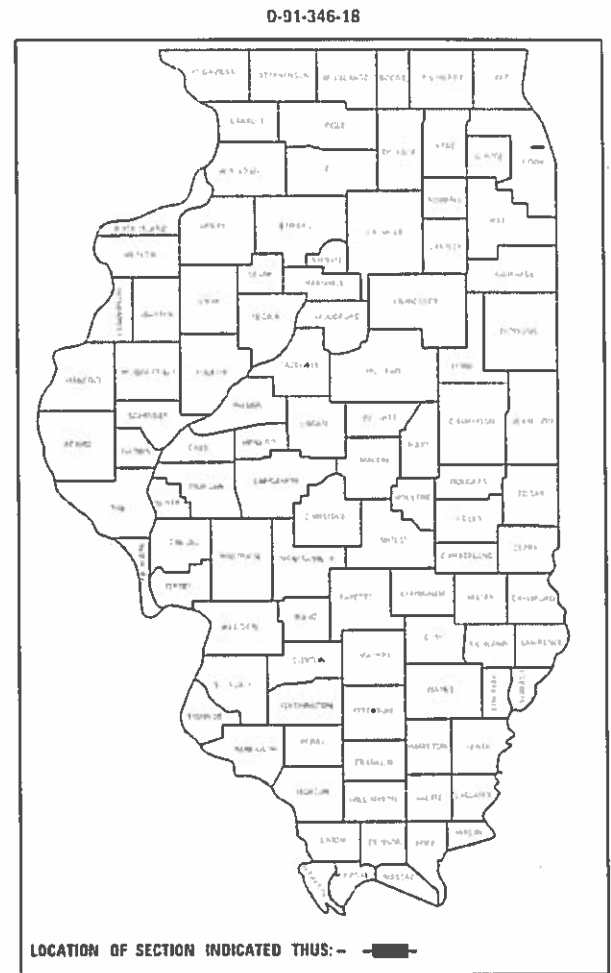
FULL SIZE PLANS HAVE BEEN PREPARED USING STANDARD  
ENGINEERING SCALES. REDUCED SIZED PLANS WILL NOT  
CONFORM TO STANDARD SCALES. IN MAKING MEASUREMENTS  
ON REDUCED PLANS, THE ABOVE SCALES MAY BE USED.

C.U.A.N.  
CHICAGO UTILITY ALERT NETWORK  
1-312-744-7000

PROJECT ENGINEER: MIDY, J. ALAIN (847) 221-3056  
PROJECT MANAGER; AQUEEL, FAWAD (847) 705-4247

CONTRACT NO. 62G84

JEFFERSON TOWNSHIP



LOCATION OF SECTION INDICATED THUS: -

STATE OF ILLINOIS  
DEPARTMENT OF TRANSPORTATION

SUBMITTED August 13, 2018  
Anthony J. Quigley / MS  
REGIONAL ENGINEER

Oct 5, 18  
EA, ETC  
ENGINEER OF DESIGN AND ENVIRONMENT

Oct 5, 18  
Paul P. Ch...  
DIRECTOR OF HIGHWAYS PROJECT IMPLEMENTATION

PRINTED BY THE AUTHORITY  
OF THE STATE OF ILLINOIS

**INDEX OF SHEETS**

SHEET NO.	DESCRIPTION
1.	TITLE SHEET
2.	INDEX OF SHEETS AND GENERAL NOTES
3.	SUMMARY OF QUANTITIES
4-7.	BRIDGE DETAILS SN 016-0669
8.	FREEWAY ENTRANCE AND EXISTING RAMP CLOSURE DETAILS (TC-08)
9.	TRAFFIC CONTROL DETAILS FOR FREEWAY SINGLE AND MULTI-LANE WEAVE (TC-09)
10.	TRAFFIC CONTROL DETAILS FOR FREEWAY SHOULDER CLOSURES AND PARTIAL RAMP CLOSURES (TC-17)

**STATE STANDARDS**

STD NO.	DESCRIPTION
701400-09	APPROACH TO LANE CLOSURE, FREEWAY/EXPRESSWAY
701401-11	LANE CLOSURE, FREEWAY/EXPRESSWAY
701411-09	LANE CLOSURE, MULTILANE, AT ENTRANCE OR EXIT RAMP, FOR SPEEDS > 45 MPH
701428-01	TRAFFIC CONTROL SETUP AND REMOVAL FREEWAY / EXPRESSWAY
701446-09	TWO LANE CLOSURE, FREEWAY / EXPRESSWAY
701901-07	TRAFFIC CONTROL DEVICES

**GENERAL NOTES**

BEFORE STARTING ANY EXCAVATION, THE CONTRACTOR SHALL CALL •C. U. A. N. • AT (312) 744-7000 FOR FIELD LOCATIONS OF BURIED ELECTRIC, TELEPHONE AND GAS UTILITIES. 48 HOUR NOTIFICATION IS REQUIRED.

THE CONTRACTOR SHALL COORDINATE CONSTRUCTION ACTIVITIES WITH UTILITY COMPANIES, AND THE CITY OF CHICAGO.

THE CONTRACTOR WILL NOT BE ALLOWED TO SET UP A YARD OR FIELD OFFICE ON STATE PROPERTY WITHOUT WRITTEN PERMISSION FROM THE DEPARTMENT.

PLAN DIMENSIONS AND DETAILS RELATIVE TO EXISTING PLANS ARE SUBJECT TO NOMINAL CONSTRUCTION VARIATIONS. THE CONTRACTOR SHALL FIELD VERIFY EXISTING DIMENSIONS AND MAKE NECESSARY APPROVED ADJUSTMENTS PRIOR TO ORDERING OF MATERIALS. SUCH VARIATIONS SHALL NOT BE CAUSE FOR ADDITIONAL COMPENSATION FOR A CHANGE IN SCOPE OF THE WORK. HOWEVER, THE CONTRACTOR WILL BE PAID FOR THE QUANTITY ACTUALLY FURNISHED BASED AT THE UNIT PRICE BID FOR THE WORK.

THE CONTRACTOR SHALL CONTACT THE DISTRICT ONE TRAFFIC CONTROL SUPERVISOR AT (847)705-4151 A MINIMUM OF 72 HOURS IN ADVANCE OF BEGINNING WORK.

THESE PLANS HAVE BEEN PREPARED FROM NOTES RECEIVED FROM THE BUREAU OF MAINTENANCE BRIDGE INSPECTORS.

DO NOT SCALE PLANS FOR CONSTRUCTION DIMENSIONS.

IT SHALL BE THE CONTRACTOR'S RESPONSIBILITY TO PROTECT AND MAINTAIN THE EXISTING BRIDGE LIGHTING AT ANY LOCATIONS THAT LIGHTING IS ENCOUNTERED ADJACENT TO AN AREA TO BE CLEANED AND PAINTED.

THE CONTRACTOR SHALL BE REQUIRED TO PROVIDE ACCESS TO ABUTTING PROPERTY AT ALL TIMES DURING THE CONSTRUCTION OF THIS PROJECT.

WHEN ARTIFICIAL LIGHTING IS UTILIZED IN NIGHTTIME OPERATIONS, THE CONTRACTOR SHALL EXERCISE THE OUTMOST PRECAUTIONS PREVENTING ADVERSE VISIBILITY TO THE MOTORING PUBLIC AND ADJACENT RESIDENTIAL AREAS.

THE CONTRACTOR SHALL REQUEST AND GAIN THE APPROVAL FROM THE ILLINOIS DEPARTMENT OF TRANSPORTATION'S EXPRESSWAY TRAFFIC OPERATIONS ENGINEER AT [www.idot1cs.com](http://www.idot1cs.com) TWENTY FOUR (24) HOURS IN ADVANCE OF ALL DAILY LANE, RAMP AND SHOULDER CLOSURES AND 7 DAYS IN ADVANCE OF ALL PERMANENT AND WEEKEND CLOSURES ON ALL FREEWAYS AND/OR EXPRESSWAYS IN DISTRICT ONE.

CONTRACTOR MAY BE REQUIRED TO ATTEND WEEKLY COORDINATION MEETING TO COORDINATE INTERSTATE LANE CLOSURES WITH OTHER CONTRACTORS IN THE AREA. MEETINGS TAKE PLACE ON THURSDAY AT 10 AM AT THE IDOT EMERGENCY TRAFFIC PATROL GARAGE, 3501 S. NORMAL, CHICAGO, IL. CONTACT THE ILLINOIS DEPARTMENT OF TRANSPORTATION, EXPRESSWAY TRAFFIC CONTROL SUPERVISOR (847-705-4151) FOR MORE INFORMATION.

**GENERAL PAINT NOTES**

CLEANING AND PAINTING OF THE EXISTING STRUCTURAL STEEL SHALL BE AS SPECIFIED IN THE SPECIAL PROVISION FOR "CLEANING AND PAINTING EXISTING STEEL STRUCTURES".

ALL BEAMS, BEARINGS AND OTHER STRUCTURAL STEEL SHALL BE CLEANED PER NEAR WHITE BLAST CLEANING - SSPC-SP10. THE AREAS SHALL BE PAINTED ACCORDING TO THE REQUIREMENTS OF PAINT SYSTEM 1 -OZ/E/U. THE COLOR OF THE FINAL FINISH COAT FOR ALL INTERIOR STEEL SURFACES SHALL BE GRAY, MUNSELL NO 5B 7/1. THE COLOR OF THE FINAL FINISH COAT FOR THE EXTERIOR AND BOTTOM FLANGE OF THE FASCIA BEAMS SHALL BE REDDISH BROWN, MUNSELL NO 2.5YR 3/4.

ALL ITEMS (SUCH AS, BUT NOT LIMITED TO: CONDUITS, BRACKETS AND DECK DRAINS) ATTACHED TO OUTSIDE OF THE FASCIA BEAMS SHOULD BE CLEANED AND PAINTED

A MINIMUM OF TWO (2) AIR MONITOR WILL BE REQUIRED TO MONITOR ABRASIVE BLASTING OPERATIONS. SEE SPECIAL PROVISIONS FOR "CONTAINMENT AND DISPOSAL OF LEAD PAINT CLEANING RESIDUES."

MODEL: Default  
FILE NAME: P:\1108\BARDNET\Illinois.gov\RWIDOT\Documents\DOT Offices\District 1\Projects\0134618\BARDNET\Design\0134618-ahb-plan.dgn

USER NAME = gorengautab	DESIGNED -	REVISED -
	DRAWN -	REVISED -
PLOT SCALE = 100.0000' / in.	CHECKED -	REVISED -
PLOT DATE = 8/14/2018	DATE -	REVISED -

**STATE OF ILLINOIS  
DEPARTMENT OF TRANSPORTATION**

**GENERAL NOTES AND GENERAL PAINT NOTES.**

SCALE: SHEET OF SHEETS STA. TO STA.

F.A.I. RTE.	SECTION	COUNTY	TOTAL SHEETS	SHEET NO.
94	2018-064-BP	COOK	10	2
CONTRACT NO. 62GB4				
ILLINOIS FED. AID PROJECT				

SUMMARY OF QUANTITIES			URBAN TOTAL QUANTITIES	CONSTRUCTION TYPE CODE							SUMMARY OF QUANTITIES			TOTAL QUANTITIES	CONSTRUCTION TYPE CODE						
CODE NO	ITEM	UNIT		0047								CODE NO	ITEM		UNIT						
67000400	ENGINEER'S FIELD OFFICE, TYPE A	CAL MO	6	6																	
67100100	MOBILIZATION	L SUM	1	1																	
70102640	TRAFFIC CONTROL AND PROTECTION, STANDARD 701801	L SUM	1	1																	
70200100	NIGHTTIME WORK ZONE LIGHTING	L SUM	1	1																	
X7011015	TRAFFIC CONTROL AND PROTECTION (EXPRESSWAYS)	L SUM	1	1																	
Z0007112	CONTAINMENT AND DISPOSAL OF LEAD PAINT CLEANING RESIDUES	L SUM	1	1																	
Z0010501	CLEANING AND PAINTING STEEL BRIDGE NO. 1	L SUM	1	1																	
Z0048665	RAILROAD PROTECTIVE LIABILITY INSURANCE	L SUM	1	1																	

FILE NAME =	USER NAME = gorengautab	DESIGNED -	REVISED -
p:\N\LOB\AE\BID\INTEG\Illinois.gov\FWIDOT\Documents\VDOT	Offices\District N\Projects\DI346IB\CADD\Design\DI346	DRAWN -	REVISED -
	PLOT SCALE = 100,0000' / 1in	CHECKED -	REVISED -
	PLOT DATE = 8/14/2018	DATE -	REVISED -

**STATE OF ILLINOIS  
DEPARTMENT OF TRANSPORTATION**

<b>SUMMARY OF QUANTITIES</b>				
SCALE:	SHEET NO.	OF	SHEETS	STA. TO STA.

F.A.I. RTE.	SECTION	COUNTY	TOTAL SHEETS	SHEET NO.
94	2018-064-BP	COOK	10	3
<b>CONTRACT NO. 62G84</b>				
FED. ROAD DIST. NO. 1   ILLINOIS   FED. AID PROJECT				

**EXISTING STRUCTURE:**

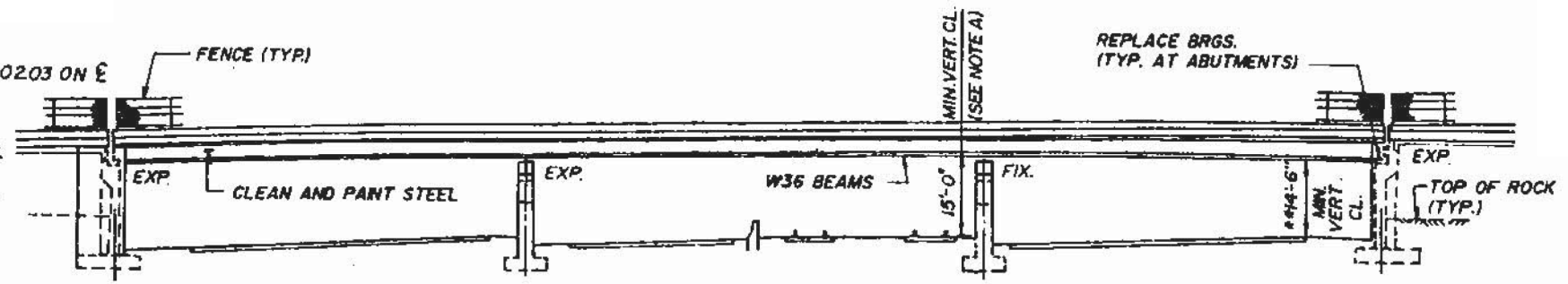
ADDISON STREET OVER F.A.I. ROUTE 90/94 AT STA. 591+02.03 ON E REVERSIBLE LANES, SEC. 0808-511 HB, BUILT IN 1960  
STRUCTURE NO. 016-0669

**SUBSTRUCTURE:**

A) ABUTMENTS: CANTILEVER TYPE ON SPREAD FOOTINGS.  
B) PIERS: MULTIPLE COLUMN ON SPREAD FOOTINGS.  
C) WING WALL: CANTILEVER TYPE ON SPREAD FOOTINGS.

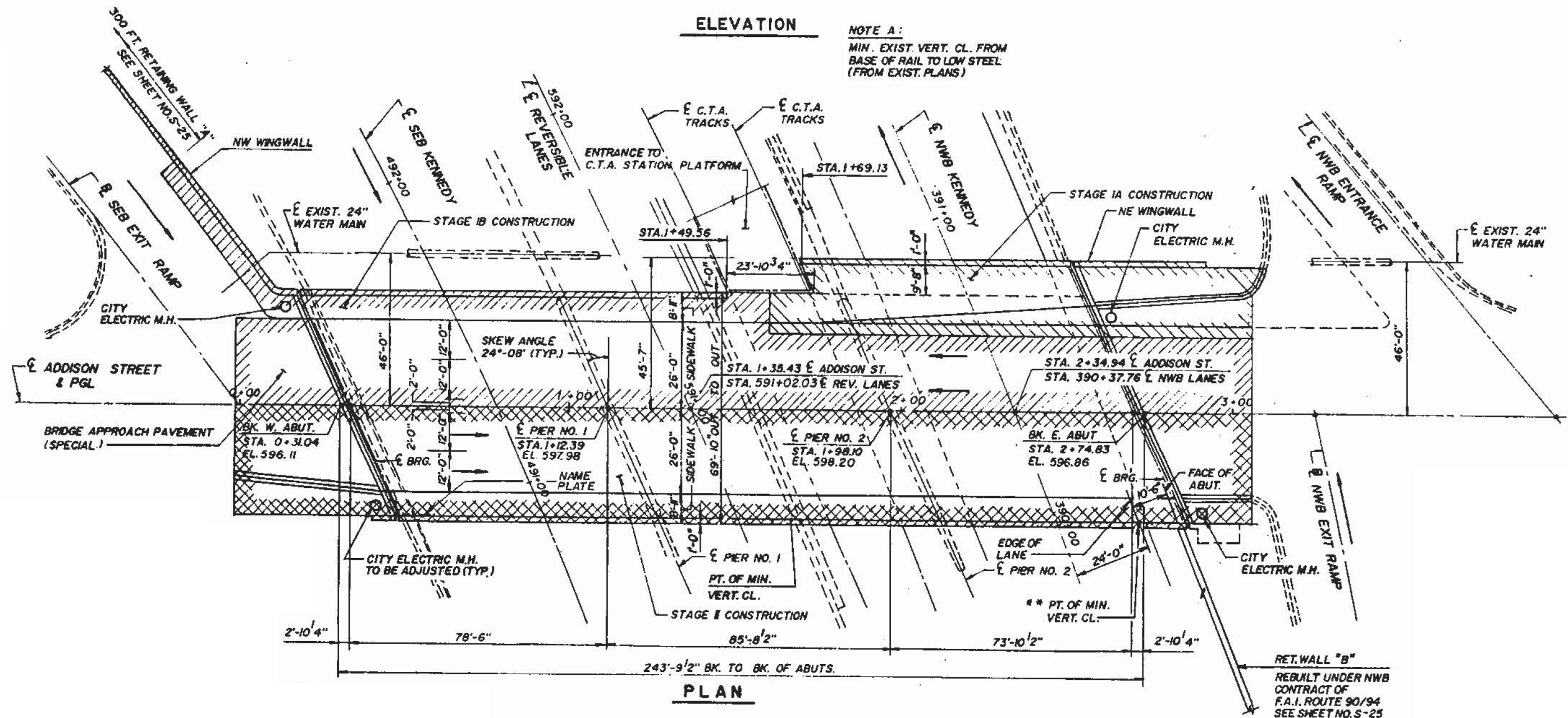
**SUPERSTRUCTURE:**

THREE SPAN CONTINUOUS NON-COMPOSITE STEEL WIDE FLANGE BEAMS WITH COVER PLATES AT PIERS.  
REINFORCED CONCRETE DECK



**ELEVATION**

**NOTE A:**  
MIN. EXIST. VERT. CL. FROM BASE OF RAIL TO LOW STEEL (FROM EXIST. PLANS)



**PLAN**

**FOR INFORMATION ONLY**

MODEL: Default  
 FILE: \\nas01\p01\08\BRED\NTEC\Illinois.gov\p01\DOT\Documents\DOT Office\Drawings\1\projects\01346\BRCADD\data\Drawings\01346-18-shr-pln-bp.dwg

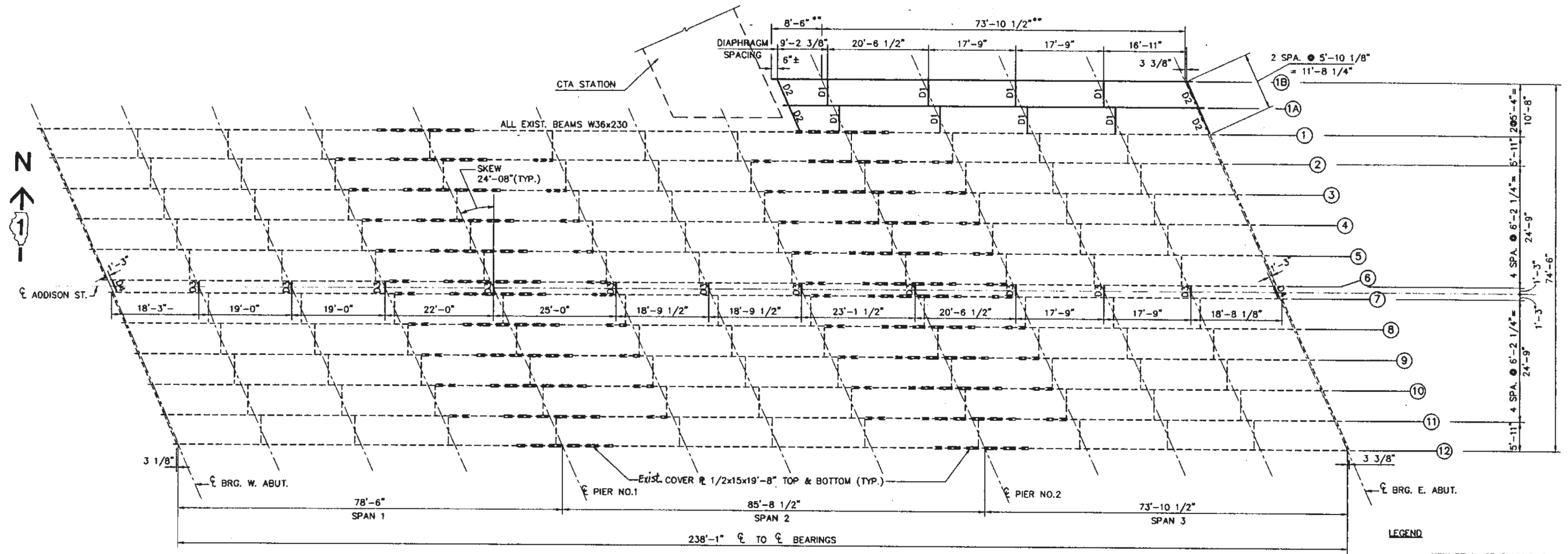
USER NAME = gorengautab	DESIGNED -	REVISED -
DRAWN -	REVISED -	
PLOT SCALE = 100,0000' / in.	CHECKED -	REVISED -
PLOT DATE = 8/14/2018	DATE -	REVISED -

STATE OF ILLINOIS  
DEPARTMENT OF TRANSPORTATION

EXISTING BRIDGE PLAN	
ADDISON ST OVER I-90/94 (SN 016-0669)	
SCALE:	SHEET 1 OF 4 SHEETS STA. TO STA.

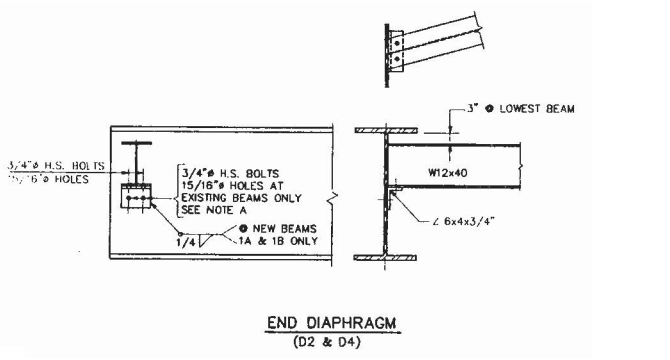
F.A.I. RTE.	SECTION	COUNTY	TOTAL SHEETS	SHEET NO.
94	2018-064-BP	COOK	10	4
CONTRACT NO. 62G84				
ILLINOIS FED. AID PROJECT				



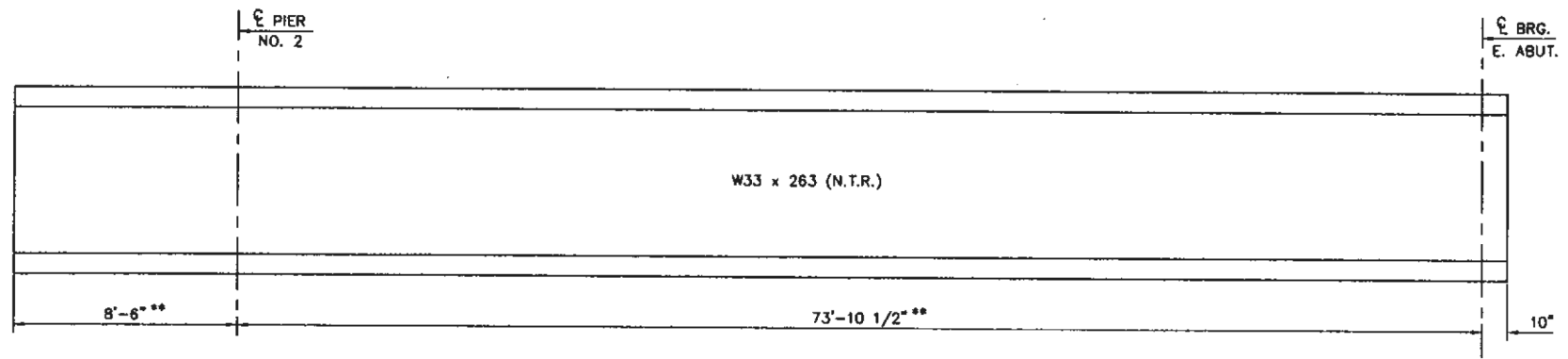


**FRAMING PLAN**

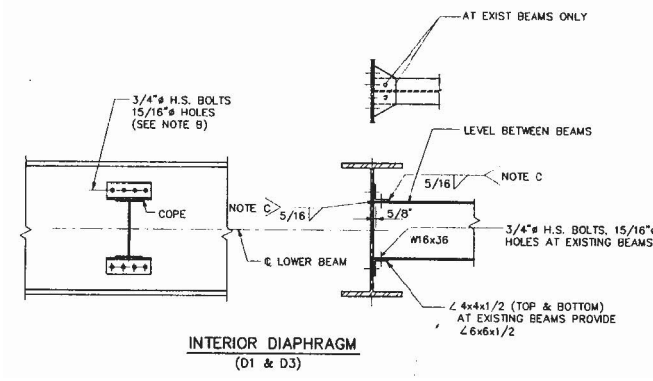
**LEGEND**  
 ——— NEW BEAM OR DIAPHRAGM  
 - - - - EXIST. BEAM OR DIAPHRAGM



**END DIAPHRAGM (D2 & D4)**



**BEAM ELEVATION (BEAMS 1A AND 1B)**



**INTERIOR DIAPHRAGM (D1 & D3)**

**FOR INFORMATION ONLY**

MODEL: Default  
 FILE: \\mspc-pw\ulb8e\BID\ITC\Illinois\gov\pww\DOT\Documents\DOT - Offices\Director 1\Projects\346 (R/CAD)Data\Design\346-18-sbr-pln.dgn

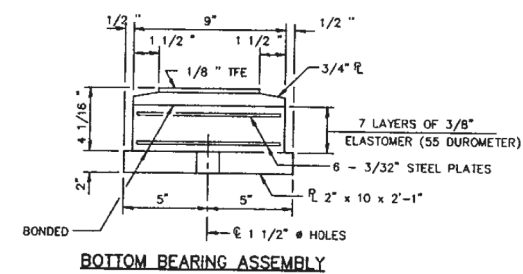
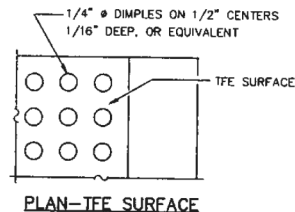
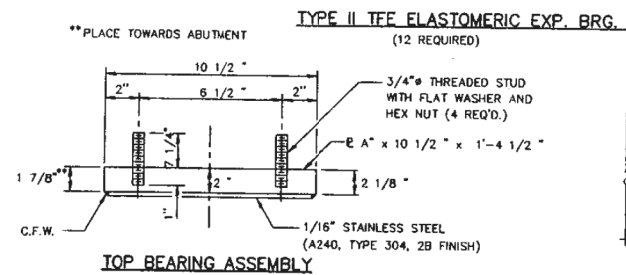
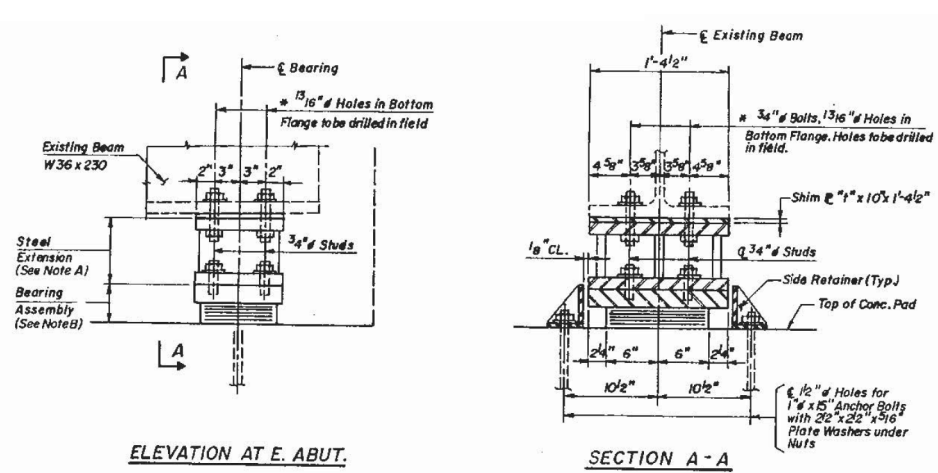
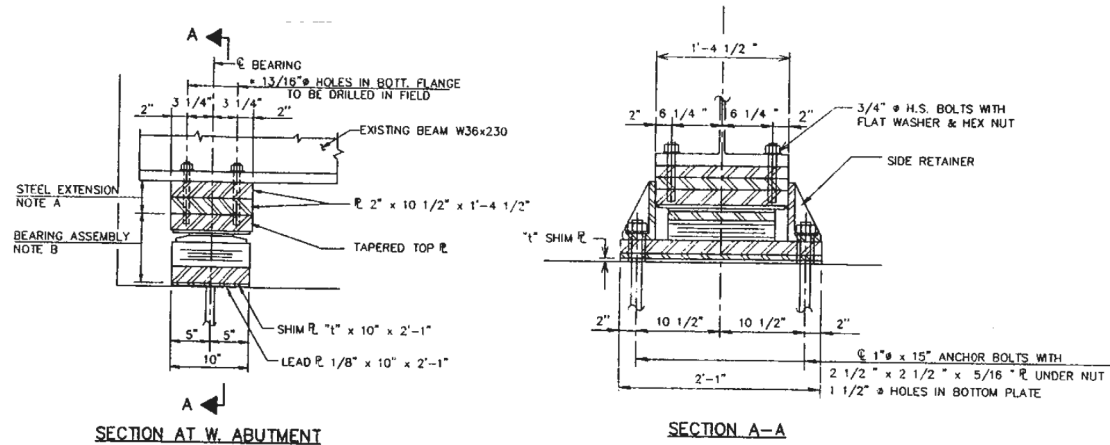
USER NAME = gorenautab	DESIGNED -	REVISED -
	DRAWN -	REVISED -
PLOT SCALE = 100.0000' / in.	CHECKED -	REVISED -
PLOT DATE = 8/14/2018	DATE -	REVISED -

**STATE OF ILLINOIS  
 DEPARTMENT OF TRANSPORTATION**

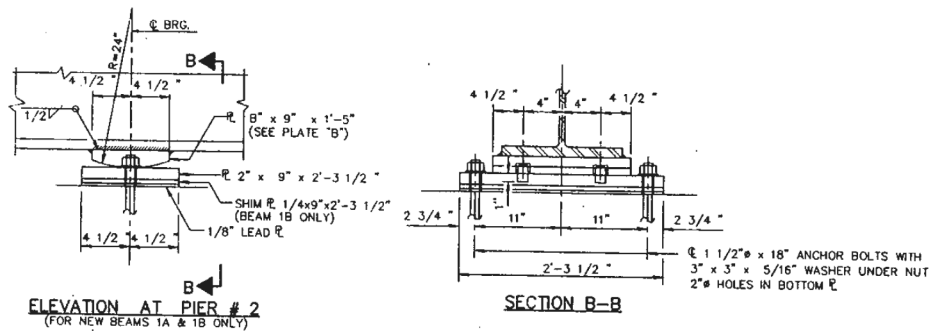
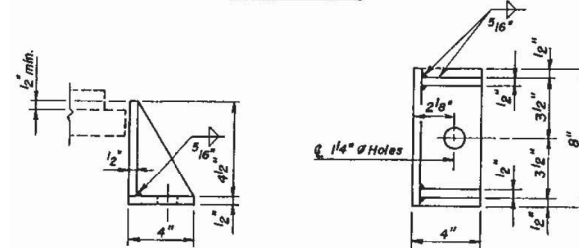
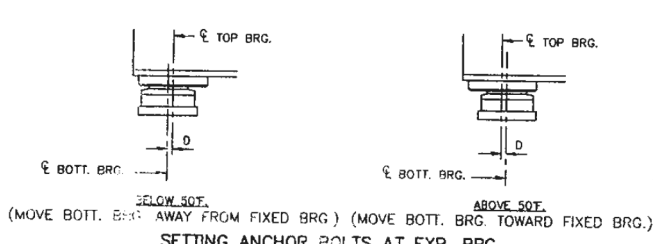
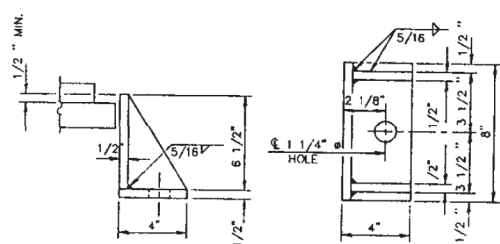
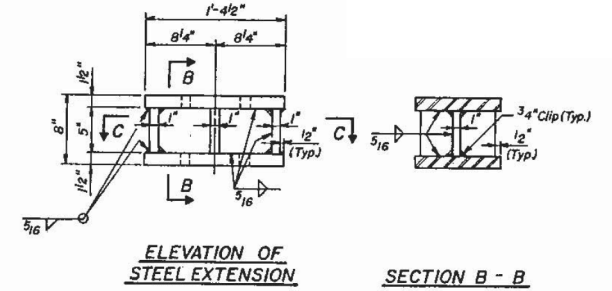
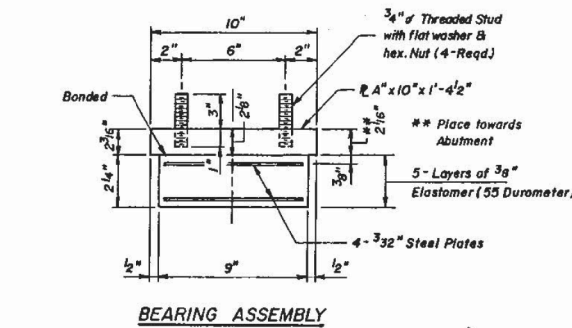
**EXISTING BRIDGE FRAMING PLAN  
 ADDISON ST OVER I-90/94 (SN 016-0669)**

SCALE: SHEET 3 OF 4 SHEETS STA. TO STA.

F.A.I. RTE.	SECTION	COUNTY	TOTAL SHEETS	SHEET NO.
94	2018-064-BP	COOK	10	6
CONTRACT NO. 62G84				
ILLINOIS FED. AID PROJECT				



**SECTION THRU TFE**  
 NOTE: THE 1/8" TFE SHEET SHALL BE BONDED DIRECTLY TO THE TOP STEEL PLATE WITH A TWO-COMPONENT, MEDIUM VISCOSITY EPOXY RESIN, CONFORMING TO THE REQUIREMENTS OF THE FEDERAL SPECIFICATION MMM-A-134, TYPE I. THE BOND AGENT SHALL BE APPLIED ON THE FULL AREA OF THE CONTACT SURFACES. BONDING OF 1/8" TFE SHEET DURING VULCANIZING PROCESS WILL BE PERMITTED PROVIDED THE PROCESS AND METHOD OF ADJUSTING ASSEMBLY HEIGHT IS APPROVED BY THE ENGINEER.



**FIXED BEARING**  
(TWO REQUIRED)

**FOR INFORMATION ONLY**

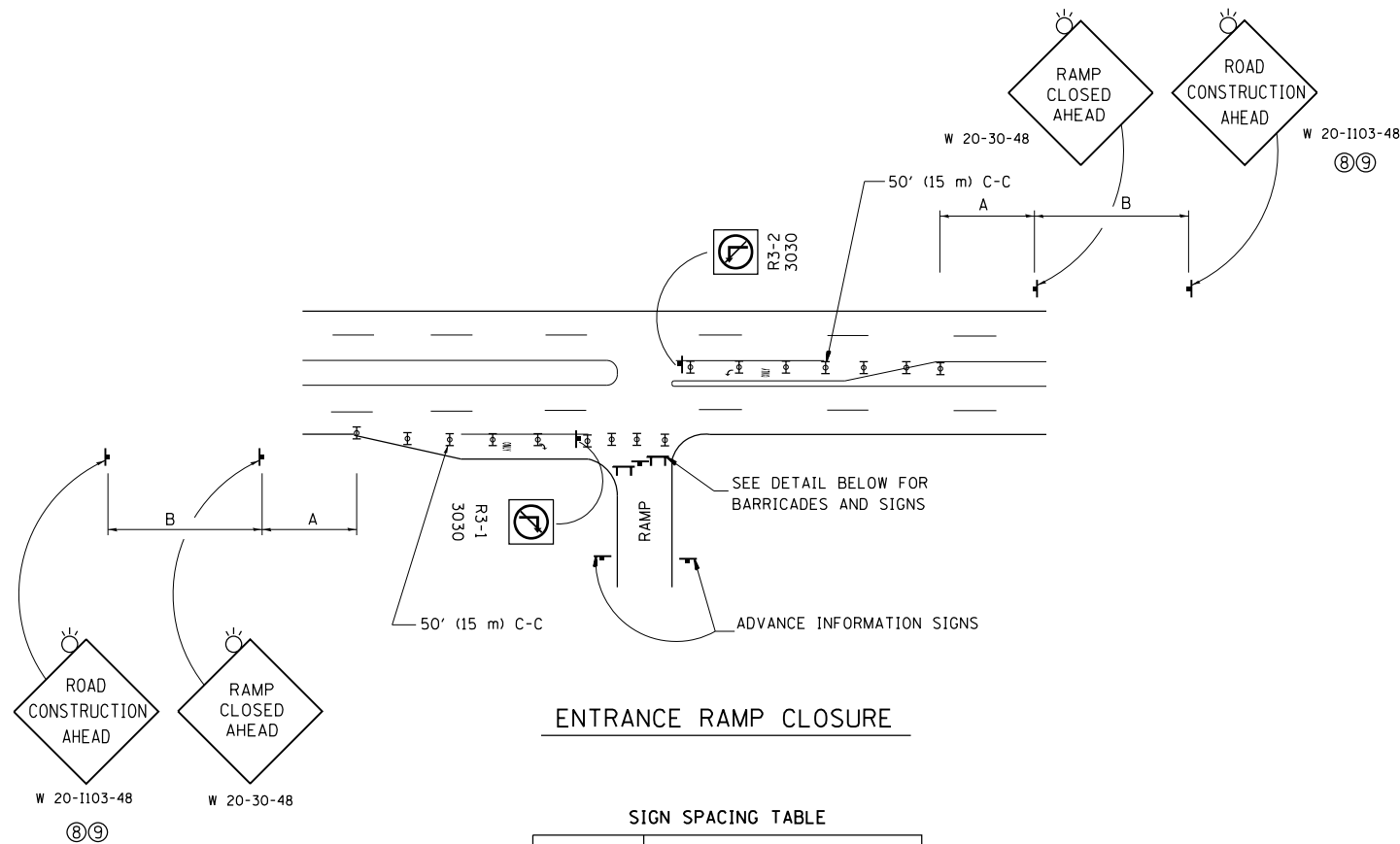
MODEL: Default FILE: \\nas01\p001\B&E\BID\NTEC\Illinois.gov\FWD\DOT\Documents\BIDD\Office\BIDD\ref\1\proj\sect\01346\BRCAD\B&E\BID\ref\1\proj\sect\01346\18-shr-ep-b&e.dgn

USER NAME = gorenautab	DESIGNED -	REVISED -
PLOT SCALE = 100,0000' / in.	DRAWN -	REVISED -
PLOT DATE = 8/14/2018	CHECKED -	REVISED -
	DATE -	REVISED -

**STATE OF ILLINOIS  
DEPARTMENT OF TRANSPORTATION**

<b>EXISTING BRIDGE BEARING DETAILS</b>	
<b>ADDISON ST OVER I-90/94 (SN 016-0669)</b>	
SCALE:	SHEET 4 OF 4 SHEETS STA. TO STA.

F.A.I. RTE.	SECTION	COUNTY	TOTAL SHEETS	SHEET NO.
94	2018-064-BP	COOK	10	7
CONTRACT NO. 625G84				
ILLINOIS FED. AID PROJECT				

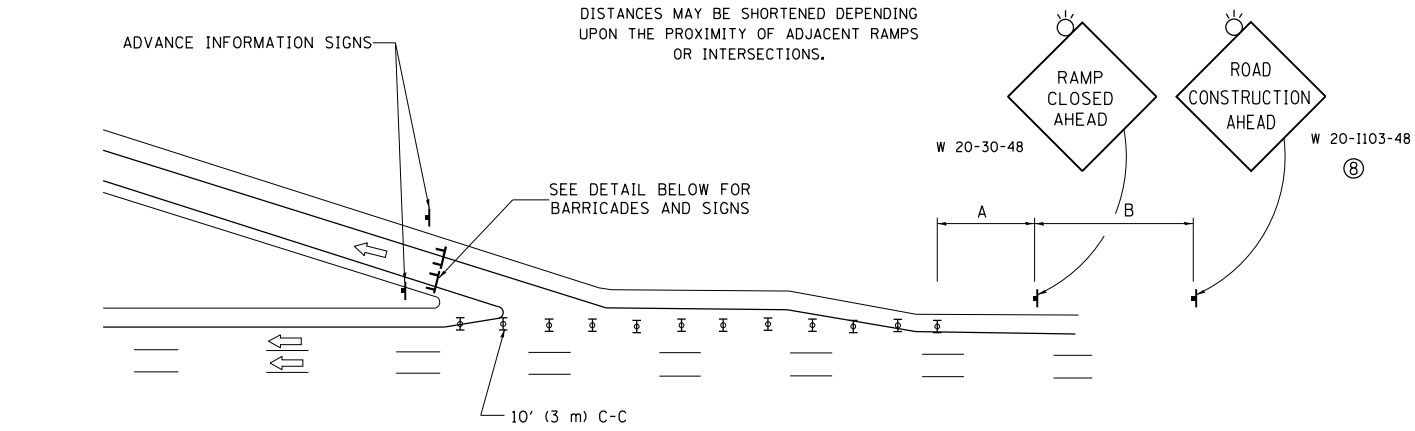


**ENTRANCE RAMP CLOSURE**

**SIGN SPACING TABLE**

FACILITY	DISTANCE BETWEEN SIGNS	
	A	B
EXPRESSWAY >24 HOURS	1000' (300 m)	1500' (450 m)
EXPRESSWAY <24 HOURS	500' (150 m)	500' (150 m)
ARTERIAL 55 MPH	500' (150 m)	500' (150 m)
ARTERIAL 50-45 MPH	350' (100 m)	350' (100 m)
ARTERIAL <45 MPH	200' (60 m)	200' (60 m)

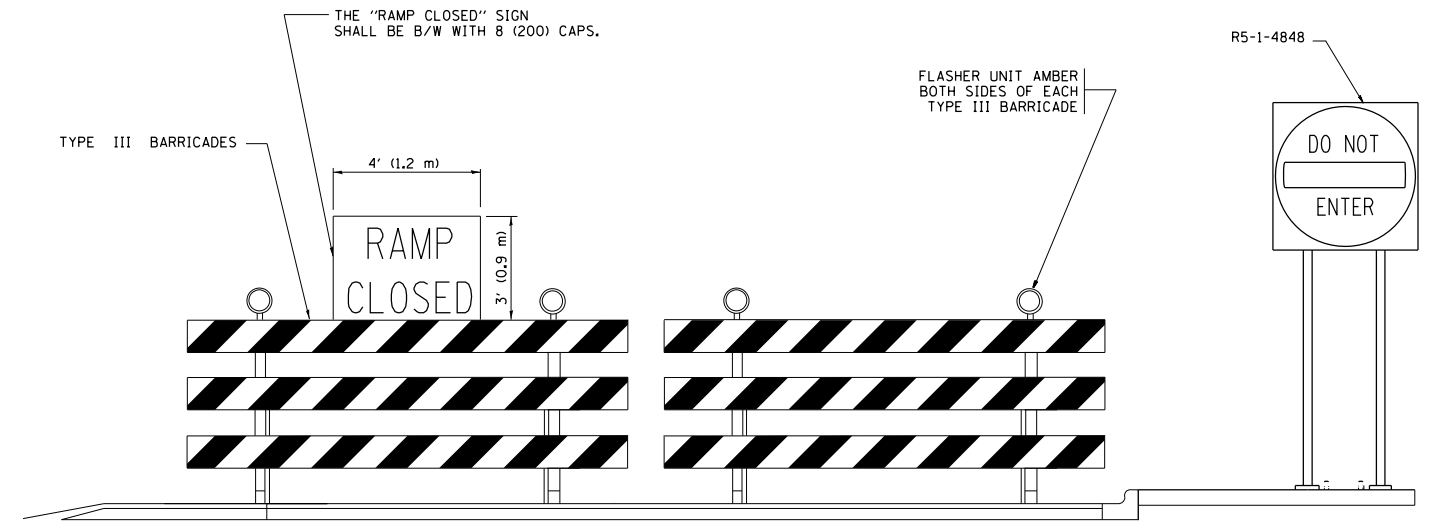
DISTANCES MAY BE SHORTENED DEPENDING UPON THE PROXIMITY OF ADJACENT RAMPS OR INTERSECTIONS.



**EXIT RAMP CLOSURE**

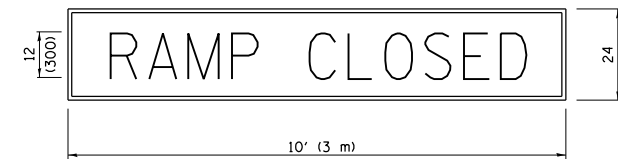
**SYMBOLS**

- ⊥ TYPE II BARRICADE OR DRUM
- ⊥ TYPE III BARRICADE WITH 2 FLASHING LIGHTS



**DETAIL FOR REQUIRED BARRICADES & SIGNS**

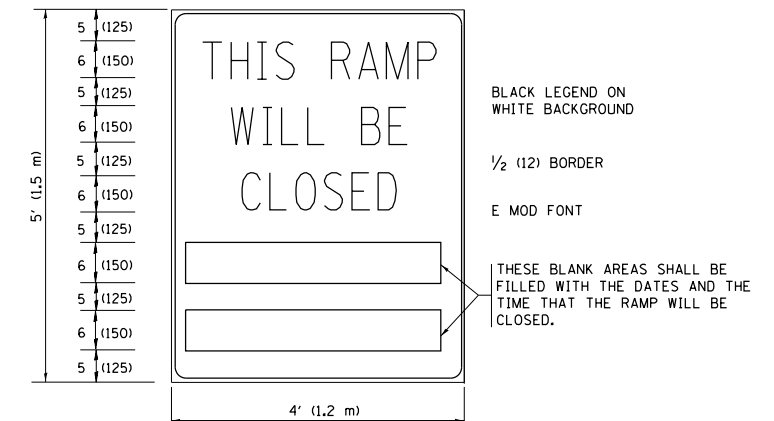
**RAMP CLOSURE ADVANCE WARNING SIGN**



BLACK LEGEND ON ORANGE BACKGROUND MOUNTED DIAGONALLY  
E MOD FONT  
1 (25) BORDER

THESE SIGNS ARE REQUIRED ON ALL THE EXIT GUIDE SIGNS FOR EXIT RAMPS THAT WILL BE CLOSED FOR MORE THAN FOUR (4) CONSECUTIVE DAYS.

**RAMP CLOSURE ADVANCE INFORMATION SIGN**



BLACK LEGEND ON WHITE BACKGROUND

1/2 (12) BORDER

E MOD FONT

THESE BLANK AREAS SHALL BE FILLED WITH THE DATES AND THE TIME THAT THE RAMP WILL BE CLOSED.

THESE SIGNS ARE REQUIRED ON BOTH SIDES OF THE RAMP, MINIMUM OF 1 WEEK IN ADVANCE OF THE CLOSURE.

THESE SIGNS SHALL BE FABRICATED AND PAID FOR ACCORDING TO THE TEMPORARY INFORMATION SIGNING SPECIAL PROVISION

**GENERAL NOTES:**

- ① CONES MAY BE SUBSTITUTED FOR DRUMS OR TYPE II BARRICADES DURING DAY OPERATIONS. CONES SHALL BE A MINIMUM OF 28 (700) HIGH.
- ② VERTICAL BARRICADES SHALL NOT BE USED FOR RAMP CLOSURES.
- ③ A FLAGGER SHALL BE POSITIONED AT EACH CLOSED RAMP THAT IS OPEN TO CONSTRUCTION VEHICLES, PRECEDED BY A W20-7 FLAGGER WARNING SIGN.
- ④ ALL ROUTE MARKERS AND TRAILBLAZER ASSEMBLIES WHICH DIRECT MOTORISTS TO A CLOSED ENTRANCE RAMP SHALL BE COVERED WHEN THE RAMP IS CLOSED FOR MORE THAN FOUR (4) DAYS.
- ⑤ THE SIGNING AND BARRICADING WHICH IS REQUIRED BY THIS DETAIL SHALL BE INCLUDED IN THE COST OF TRAFFIC CONTROL AND PROTECTION (EXPRESSWAYS).
- ⑥ AUTHORIZATION FROM THE DISTRICT'S BUREAU OF TRAFFIC IS REQUIRED FOR ALL RAMP CLOSURES.
- ⑦ THE RAMP CLOSURE ADVANCE INFORMATION SIGNS SHALL BE ERECTED IF THE CLOSURE TIME EXCEEDS TWENTY-FOUR (24) HOURS. ADDITIONAL ADVANCE WARNING SIGNS ON EXIT GUIDE SIGNING WILL BE REQUIRED FOR EXIT RAMP CLOSURES THAT EXCEED FOUR (4) DAYS IN LENGTH.
- ⑧ ROAD CONSTRUCTION AHEAD SIGNS MAY BE OMITTED WHEN THIS DETAIL IS USED IN CONJUNCTION WITH OTHER TRAFFIC CONTROL THAT ALREADY INCLUDES A ROAD CONSTRUCTION AHEAD SIGN.
- ⑨ ARTERIAL ROAD CONSTRUCTION AHEAD SIGNS SHALL BE INSTALLED ON THE LEFT SIDE OF TRAFFIC IF THE MEDIAN IS MORE THAN 10 FT WIDE.

ALL DIMENSIONS ARE IN INCHES (MILLIMETERS) UNLESS OTHERWISE SHOWN.

FILE NAME =	USER NAME = gorengautob	DESIGNED - D.W.S.	REVISED - S.P.B. 01-07
p:\1\084EBIDINTEG\illinois.gov\PIWIDOT\Documents\IDOT Offices\District 1\Projects\0134\Browns\Design\DistStd.dgn		CHECKED -	REVISED - S.P.B. 12-09
Default	PLOT SCALE = 100.0000' / 1in.	DATE - 02-83	REVISED - M.D. 06-13
	PLOT DATE = 8/14/2018		REVISED - M.D. 01-18

**STATE OF ILLINOIS  
DEPARTMENT OF TRANSPORTATION**

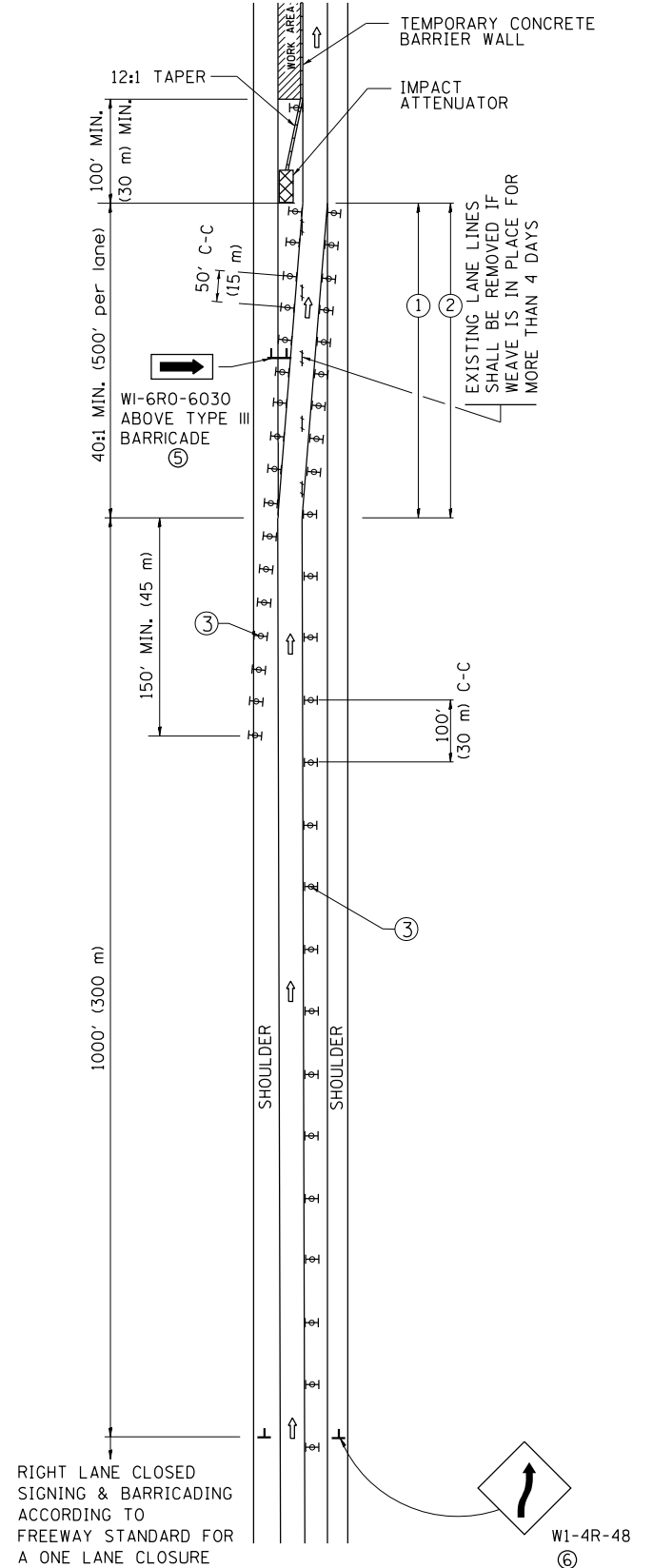
**ENTRANCE AND EXIT RAMP  
CLOSURE DETAILS**

SCALE: NONE SHEET 1 OF 1 SHEETS STA. TO STA.

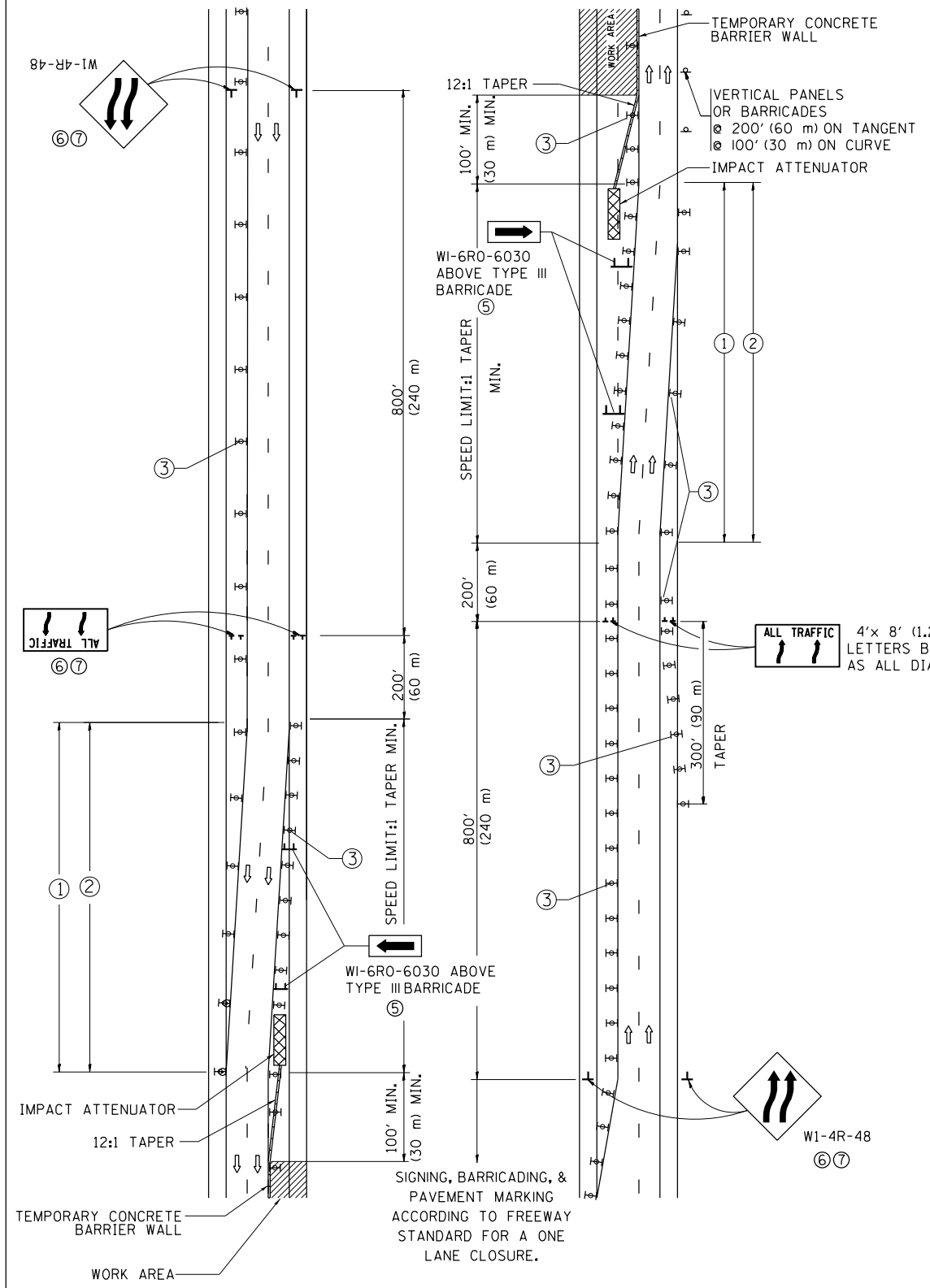
F.A.I. RTE.	SECTION	COUNTY	TOTAL SHEETS	SHEET NO.
94	2018-064-BP	COOK	10	8
<b>TC-08</b>		<b>CONTRACT NO. 62684</b>		
ILLINOIS FED. AID PROJECT				



# SINGLE LANE WEAVE



# MULTI-LANE WEAVE



### GENERAL NOTES

- ① EXISTING CONFLICTING PAVEMENT MARKING LINES SHALL BE REMOVED. PAVEMENT MARKING REMOVAL SHALL NOT BE REQUIRED FOR SINGLE LANE WEAVES UNDER 4 DAYS IN DURATION.
- ② CONTINUOUS REFLECTIVE TEMPORARY PAVEMENT MARKING TAPE SHALL BE PLACED THROUGHOUT THE TAPER AND FOR 300' (90 m) ALONG SIDE THE WORK AREA WHERE THE CLOSURE TIME IS GREATER THAN FOURTEEN DAYS. THE LEFT EDGE LINE SHALL BE YELLOW AND THE RIGHT EDGE LINE SHALL BE WHITE. FOR MULTI-LANE WEAVES LANE LINES SHALL BE 5 INCH, 10'-30' (3 m-9 m) SKIP DASH, WHITE.
- ③ PLASTIC DRUMS WITH STEADY BURN LIGHTS AT 50' (15 m) C-C SPACING IN TAPERS AND 100' (30 m) C-C SPACING IN TANGENTS.
- ④ ALL SIGNS SHALL BE POST MOUNTED IF THE CLOSURE TIME EXCEEDS FOUR DAYS.
- ⑤ TYPE III BARRICADES MAY BE OMITTED FOR SINGLE-LANE WEAVES UNDER 24-HOURS IN DURATION. W1-6 SIGNS WILL STILL BE REQUIRED. IF THE WIDTH OF OFFSET IS LESS THAN 6' THEN THE TYPE III BARRICADE WITH ATTACHED ARROW SIGN PANEL CAN BE ELIMINATED IN THE TAPER AREAS.
- ⑥ WHEN THE LENGTH OF THE SHIFTED SEGMENT (DISTANCE BETWEEN WEAVE POINTS) IS LESS THAN 1500', DOUBLE REVERSE CURVE SIGNS (W24-1) SHOULD BE USED INSTEAD OF THE REVERSE CURVE (W1-4) SIGNS. ARROWS ON THE 4'X8' "ALL TRAFFIC" SIGNS SHALL BE THE SAME SHAPE.
- ⑦ THE NUMBER OF ARROWS ON THESE SIGNS SHALL MATCH THE NUMBER OF LANES OPEN TO TRAFFIC.

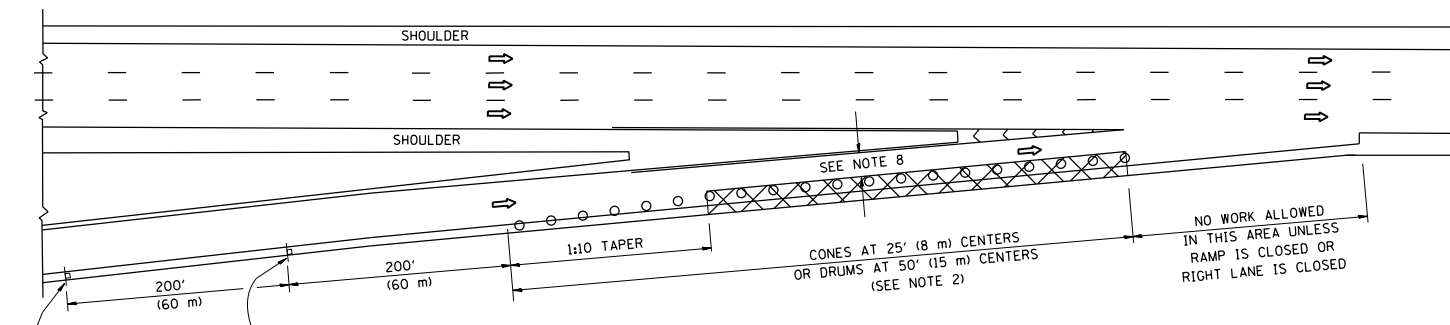
### SYMBOLS

- DIRECTION OF TRAFFIC
- WORK AREA
- SIGN ON PORTABLE OR PERMANENT SUPPORT
- TYPE II BARRICADE OR DRUM WITH MONO-DIRECTIONAL STEADY BURNING LIGHT
- TEMPORARY CONCRETE BARRIER WALL
- IMPACT ATTENUATOR
- W1-4R-48
- W24-1-48

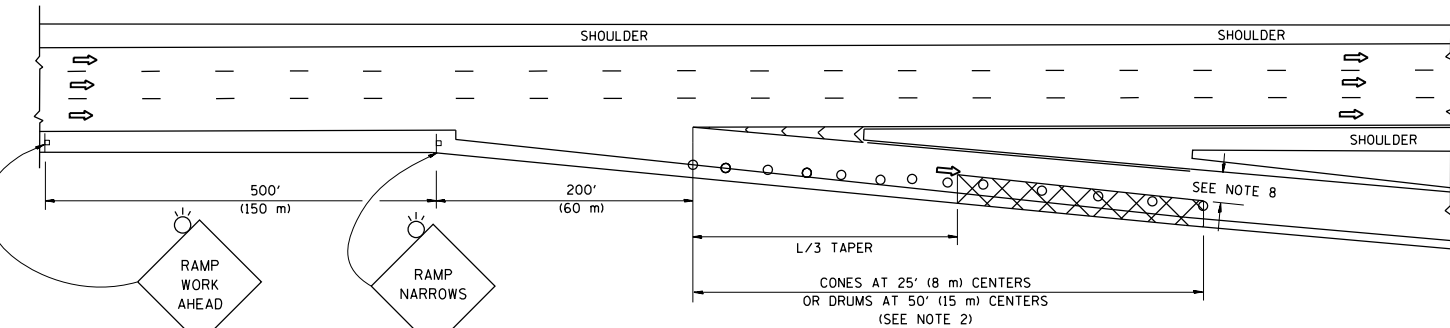
ALL DIMENSIONS ARE IN INCHES (MILLIMETERS) UNLESS OTHERWISE SHOWN

FILE NAME =	USER NAME = gorengautab	DESIGNED - DWS	REVISED - JAF 02-06	<b>STATE OF ILLINOIS DEPARTMENT OF TRANSPORTATION</b>	<b>TRAFFIC CONTROL DETAILS FOR FREEWAY SINGLE &amp; MULTI-LANE WEAVE</b>	F.A.I. RTE.	SECTION	COUNTY	TOTAL SHEETS	SHEET NO.	
PLOT SCALE = 1/8" = 1'-0"						REVISED - SPB 01-07	94	2018-064-BP	COOK	10	9
PLOT DATE = 8/14/2018						REVISED - SPB 12-09	<b>TC-09</b>		<b>CONTRACT NO. 62G84</b>		
DATE - 02-87						REVISED - MD 06-13	FED. ROAD DIST. NO. 1   ILLINOIS   FED. AID PROJECT				
						SCALE: NONE	SHEET NO. 1 OF 1 SHEETS		STA. TO STA.		

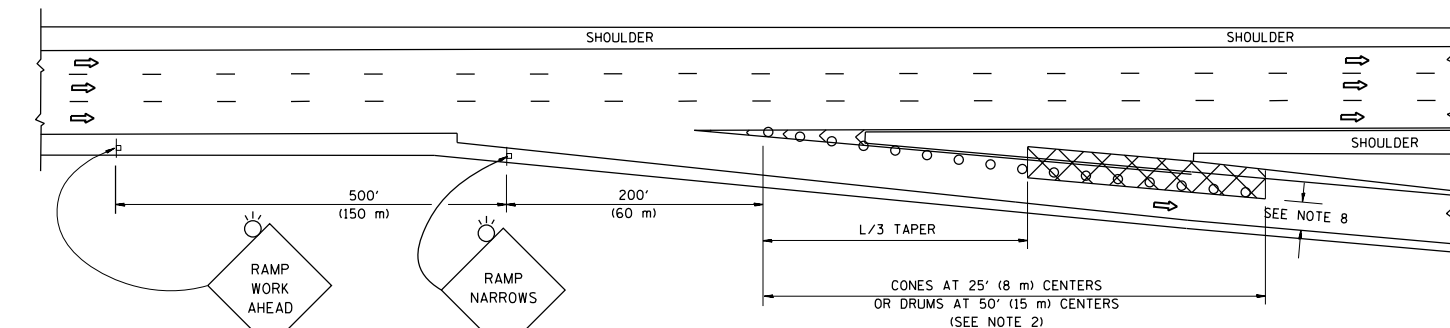
PARTIAL RAMP CLOSURE DETAILS



TYPICAL ENTRANCE RAMP



TYPICAL EXIT RAMP



TYPICAL EXIT RAMP

SYMBOLS

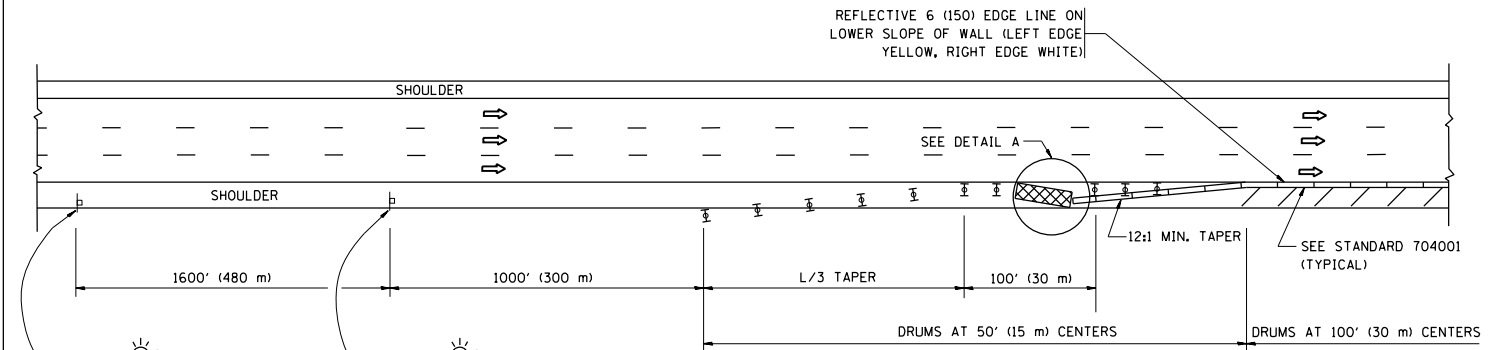
- ACTIVE WORK AREA
- SIGN ON PORTABLE OR PERMANENT SUPPORT
- FLAGGER WITH CONTROL SIGN
- TYPE II BARRICADE OR DRUM
- CONE, DRUM OR BARRICADE
- IMPACT ATTENUATOR OF TYPE AND TEST LEVEL SPECIFIED

GENERAL NOTES

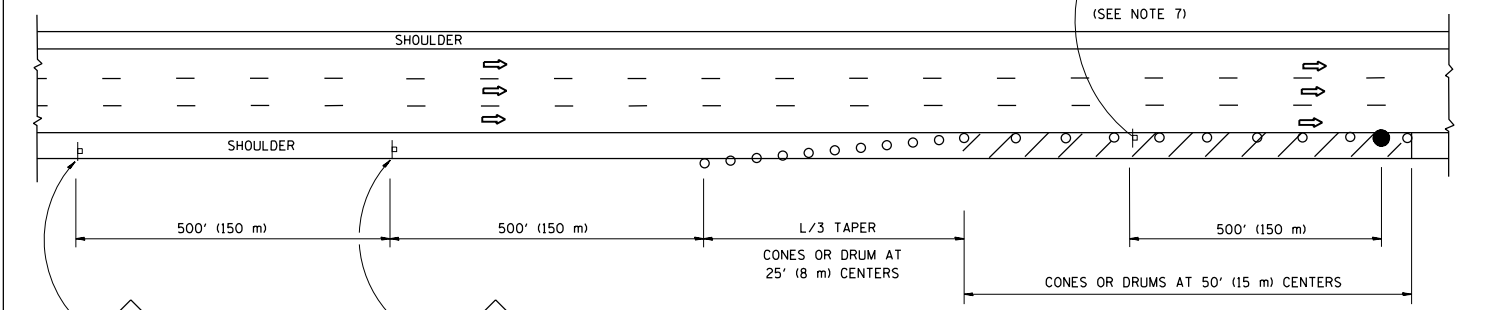
1. THE "L" DISTANCE EQUALS:  

SPEED LIMIT	FORMULAS
45 mph (80 km/h) OR GREATER:	METRIC ENGLISH L=0.65(W)(S) L=(W)(S)
W = WIDTH OF OFFSET IN FEET (METERS)	
S = NORMAL POSTED SPEED MPH (KM/H)	
2. TYPE II BARRICADES OR DRUMS ARE REQUIRED FOR ALL NIGHTTIME CLOSURES. TYPE II BARRICADES OR DRUMS WITH MONODIRECTIONAL STEADY BURN LIGHTS ARE REQUIRED FOR DELINEATING OBSTACLES, EXCAVATIONS, OR HAZARDS EXCEEDING 100 FT (30m) IN LENGTH AT NIGHT.
3. ALL SIGNS SHALL BE POST MOUNTED IF THE CLOSURE TIME EXCEEDS FOUR DAYS.
4. FLASHING LIGHTS SHALL BE USED DURING THE HOURS OF DARKNESS AND SHALL BE INSTALLED ABOVE THE FIRST TWO SETS OF SIGNS.

SHOULDER CLOSURE DETAILS

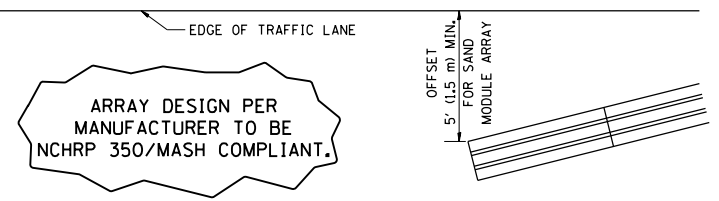


PERMANENT SHOULDER CLOSURE



DAYTIME SHOULDER CLOSURE

THIS DETAIL IS USED WHERE:  
 1. VEHICLES, EQUIPMENT, WORKERS OR THEIR ACTIVITIES ENCR OACH IN AN AREA CLOSER THAN 15' (4.5 m) TO THE EDGE OF PAVEMENT FOR A PERIOD IN EXCESS OF 15 MINUTES.



DETAIL "A"  
 IMPACT ATTENUATOR, TEMPORARY  
 (SEE NOTE 5)

5. THE IMPACT ATTENUATOR, TEMPORARY IS NOT REQUIRED WHEN THE TEMPORARY CONCRETE BARRIER WALL IS PROTECTED BY OR IS TIED INTO THE EXISTING GUARDRAIL. IF OFFSET IS LESS THAN 5 FEET USE NARROW USE TYPE DEVICE TO MEET NCHRP350/MASH.
6. AUTHORIZATION FROM THE DISTRICT'S BUREAU OF TRAFFIC IS REQUIRED FOR ALL FREEWAY CLOSURES.
7. THE FLAGGER AND FLAGGER SIGN ARE REQUIRED AT THE ABOVE WORK SITES WHEN:
  - a. FOUR OR MORE WORK VEHICLES ENTER THE TRAFFIC LANES IN A ONE HOUR PERIOD.
  - b. THE WORK AVTIVITY REQUIRES FREQUENT ENCR OACHMENT INTO THE LANE OPEN TO TRAFFIC.
 THE FLAGGER SHALL BE STATIONED APPROXIMATELY 100' (30 m) TO 200' (60 m) IN ADVANCE OF THE WORKERS.
8. 12' MIN. WIDTH TANGENT SECTION  
 16' MIN. WIDTH CURVE SECTION.

ALL DIMENSIONS ARE IN INCHES (MILLIMETERS) UNLESS OTHERWISE SHOWN.

FILE NAME =	USER NAME = gorengautob	DESIGNED -	REVISED - S.P.B. 01-07	<b>STATE OF ILLINOIS DEPARTMENT OF TRANSPORTATION</b>	<b>TRAFFIC CONTROL DETAILS FOR FREEWAY SHOULDER CLOSURES AND PARTIAL RAMP CLOSURES</b>	F.A.I. R.T.E.	SECTION	COUNTY	TOTAL SHEETS	SHEET NO.	
Default		CHECKED -	REVISED - S.P.B. 12-09			94	2018-064-BP	COOK	10	10	
		DATE - 11-96	REVISED - M.D. 06-13			<b>TC-17</b>		<b>CONTRACT NO. 62G84</b>			
			REVISED - M.D. 01-18			SCALE: NONE	SHEET 1 OF 1 SHEETS	STA. TO STA.	ILLINOIS FED. AID PROJECT		