

032

STATE OF ILLINOIS
DEPARTMENT OF TRANSPORTATION

F.A.P. RTE.	SECTION	COUNTY	TOTAL SHEETS	SHEET NO.
002	(101,102)R-5	MADISON	28	1
ILLINOIS CONTRACT NO. 76L41				

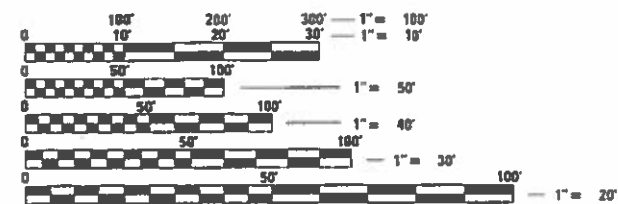
INDEX OF SHEETS
SEE SHEET NO. 2

TRAFFIC DATA:
 IL 3 NORTH OF PONTOON RD.
 2017 ADT=12000 (ACT)
 2037 ADT=13800 (EST)
 SU=8.8%, MU=13.8%
 IL 3 SOUTH OF PONTOON RD.
 2017 ADT=15000 (ACT)
 2037 ADT=17200 (EST)
 SU=6.2%, MU=12.3%

PROPOSED
HIGHWAY PLANS

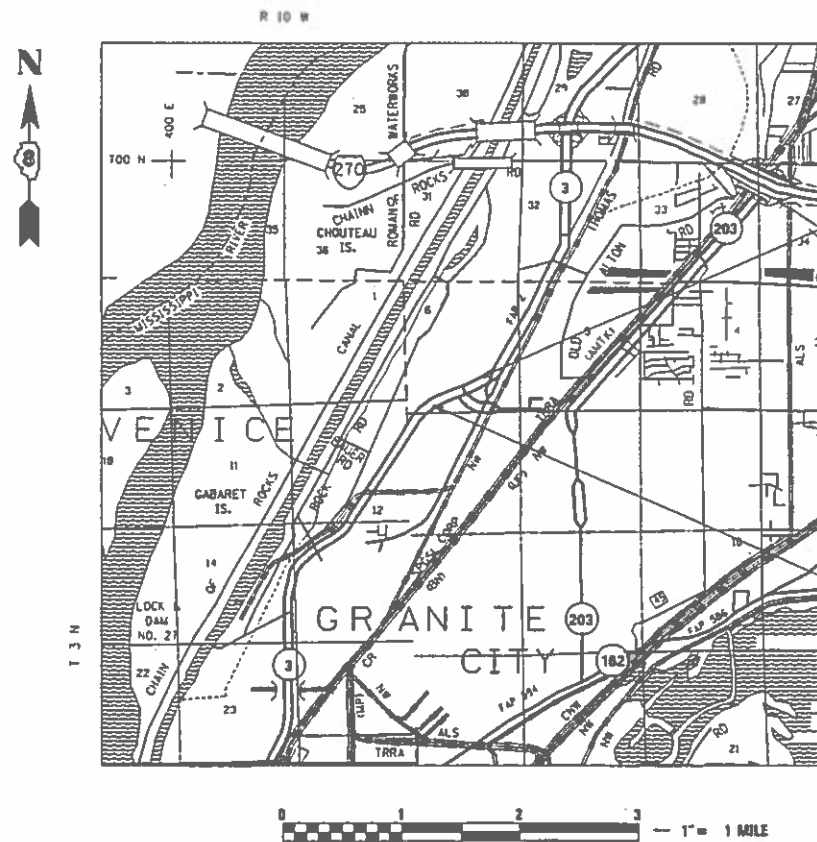
FAP ROUTE 002 (IL 3)
SECTION (101,102)R-5
PROJECT NHPP-VPCQ(318)
IL ROUTE 3 - PAVEMENT
REMOVAL & REPLACEMENT
MADISON COUNTY

C-98-222-18



FULL SIZE PLANS HAVE BEEN PREPARED USING STANDARD ENGINEERING SCALES. REDUCED SIZED PLANS WILL NOT CONFORM TO STANDARD SCALES. IN MAKING MEASUREMENTS ON REDUCED PLANS, THE ABOVE SCALES MAY BE USED.

J.U.L.I.E.
JOINT UTILITY LOCATION INFORMATION FOR EXCAVATION
1-800-892-0123
OR 811



PROJECT END
STATION 1503+01.30
LAT: 38.733123°
LONG: -90.143413°

PROJECT START
STATION 1488+01.30
LAT: 38.734538°
LONG: -90.138437°

LIST OF TOWNSHIPS
GRANITE CITY

GROSS LENGTH = 1500 FT. = 0.284 MILE
NET LENGTH = 1500 FT. = 0.284 MILE

DESIGN DESIGNATION
15,000(19) OTHER ARTERIAL 13.61 (PCC-20)

PROJECT ENGINEER TIM PADGETT 618-346-3325
PROJECT MANAGER JEFF SCHWEIZER 618-346-3208

CONTRACT NO. 76L41

STATE OF ILLINOIS
DEPARTMENT OF TRANSPORTATION

SUBMITTED Aug 16 20 18
Jeffrey Z. Kan...
REGIONAL ENGINEER

Oct 5 20 18
E.A. Elk...
ENGINEER OF DESIGN AND ENVIRONMENT

Oct 5 20 18
Paul P. Ch...
DIRECTOR OF HIGHWAYS PROJECT IMPLEMENTATION

PRINTED BY THE AUTHORITY
OF THE STATE OF ILLINOIS

INDEX OF SHEETS

1	COVER SHEET
2	INDEX OF SHEETS, HIGHWAY STANDARDS, GENERAL NOTES, & COMMITMENTS
3-4	SUMMARY OF QUANTITIES
5-8	TYPICAL SECTIONS
9	SCHEDULE OF QUANTITIES
10-11	ALIGNMENT, TIES, AND BENCHMARKS
12	PLAN SHEET
13	REMOVAL SHEET
14-15	TRAFFIC CONROL
16	DETOUR ROUTE
17	INTERSECTION DETAIL
18	PAVEMENT MARKING
19-20	TRAFFIC SIGNAL DETAILS
21-28	CROSS SECTIONS

GENERAL NOTES

1. THE CONTRACTOR SHALL VERIFY ALL DIMENSIONS AND CONDITIONS IN THE FIELD PRIOR TO CONSTRUCTION AND ORDERING MATERIALS.
2. THE PROPOSED PAVEMENT MARKING SHALL MATCH THE LOCATIONS OF THE EXISTING PAVEMENT MARKING, AS DIRECTED BY THE ENGINEER.
3. ILLINOIS STATE LAW REQUIRES A 48-HOUR NOTICE BE GIVEN TO ALL UTILITIES BEFORE DIGGING. FIELD MARKING OF FACILITIES MAY BE OBTAINED BY CONTACTING J.U.L.I.E. OR FOR NON-MEMBERS, THE UTILITY COMPANY DIRECTLY. AGENCIES KNOWN TO HAVE FACILITIES WITHIN THE PROJECT AREA ARE AS FOLLOWS:

UTILITY
•AMEREN ILLINOIS
•AT&T ILLINOIS
•CITY OF GRANITE CITY
•ILLINOIS AMERICAN WATER COMPANY
•LEVEL 3 COMMUNICATIONS, LLC
•MADISON COUNTY SPECIAL SERVICE AREA #1

MEMBERS OF J.U.L.I.E. CALL TOLL FREE (800) 892-0123 OR 811 AND ARE INDICATED BY *. NON-J.U.L.I.E. MEMBERS MUST BE NOTIFIED INDIVIDUALLY.

4. THE DEPARTMENT STRONGLY ENCOURAGES THE PRIME CONTRACTOR AND THEIR APPROVED SUB-CONTRACTORS TO HIRE MINORITY, WOMEN AND DISADVANTAGED INDIVIDUALS FROM ITS FEDERALLY FUNDED HIGHWAY CONSTRUCTION CAREERS TRAINING PROGRAM (HCCTP) TO HELP MEET WORK FORCE AND TRAINEE GOALS. THIS PROGRAM IS TRAINING MINORITIES, WOMEN AND DISADVANTAGED INDIVIDUALS IN HIGHWAY CONSTRUCTION-RELATED SKILLS, E.G., MATH FOR THE TRADES, JOB READINESS, TECHNICAL SKILLS COURSE WORK (CARPENTRY, CONCRETE FLATWORK, BLUEPRINT READING, SITE PLANS, SITE WORK, TOOLS USE, ETC.) AND OSHA 10 HOUR CERTIFICATION, TO PREPARE THEM FOR A CAREER IN THE HIGHWAY CONSTRUCTION TRADES. GRADUATES ARE WELL-TRAINED AND READY TO BECOME PRODUCTIVE ENTRY-LEVEL CONSTRUCTION WORKERS. CONTACT THE DISTRICT 8 EEO OFFICE AT 618-346-3360 AND/OR THE HCCTP COORDINATOR AT 618-874-6528 TO LEARN MORE ABOUT THE PROGRAM AND FOR ASSISTANCE IN MEETING WORK FORCE AND TRAINEE GOALS.
5. ALL EXISTING PIPE UNDERDRAINS THAT ARE ENCOUNTERED DURING PAVEMENT REMOVAL (SPECIAL) SHALL BE REMOVED. PIPE UNDERDRAIN REMOVAL WILL BE INCLUDED IN PAVEMENT REMOVAL (SPECIAL).
6. HIGH EARLY STRENGTH CONCRETE MIX SHALL BE ALLOWED FOR CONSTRUCTION ON THIS PROJECT AS NEEDED.

STANDARDS

000001-06	ABBREVIATIONS, SYMBOLS AND PATTERNS
001001-02	REINFORCEMENT BARS, AREAS, WEIGHTS AND SPACING
001006	DECIMAL OF AN INCH AND OF A FOOT
420101-06	24' (7.2 M) JOINTED PCC PAVEMENT
420106-06	36' (10.8 M) JOINTED PCC PAVEMENT
482006-03	HMA SHOULDER ADJACENT TO RIGID PAVEMENT
701422-10	LANE CLOSURE, MULTILANE, FOR SPEEDS > 45 MPH TO 55 MPH
701426-09	LANE CLOSURE, MULTILANE, INTERMITTENT OR MOVING OPER., > 45 MPH
701428-01	TRAFFIC CONTROL SETUP AND REMOVAL FREEWAY / EXPRESSWAY
701701-10	URBAN LANE CLOSURE, MULTILANE INTERSECTION
701901-07	TRAFFIC CONTROL DEVICES
780001-05	TYPICAL PAVEMENT MARKINGS
781001-04	TYPICAL APPLICATION RAISED REFLECTIVE PAVEMENT MARKERS
814001-03	HANDHOLES
886001-01	DETECTOR LOOP INSTALLATIONS
886006-01	TYPICAL LAYOUT FOR DETECTION LOOPS
BLR 21-9	TYPICAL APPLICATION OF TRAFFIC CONTROL DEVICES FOR CONSTRUCTION ON RURAL LOCAL HIGHWAYS

COMMITMENTS

NONE

ROUTE	FAP 2 (IL 3)
SECTION	(101,102)R-5
COUNTY	MADISON
CONTRACT	76L41

ADT (CONSTR. YEAR)	15000
MU %	12.3
SU %	6.2
20 YR ESAL'S	10.98

MIX DESIGN TABLE			
MIXTURE USE	SHOULDERS ≥ 2.25"	SHOULDERS < 2.25"	SURFACE
AC/PG	PG 64-22	PG 64 - 22	PG 64 - 22
RAP % (MAX)	SEE SPECIAL PROVISION	SEE SPECIAL PROVISION	SEE SPECIAL PROVISION
DESIGN AIR VOIDS	4.0% @ Ndes=30	4.0% @ Ndes=30	4.0% @ Ndes=70
MIX COMPOSITION (GRADATION)	IL 19.0 L	IL 9.5 L	IL 9.5
FRICITION AGG			MIXUTRE "D"
QUALITY MGMT PROGRAM	QC / QA	QC / QA	QC / QA

PLAN QUANTITIES FOR BITUMINOUS CONCRETE SURFACE COURSE ITEMS ARE CALCULATED USING A UNIT WEIGHT OF 112 LB/SQ YD/IN

MODEL: Default
FILE: \\nhdpc-pw\p1\08\B&E\BID\ITEC\Illinois\gov\FWIDOT\Documents\BIDOT_Offices\Director\B\Projects\0876L41\ICAD\DATA\CAD\Sheet\0876L41.rvt-ggencore.dgn

USER NAME = schweizerja	DESIGNED - JS	REVISED -
	DRAWN - JS	REVISED -
PLOT SCALE = 100.0000' / in.	CHECKED - DM	REVISED -
PLOT DATE = 8/10/2018	DATE -	REVISED -

**STATE OF ILLINOIS
DEPARTMENT OF TRANSPORTATION**

**INDEX OF SHEETS, GENERAL NOTES,
HIGHWAY STANDARDS, AND COMMITMENTS**

SCALE: SHEET 1 OF 1 SHEETS STA. TO STA.

F.A.P. RTE.	SECTION	COUNTY	TOTAL SHEETS	SHEET NO.
2	(101,102)R-5	MADISON	28	2
				CONTRACT NO. 76L41
				ILLINOIS FED. AID PROJECT NHPP-VPCQ(318)

URBAN
80% FED
20% STATE

CONSTR. CODE
MADISON
ROADWAY
0004
URBAN

CODE NO.	ITEM	UNIT	TOTAL QUANTITY	
* 80300100	LOCATING UNDERGROUND CABLE	FOOT	70	70
* 88600600	DETECTOR LOOP REPLACEMENT	FOOT	2088	2088
89502378	REBUILD EXISTING HANDHOLE TO HEAVY-DUTY HANDHOLE	EACH	1	1
X4404400	PAVEMENT REMOVAL (SPECIAL)	SQ YD	11352	11352
X6015000	REMOVE CONCRETE HEADWALLS FOR PIPE DRAINS	EACH	6	6
X7010216	TRAFFIC CONTROL AND PROTECTION, (SPECIAL)	L SUM	1	1
X7010222	TRAFFIC CONTROL AND PROTECTION, STANDARD BLR 21 (SPECIAL)	L SUM	1	1
X7015005	CHANGEABLE MESSAGE SIGN	CAL DA	154	154
X7030005	TEMPORARY PAVEMENT MARKING REMOVAL	SQ FT	250	250
Z0013798	CONSTRUCTION LAYOUT	L SUM	1	1
Z0016702	DETOUR SIGNING	L SUM	1	1
Z0028415	GEOTECHNICAL REINFORCEMENT	SQ YD	11352	11352

* SPECIALTY ITEM

MODEL: Default
FILE: \\nas01c.pva\illinois\BID\NTEC\Illinois\gov\PI\DOT\Documents\DOT Office\BID\refct 8\Projects\0876L41\CAD\data\CAD\sheet\0876L41.rft-500.dgn

USER NAME = schweizerja	DESIGNED - JS	REVISED -
	DRAWN - JS	REVISED -
PLOT SCALE = 100.0000 ' / in.	CHECKED - DM	REVISED -
PLOT DATE = 8/10/2018	DATE -	REVISED -

STATE OF ILLINOIS
DEPARTMENT OF TRANSPORTATION

SUMMARY OF QUANTITIES

SCALE: SHEET 2 OF 2 SHEETS STA. TO STA.

F.A.P. RTE.	SECTION	COUNTY	TOTAL SHEETS	SHEET NO.
2	(101,102)R-5	MADISON	28	3
CONTRACT NO. 76L41			ILLINOIS FED. AID PROJECT NHPP-VPCQ(318)	

REV. - MS

PAVEMENT SCHEDULE										
LOCATION			LENGTH	PCC PAVEMENT 10 1/2" (JOINTED)	STABILIZED SUBBASE 4"	AGG. BASE COURSE, TYPE A 12"	PROTECTIVE COAT	GEOTECHNICAL REINFORCEMENT	REMARKS	
STA.	TO	STA.	(FT)	SQ YD.	SQ YD	SQ YD	SQ YD	SQ YD		
1488+01.30	TO	1503+01.30	1500.00	4384.62	4384.62	4384.62	4384.62	4384.62	NB MAINLINE	
1488+01.30	TO	1503+01.30	1500.00	4278.89	4278.89	4278.89	4278.89	4278.89	SB MAINLINE	
1494+49.55	TO	1496+57.82	208.27	552.70	552.70	552.70	552.70	552.70	INTERSECTION	
1488+01.30	TO	1494+99.88	698.58	999.93	999.93	999.93	999.93	999.93	SB RIGHT TURN LANE	
1490+05.33	TO	1494+86.54	481.21	494.67	494.67	494.67	494.67	494.67	SB LEFT TURN LANE	
1496+08.93	TO	1501+74.29	565.36	640.63	640.63	640.63	640.63	640.63	NB LEFT TURN LANE	
TOTALS				11352	11352	11352	11352	11352		

TRAFFIC CONTROL SCHEDULE				
	TRAFFIC CONTROL AND PROTECTION STANDARD 701422	TRAFFIC CONTROL AND PROTECTION STANDARD 701701	TRAFFIC CONTROL AND PROTECTION, STANDARD B.L.R. 21 (SPECIAL)	TRAFFIC CONTROL AND PROTECTION (SPECIAL)
UNIT	L. SUM	L. SUM	L. SUM	L. SUM
QUANTITY	1	1	1	1
TOTAL	1.00	1.00	1.00	1.00

PAVEMENT REMOVAL AND SHOULDERS SCHEDULE															
LOCATION			LENGTH	PAVEMENT REMOVAL (SPECIAL)	HOT-MIX ASPHALT SURF REM. 1.5"	HOT-MIX ASPHALT SURFACE REMOVAL 2.5"	PAVED SHOULDER REMOVAL	SUBBASE GRANULAR MATERIAL, TYPE C, 4"	AGGREGATE WEDGE SHOULDERS, TYPE B	HOT-MIX ASPHALT SHOULDERS, 1.5"	HOT-MIX ASPHALT SURFACE, MIX "D" 2.5"	HOT-MIX ASPHALT SHOULDERS, 8"	BITUMINOUS MATERIAL (TACK COAT)	REMOVE CONCRETE HEADWALLS FOR PIPE DRAINS	REMARKS
STA.	TO	STA.	(FT)	SQ YD	SQ YD	SQ YD	SQ YD	TON	TON	TON	TON	SQ YD	POUND	EACH	
1488+01.30	TO	1503+01.30	1500.00	4384.62										3.00	NB MAINLINE
1488+01.30	TO	1494+49.55	648.25		482.00				6.00	40.49			216.90		NB MEDIAN SHOULDER
1488+01.30	TO	1493+96.64	595.34		550.69				5.51	46.26			247.81		NB OUTSIDE SHOULDER
1493+96.64	TO	1495+70.99	174.35			169.14					23.68		114.17		NB INTERSECTION / SHOULDER
1495+70.99	TO	1501+25.62	554.63		528.31				5.14	44.38			237.74		NB OUTSIDE SHOULDER
1496+08.93	TO	1501+74.29	565.36	640.63			193.30	42.91	31.41			193.30	565.41		NB LEFT TURN LANE
1501+74.29	TO	1503+01.30	127.01		84.33				1.18	7.08			37.95		NB MEDIAN SHOULDER
1494+49.55	TO	1496+57.82	208.27	552.70											INTERSECTION
1495+84.25	TO	1496+57.82	73.57				20.05	8.16	4.09			36.74	107.45		SOUTH MEDIAN NOSE
1488+01.30	TO	1503+01.30	1500.00	4278.89										3.00	SB MAINLINE
1488+01.30	TO	1490+05.33	204.03		135.93				1.89	11.42			61.17		SB MEDIAN SHOULDER
1488+01.30	TO	1494+99.88	698.58	999.93											SB RIGHT TURN LANE
1488+01.30	TO	1494+59.80	658.50				289.71	64.31	36.58			289.71	847.39		SB OUTSIDE SHOULDER
1490+05.33	TO	1494+86.54	481.21	494.67	494.67				4.46	41.55			222.60		SB LEFT TURN LANE (LTL)
1490+05.33	TO	1494+98.30	492.97				188.17	48.93	27.39			220.39	644.64		SB LTL & N. MEDIAN NOSE
1494+99.88	TO	1496+32.63	132.75			141.11					19.76		95.25		SB INTERSECTION / SHOULDER
1496+32.63	TO	1503+01.30	668.67		663.98				6.19	55.77			298.79		SB OUTSIDE SHOULDER
1496+57.82	TO	1503+01.30	643.48		439.20				5.96	36.89			197.64		SB MEDIAN SHOULDER
TOTALS				11352	3380	311	692	165	136	284	44	741	3895	6	

PAVEMENT MARKING SCHEDULE														
LOCATION			LENGTH	POLYUREA PAVEMENT MARKING						PAVEMENT MARKING TAPE, TYPE III, 4"	TEMPORARY PAVEMENT MARKING REMOVAL	PAVEMENT MARKING BLACKOUT TAPE, 5"	RAISED REFLECTIVE PAVEMENT MARKERS	REMARKS
				LINE - 4"					LETTERS & SYMBOLS					
				SOLID YELLOW	SOLID WHITE	10' SKIP-DASH WHITE	2' - 6' SKIP-DASH WHITE	STOP BARS						
STA.	TO	STA.	FOOT	FOOT	FOOT	FOOT	FOOT	SQ FT	FOOT	SQ FT	FOOT	EACH		
1488+01.30	TO	1503+01.30	1500.00	812.00	1304	350		24				19	NB MAINLINE	
1488+01.30	TO	1503+01.30	1500.00	948	633	350		24				19	SB MAINLINE	
1488+01.30	TO	1494+76.00	674.70		1083		78		46.8			11	SB RIGHT TURN LANE	
1490+05.26	TO	1494+87.71	482.45	466	254		52	15	46.8			7	SB LEFT TURN LANE	
1496+07.83	TO	1501+74.27	566.44	602	253		86	15	46.8			7	NB LEFT TURN LANE	
1505+50.00	TO	1513+00.00	750.00							750	250	190	NB TC&P (SPECIAL)	
SUB-TOTALS				2828	3527	700	216	78	140	750	250	190	63	
TOTAL					7271			78	140	750	250	190	63	

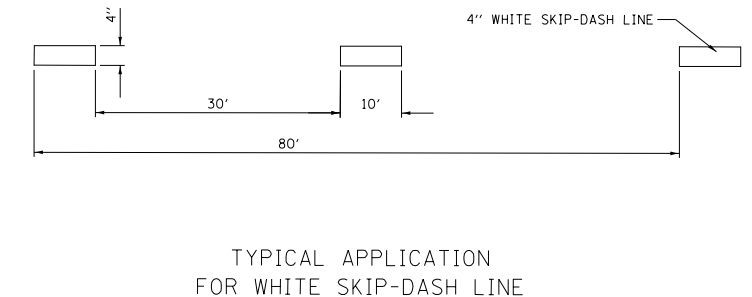
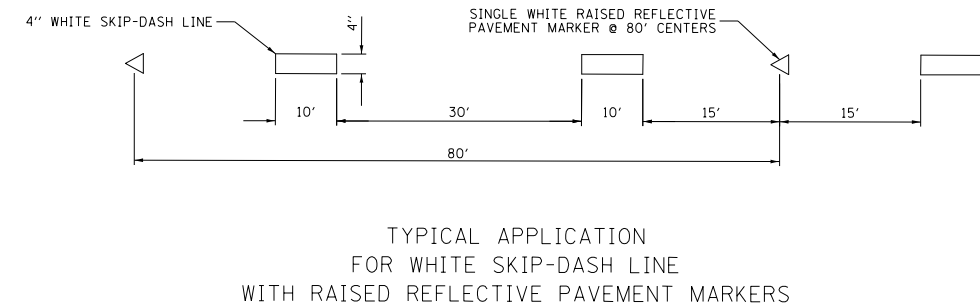
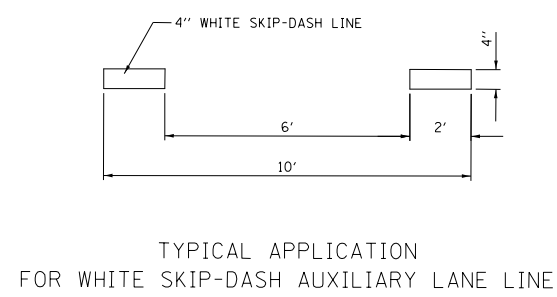
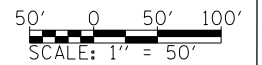
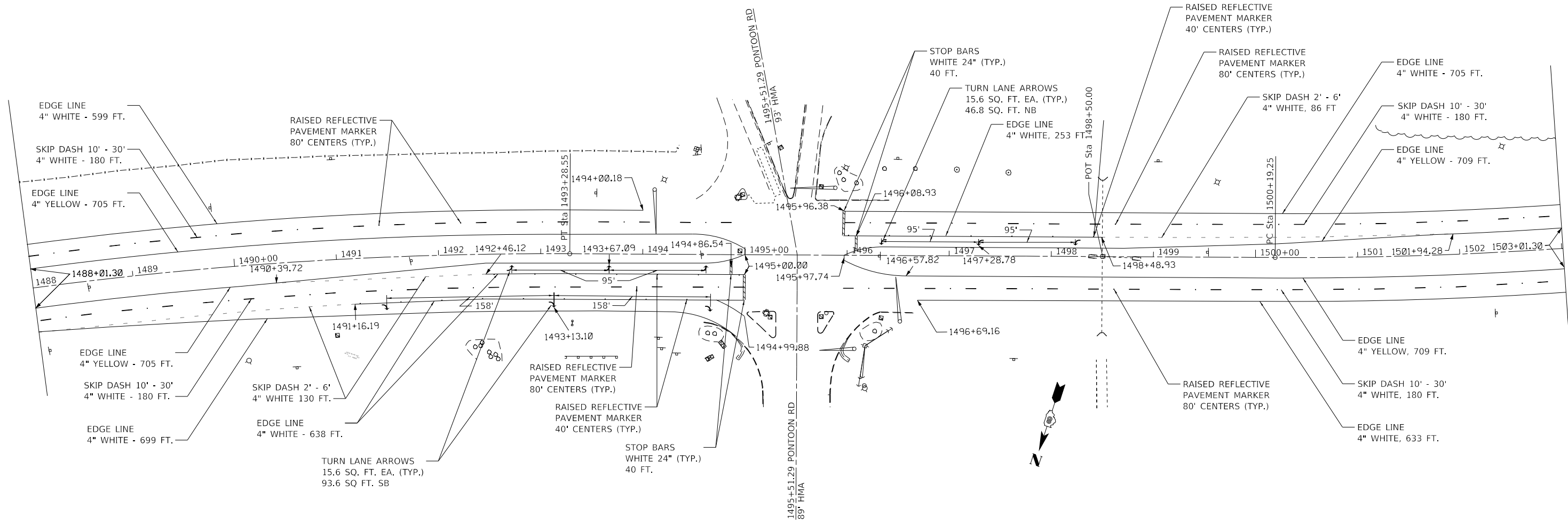
MODEL: \\MODELNAME
 FILE: \\FILEPATH
 PROJECT: \\PROJECTNAME
 DRAWING: \\DRAWINGNAME
 SHEET: \\SHEETNAME

USER NAME = schweizerja	DESIGNED - JS	REVISED - _____
	DRAWN - JS	REVISED - _____
PLOT SCALE = 100,0000' / in.	CHECKED - DM	REVISED - _____
PLOT DATE = 10/10/2018	DATE - _____	REVISED - _____

**STATE OF ILLINOIS
DEPARTMENT OF TRANSPORTATION**

SCHEDULE			
SCALE:	SHEET 1	OF 1	SHEETS
	STA. _____	TO STA. _____	

F.A.P. RTE.	SECTION	COUNTY	TOTAL SHEETS	SHEET NO.
2	(101,102)R-5	MADISON	28	9
CONTRACT NO. 76L41				
ILLINOIS FED. AID PROJECT NHPP-VPCQ(318)				



MODEL: Default
 FILE NAME: p:\v\1108\HED\DMT\EG\illinois.gov\FWIDOT\Documents\IDOT_Offices\District_8\Project\0376L41\CADData\CADsheets\0376L41-shl-pmk.dgn

USER NAME = schwetzerja	DESIGNED - JS	REVISED -
DRAWN - JS	REVISOR -	
PLOT SCALE = 100.2976' / in.	CHECKED - DM	REVISOR -
PLOT DATE = 8/10/2018	DATE -	REVISOR -

**STATE OF ILLINOIS
DEPARTMENT OF TRANSPORTATION**

PAVEMENT MARKING

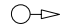
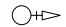



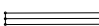

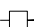
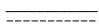


SCALE: 1"=50' SHEET 1 OF 1 SHEETS STA. 1488+01.30 TO STA. 1503+01.30

F.A.P. RTE.	SECTION	COUNTY	TOTAL SHEETS	SHEET NO.
2	(101,102)R-5	MADISON	28	18
CONTRACT NO. 76L41				
ILLINOIS FED. AID PROJECT NHPP-VPCQ(318)				

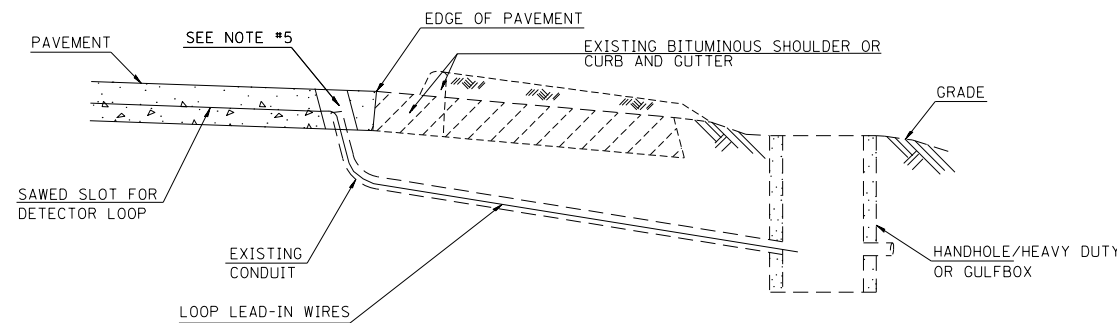
NOTES:

SEE TABLE "DETECTOR LOOP REQUIREMENTS AND CALCULATIONS"
FOR LOOP SIZE AND CALCULATED NUMBER OF TURNS.
SEE "DETAIL A" FOR INSTALLING DETECTOR LOOP WIRES
IN EXISTING CONDUITS.

TRAFFIC SIGNALS LEGEND

-  EXISTING SIGNAL POST
-  EXISTING SIGNAL POST WITH BACKPLATE
-  EXISTING TRAFFIC SIGNAL MAST ARM
-  EXISTING HANDHOLE
-  EXISTING DOUBLE HANDHOLE
-  EXISTING DETECTOR LOOP
-  EXISTING CONTROLLER
-  EXISTING SERVICE INSTALLATION
-  EXISTING CONDUIT
-  PROPOSED HEAVY DUTY HANDHOLE
-  PROPOSED DETECTOR LOOP

SCHEDULE OF QUANTITIES			TOTAL QUANTITIES	IL 3 & PONTOON RD.
CODE NO	ITEM	UNIT		
80300100	LOCATING UNDERGROUND CABLE	FOOT	70	70
88600600	DETECTOR LOOP REPLACEMENT	FOOT	2088	2088
89502378	REBUILD EXISTING HANDHOLE TO HEAVY-DUTY HANDHOLE	EACH	1	1

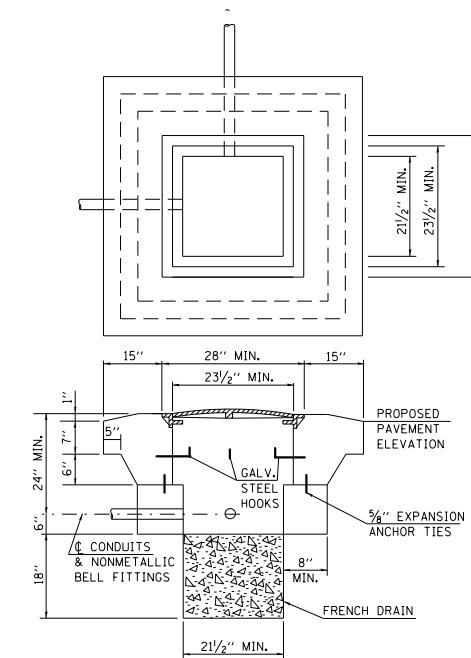


DETAIL A
(NO SCALE)

INSTALLING DETECTOR LOOP WIRES IN EXISTING CONDUIT

1. DRILL OUT PAVEMENT SEALANT AND CLEAN EXISTING CONDUIT.
2. REMOVE EXISTING DETECTOR LOOP WIRES TO HANDHOLE/HEAVY DUTY OR GULFBOX, AS SPECIFIED.
3. INSTALL NEW LOOP LEAD-IN WIRES IN EXISTING CONDUIT.
4. SPLICE NEW DETECTOR LOOP WIRES TO EXISTING LOOP LEAD-IN CABLE IN HANDHOLE/HEAVY DUTY OR GULFBOX, AS SPECIFIED.
5. FILL HOLE WITH APPROVED SEALER. PREVENT SEALER FROM ENTERING INTO CONDUIT.
6. LOCATING UNDERGROUND CABLE WILL BE PAID FOR SEPARATELY.

NOT A PAY ITEM. THE COST OF THIS WORK SHALL BE INCLUDED IN THE PAY ITEM "DETECTOR LOOP REPLACEMENT"



DETAIL B
REBUILD TO HEAVY DUTY HANDHOLE

- NOTES:**
1. USE 3/8" Ø EXPANSION ANCHOR TIES AT 6" CENTERS, 20 TOTAL. COST OF MATERIAL AND LABOR WILL BE INCIDENTAL TO REBUILD HEAVY DUTY HANDHOLE.
 2. CANNOT EXCAVATE BELOW TOP OF EXISTING CONDUIT UNLESS OTHERWISE SPECIFIED TO BE REMOVED.
 3. THE CONTRACTOR SHALL BE RESPONSIBLE FOR ANY DAMAGE THAT MAY OCCUR TO EXISTING CABLES.
 4. THE MINIMUM WEIGHT OF THE FRAME AND COVER SHALL BE 260 LBS.
 5. THIS DETAIL IS TO BE USED IN CONJUNCTION WITH STANDARD 814001. GENERAL NOTES AND THE SPECIAL PROVISION REBUILD EXISTING HANDHOLE TO HEAVY DUTY HANDHOLE.

MODEL: Default
FILE: \\nrcs\p\110108\BID\NTEC\Illinois\gov\PIV\DOT\Documents\DOT Office\BIDirect\B\Projects\0876141\CADD\data\CAD\here\89502378.dgn

USER NAME = schweizerja	DESIGNED - JB	REVISED -
PLOT SCALE = 100,0000' / in.	DRAWN - JB	REVISED -
PLOT DATE = 8/10/2018	CHECKED -	REVISED -
	DATE -	REVISED -

**STATE OF ILLINOIS
DEPARTMENT OF TRANSPORTATION**

**DETECTOR LOOP REPLACEMENT
GENERAL NOTES, SCHEDULE OF QUANTITIES,
DETAIL AND LEGEND**

SCALE: SHEET 1 OF 2 SHEETS STA. TO STA.

F.A.P. RTE.	SECTION	COUNTY	TOTAL SHEETS	SHEET NO.
2	(101, 102)R-5	MADISON	28	19
CONTRACT NO. 76L41				
ILLINOIS FED. AID PROJECT NHPP-VPCQ(318)				

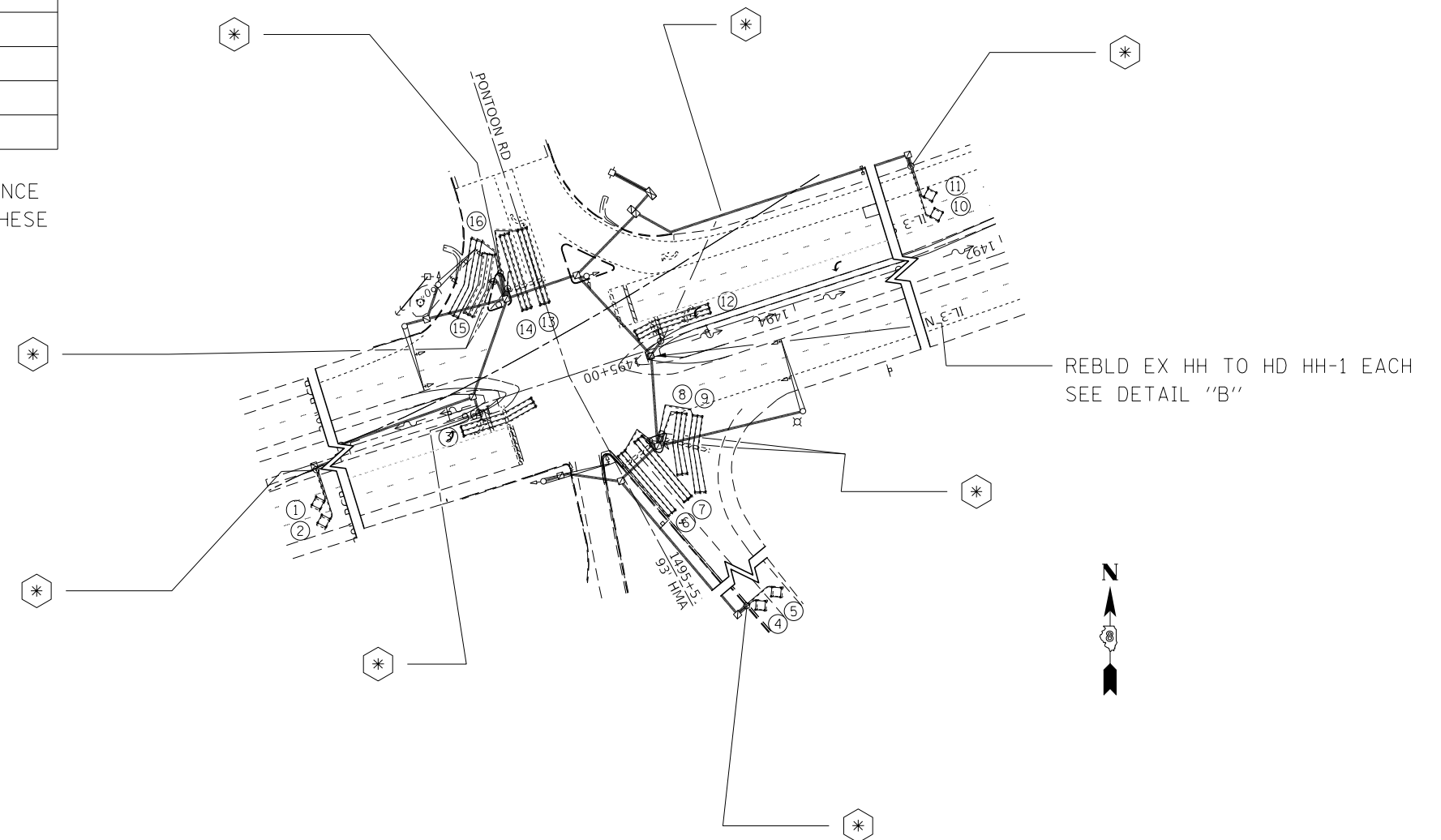
DETECTOR LOOP REQUIREMENTS AND CALCULATIONS

LOOP#	PHASE # (Φ)	LOOP SIZE (FT. X FT.)	REQUIRED # OF TURNS	CALCULATED INDUCTANCE MICROHENRIES (μH)	CALCULATED RESISTANCE OHMS (Ω)
1. EB CCO	6	6' x 6'	6	260	0.5
2. EB CCO	6	6' x 6'	6	263	0.5
3. EBLT CD	1	6' x 50'(Q)	3-6-3	786	1.6
4. NB CCO	3	6' x 6'	6	257	0.4
5. NB CCO	3	6' x 6'	6	260	0.5
6. NB THRU CD	3	6' x 50'(Q)	3-6-3	792	1.7
7. NB THRU CD	3	6' x 50'(Q)	3-6-3	787	1.6
8. NBRT CD	3	6' x 50'(Q)	3-6-3	790	1.7
9. NBRT CD	3	6' x 50'(Q)	3-6-3	795	1.8
10. WB CCO	2	6' x 6'	6	263	0.5
11. WB CCO	2	6' x 6'	6	260	0.5
12. WBLT CD	5	6' x 50'(Q)	3-6-3	787	1.6
13. WB THRU CD	4	6' x 50'(Q)	3-6-3	796	1.8
14. SB THRU CD	4	6' x 50'(Q)	3-6-3	789	1.7
15. SBRT CD	4	6' x 50'(Q)	3-6-3	786	1.6
16. SBRT CD	4	6' x 50'(Q)	3-6-3	792	1.7

THE ABOVE VALUES ARE CALCULATED OF COMBINED LOOP AND LEAD-IN INDUCTANCE AND RESISTANCE. ACTUAL MEASURED VALUES SHOULD BE WITHIN +/- 20% OF THESE VALUES.

Q=QUADRAPOLE

* =SEE DETAIL "A"



MODEL: Default
 FILE: \\nas01c.psu.edu\BID\NTEC\Illinois\gov\PIVDOT\Documents\DOT Office\BID\refct 8\Project\0876L41\CAD\data\CAD\sheet\0876L41.rvt-ct.dgn

USER NAME = schweizerja	DESIGNED - JB	REVISED -
DRAWN - JB	REVISIONS -	
PLOT SCALE = 100,0000' / in.	CHECKED -	REVISED -
PLOT DATE = 8/10/2018	DATE -	REVISED -

**STATE OF ILLINOIS
DEPARTMENT OF TRANSPORTATION**

**DETECTOR LOOP REPLACEMENT
GENERAL NOTES, SCHEDULE OF QUANTITIES,
DETAIL AND LEGEND**

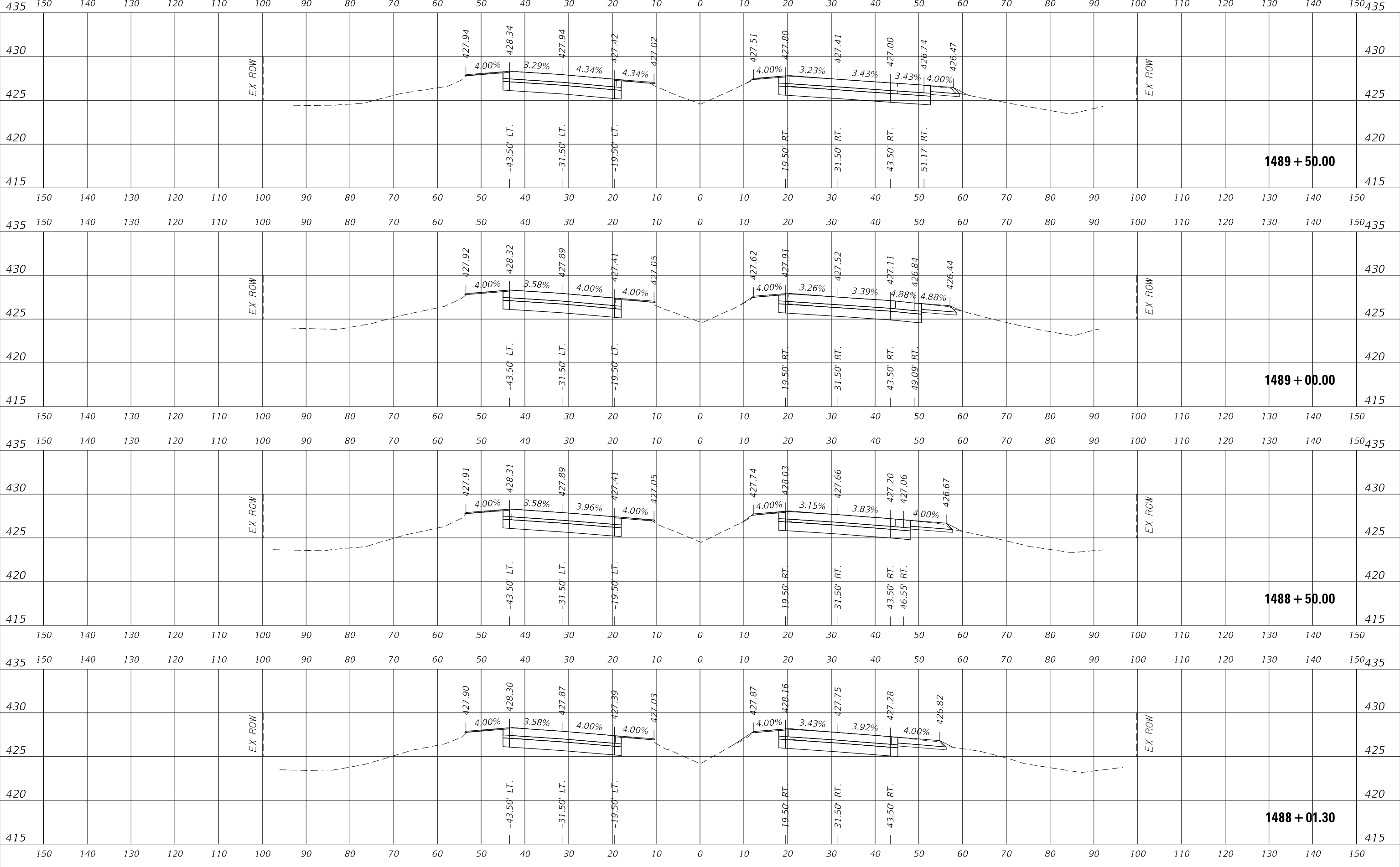
SCALE: SHEET 2 OF 2 SHEETS STA. TO STA.

F.A.P. RTE.	SECTION	COUNTY	TOTAL SHEETS	SHEET NO.
2	(101, 102)R-5	MADISON	28	20
CONTRACT NO. 76L41			ILLINOIS FED. AID PROJECT NHPP-VPCQ(318)	

FINAL SURVEY NO.	DATE
SURVEYED	MEMBER
PLOTTED	DATE
TEMPLATE	
AREAS CHECKED	

ORIGINAL SURVEY NO.	DATE
SURVEYED	MEMBER
PLOTTED	DATE
TEMPLATE	
AREAS CHECKED	

MODEL: ILS_100
 FILE NAME: D:\11101084\EBID\TEC\Illinois\pwr\pwid\Documents\DOT\Documents\DOT\Office\IDirect\B\Projects\0876141\ICAD\Date\Des\p10876141-Design.dgn



USER NAME = schweitzerja	DESIGNED - JS	REVISED -
	DRAWN - JS	REVISED -
PLOT SCALE = 20.0000' / in.	CHECKED - DM	REVISED -
PLOT DATE = 8/10/2018	DATE -	REVISED -

**STATE OF ILLINOIS
DEPARTMENT OF TRANSPORTATION**

CROSS SECTION

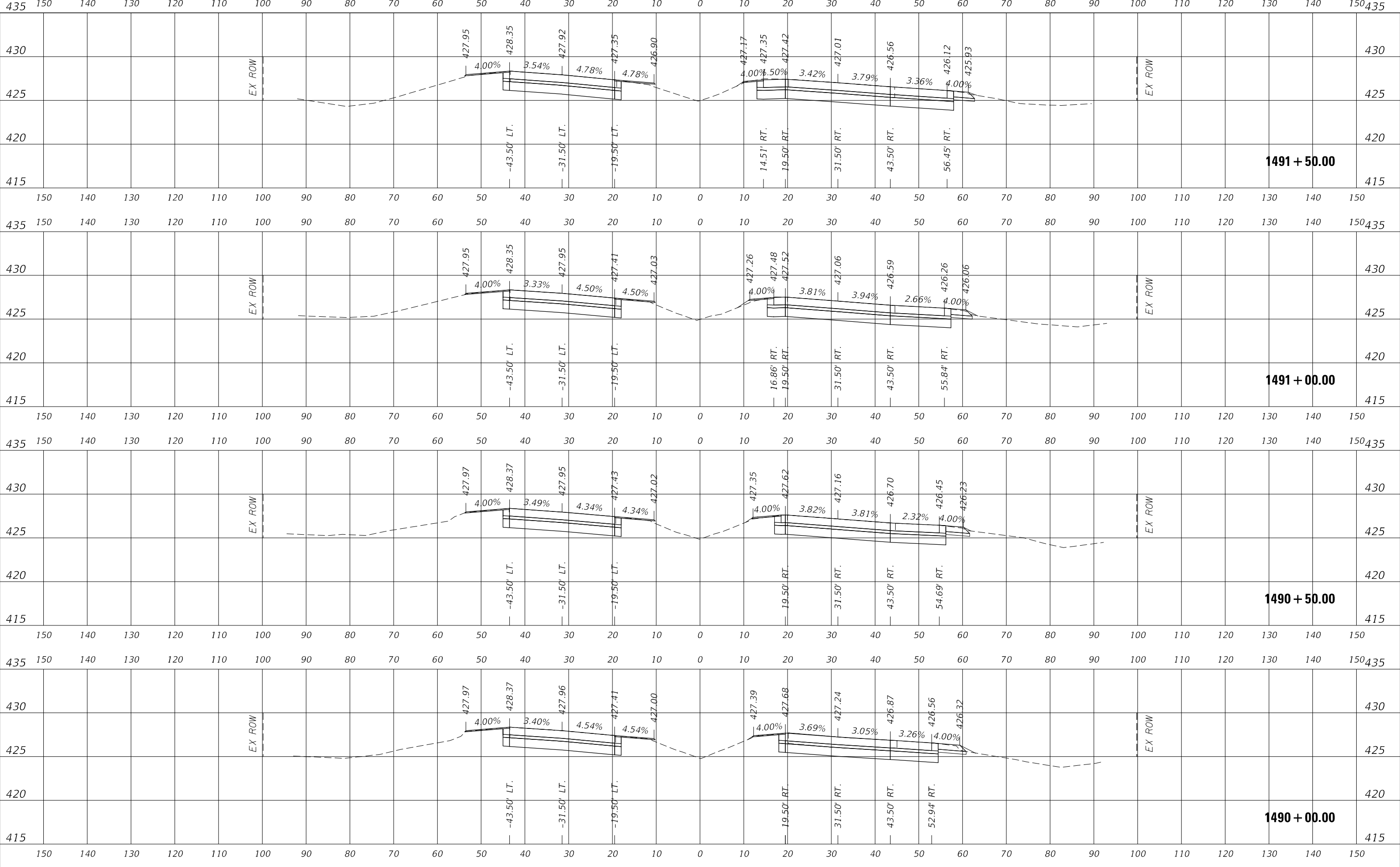
SCALE: SHEET 1 OF 8 SHEETS STA. 1488+01.30 TO STA. 1489+50.00

F.A.P. RTE. 2	SECTION (101, 102) R - 5	COUNTY MADISON	TOTAL SHEETS 28	SHEET NO. 21
CONTRACT NO. 76L41			ILLINOIS FED. AID PROJECT # NHPV-VPQ(318)	

FINAL SURVEY NO.	DATE
SURVEYED IDOT MEMBER'S DRAWING	REC-2012
PLOTTED TEMPLATE	
AREAS CHECKED	

ORIGINAL SURVEY NO.	DATE
SURVEYED IDOT MEMBER'S DRAWING	
PLOTTED TEMPLATE	
AREAS CHECKED	

MODEL: IL_3_100
 FILE NAME: dxw\1108\EBID\TCC\Illinois\pwp\WIDOT\Documents\DOT\Office\IDB\ETC\Projects\0276141\ICAD\Drawings\0876141-Design.dgn



USER NAME = schweitzerja	DESIGNED - JS	REVISED -
	DRAWN - JS	REVISED -
PLOT SCALE = 20.0000' / in.	CHECKED - DM	REVISED -
PLOT DATE = 8/10/2018	DATE -	REVISED -

**STATE OF ILLINOIS
DEPARTMENT OF TRANSPORTATION**

CROSS SECTION

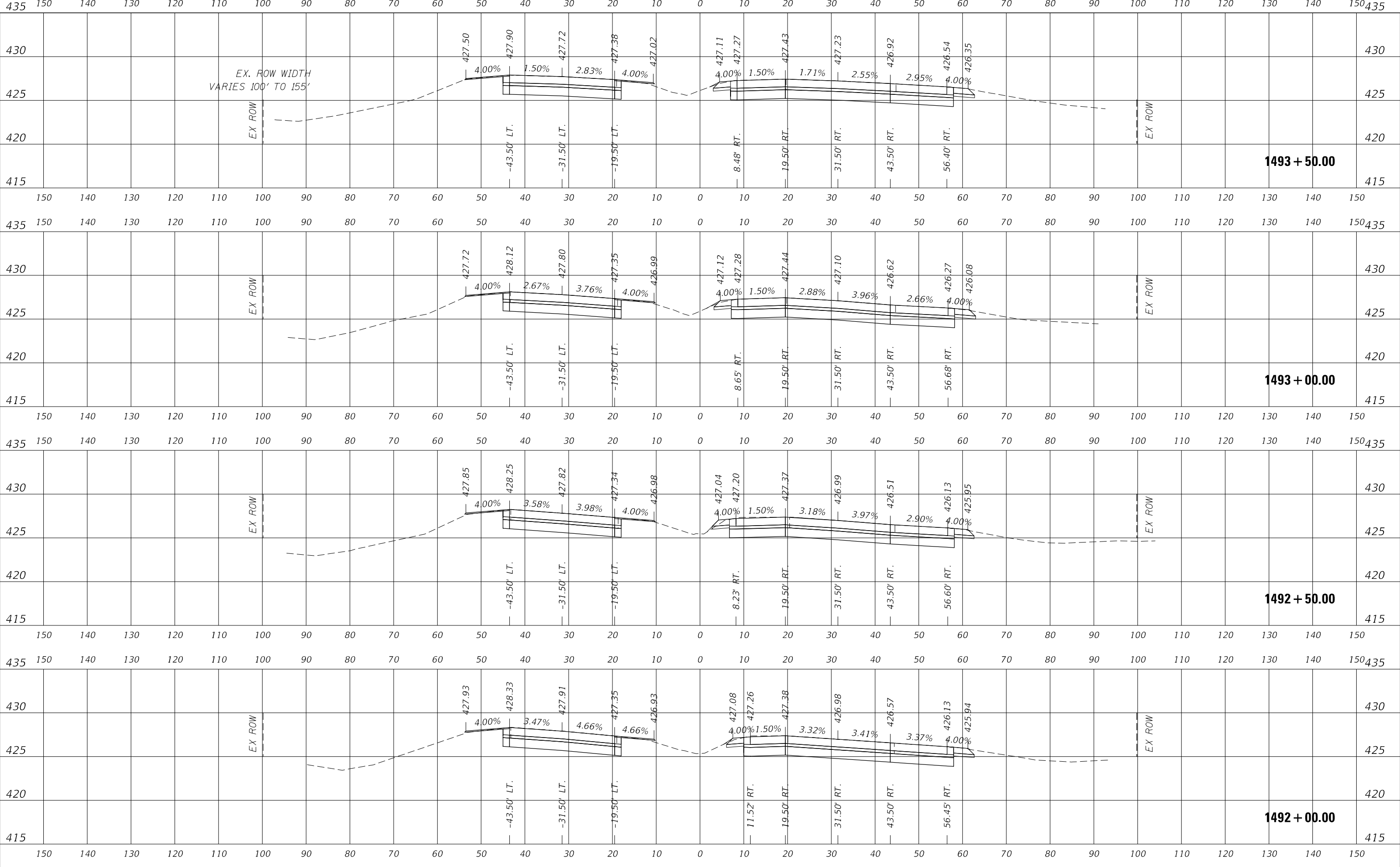
SCALE: SHEET 2 OF 8 SHEETS STA. 1490+00.00 TO STA. 1491+50.00

F.A.P. RTE.	SECTION	COUNTY	TOTAL SHEETS	SHEET NO.
2	(101, 102) R - 5	MADISON	28	22
CONTRACT NO. 76L41			ILLINOIS FED. AID PROJECT # NHPV-VPCQ(318)	

FINAL SURVEY NO.	SURVEYED IDOT NO.	BY	DATE
NOTE BOOK NO.	PLOTTED TEMPLATE AREAS CHECKED	MEMBER & DRAWING	REC-2012

ORIGINAL SURVEY NO.	SURVEYED IDOT NO.	BY	DATE
NOTE BOOK NO.	PLOTTED TEMPLATE AREAS CHECKED		

MODEL: IL_3_100
 FILE NAME: dxw\1004\EBID\TCC\Illinois\pwp\1004\11\1004\08\76L41\1004\08\76L41-Design.dgn



USER NAME = schweitzerja	DESIGNED - JS	REVISED -
	DRAWN - JS	REVISED -
PLOT SCALE = 20.0000 ' / in.	CHECKED - DM	REVISED -
PLOT DATE = 8/10/2018	DATE -	REVISED -

**STATE OF ILLINOIS
DEPARTMENT OF TRANSPORTATION**

CROSS SECTION

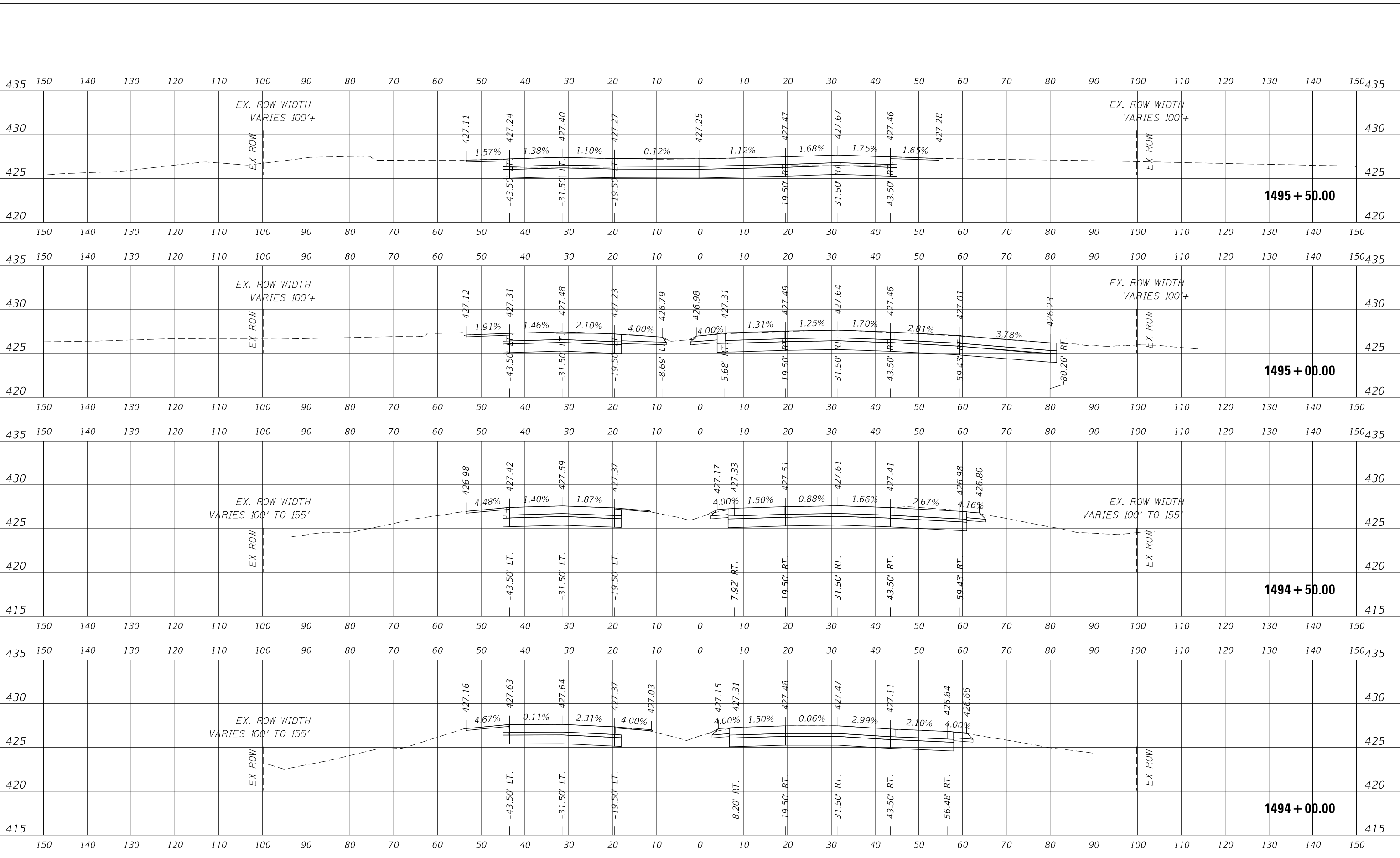
SCALE: SHEET 3 OF 8 SHEETS STA. 1492+00.00 TO STA. 1493+50.00

F.A.P. RTE. 2	SECTION (101, 102) R - 5	COUNTY MADISON	TOTAL SHEETS 28	SHEET NO. 23
CONTRACT NO. 76L41			ILLINOIS FED. AID PROJECT # NHPV-VPCQ(318)	

FINAL SURVEY	DATE
SURVEYED	MEMBER, L. DOWNING
PLOTTED	
TEMPLATE	
NOTE BOOK	
AREAS CHECKED	
NO.	

ORIGINAL SURVEY	DATE
SURVEYED	
PLOTTED	
TEMPLATE	
NOTE BOOK	
AREAS CHECKED	
NO.	

MODEL: ILS_100
FILE NAME: d:\xll\l100\IBID\TCE\Illinois\pwp\p100\Documents\DOT\Office\IDirect\B\Projects\076141\ICAD\Date\Date\p100\76141-Design.dgn



USER NAME = schweitzerja	DESIGNED - JS	REVISED -
	DRAWN - JS	REVISED -
PLOT SCALE = 20.0000' / in.	CHECKED - DM	REVISED -
PLOT DATE = 8/10/2018	DATE -	REVISED -

**STATE OF ILLINOIS
DEPARTMENT OF TRANSPORTATION**

CROSS SECTION			
SCALE:	SHEET 4	OF 8	SHEETS
		STA. 1494+00.00 TO STA. 1495+50.00	

F.A.P. RTE.	SECTION	COUNTY	TOTAL SHEETS	SHEET NO.
2	(101, 102) R - 5	MADISON	28	24
			CONTRACT NO. 76L41	
			ILLINOIS FED. AID PROJECT # NHP-VPQC(318)	

