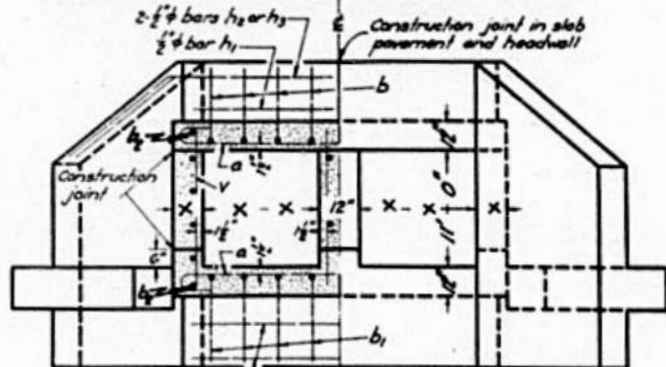
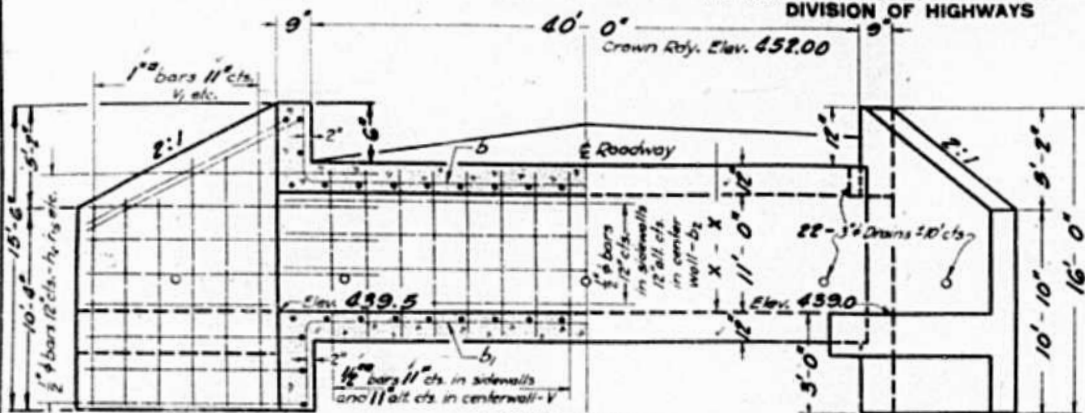


STATE OF ILLINOIS
DEPARTMENT OF PUBLIC WORKS & BUILDINGS
DIVISION OF HIGHWAYS

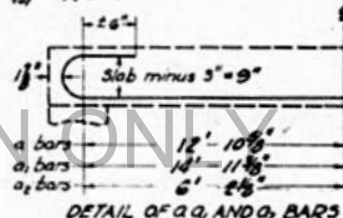
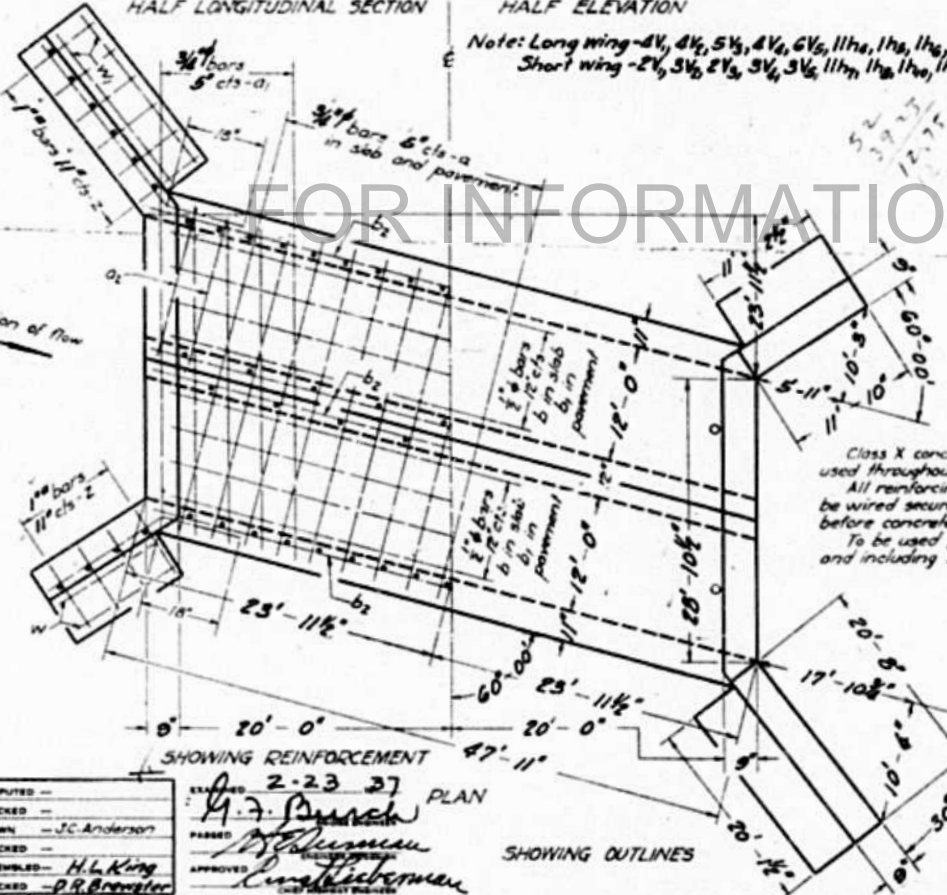
ROAD ISSUE ROUTE NO.	SECTION	COUNTY	TOTAL SHEETS	SHEET NO.
FA-150	7A	Clinton	53	50
FED. ROAD DIST. NO. 7		ILLINOIS	FED. AID PROJECT- 394-B	

SHEET NO. 1
OF 53

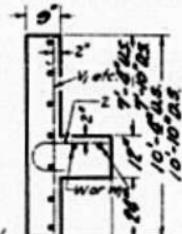


SIDE ELEVATION
HALF LONGITUDINAL SECTION
HALF ELEVATION
HALF SECTION

Note: Long wing - 4V₁, 4V₂, 5V₃, 4V₄, 6V₅, 11h₁, 1h₂, 1h₃, 1h₄, 1h₅, 23Z, 22V.
Short wing - 2V₁, 3V₂, 2V₃, 3V₄, 3V₅, 11h₁, 1h₂, 1h₃, 1h₄, 1h₅, 13Z, 2W.



DETAIL OF A, A1, AND A2 BARS



h _g	2	1/2"	9'-0"
h ₁₀	2	1/2"	7'-9"
h ₈	2	1/2"	8'-9"
h ₄	2	1/2"	5'-3"
h ₂	2	1/2"	3'-0"

BILL OF MATERIAL

Bars	Number	Size	Length
a	132	3/4"	29'-0"
a ₁	60	3/4"	33'-5"
a ₂	76	3/4"	15'-9"
b	72	1/2"	17'-9"
b ₁	72	1/2"	18'-9"
b ₂	74	1/2"	24'-0"
h ₁	2	1/2"	10'-6"
h	12	1/2"	15'-9"
h ₁	4	1/2"	14'-6"
h ₂	8	1/2"	14'-9"
h ₃	8	1/2"	18'-9"
h ₄	22	1/2"	22'-9"
h ₅	2	1/2"	17'-3"
h ₆	2	1/2"	13'-6"
h ₇	22	1/2"	13'-5"
v	134	1/2"	12'-6"
v ₁	12	1/2"	14'-6"
v ₂	14	1/2"	15'-6"
v ₃	14	1/2"	12'-6"
v ₄	10	1/2"	11'-6"
w	4	1/2"	11'-0"
w ₁	4	1/2"	20'-0"
z	72	1/2"	8'-0"
v ₅	18	1/2"	10'-6"

Class X concrete Cu Yds. 192.6
Reinforcing Steel Lbs. 22070

Class X concrete shall be used throughout.
All reinforcing steel shall be wired securely in place before concrete is poured.
To be used for shows up to and including 30" only.

STANDARD	COMPUTED —	EXAMINED —
	CHECKED —	APPROVED —
	DRAWN — J.C. Anderson	
SPECIAL	CHECKED —	
	ASSEMBLED — H.L. King	
	CHECKED — P.R. Brewster	
	IN CHARGE — H.L. King	

2-23-37
A. J. Bunch
P. R. Brewster
H. L. King

SHOWING OUTLINES

F.A. Route 100 Const. Sec. 7-A
Clinton County
Station 748+55