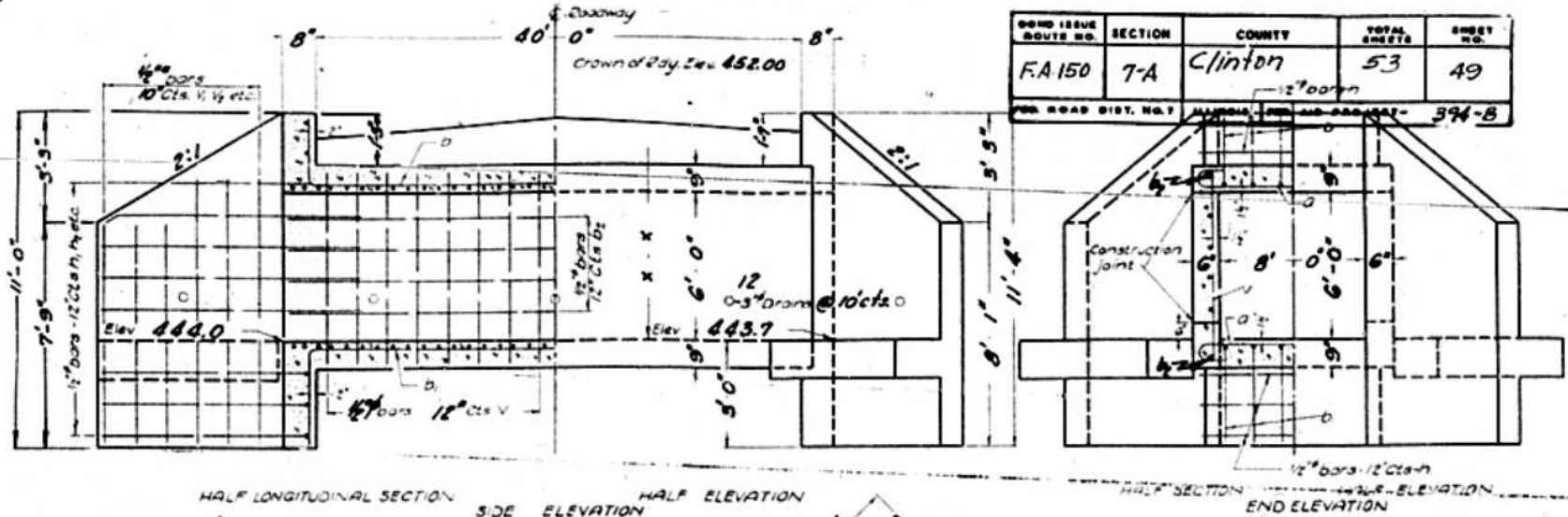


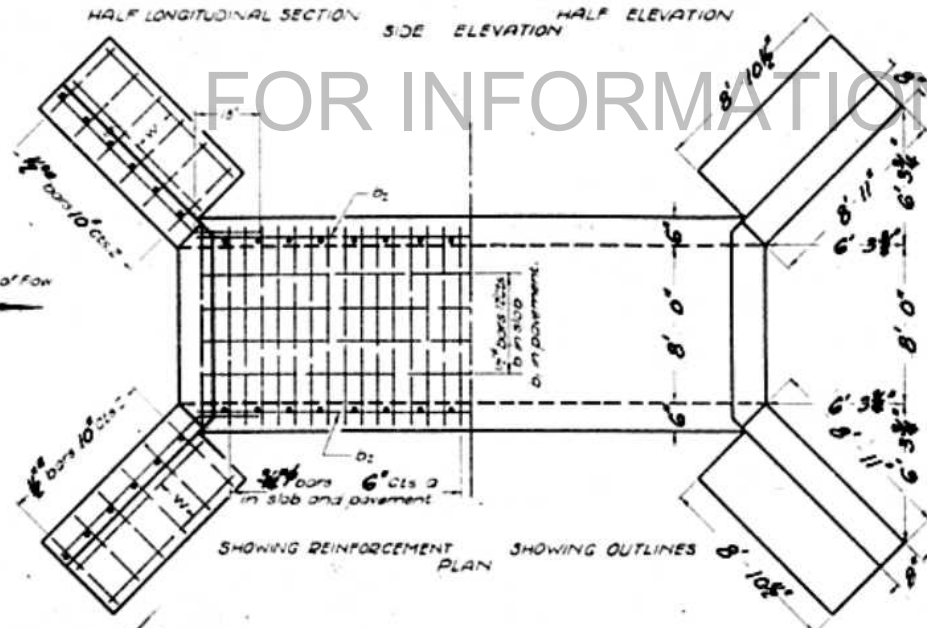
STATE OF ILLINOIS
DEPARTMENT OF PUBLIC WORKS & BUILDINGS
DIVISION OF HIGHWAYS

SHEET NO. 1
/ SHEETS



BOND ISSUE ROUTE NO.	SECTION	COUNTY	TOTAL SHEETS	SHEET NO.
F.A. 150	7-A	Clinton	53	49

FOR ROAD DIST. NO. 7 ALABAMA, MISSISSIPPI AND ARKANSAS - 394-B



BILL OF MATERIAL

Bars	Number	Size	Length
a	166	3/4"	10'-9"
b	16	1/2"	23'-0"
c	16	1/2"	24'-0"
d	32	1/2"	21'-6"
h	4	1/2"	3'-0"
h1	10	1/2"	8'-6"
h2	32	1/2"	10'-6"
h3	4	1/2"	8'-0"
h4	4	1/2"	3'-6"
v	24	1/2"	7'-0"
v1	8	1/2"	10'-6"
v2	12	1/2"	9'-6"
v3	12	1/2"	8'-6"
v4	12	1/2"	7'-6"
w	8	1/2"	8'-6"
z	44	1/2"	3'-6"

Glass & Concrete Cords 268
Reinforcing Steel Lbs 4940

COMPUTED -
CHECKED -
DRAWN - H.L. King
CHECKED - J.A. Taylor
ASSEMBLED - H.L. King
CHECKED - H.L. King
INKED - H.L. King

EXAMINED 2-23-57
DESIGNED H.L. King
CHECKED J.A. Taylor
APPROVED H.L. King

Notes:
Class X concrete shall be used throughout
All reinforcing steel shall be wired securely
in place before the concrete is poured

F.A. Route 150 Const. Sec. 7-A
Clinton County
Station 717+20