

063

11-09-2018 LETTING ITEM 063

F.A.P. RTE	SECTION	COUNTY	TOTAL SHEETS	SHEET NO.
322	3SLP-1	JACKSON	18	1
		ILLINOIS	CONTRACT NO. 78674	

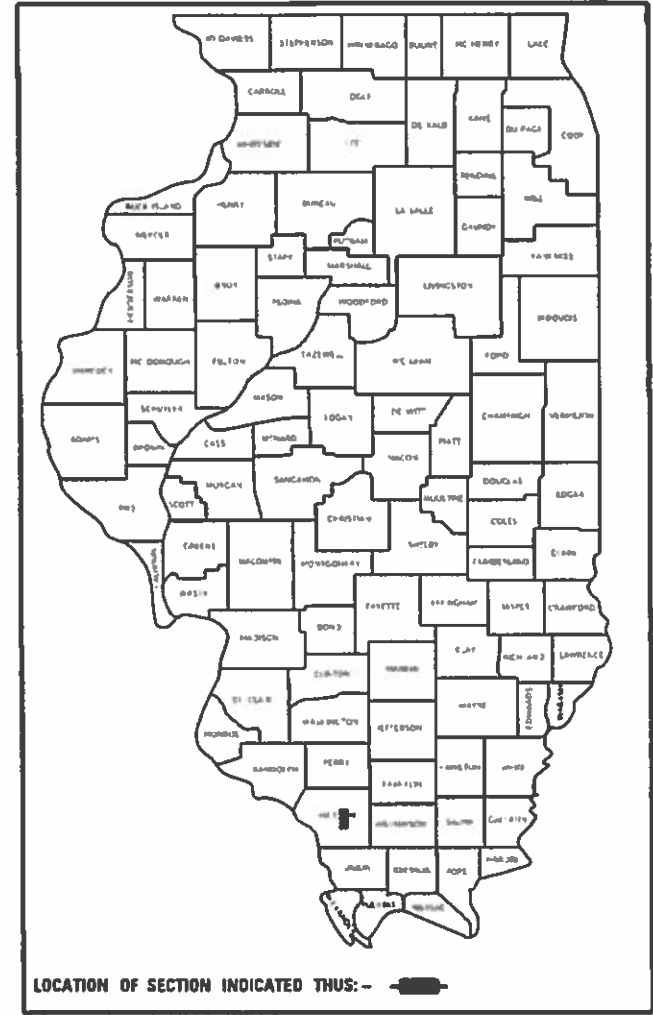
STATE OF ILLINOIS
DEPARTMENT OF TRANSPORTATION

**PROPOSED
HIGHWAY PLANS**

FAP ROUTE 322 (US 51)
SECTION 3SLP-1

SLOPE REPAIR
JACKSON COUNTY

D-89-063-18



FOR INDEX OF SHEETS, SEE SHEET NO. 3
FOR SUMMARY OF QUANTITIES, SEE SHEET NO. 5-6

TRAFFIC DATA

US 51 (FAP 322)
TRAFFIC DATA

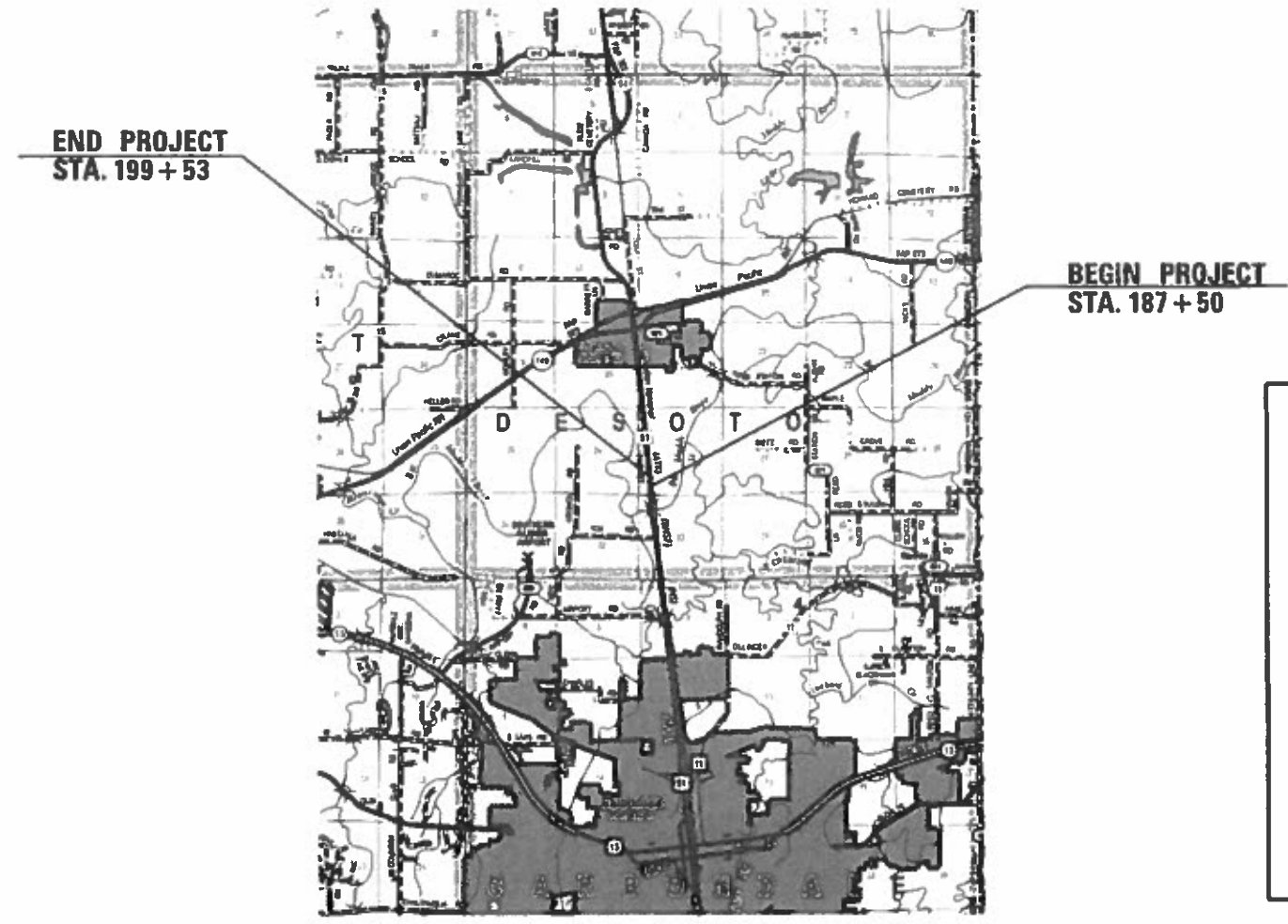
	(2017)	(2038)
PC =	6,280	7,740
SU =	170	210
MU =	250	310
ADT =	6,700	8,260

TF = 1.3

TOWNSHIPS

CARBONDALE

C-99-097-18



POSTED SPEED : 55 MPH

J.U.L.I.E.
JOINT UTILITY LOCATION INFORMATION FOR EXCAVATION
1-800-892-0123
OR 811

PROJECT ENGINEER: CHARLES STEIN
PROJECT DESIGNER: MELISSA COLE

CONTRACT NO. 78674

GROSS LENGTH = 1203 FT. = 0.23 MILES
NET LENGTH = 1203 FT. = 0.23 MILES

STATE OF ILLINOIS
DEPARTMENT OF TRANSPORTATION

SUBMITTED August 22 2018
Jeffrey L. Keim
REGION FIVE ENGINEER

Oct 5 2018
Scott A. Etkin
ENGINEER OF DESIGN AND ENVIRONMENT

Oct 5 2018
Paul P. Chaffin
DIRECTOR OF HIGHWAYS PROJECT IMPLEMENTATION

PRINTED BY THE AUTHORITY
OF THE STATE OF ILLINOIS

MODEL: Default
FILE NAME: \\s:\04\BENTLEY\EG\Illinois\DOT\Documents\DOT_Offices\Districts\Illinois\78674\CAD\Drawings\78674-Sheets.dgn

Prepared By: _____
DISTRICT STUDIES & PLANS ENGINEER

Examined By: *Naucy Lee*
DISTRICT LAND ACQUISITION ENGINEER

Examined By: *Carrie Nelson*
DISTRICT PROGRAM DEVELOPMENT ENGINEER

Examined By: *Keel Kelly*
DISTRICT OPERATIONS ENGINEER

Examined By: *KRS*
DISTRICT PROJECT IMPLEMENTATION ENGINEER

Examined By: *Douglas J. Kelly*
DISTRICT CONSTRUCTION ENGINEER

Examined By: *RGO*
DISTRICT MATERIALS ENGINEER

USER NAME = colemm	DESIGNED -	REVISED -
DRAWN -	REVISED -	
PLOT SCALE = 100 0000' / in.	CHECKED -	REVISED -
PLOT DATE = 8/22/2018	DATE -	REVISED -

**STATE OF ILLINOIS
DEPARTMENT OF TRANSPORTATION**

SIGNATURE SHEET

SCALE: SHEET OF SHEETS STA. TO STA.

F.A.P. RTE. 322	SECTION 35LP-1	COUNTY JACKSON	TOTAL SHEETS 18	SHEET NO. 2
ILLINOIS FED. AID PROJECT CONTRACT NO. 78674				

INDEX OF SHEETS

SHEET NO.	DESCRIPTION
1	COVER SHEET
2	SIGNATURE SHEET
3	INDEX OF SHEETS AND STANDARDS
4	GENERAL NOTES AND MIX DESIGN
5-6	SUMMARY OF QUANTITIES
7	TYPICAL SECTIONS
8	SCHEDULES
9	PLAN SHEET
10-11	PLAN DETAILS
12-18	CROSS SECTIONS

HIGHWAY STANDARDS

- 000001-06_STANDARDSYMBOLSABBREVIATIONS&PATTERNS
- 001006_DECIMALOF INCH&FOOT
- 630001-12_STEELPLATEBEAMGRDRAIL
- 630201-07_PCC-BITSTB@STEELPLATEBEAMGRDRAIL
- 630301-08_SHLDWIDENFORTYPE1GRDRAILTERMS
- 701001-02_OFFRDOP-2L2W-15FTMINFROMEOP
- 701006-05_OFFRDOP-2L2W-15FTTTOEOP
- 701011-04_OFFRDMOVINGOP-2L2W-DAYONLY
- 701316-12_LNCLOSURE2L2W-BRIDGEREPAIR45MPHORMORE
- 701901-07_TRAFCNTRLDEVICES

MODEL: D:\a\...
 FILE NAME: P:\IL08\FEB18\NTEC\Illinois.gov\PWIDOT\Documents\DOT_Offices\District 9\Projects\78674\CADDData\CAD\Sheets\DS78674-Sheets.dgn

USER NAME = colemm	DESIGNED -	REVISED -
	DRAWN -	REVISED -
PLOT SCALE = 100.0000' / in.	CHECKED -	REVISED -
PLOT DATE = 8/24/2018	DATE -	REVISED -

**STATE OF ILLINOIS
DEPARTMENT OF TRANSPORTATION**

**INDEX OF SHEETS AND
HIGHWAY STANDARDS**

SCALE: SHEET OF SHEETS STA. TO STA.

F.A.P. RTE.	SECTION	COUNTY	TOTAL SHEETS	SHEET NO.
322	35LP-1	JACKSON	18	3
CONTRACT NO. 78674				
ILLINOIS FED. AID PROJECT				

GENERAL NOTES

FACTORS USED FOR ESTIMATING PLAN QUANTITIES ARE AS FOLLOWS AND SHALL NOT BE USED FOR THE BASIS OF FINAL QUANTITIES:

ALL HOT MIX ASPHALT	2.016 TONS/CU. YD.
CRACK FILLING	0.80 LBS/FT
EARTH	110 LBS/CU. FT.
LIME	6% WEIGHT OF EARTH

THE QUANTITY USED FOR CRACK SEALING IS AN ESTIMATE. THE ACTUAL AMOUNT USED WILL BE DETERMINED BY THE ENGINEER

TRIM EDGES OF EXISTING HOT MIX ASPHALT SURFACE FLUSH WITH EXISTING PAVEMENT PRIOR TO CONSTRUCTING HOT MIX ASPHALT SHOULDERS.

AT ALL LOCATIONS WHERE THE PROPOSED HOT MIX ASPHALT SHOULDER OR CONCRETE PAVEMENT JOINS AN EXISTING HOT MIX ASPHALT SHOULDER, A FULL DEPTH SAWED JOINT SHALL BE CONSTRUCTED. THE COST OF THIS JOINT WILL BE INCLUDED IN THE COST OF THE HOT MIX ASPHALT SHOULDER BEING CONSTRUCTED.

THERE ARE NO AVAILABLE WASTE SITES ON THE EXISTING RIGHT OF WAY WITHIN THE PROJECT LIMITS. DISPOSAL WILL BE THE RESPONSIBILITY OF THE CONTRACTOR AND WASTE MUST BE DISPOSED OF IN ACCORDANCE WITH ARTICLE 202.03 OF THE STANDARD SPECIFICATIONS.

COMMITMENTS: NONE

MIX DESIGN

Locations	Hot-Mix Asphalt Shoulders (Top Lift)
Mixture Use(s):	Hot-Mix Asphalt Surface Course, N30, IL-9.5L
AC/PG:	PG64-22
ABR % (Max):	See Special Provision
Design Air Voids:	4.0 %, 30 Gyration Design
Mixture Composition: (Gradation Mixture)	IL-9.5L
Friction Aggregate:	None
Mixture Weight:	112 lbs/Sq Yd/in
Quality Management Program:	QCQA
Sublot Size:	NA

Locations	Hot-Mix Asphalt Shoulders (Lower Lifts)
Mixture Use(s):	Hot-Mix Asphalt Binder Course, N30, IL-19.0L
AC/PG:	PG64-22
ABR % (Max):	See Special Provision
Design Air Voids:	4.0 %, 30 Gyration Design
Mixture Composition: (Gradation Mixture)	IL-19.0L
Friction Aggregate:	None
Mixture Weight:	112 lbs/Sq Yd/in
Quality Management Program:	QC/QA

MODEL: Default
 FILE NAME: P:\1108\B&E\BIDD\ITEC\Illinois\gov\PI\DOT\Documents\DOT_Offices\Bldg\9\Projects\78674\CADD\Drawings\978674-Sheets.dgn

USER NAME = colemm	DESIGNED -	REVISED -	
	DRAWN -	REVISED -	
PLOT SCALE = 100,0000' / in.	CHECKED -	REVISED -	
PLOT DATE = 8/24/2018	DATE -	REVISED -	

**STATE OF ILLINOIS
DEPARTMENT OF TRANSPORTATION**

**MIX DESIGN AND
GENERAL NOTES**

SCALE: SHEET OF SHEETS STA. TO STA.

F.A.P. RTE.	SECTION	COUNTY	TOTAL SHEETS	SHEET NO.
322	3SLP-1	JACKSON	18	4
CONTRACT NO. 78674				
ILLINOIS FED. AID PROJECT				

SUMMARY OF QUANTITIES

COUNTY:	COUNTY:	JACKSON CO.
ROUTE:	ROUTE:	FAP 322 (US 51)
FUNDING:	FUNDING:	100% STATE
LOCATION:	LOCATION:	RURAL

CODE NUMBER	ITEM DESCRIPTION	UNIT	TOTAL QUANTITY	0006
20200100	EARTH EXCAVATION	CU YD	772	772
20400800	FURNISHED EXCAVATION	CU YD	772	772
25000200	SEEDING, CLASS 2	ACRE	0.1	0.1
25000350	SEEDING, CLASS 7	ACRE	0.1	0.1
25000400	NITROGEN FERTILIZER NUTRIENT	POUND	12	12
25000500	PHOSPHORUS FERTILIZER NUTRIENT	POUND	6	6
25000600	POTASSIUM FERTILIZER NUTRIENT	POUND	6	6
25000700	AGRICULTURAL GROUND LIMESTONE	TON	0.1	0.1
28000250	TEMPORARY EROSION CONTROL SEEDING	POUND	14	14
28001100	TEMPORARY EROSION CONTROL BLANKET	SQ YD	332	332
30200650	PROCESSING MODIFIED SOIL 12"	SQ YD	534	534
31001500	LIME	TON	13	13
44004250	PAVED SHOULDER REMOVAL	SQ YD	350	350

MODEL: Default
 FILE: \\s:\cadd\848E8D8D\NTEC\Illinois\gov\PI\DOT\Documents\DOT_Offices\Director\Projects\78674\CADDData\CAD\Sheet\0778674-Sheets.dgn

USER NAME = colemm	DESIGNED -	REVISED -
	DRAWN -	REVISED -
PLOT SCALE = 100,0000' / in.	CHECKED -	REVISED -
PLOT DATE = 8/24/2018	DATE -	REVISED -

**STATE OF ILLINOIS
DEPARTMENT OF TRANSPORTATION**

SUMMARY OF QUANTITIES

SCALE: SHEET OF SHEETS STA. TO STA.

F.A.P. RTE.	SECTION	COUNTY	TOTAL SHEETS	SHEET NO.
322	3SLP-1	JACKSON	18	5
CONTRACT NO. 78674				
ILLINOIS FED. AID PROJECT				

SUMMARY OF QUANTITIES - CONT

COUNTY:	COUNTY:	JACKSON CO.
ROUTE:	ROUTE:	FAP 322 (US 51)
FUNDING:	FUNDING:	100% STATE
LOCATION:	LOCATION:	RURAL

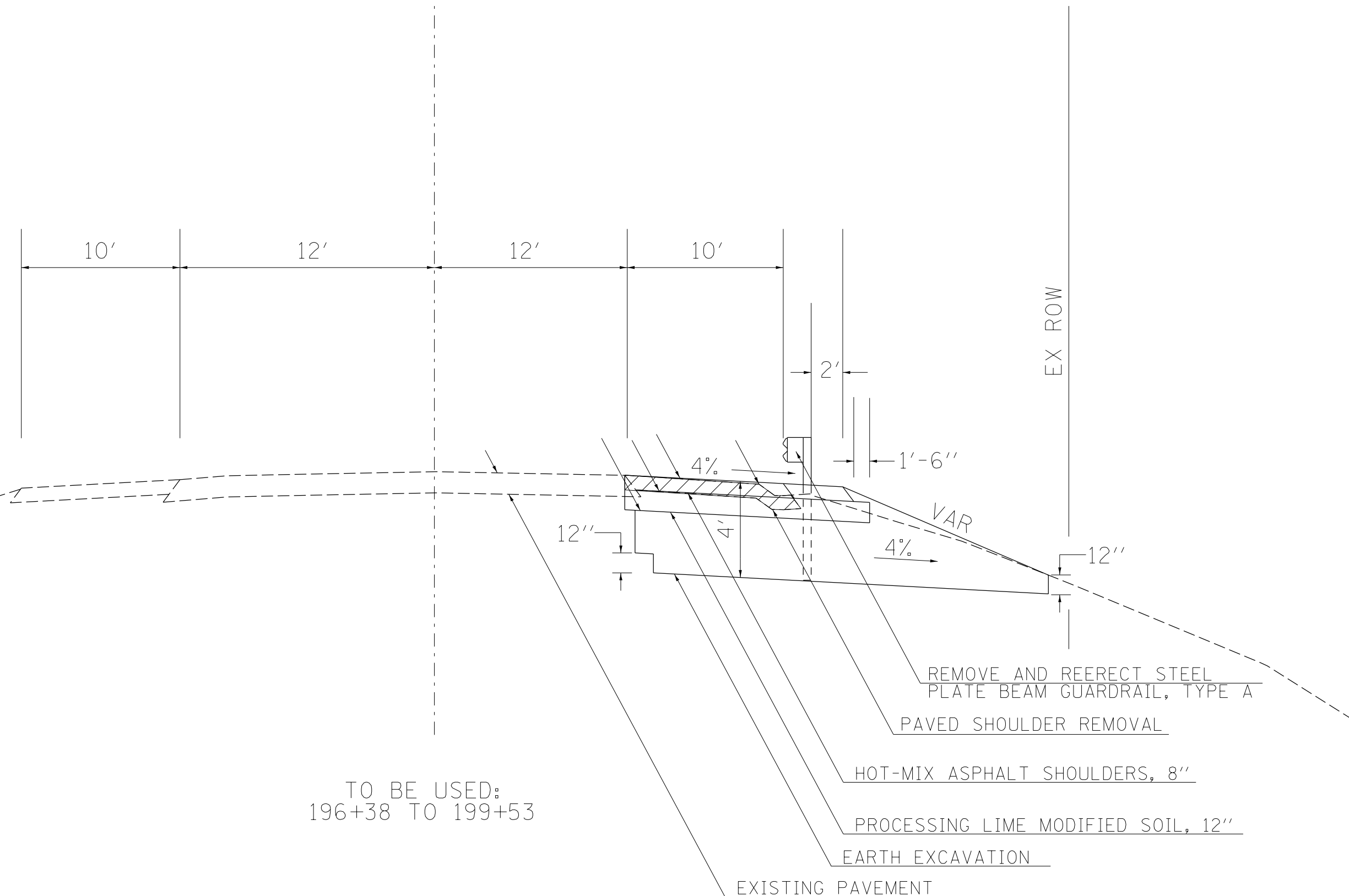
CODE NUMBER	ITEM DESCRIPTION	UNIT	TOTAL QUANTITY	
				0006
45100200	CRACK FILLING	POUND	710	710
48203029	HOT-MIX ASPHALT SHOULDERS, 8"	SQ YD	482	482
*	63301210 REMOVE AND REERECT STEEL PLATE BEAM GUARDRAIL, TYPE A	FOOT	275	275
64200108	SHOULDER RUMBLE STRIPS, 8 INCH	FOOT	315	315
67100100	MOBILIZATION	L SUM	1	1
70100100	TRAFFIC CONTROL AND PROTECTION, STANDARD 701316	EACH	1	1
70106500	TEMPORARY BRIDGE TRAFFIC SIGNALS	EACH	2	2
X7015005	CHANGEABLE MESSAGE SIGN	CAL DA	28	28

* SPECIALTY ITEM

MODEL: Default
 FILE NAME: P:\IL08\B&E\BIDD\ITEC\Illinois.gov\PIWDOT\Documents\DOT_Offices\Director\9\Projects\78674\CADDData\CAD\Sheet\0778674-Sheets.dgn

USER NAME = colemm	DESIGNED -	REVISED -	STATE OF ILLINOIS DEPARTMENT OF TRANSPORTATION	SUMMARY OF QUANTITIES				F.A.P. RTE.	SECTION	COUNTY	TOTAL SHEETS	SHEET NO.
	DRAWN -	REVISED -		SCALE:	SHEET	OF	SHEETS	STA.	TO STA.	ILLINOIS	FED. AID PROJECT	
PLOT SCALE = 100,0000' / in.	CHECKED -	REVISED -		CONTRACT NO. 78674								
PLOT DATE = 8/24/2018	DATE -	REVISED -		322 35LP-1 JACKSON 18 6								

MODEL: Default
 FILE NAME: P:\IL08\B&E\DOT\Illinois\pwr\DOT\Documents\DOT Office\Director 9\Projects\78674\CADD\Drawings\78674-Sheets.dwg



TO BE USED:
196+38 TO 199+53

- REMOVE AND REERECT STEEL PLATE BEAM GUARDRAIL, TYPE A
- PAVED SHOULDER REMOVAL
- HOT-MIX ASPHALT SHOULDERS, 8"
- PROCESSING LIME MODIFIED SOIL, 12"
- EARTH EXCAVATION
- EXISTING PAVEMENT

USER NAME = colemm	DESIGNED -	REVISED -
	DRAWN -	REVISED -
PLOT SCALE = 100.0000' / in.	CHECKED -	REVISED -
PLOT DATE = 8/24/2018	DATE -	REVISED -

**STATE OF ILLINOIS
DEPARTMENT OF TRANSPORTATION**

TYPICAL SECTION

SCALE: SHEET OF SHEETS STA. TO STA.

F.A.P. RTE. 322	SECTION 35LP-1	COUNTY JACKSON	TOTAL SHEETS 18	SHEET NO. 7
ILLINOIS FED. AID PROJECT			CONTRACT NO. 78674	

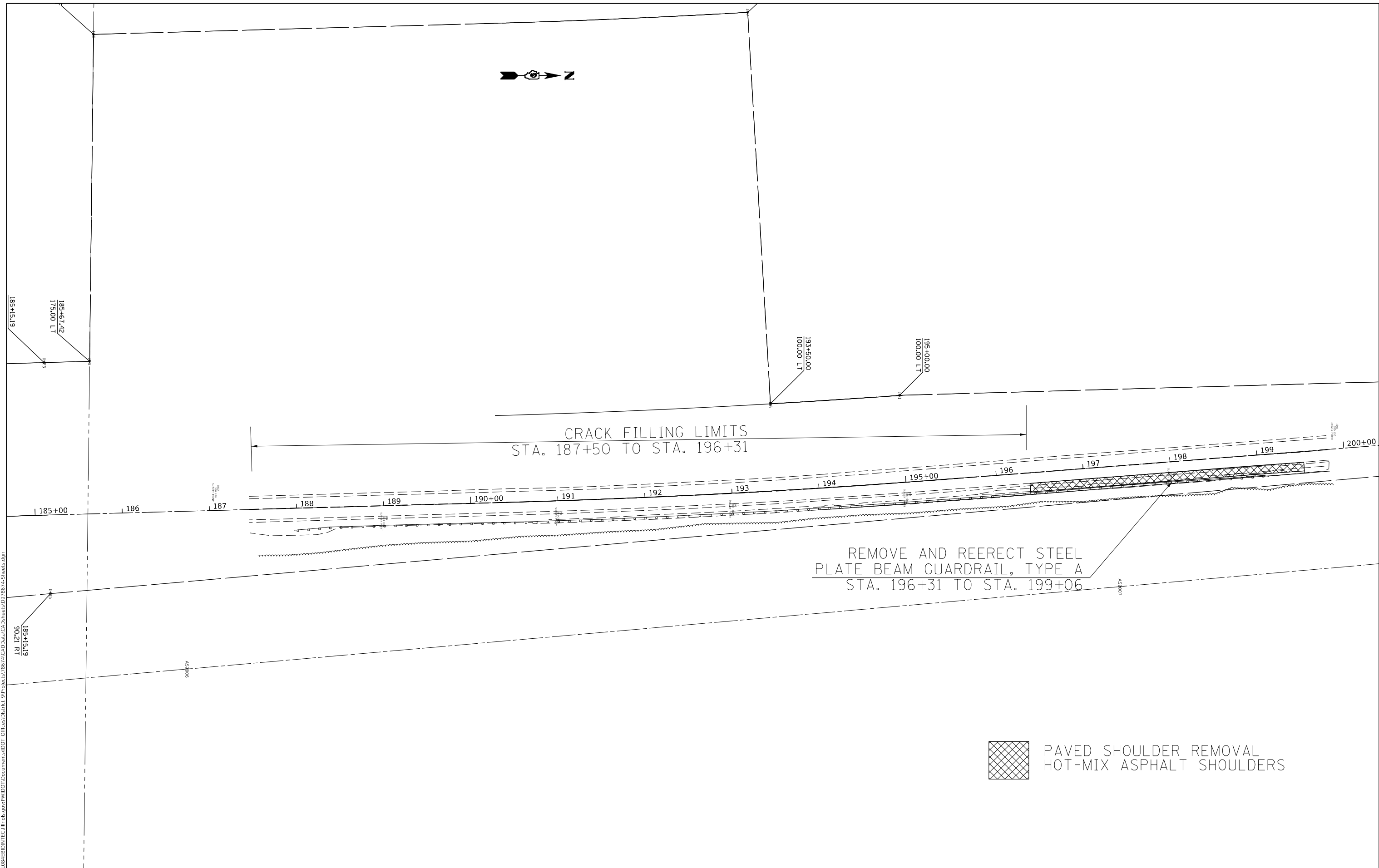
SHOULDER SCHEDULE

LOCATION STATION TO STATION							PAVED SHOULDER REMOVAL	HMA SHLDRS, 8"	BITUMINOUS MATERIALS (TACK COAT)	SHOULDER RUMBLE STRIPS, 8 INCH	PROCESSING MODIFIED SOIL 12 INCH	LIME	CRACK FILLING	NOTES	
							SQ YD	SQ YD	POUND	FOOT	SQ YD	TON	POUND		
STA	187+50.		TO		STA	196+38.								RT ONLY	
STA	196+38.		TO		STA	199+53.	350	482	109	315	534	13		SHOULDER ON RT ONLY	
TOTAL							350	482	109	315	534	13	710		

SEEDING SCHEDULE

LOCATION STATION TO STATION							SEEDING CL 2	SEEDING CL 7	NITROGEN FERTILIZER NUTRIENT	PHOSPHOROUS FERTILIZER NUTRIENT	POTASSIUM FERTILIZER NUTRIENT	AGRICULTURAL GROUND LIMESTONE	TEMPORARY EROSION CONTROL BLANKET	TEMPORARY EROSION CONTROL SEEDING	NOTES
							ACRE	ACRE	POUND	POUND	POUND	TON	SQ YD	POUND	
STA	196+38.		TO		STA	196+50.	0.00	0.00	0	0	0	0.00	9	0.4	RT ONLY
STA	196+50.		TO		STA	197+00.	0.01	0.01	2	1	1	0.02	44	1.8	RT ONLY
STA	197+00.		TO		STA	197+50.	0.01	0.01	2	1	1	0.02	54	2.2	RT ONLY
STA	197+50.		TO		STA	198+00.	0.01	0.01	2	1	1	0.02	56	2.3	RT ONLY
STA	198+00.		TO		STA	198+50.	0.01	0.01	2	1	1	0.02	56	2.3	RT ONLY
STA	198+50.		TO		STA	199+00.	0.01	0.01	2	1	1	0.02	60	2.5	RT ONLY
STA	199+00.		TO		STA	199+53.	0.01	0.01	2	1	1	0.02	53	2.2	RT ONLY
TOTAL							0.1	0.1	12	6	6	0.1	332	14	

MODEL: Default
FILE NAME: P:\ILLINOIS\BIDDING\TEC\Illinois.gov\RWIDOT\Documents\DOT_Offices\JDL\78674\CADD\Drawings\78674-Sheets.dgn



MODEL: Default
 FILE NAME: P:\IL08\EBID\NTEC\Illinois.gov\PIWDOT\Documents\DOT_Offices\District 9\Projects\78674\CADD\Drawings\78674-Sheets.dgn

REMOVE AND REERECT STEEL
 PLATE BEAM GUARDRAIL, TYPE A
 STA. 196+31 TO STA. 199+06

CRACK FILLING LIMITS
 STA. 187+50 TO STA. 196+31

 PAVED SHOULDER REMOVAL
 HOT-MIX ASPHALT SHOULDERS

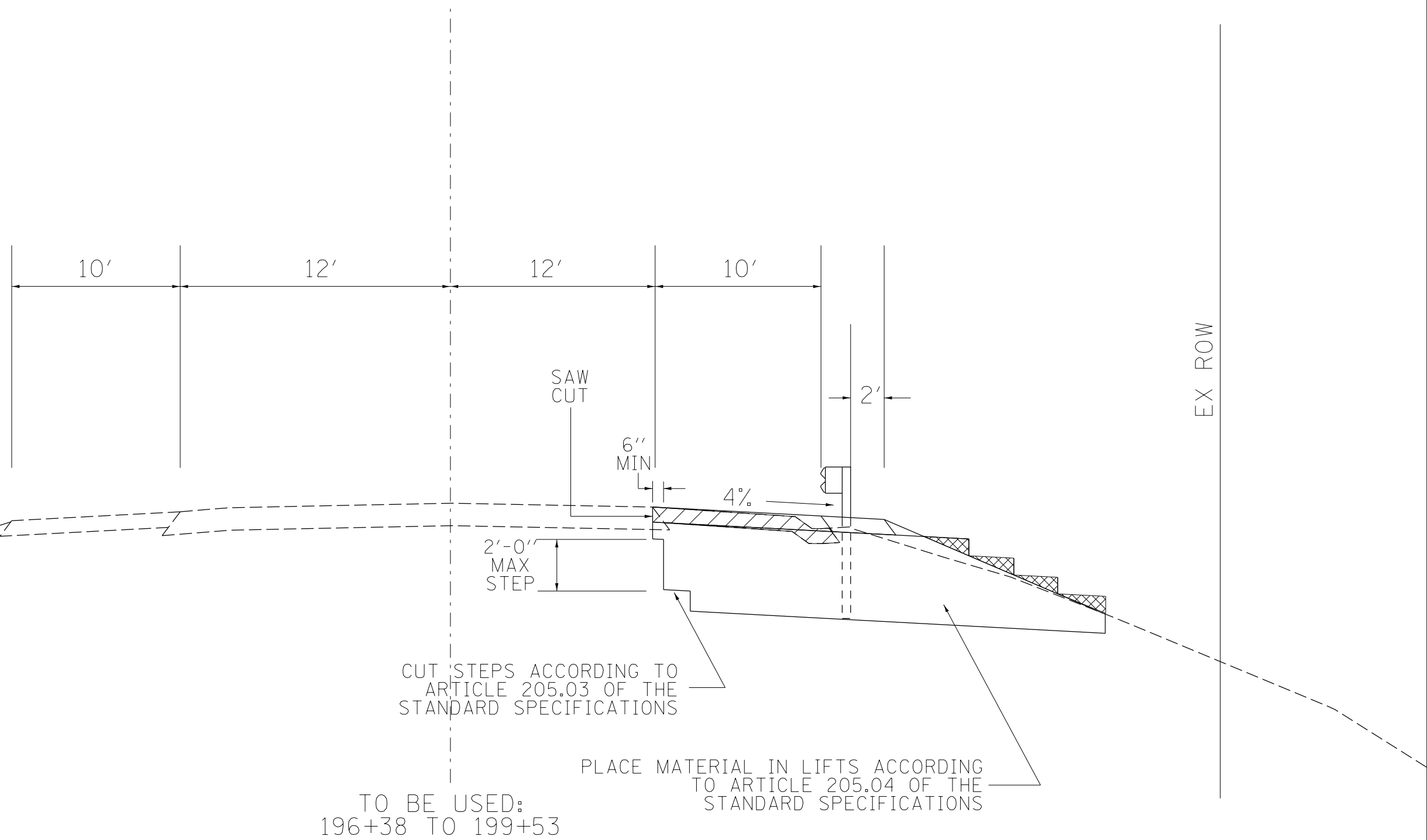
USER NAME = colemm	DESIGNED -	REVISED -
DRAWN -	REVISED -	
PLOT SCALE = 100.0000' / in.	CHECKED -	REVISED -
PLOT DATE = 8/24/2018	DATE -	REVISED -

**STATE OF ILLINOIS
 DEPARTMENT OF TRANSPORTATION**

PLAN SHEET			
SCALE:	SHEET	OF	SHEETS
	STA.	TO	STA.

F.A.P. RTE.	SECTION	COUNTY	TOTAL SHEETS	SHEET NO.
322	35LP-1	JACKSON	18	9
ILLINOIS FED. AID PROJECT			CONTRACT NO. 78674	

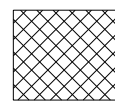
MODEL: Default
 FILE NAME: P:\ILLINOIS\BIDDING\TEC\Illinois\pwr\RIDOT\Documents\DOT Office\DIR\ct 9\Projects\78674\CADD\DATA\CAD\Sheet\0778674-Sheets.dgn



CUT STEPS ACCORDING TO ARTICLE 205.03 OF THE STANDARD SPECIFICATIONS

PLACE MATERIAL IN LIFTS ACCORDING TO ARTICLE 205.04 OF THE STANDARD SPECIFICATIONS

TO BE USED:
 196+38 TO 199+53



TRIM EXCESS MATERIAL ACCORDING TO ARTICLE 205.07 OF THE STANDARD SPECIFICATIONS

USER NAME = colemm	DESIGNED -	REVISED -
	DRAWN -	REVISED -
PLOT SCALE = 100.0000' / in.	CHECKED -	REVISED -
PLOT DATE = 8/24/2018	DATE -	REVISED -

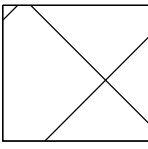
**STATE OF ILLINOIS
 DEPARTMENT OF TRANSPORTATION**

STEP CONSTRUCTION DETAIL

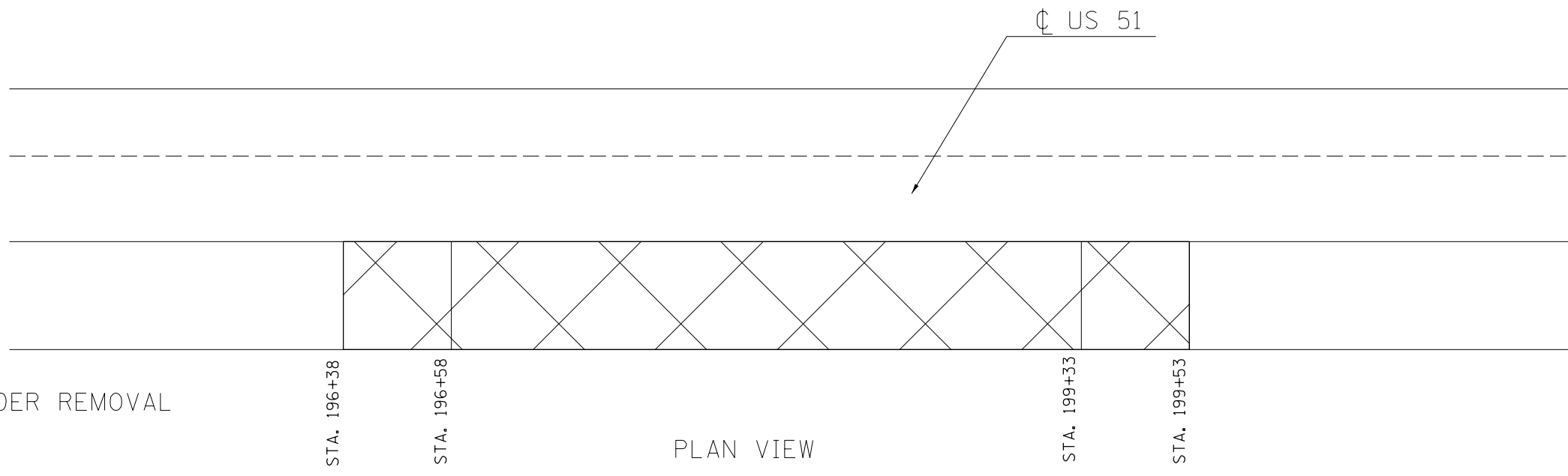
SCALE: SHEET OF SHEETS STA. TO STA.

F.A.P. RTE.	SECTION	COUNTY	TOTAL SHEETS	SHEET NO.
322	3SLP-1	JACKSON	18	10
CONTRACT NO. 78674				
ILLINOIS FED. AID PROJECT				

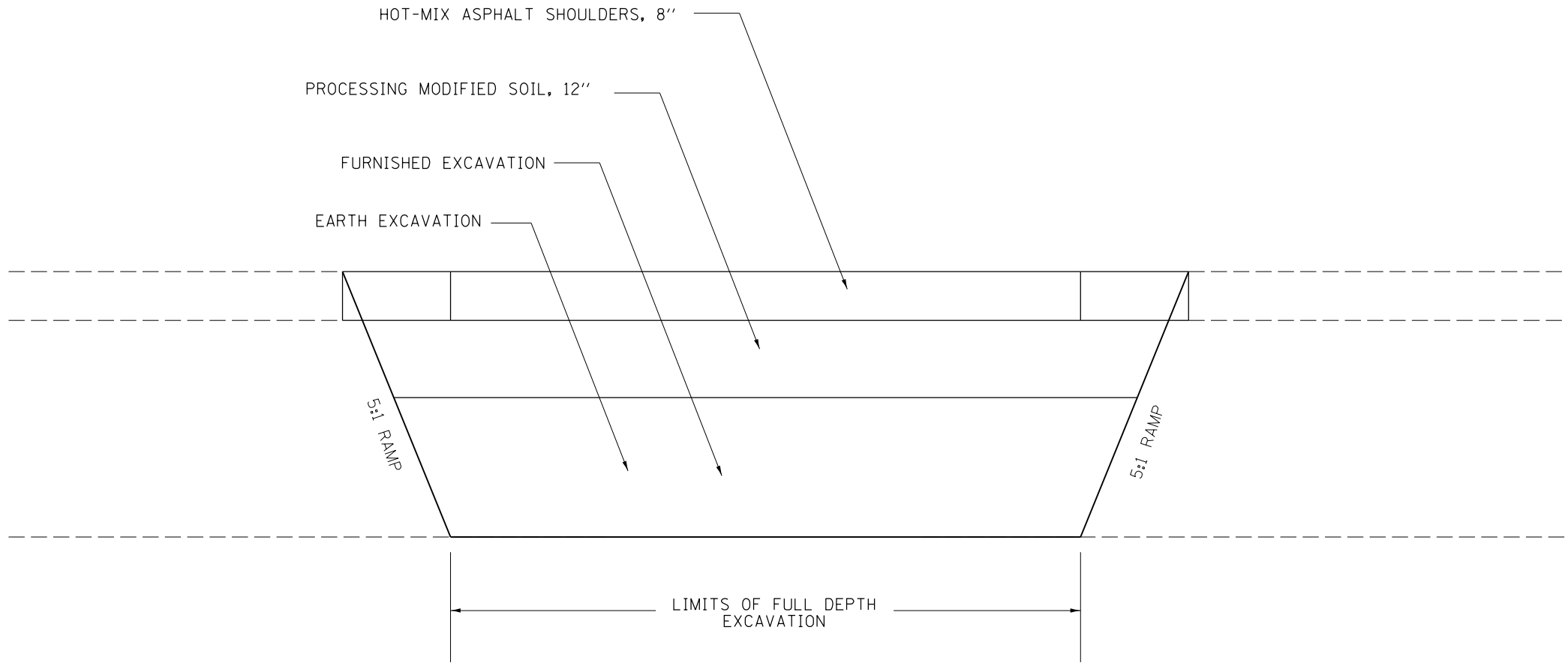
MODEL: Default
 FILE NAME: P:\ILLINOIS\BIDDING\TEC\Illinois\pwr\DOT\Documents\DOT_Offices\Director 9\Projects\78674\CADD\Drawings\CAD\Drawings\78674-Sheets.dgn



SHOULDER REMOVAL



PLAN VIEW



PROFILE VIEW

USER NAME = colemm	DESIGNED -	REVISED -
	DRAWN -	REVISED -
PLOT SCALE = 100.0000' / in.	CHECKED -	REVISED -
PLOT DATE = 8/24/2018	DATE -	REVISED -

**STATE OF ILLINOIS
 DEPARTMENT OF TRANSPORTATION**

CONSTRUCTION RAMP STAGING DETAIL

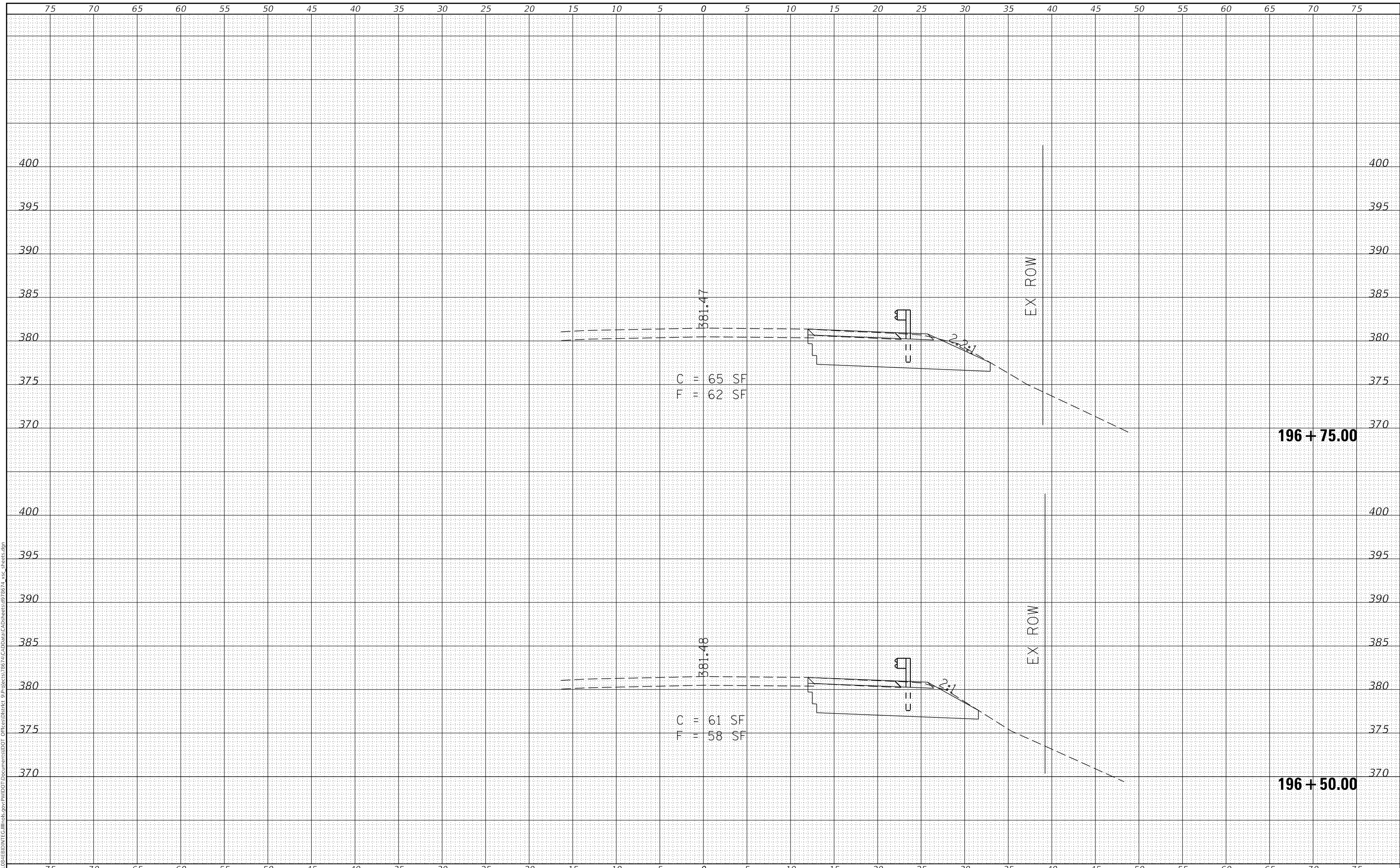
SCALE: SHEET OF SHEETS STA. TO STA.

F.A.P. RTE.	SECTION	COUNTY	TOTAL SHEETS	SHEET NO.
322	3SLP-1	JACKSON	18	11
CONTRACT NO. 78674				
ILLINOIS FED. AID PROJECT				

FINAL SURVEY NO.	SURVEYED	DATE
NOTE BOOK	PLOTTED	BY
AREAS CHECKED	TEMPLATE	
	AREAS CHECKED	

ORIGINAL SURVEY NO.	SURVEYED	DATE
NOTE BOOK	PLOTTED	BY
AREAS CHECKED	TEMPLATE	
	AREAS CHECKED	

MODEL: Defnair
 FILE NAME: D:\ILLINOIS\EBID\NTC\Illinois\pwp\WIDOT\Documents\DOT Offices\District 9\Projects\867\3-CAD\DATA\CAD\Drawings\867\1_xsec_2sheets.dgn



USER NAME = colemm	DESIGNED -	REVISED -
	DRAWN -	REVISED -
PLOT SCALE = 10.0000 ' / in.	CHECKED -	REVISED -
PLOT DATE = 8/24/2018	DATE -	REVISED -

**STATE OF ILLINOIS
 DEPARTMENT OF TRANSPORTATION**

CROSS SECTIONS

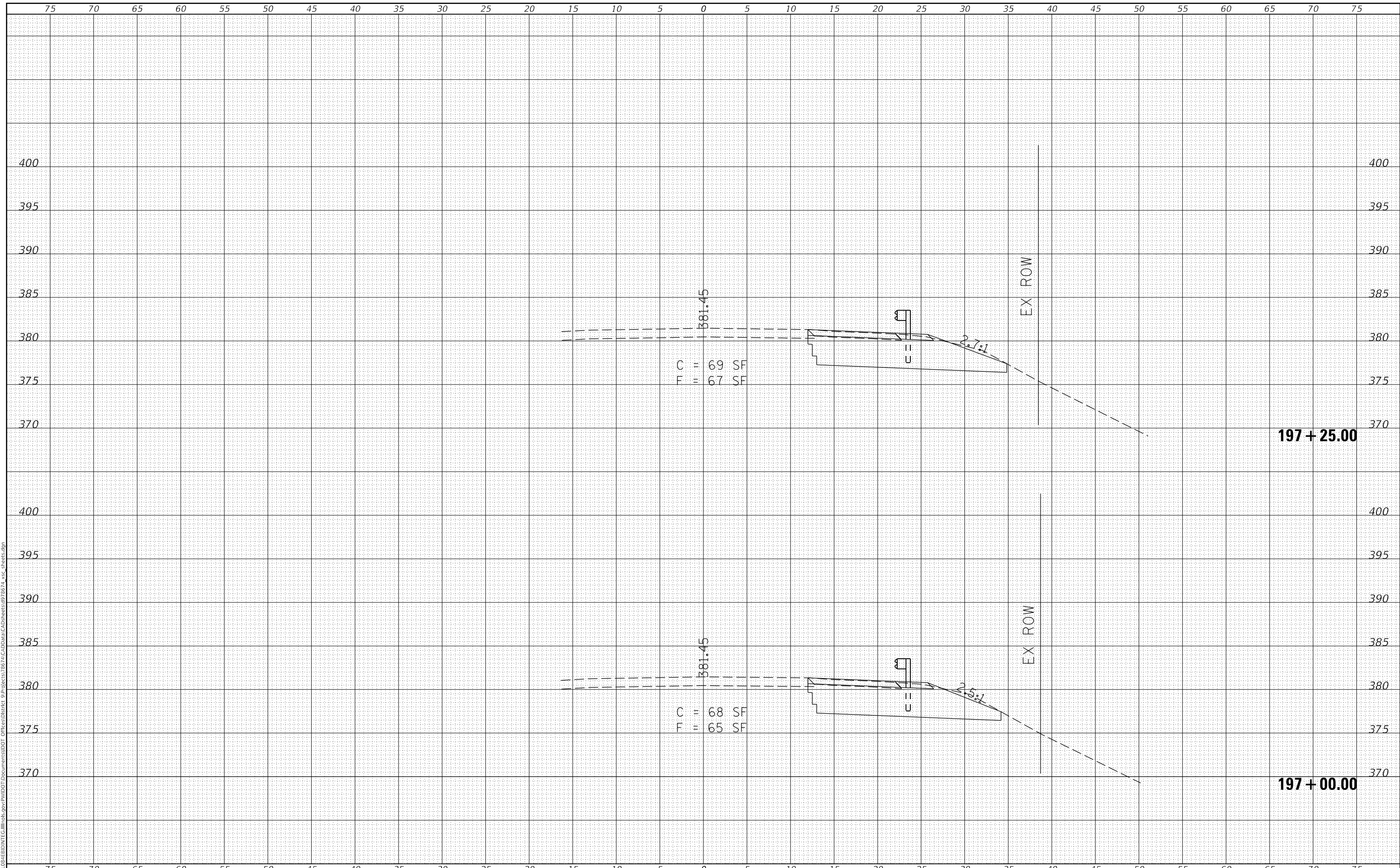
SCALE: SHEET OF SHEETS STA. 196+50.00 TO STA. 196+75.00

F.A.P. RTE.	SECTION	COUNTY	TOTAL SHEETS	SHEET NO.
322	3SLP-1	JACKSON	18	12
CONTRACT NO. 78674				
ILLINOIS FED. AID PROJECT				

FINAL SURVEY NO.	SURVEYED	DATE
NOTE BOOK	PLOTTED	BY
AREAS CHECKED	TEMPLATE	
	AREAS CHECKED	

ORIGINAL SURVEY NO.	SURVEYED	DATE
NOTE BOOK	PLOTTED	BY
AREAS CHECKED	TEMPLATE	
	AREAS CHECKED	

MODEL: Defnair
 FILE NAME: D:\ILLINOIS\BID\NTEC\Illinois\pwp\WIDOT\Documents\DOT Office\District 9\Projects\867\CADData\CAD\Drawings\867\A_xc.dwg



USER NAME = colemm	DESIGNED -	REVISED -
	DRAWN -	REVISED -
PLOT SCALE = 10.0000' / in.	CHECKED -	REVISED -
PLOT DATE = 8/24/2018	DATE -	REVISED -

**STATE OF ILLINOIS
 DEPARTMENT OF TRANSPORTATION**

CROSS SECTIONS

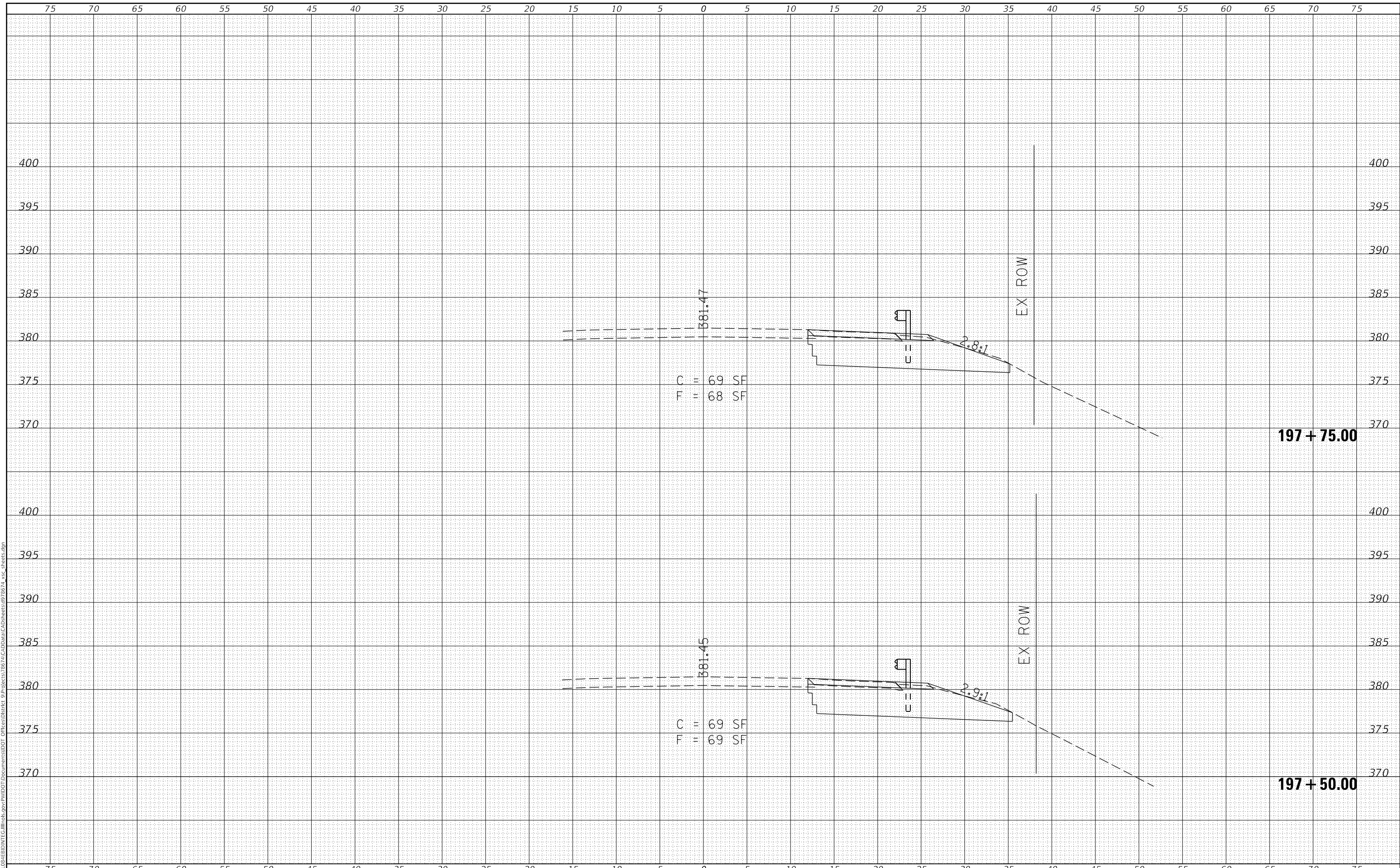
SCALE: SHEET OF SHEETS STA. 197+00.00 TO STA. 197+25.00

F.A.P. RTE. 322	SECTION 35LP-1	COUNTY JACKSON	TOTAL SHEETS 18	SHEET NO. 13
CONTRACT NO. 78674				
ILLINOIS FED. AID PROJECT				

FINAL SURVEY NO.	SURVEYED	DATE
NOTE BOOK	PLOTTED	BY
AREAS CHECKED	TEMPLATE	
	AREAS CHECKED	

ORIGINAL SURVEY NO.	SURVEYED	DATE
NOTE BOOK	PLOTTED	BY
AREAS CHECKED	TEMPLATE	
	AREAS CHECKED	

MODEL: Defnair
 FILE NAME: D:\ILLINOIS\BID\NTE\Illinois\pwp\WIDOT\Documents\DOT Offices\District 9\Projects\867\3D\Drawn\CAD\Drawn\978574_xsec.dwg



USER NAME = colemm	DESIGNED -	REVISED -
	DRAWN -	REVISED -
PLOT SCALE = 10.0000' / in.	CHECKED -	REVISED -
PLOT DATE = 8/24/2018	DATE -	REVISED -

**STATE OF ILLINOIS
 DEPARTMENT OF TRANSPORTATION**

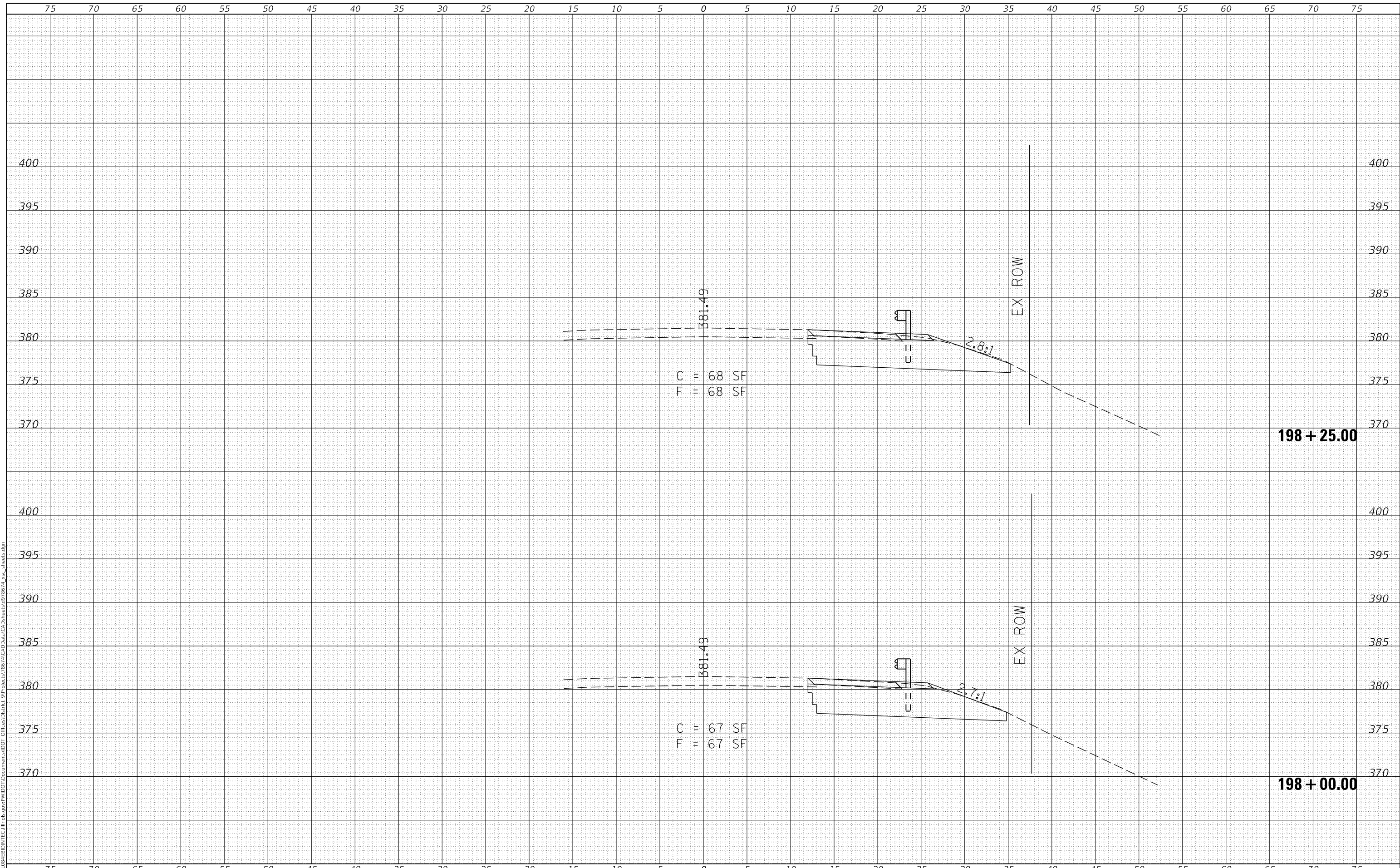
CROSS SECTIONS	
SCALE:	SHEET OF SHEETS
STA. 197+50.00 TO STA. 197+75.00	

F.A.P. RTE. 322	SECTION 35LP-1	COUNTY JACKSON	TOTAL SHEETS 18	SHEET NO. 14
CONTRACT NO. 78674				
ILLINOIS FED. AID PROJECT				

FINAL SURVEY NO.	SURVEYED	DATE
NOTE BOOK	PLOTTED	BY
AREAS CHECKED	TEMPLATE	
	AREAS CHECKED	

ORIGINAL SURVEY NO.	SURVEYED	DATE
NOTE BOOK	PLOTTED	BY
AREAS CHECKED	TEMPLATE	
	AREAS CHECKED	

MODEL: Defnair
 FILE NAME: D:\ILLINOIS\BID\NTEC\Illinois\pwp\WIDOT\Documents\DOT Offices\District 9\Projects\867\CAD\DATA\CAD\Drawings\867\A_xc.dwg



USER NAME = colemm	DESIGNED -	REVISED -
	DRAWN -	REVISED -
PLOT SCALE = 10.0000' / in.	CHECKED -	REVISED -
PLOT DATE = 8/24/2018	DATE -	REVISED -

**STATE OF ILLINOIS
 DEPARTMENT OF TRANSPORTATION**

CROSS SECTIONS

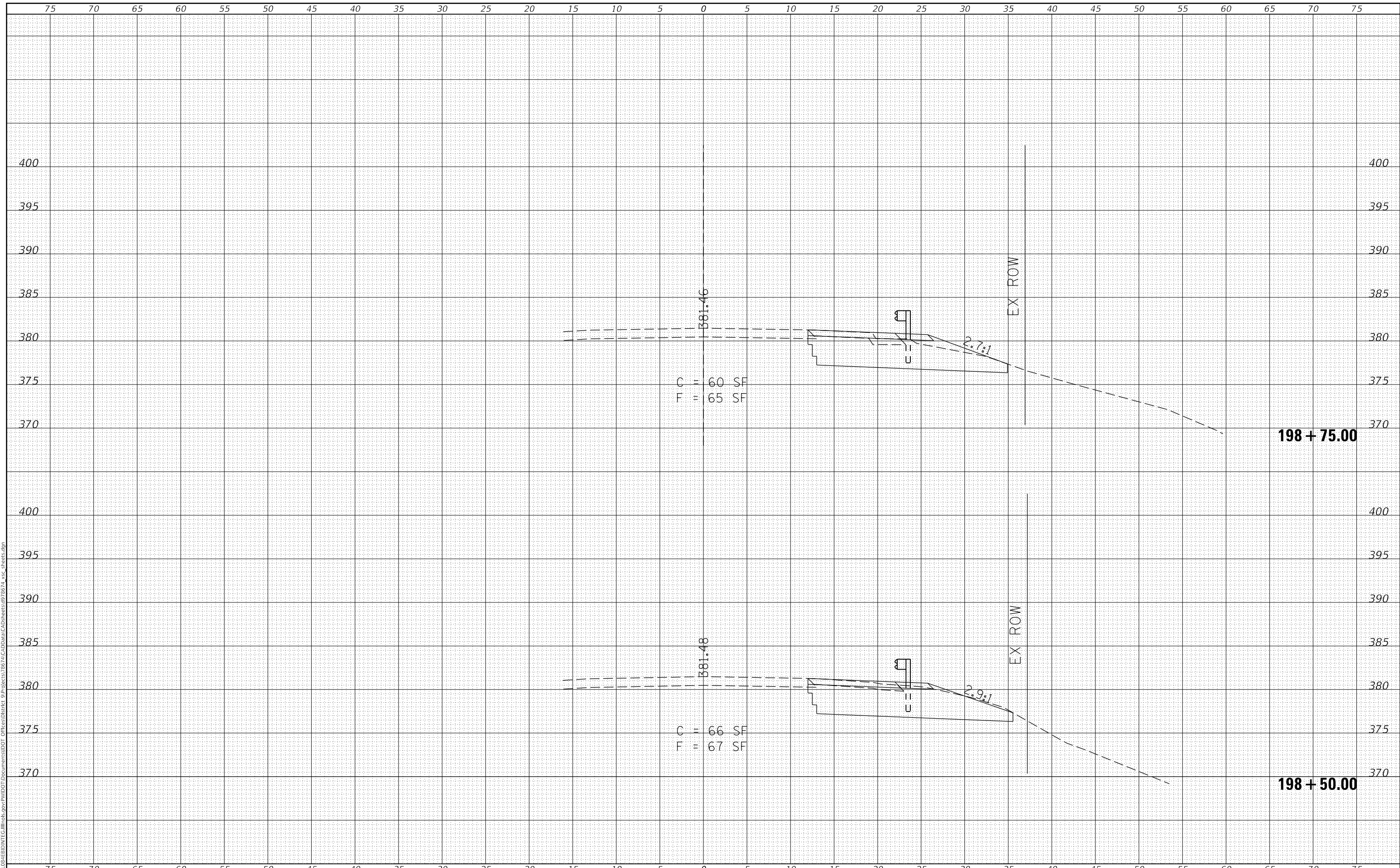
SCALE: SHEET OF SHEETS STA. 198+00.00 TO STA. 198+25.00

F.A.P. RTE. 322	SECTION 35LP-1	COUNTY JACKSON	TOTAL SHEETS 18	SHEET NO. 15
CONTRACT NO. 78674				
ILLINOIS FED. AID PROJECT				

FINAL SURVEY NO.	SURVEYED	DATE
NOTE BOOK	PLOTTED	
	TEMPLATE	
	AREAS CHECKED	

ORIGINAL SURVEY NO.	SURVEYED	DATE
NOTE BOOK	PLOTTED	
	TEMPLATE	
	AREAS CHECKED	

MODEL: Defn.rvt
 FILE NAME: D:\ILLINOIS\BID\NTEC\Illinois.pwr\PROJECTS\8674\CAD\DATA\CAD\Drawings\8674_xsec.dwg



USER NAME = colemm	DESIGNED -	REVISED -
	DRAWN -	REVISED -
PLOT SCALE = 10.0000' / in.	CHECKED -	REVISED -
PLOT DATE = 8/24/2018	DATE -	REVISED -

**STATE OF ILLINOIS
 DEPARTMENT OF TRANSPORTATION**

CROSS SECTIONS

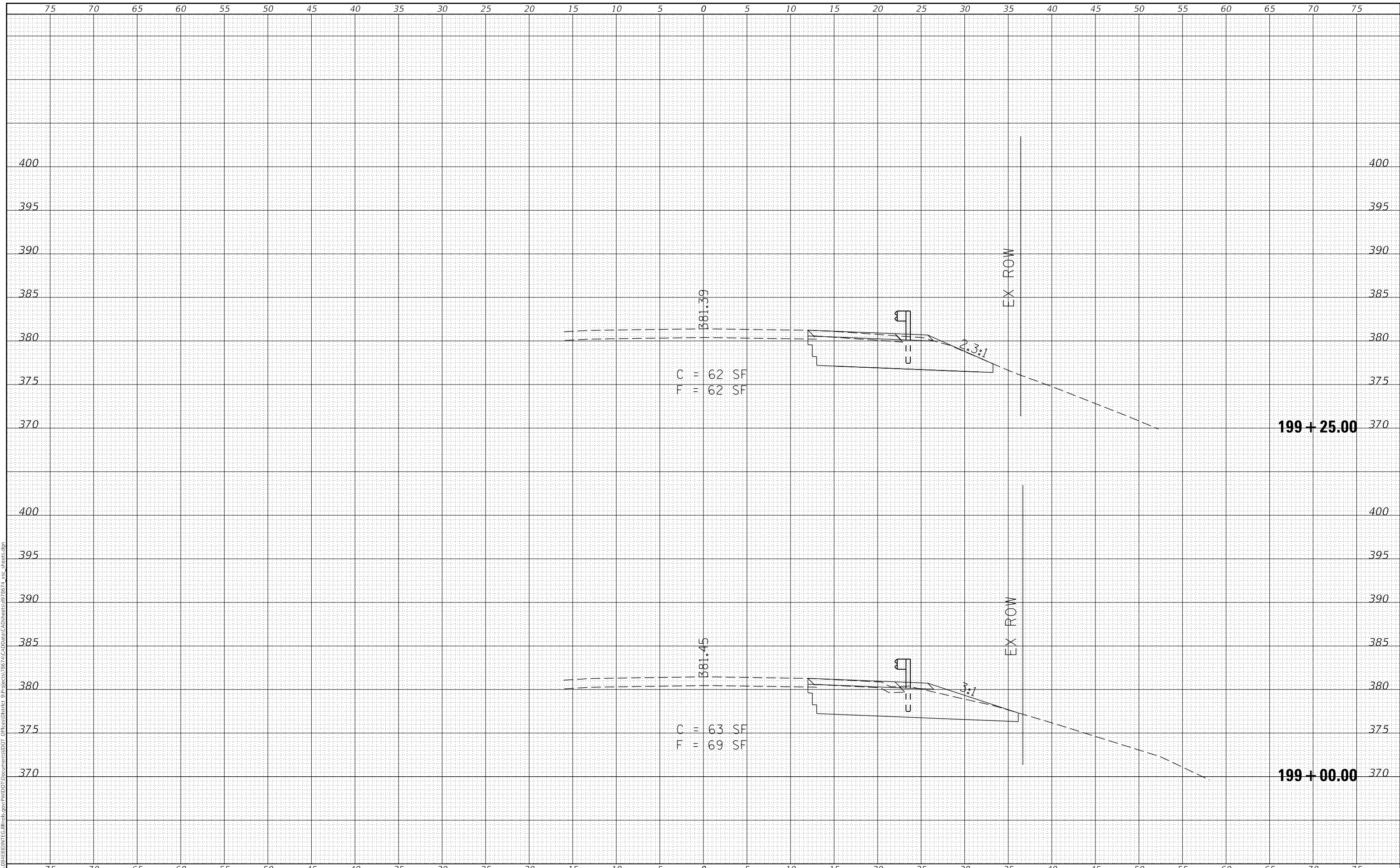
SCALE: SHEET OF SHEETS STA. 198+50.00 TO STA. 198+75.00

F.A.P. RTE. 322	SECTION 35LP-1	COUNTY JACKSON	TOTAL SHEETS 18	SHEET NO. 16
CONTRACT NO. 78674				
ILLINOIS FED. AID PROJECT				

FINAL SURVEY NO.	SURVEYED	DATE
NOTE BOOK	PLOTTED	BY
AREAS CHECKED	TEMPLATE	
	AREAS CHECKED	

ORIGINAL SURVEY NO.	SURVEYED	DATE
NOTE BOOK	PLOTTED	BY
AREAS CHECKED	TEMPLATE	
	AREAS CHECKED	

MODEL: Defaulr
 FILE NAME: D:\ILLINOIS\BID\NTE\Illinois\pwp\WIDOT\Documents\DOT Office\District 9\Projects\8674\CAD\DATA\CAD\Drawings\8674_xsec.dwg



USER NAME = colemm	DESIGNED -	REVISED -
	DRAWN -	REVISED -
PLOT SCALE = 10.0000' / in.	CHECKED -	REVISED -
PLOT DATE = 8/24/2018	DATE -	REVISED -

**STATE OF ILLINOIS
 DEPARTMENT OF TRANSPORTATION**

CROSS SECTIONS

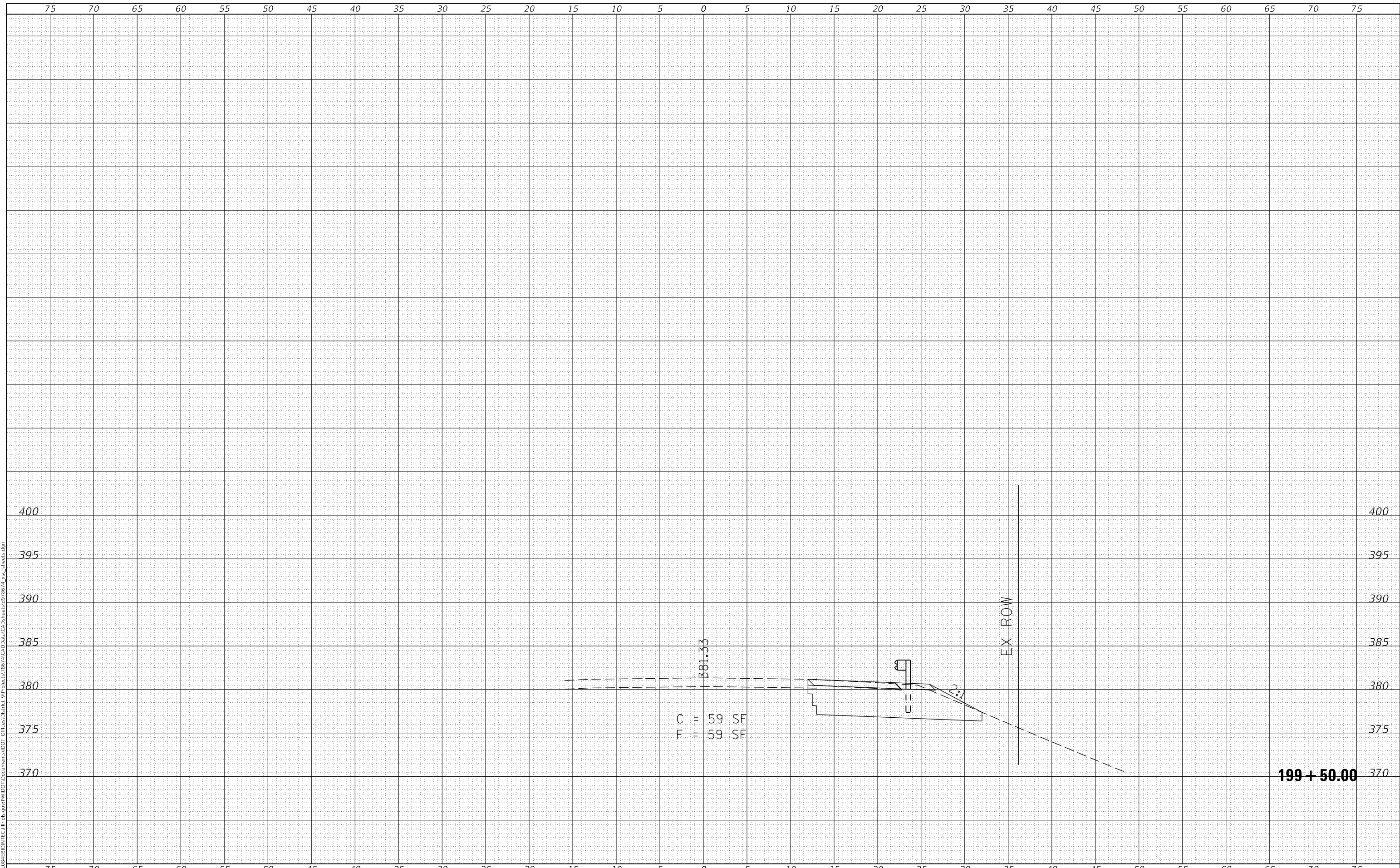
SCALE: SHEET OF SHEETS STA. 199+00.00 TO STA. 199+25.00

F.A.P. RTE.	SECTION	COUNTY	TOTAL SHEETS	SHEET NO.
322	3SLP-1	JACKSON	18	17
CONTRACT NO. 78674				
ILLINOIS FED. AID PROJECT				

FINAL SURVEY NO.	SURVEYED	DATE
NOTE BOOK	PLOTTED	
NO.	TEMPLATE	
	AREAS CHECKED	

ORIGINAL SURVEY NO.	SURVEYED	DATE
NOTE BOOK	PLOTTED	
NO.	TEMPLATE	
	AREAS CHECKED	

MODEL: Defnair
 FILE NAME: D:\ILLINOIS\BID\NTE\Illinois\pwp\WIDOT\Documents\DOT Offices\District 9\Projects\867\CAD\DATA\CAD\Drawings\867\A_xc.dwg



USER NAME = colemm	DESIGNED -	REVISED -
	DRAWN -	REVISED -
PLOT SCALE = 10.0000' / in.	CHECKED -	REVISED -
PLOT DATE = 8/24/2018	DATE -	REVISED -

**STATE OF ILLINOIS
 DEPARTMENT OF TRANSPORTATION**

CROSS SECTIONS

SCALE: SHEET OF SHEETS STA. 199+50.00 TO STA. 199+50.00

F.A.P. RTE.	SECTION	COUNTY	TOTAL SHEETS	SHEET NO.
322	3SLP-1	JACKSON	18	18
CONTRACT NO. 78674				
ILLINOIS FED. AID PROJECT				