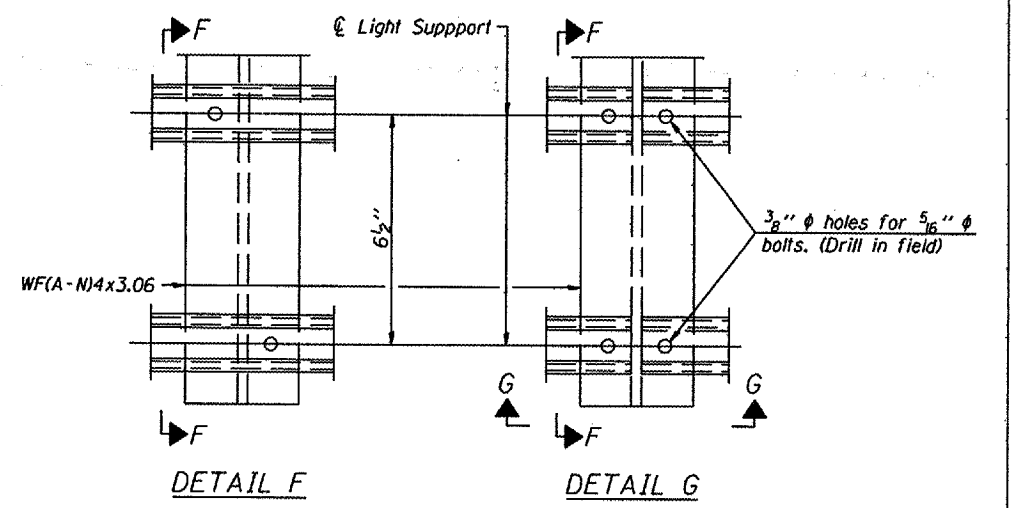


① Install standard force-fit end caps or weld 1/8" end plates with 1/8" c.f.w. and grind smooth. (All rail ends)

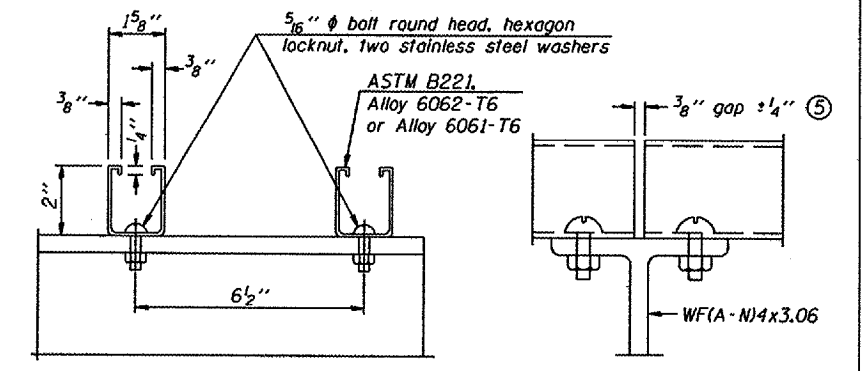
Fittings-ASTM B26, Alloy 356-T7 or 1/2" diameter aluminum pipe

② Horizontal handrail member shall be continuous thru fitting. Provide 1/16" diameter hole in fitting for 3/8" diameter bolt. Field drill 1/16" diameter hole in horizontal rail member. Provide locknut and two stainless steel washers for bolt. (Use 5/16" eyebolts in 7/16" diameter holes on top rail at ends only.)



DETAIL F

DETAIL G

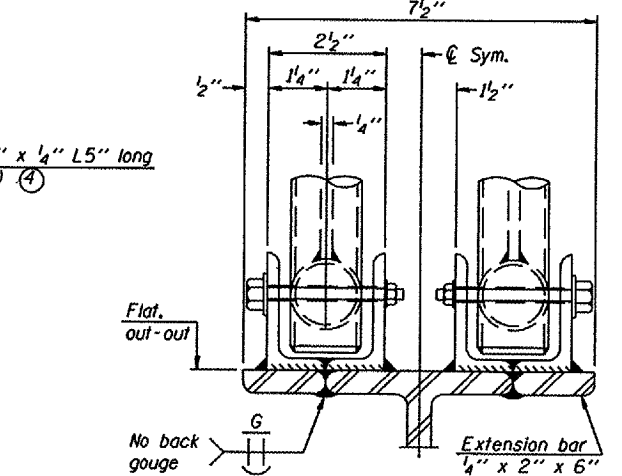
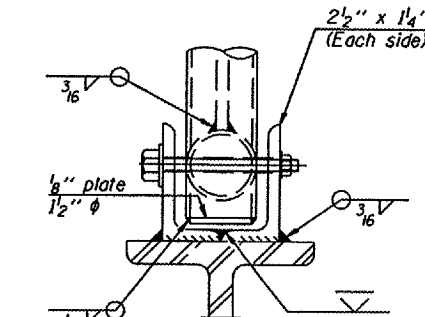
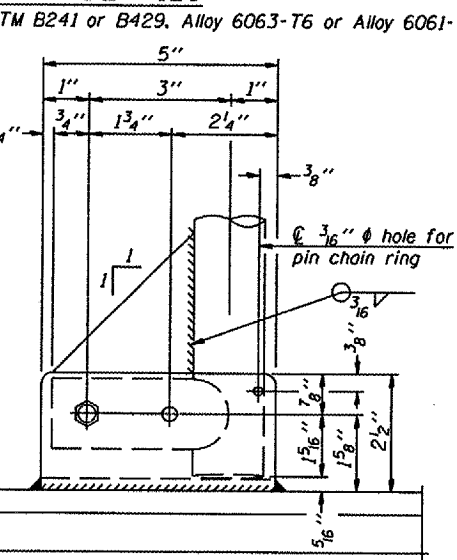
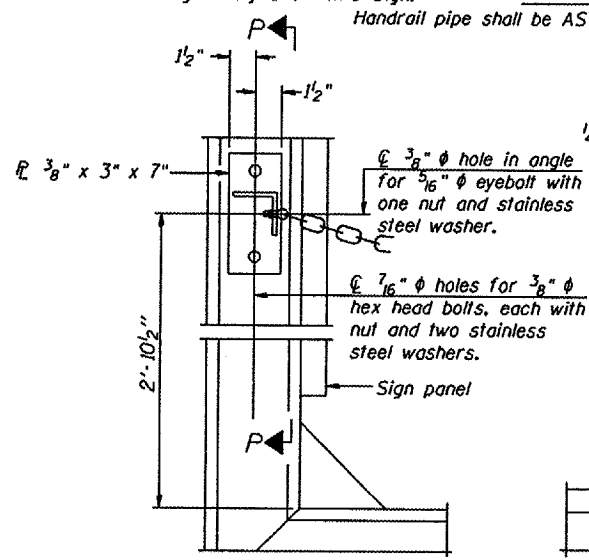


SECTION F-F

SECTION G-G

LIGHTING FIXTURE MOUNTS (IF REQUIRED)

⑤ Field cut ends of light support channels shall be free of burrs or hazardous projections and coated with zinc-rich primer or equivalent.



ALTERNATE SAFETY CHAIN ATTACHMENT

SIDE ELEVATION

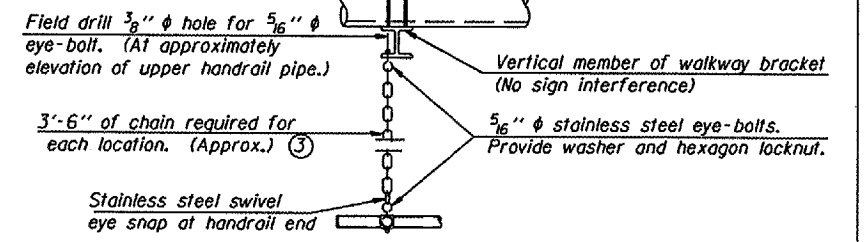
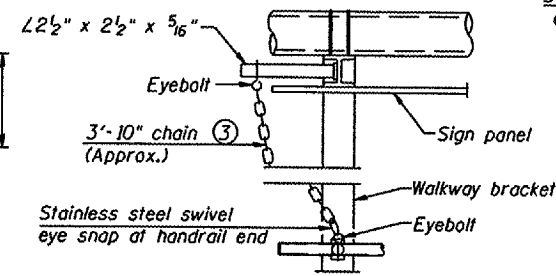
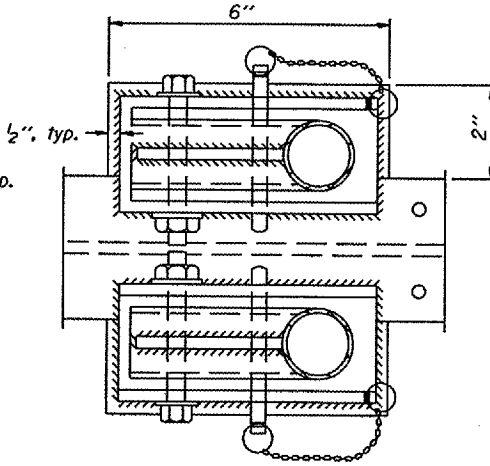
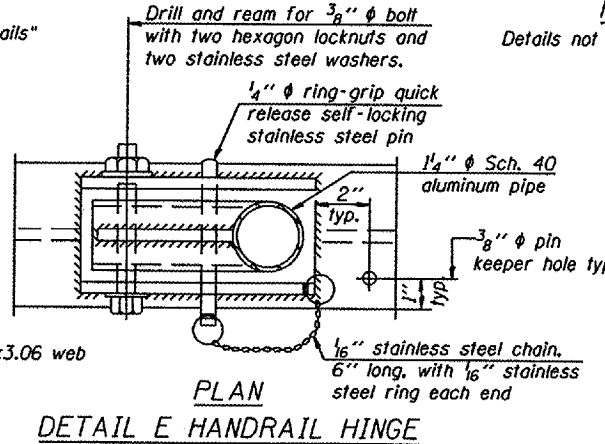
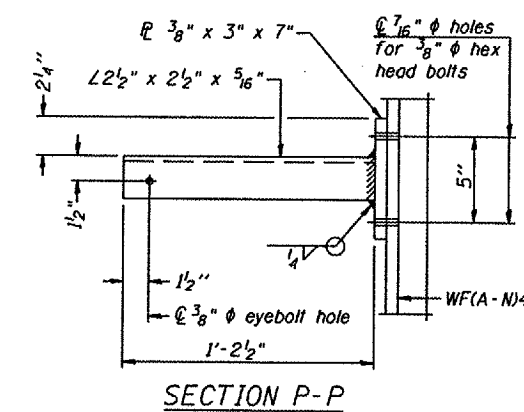
FRONT ELEVATION

ELEVATION AT HANDRAIL JOINT

(With Sign Present)  
Items not shown same as "Side Elevation" of "Handrail Details"

Details not shown same as "ELEVATION" at right.

Details not shown same as "FRONT ELEVATION"



CANTILEVER SIGN STRUCTURES  
HANDRAIL DETAILS  
ALUMINUM TRUSS & STEEL POST

DESIGNED -	20
CHECKED -	EXAMINED
DRAWN -	PASSED
CHECKED -	ENGINEER OF BRIDGE DESIGN
	ENGINEER OF BRIDGES AND STRUCTURES

OSC-A-8 6/01/2007

NUMBER	REVISION	DATE

PLAN AT HANDRAIL JOINT  
Details not shown same as "PLAN"

ALTERNATE SAFETY CHAIN ATTACHMENT  
Details not shown similar to "Safety Chain" Details  
(Walkway omitted for clarity)

③ 3/16" Type 304L stainless steel chain, approximately 12 links per foot.

④ Extrusions may be used in lieu of the details shown, with approval of the Engineer.

This Sheet For Information Only

District 2  
Overhead Sign Structure  
Repair & Replacement