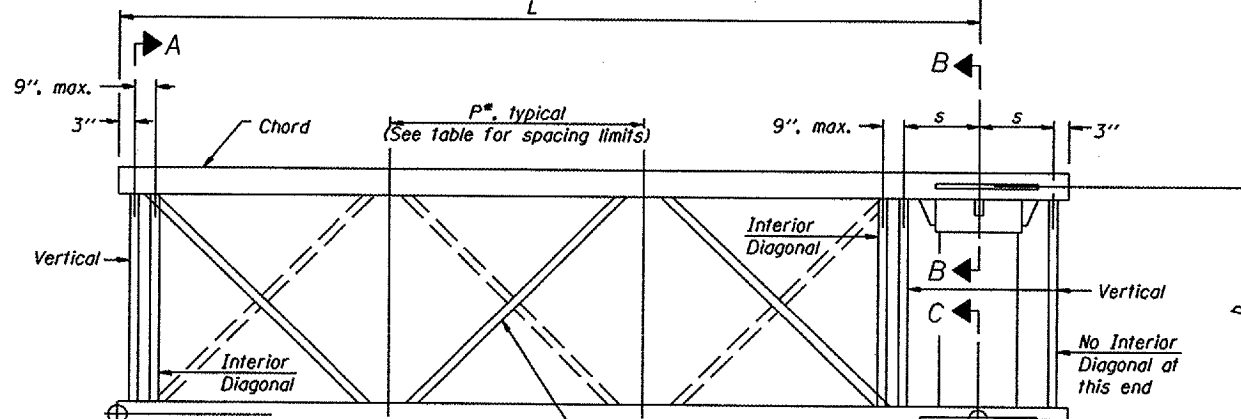
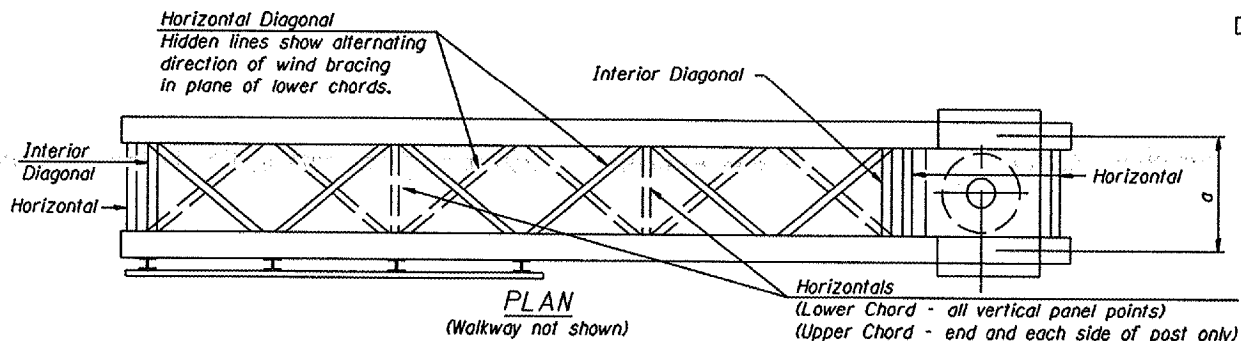


STATE OF ILLINOIS  
DEPARTMENT OF TRANSPORTATION

Various Routes  
OVD SIN STR REP & REPL 2008-9  
Various Counties  
Sheet 52 of 105  
Contract Number 44973

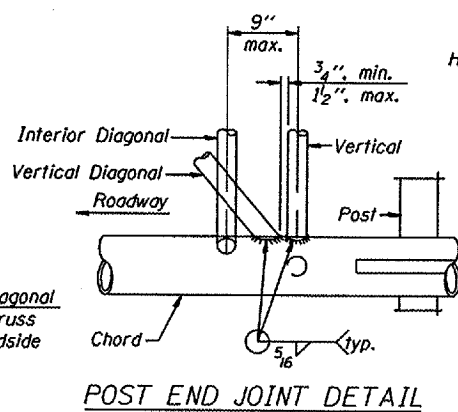


**ELEVATION**  
(Sign and walkway omitted for clarity)

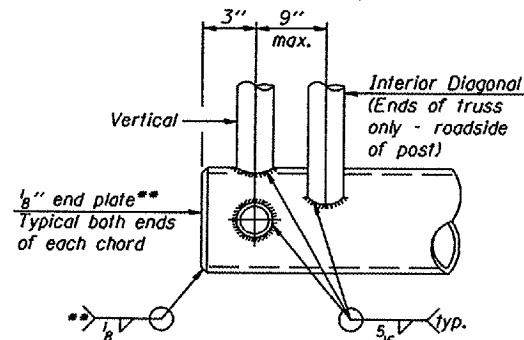
**TYPICAL TRUSS UNIT**

For Section B-B and Section C-C, see Base Sheet OSC-A-3.

Note:  
There are twice as many horizontal diagonals as there are vertical diagonals.



**POST END JOINT DETAIL**



**CANTILEVER END JOINT DETAIL**

\*\* Contractor may alternatively use standard aluminum drive-fit cap to close ends.

DESIGNED -		20
CHECKED -	EXAMINED	
DRAWN -	PASSED	ENGINEER OF BRIDGE DESIGN
CHECKED -		ENGINEER OF BRIDGES AND STRUCTURES

OSC-A-2

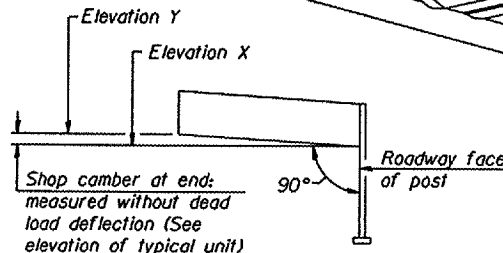
6/01/2007

**SHOP CAMBER TABLE**

Unit Length (L)	Shop Camber at End
15'	1 1/2"
16'-17'	1 3/4"
18'-20'	2"
21'-22'	2 1/4"
23'-25'	2 1/2"
26'-27'	2 3/4"
28'-30'	3"
31'-32'	3 1/4"
33'-35'	3 1/2"
36'-37'	4"
38'-40'	4 1/2"

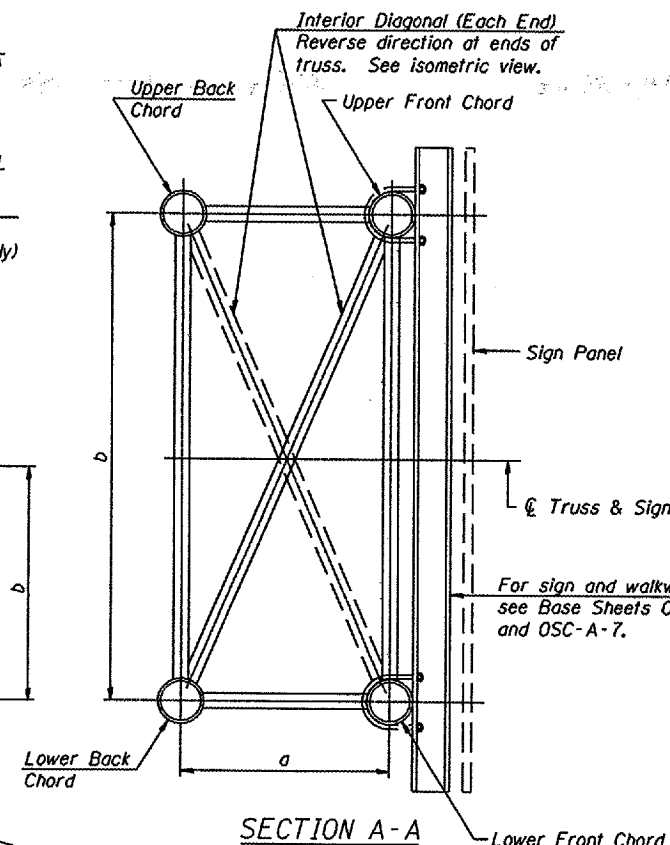
**CAMBER DIAGRAM**

(For Fabrication Only)

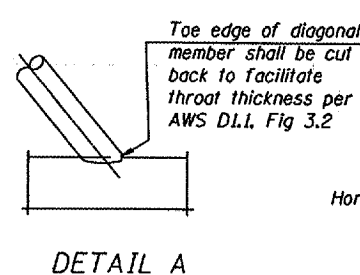


Truss Type	Dimension "a"	Dimension "b"	Dimension "s"	Limits for Panel Spacing (P)*	Up. & Low. Chord		Verticals, Horizontals, Vertical, Horizontal, and Interior Diagonals	
					O.D.	Wall	O.D.	Wall
I-C-A	24"	54"	16"	36" min. to 48" max.	5"	5/16"	2 1/2"	5/16"
II-C-A	36"	66"	21"	42" min. to 54" max.	6 1/2"	5/16"	3 1/4"	5/16"
III-C-A (35' Max.)	36"	84"	21"	48" min. to 66" max.	7"	3/8"	3 1/2"	3/8"
III-C-A (>35' to 40')	36"	84"	21"	48" min. to 66" max.	8"	3/8"	3 1/2"	3/8"

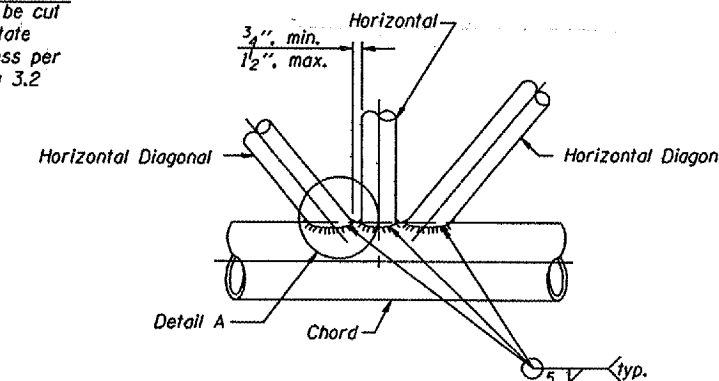
\*P =  $\frac{L \cdot s \cdot 3''}{\# \text{ Panels}}$



**SECTION A-A**



**DETAIL A**



**TRUSS INTERIOR JOINT DETAIL**

Structure Number	Station	Truss Type	Design Length (L)	Number of Panels Per Unit	Panel Length (P)*
3C0531055R192.8	719 + 82	II-C-A	30' - 0"	7	4' - 0"
3C0531055L194.4	804 + 17	II-C-A	30' - 0"	7	4' - 0"

NUMBER	REVISION	DATE

CANTILEVER SIGN STRUCTURES  
TRUSS DETAILS  
ALUMINUM TRUSS & STEEL POST

District 3  
Overhead Sign Structure  
Repair & Replacement