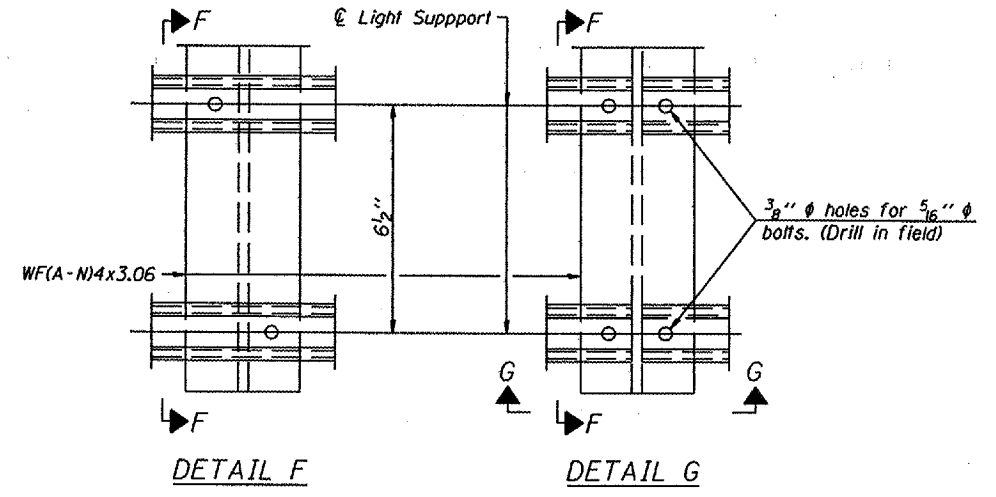


① Install standard force-fit end caps or weld 1/8" end plates with 1/8" c.f.w. and grind smooth. (All rail ends)

② Horizontal handrail member shall be continuous thru fitting. Provide 1/16" hole in fitting for 3/8" bolt. Field drill 1/16" hole in horizontal rail member. Provide locknut and two stainless steel washers for bolt. (Use 5/16" eyebolts in 7/16" holes on top rail at ends only.)



SIDE ELEVATION  
(Showing Safety Chain W/O Sign)

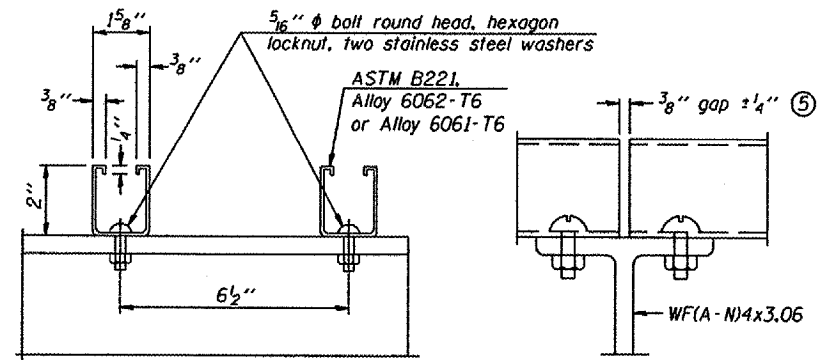
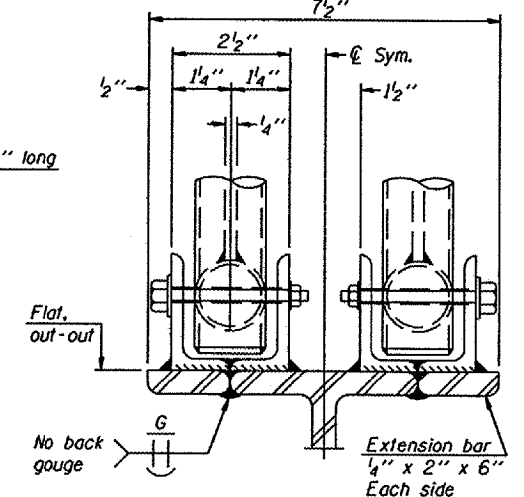
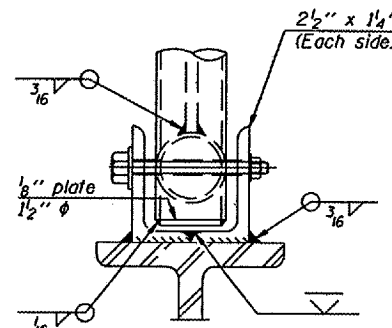
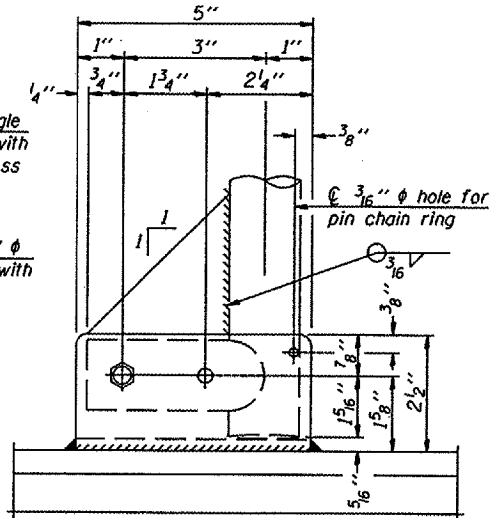
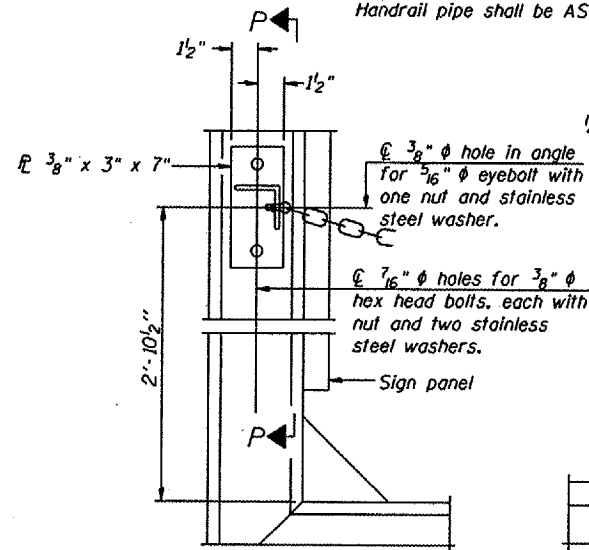
HANDRAIL DETAILS

FRONT ELEVATION

DETAIL F

DETAIL G

Handrail pipe shall be ASTM B241 or B429, Alloy 6063-T6 or Alloy 6061-T6.



SECTION F-F  
SECTION G-G  
LIGHTING FIXTURE MOUNTS (IF REQUIRED)

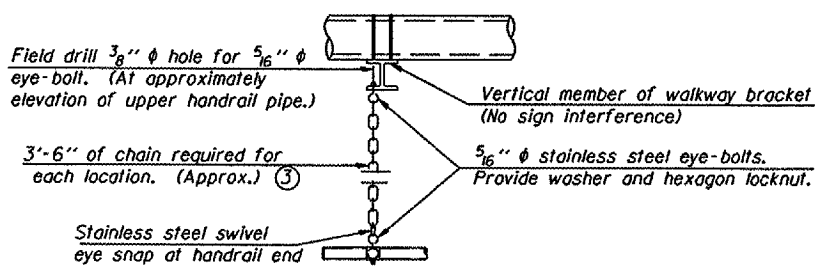
⑤ Field cut ends of light support channels shall be free of burrs or hazardous projections and coated with zinc-rich primer or equivalent.

ALTERNATE SAFETY CHAIN ATTACHMENT

SIDE ELEVATION

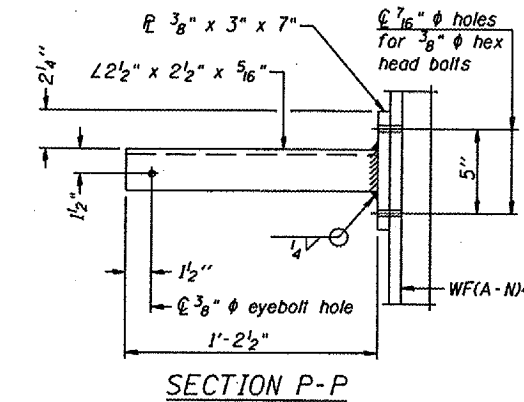
FRONT ELEVATION

ELEVATION AT HANDRAIL JOINT

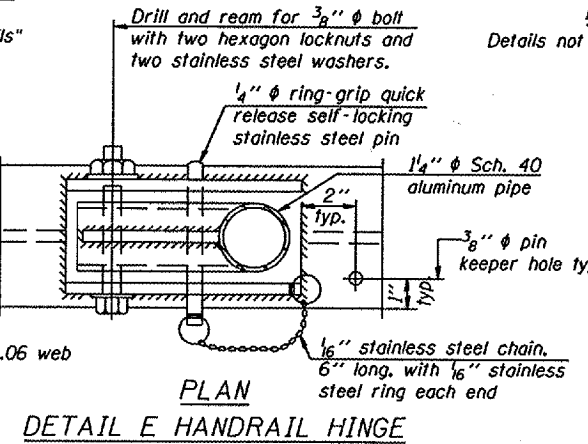


SAFETY CHAIN

One required for each end of each walkway.



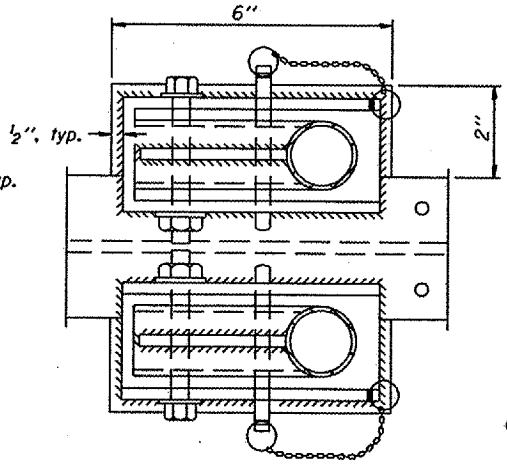
SECTION P-P



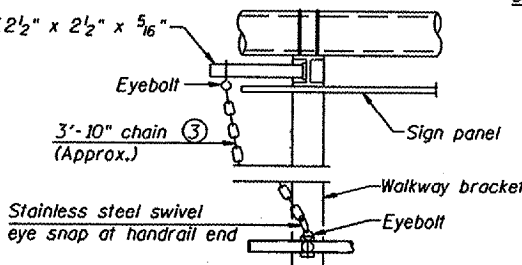
PLAN  
DETAIL E HANDRAIL HINGE

Details not shown same as "ELEVATION" at right.

Details not shown same as "FRONT ELEVATION"



PLAN AT HANDRAIL JOINT  
Details not shown same as "PLAN"



ALTERNATE SAFETY CHAIN ATTACHMENT  
Details not shown similar to "Safety Chain" Details  
(Walkway omitted for clarity)

③ 3/16" Type 304L stainless steel chain, approximately 12 links per foot.

④ Extrusions may be used in lieu of the details shown, with approval of the Engineer.

DESIGNED -	20
CHECKED -	EXAMINED
DRAWN -	PASSED
CHECKED -	ENGINEER OF BRIDGE DESIGN
	ENGINEER OF BRIDGES AND STRUCTURES

NUMBER	REVISION	DATE

CANTILEVER SIGN STRUCTURES  
HANDRAIL DETAILS  
ALUMINUM TRUSS & STEEL POST  
  
District 4  
Overhead Sign Structure  
Repair & Replacement