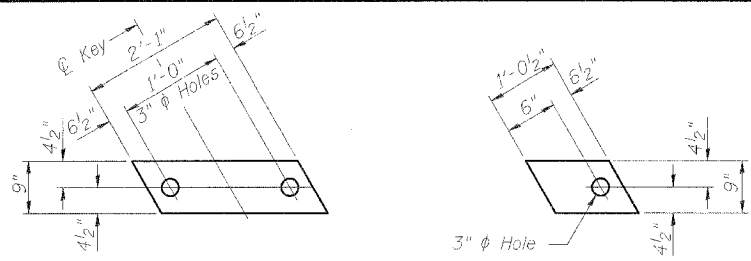


STATE OF ILLINOIS  
DEPARTMENT OF TRANSPORTATION

ROUTE NO. F.A.P. 368	SECTION 1919 VB-R-1	CO. KEY Cook	FOURTH SHEET 47	SHEET NO. 18	SHEET NO. 9 28 SHEETS
----------------------------	---------------------------	-----------------	--------------------	-----------------	--------------------------

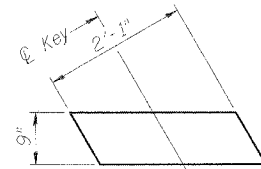
Contract # 60C11



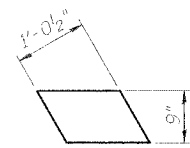
**FABRIC BEARING PAD**  
(Interior)

**FABRIC BEARING PAD**  
(Exterior)

**FIXED**

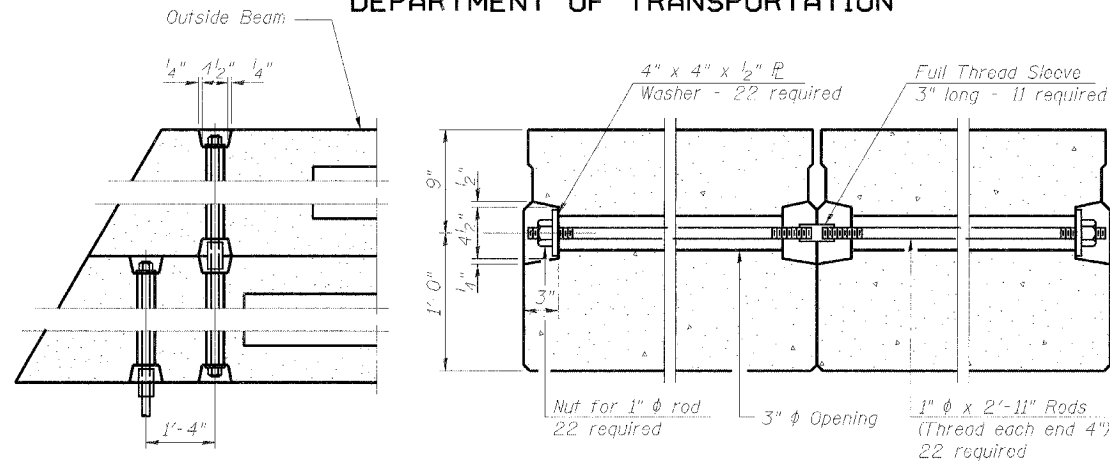


**FABRIC BEARING PAD**  
(Interior)

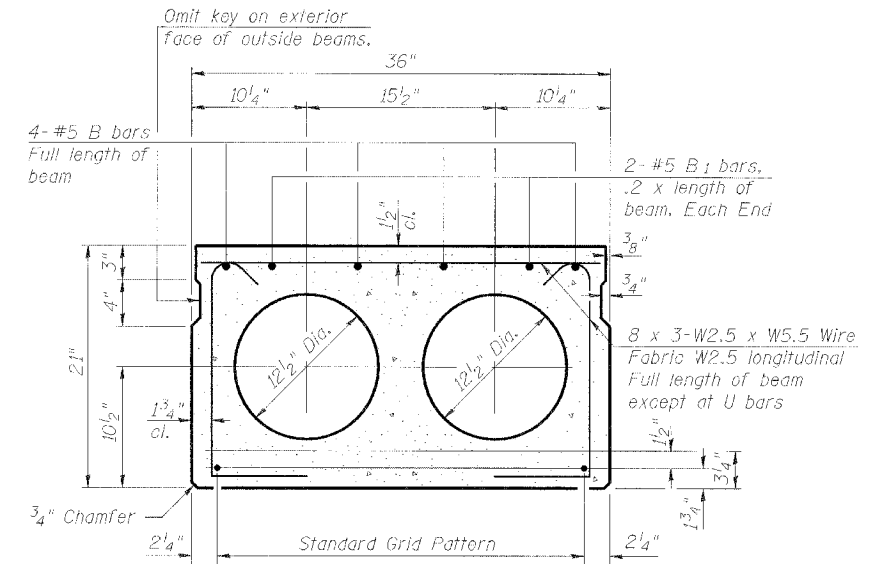


**FABRIC BEARING PAD**  
(Exterior)

**EXPANSION**

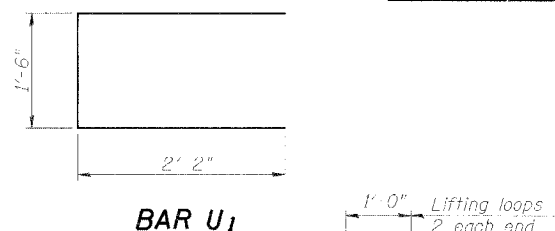


**TYPICAL TRANSVERSE TIE ASSEMBLY**

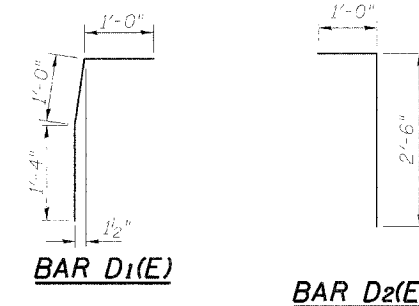


**TYPICAL SECTION**

10 - 1/2"  $\phi$  Strands, Each Strand Stressed to 30,900 Lbs.  
6 - Strands 1 3/4" up, 4 - Strands 3/4" up  
Note: Place strands symmetrically about  $\phi$  of beam.

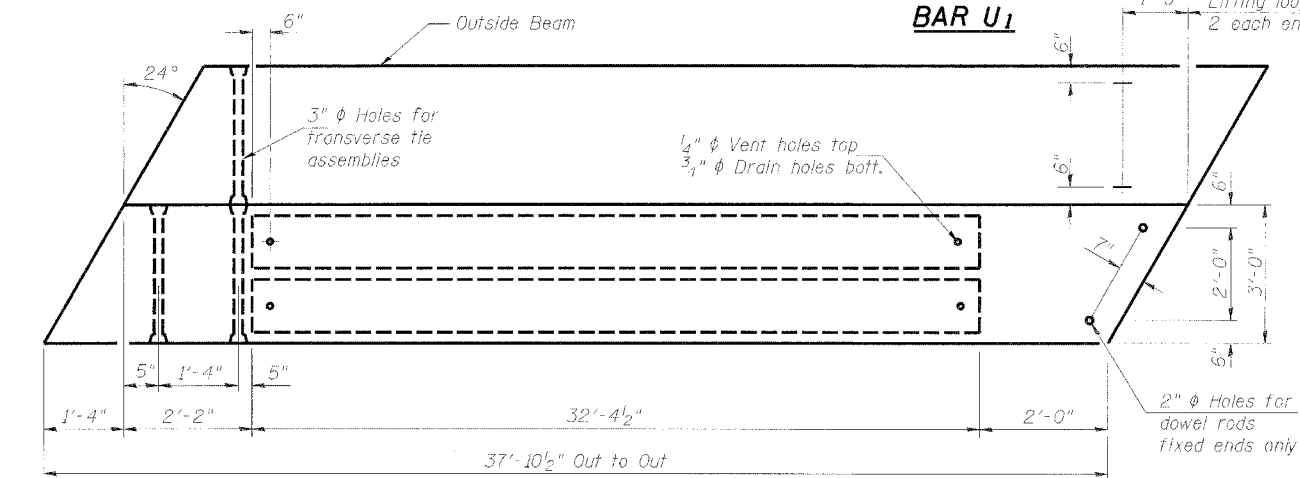


**BAR U1**

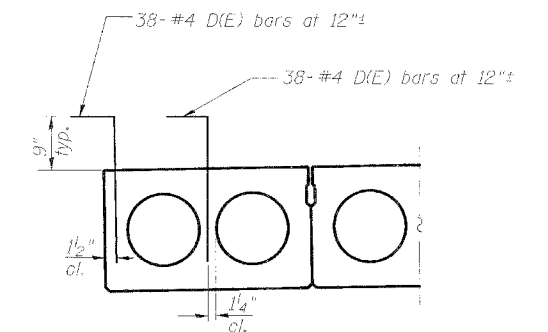


**BAR D1(E)**

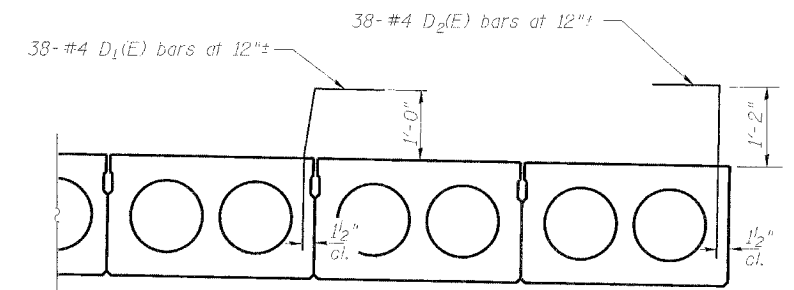
**BAR D2(E)**



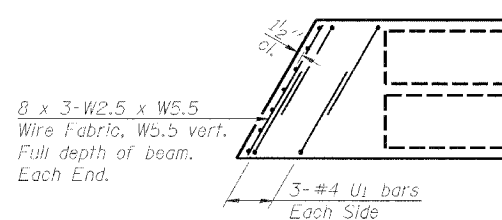
**PLAN**



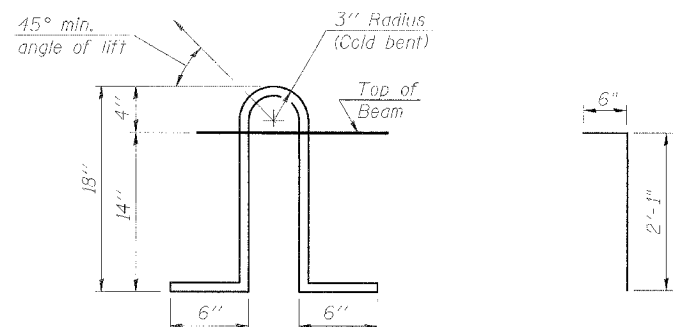
**SECTION THRU WEST EXTERIOR BEAMS**



**SECTION THRU EAST EXTERIOR BEAMS**



**END PLAN**



**LIFTING LOOP DETAIL**

**BAR D1(E)**

**NOTES**

Prestressing steel shall be uncoated high strength, low relaxation 7-wire strand, Grade 270. The nominal diameter shall be 1/2" and the nominal cross-sectional area shall be 0.153 sq. in. Lifting loops shall be 2-1/2"  $\phi$  270 ksi strands, as shown. The 1"  $\phi$  rods in the transverse tie assembly shall be tightened to a snug fit and the threads set. Pockets that receive transverse tie bar on outside shall be filled with grout after transverse tie assembly is in place. Non prestressing steel shall conform to ASTM A 706 (IL MOD), Grade 60. The bearing seat surfaces shall be adjusted by shimming to assure firm and even bearing. Two 1/8" fabric adjusting shims of the dimensions of the Exterior Bearing Pad shall be provided for each bearing. Keyway surfaces shall be cleaned to remove form oil or other bond breaking material prior to shipment of the beams. Cleaning shall be done by sandblasting the keyway areas between top of the beam and the bottom edge of the key. Corrosion Inhibitor, per Article 1020.05(b)(12) of the Standard Specifications, shall be used in the concrete for precast prestressed concrete deck beams. Required Release Strength, f'ci, shall be 4000 p.s.i.

**BILL OF MATERIAL**

Precast Prestressed Conc. Deck Bms. (21" Depth)	Sq. Ft.	1364
---	---------	------

**SUPERSTRUCTURE DETAILS: SPAN 1**  
**F.A.P. 368 (PULASKI ROAD)**  
**OVER BRC RAILROAD,**  
**SECTION 1919 VB-R-1,**  
**COOK COUNTY, STA. 17+81.60**  
**STRUCTURE NO. 016-1020**

**STS Consultants**  
111 NE Jefferson Ave.  
Peoria, Illinois 61602  
PH: (309) 676-8464  
FAX: (309) 676-5445  
IL Design Firm Reg. No. 184-001518

DESIGNED	DDB
CHECKED	IV
DRAWN	MGM
CHECKED	DDB