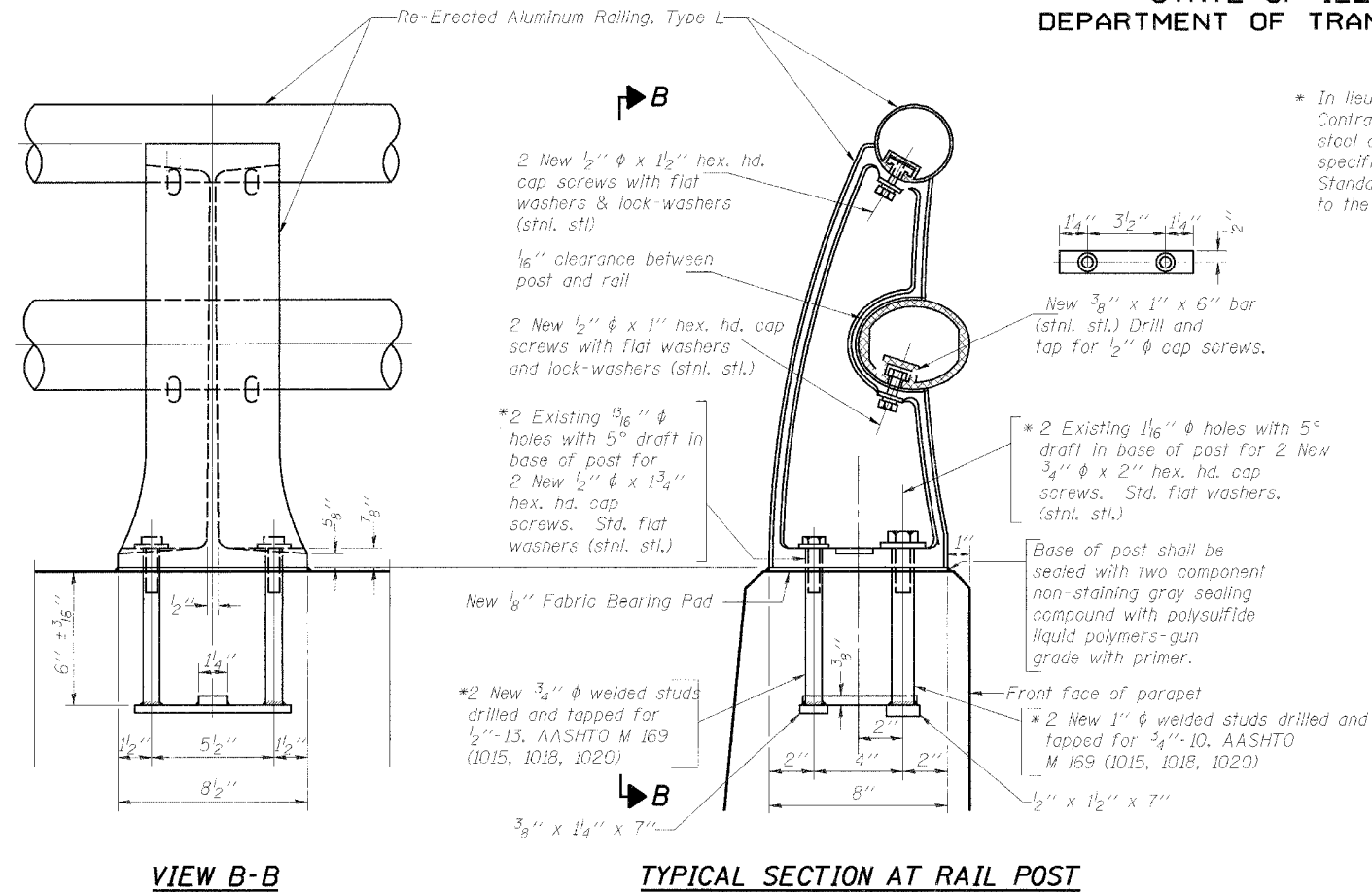


STATE OF ILLINOIS
DEPARTMENT OF TRANSPORTATION

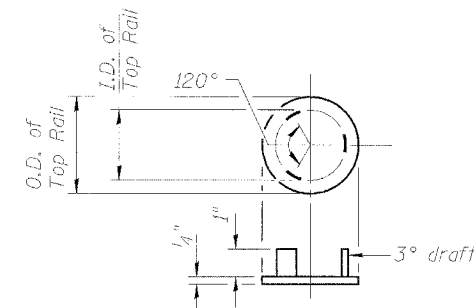
ROUTE NO. F.A.P. 368	SECTION 1919 VB-R-1	COUNTY Cook	JOINT SHEETS 47	SHEET NO. 33	SHEET NO. 21 28 SHEETS
FED. ROAD DIST. NO. 7		ILLINOIS		FED. AID PROJECT	

Contract # 60C11



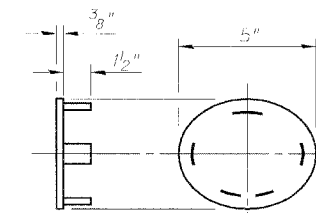
RAIL POST DETAILS

* In lieu of the cast-in-place anchor device shown, the Contractor has the option of drilling and setting stainless steel anchor rods of the same diameter and grade as the specified cap screws according to Article 509.06 of the Standard Specifications. Embedment shall be according to the manufacturer's specifications.



NEW CAST END CAP

Included in cost of Removing and Re-erecting Existing Railing For Top Rail (2 Required)



NEW CAST END CAP

Included in cost of Removing and Re-erecting Existing Railing For Bottom Rail DRIVE FIT TYPE (2 Required)

BILL OF MATERIAL

Item	Unit	Quantity
Removing and Re-erecting Existing Railing.	Foot	297

RAILING

F.A.P. 368 (PULASKI ROAD)
OVER BRC RAILROAD,
SECTION 1919 VB-R-1,
COOK COUNTY, STA. 17+81.60
STRUCTURE NO. 016-1020

Notes:

- All Posts shall be normal to parapet.
- Provide 1-1/8" and 2-1/8" Aluminum Shims for 25% of the Posts. Rail elements shall be parallel to Grade high spots will be ground and low spots shimmed.
- See sheet 21 of 28 for rail post spacing.
- See Special Provision for Removing and Re-erecting Existing Railing.

DESIGNED	DDB
CHECKED	LLV
DRAWN	MGM
CHECKED	DDB

(7'-0" to 10'-0" Post spacing)

STS Consultants
111 NE Jefferson Ave.
Peoria, Illinois 61602
Ph(309)676-8464
FAX(309)676-5445
IL Design Firm Reg. No. 184-001518