

F.A.P. RTE.	SECTION	COUNTY	TOTAL SHEETS	SHEET NO.
337	2007-014DM	LAKE&DUPAGE	18	1

CONTRACT NO. 60C51

STATE OF ILLINOIS
DEPARTMENT OF TRANSPORTATION
DIVISION OF HIGHWAYS

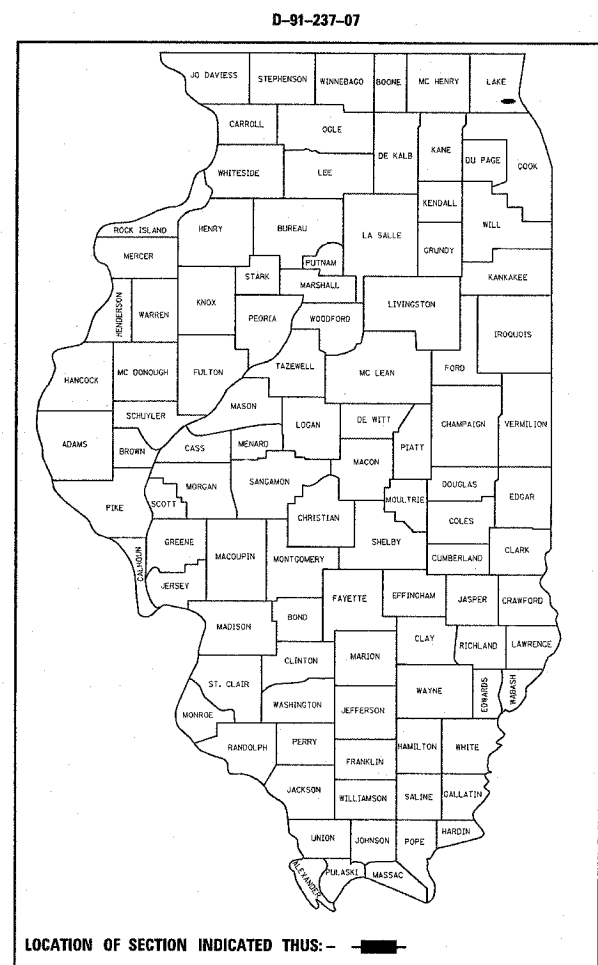
**PROPOSED
HIGHWAY PLANS**

**F.A.P. 337 /IL 22 (HALF DAY RD.)
US 45 /IL 21 TO I-94 (TRI-STATE TOLLWAY)
SECTION: 2007-014DM
BUILDING DEMOLITION
LAKE COUNTY & DUPAGE COUNTY
C-91-237-07**

FOR INDEX OF SHEETS, SEE SHEET NO. 3

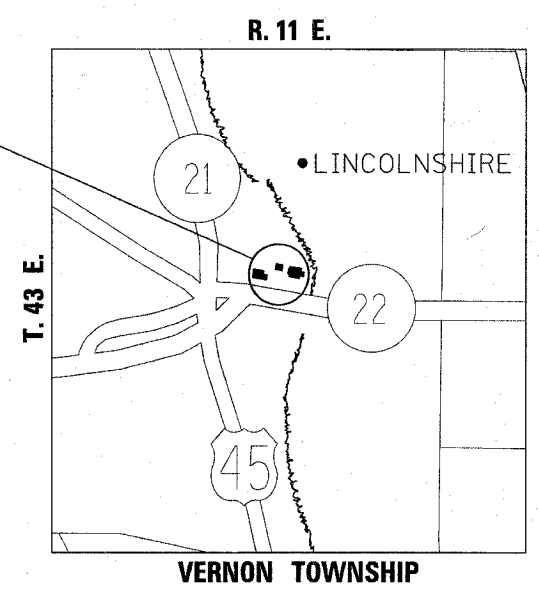
DESCRIPTION OF IMPROVEMENT:
DEMOLITION OF TWO SINGLE FAMILY TWO-STORY LOG CABINS, ONE GARAGE AND ONE FORMER OUT BUILDING LOCATED AT 14736 AND 14746 HALF DAY ROAD IN LINCOLNSHIRE.

**IMPROVEMENT LOCATED IN
THE VILLAGE OF LINCOLNSHIRE**

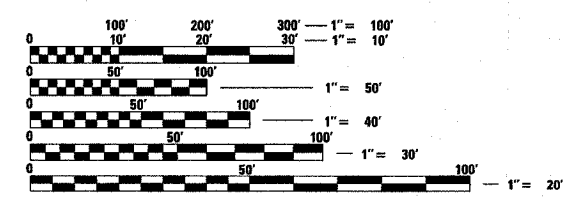


DISTRICT ONE - PLAN PREPARATION ENGINEER: KEN ENG / J. CHANG (847) 705-4432

IMPROVEMENT LOCATION



TRAFFIC DATA:
2005 ADT - 33700
SPEED LIMIT - 35 MPH



FULL SIZE PLANS HAVE BEEN PREPARED USING STANDARD ENGINEERING SCALES. REDUCED SIZED PLANS WILL NOT CONFORM TO STANDARD SCALES. IN MAKING MEASUREMENTS ON REDUCED PLANS, THE ABOVE SCALES MAY BE USED.

J.U.L.I.E.
JOINT UTILITY LOCATION INFORMATION FOR EXCAVATION
1-800-892-0123

CONTRACT NO. 60C51

STATE OF ILLINOIS
DEPARTMENT OF TRANSPORTATION
DIVISION OF HIGHWAYS

SUBMITTED *Sept. 13* 20 *07*

Diane O'Keefe / *CD*
DEPUTY DIRECTOR OF HIGHWAYS, REGION ENGINEER

October 12, 20 07
Eric E. Hansen / *RD*
ENGINEER OF DESIGN AND ENVIRONMENT

October 12, 20 07
Milton R. Sears / *PE RD*
DIRECTOR OF HIGHWAYS, CHIEF ENGINEER

**PRINTED BY THE AUTHORITY
OF THE STATE OF ILLINOIS**