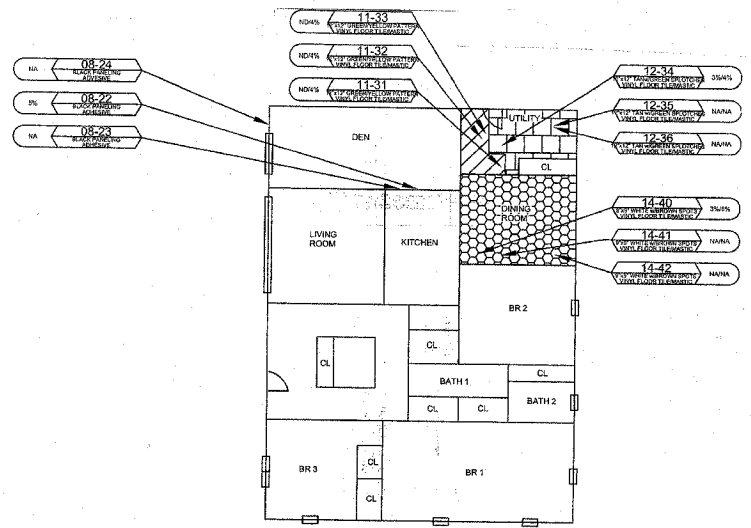
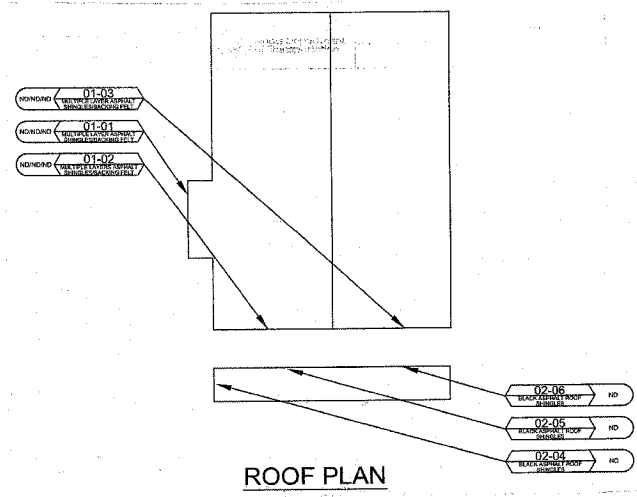


F.A.P. RTE.	SECTION	COUNTY	TOTAL SHEETS	SHEET NO.
*	2007-014DM	LAKE&DUJPAGE	18	11
STA.		TO STA.		
FED. ROAD DIST. NO.	ILLINOIS	FED. AID PROJECT		
* F.A.P. 337		CONTRACT NO. 60C51		
* F.A.P. 432				
* F.A.P. 870				



[Pattern]	GROUP 11 FLOOR TILE MASTIC
[Pattern]	GROUP 12 1/2" x 1/2" DIMENSIONED SPLITCHES W/VEL FLOOR TILE MASTIC
[Pattern]	GROUP 14 1/2" W/VE W/ROW SPOTS W/VEL FLOOR TILE MASTIC

FIRST FLOOR PLAN



ROOF PLAN

# BUILDING #6



ASBESTOS SAMPLE GROUP	3123AV
SAMPLE NUMBER	NTR
MATERIAL DESCRIPTION	
SAMPLE RESULT	

SAMPLE LEGEND	
NA = NOT ANALYZED	
N or ND = NONE DETECTED	
P or PS = POSITIVE	
TR = TRACE	

PARCEL NO. 10J0969	22 W. 376 ROUTE 63	DRAWN: EW	CHECKED: RT	DATE: 07-06-07	FIGURE: 1A
GLEN ELLYN, ILLINOIS 60137		PROJECT NO: 0475A163	SCALE: NTS	WO 258	
ILLINOIS DEPARTMENT OF TRANSPORTATION		2800 SOUTH DIRKSEN PARKWAY			
SPRINGFIELD, ILLINOIS 62764					

REVISIONS	
NAME	DATE

ILLINOIS DEPARTMENT OF TRANSPORTATION  
 BUILDING ASBESTOS LOCATION DETAILS  
 LOCATION 3:  
 F.A.P. RTE. 870 (IL. 53)  
 AT 22W376 S. COLUMBUS  
 IN GLEN ELLYN

SCALE: VERT. \_\_\_\_\_  
 HORIZ. \_\_\_\_\_  
 DATE \_\_\_\_\_

DRAWN BY: P. STEED  
 CHECKED BY \_\_\_\_\_