
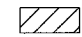
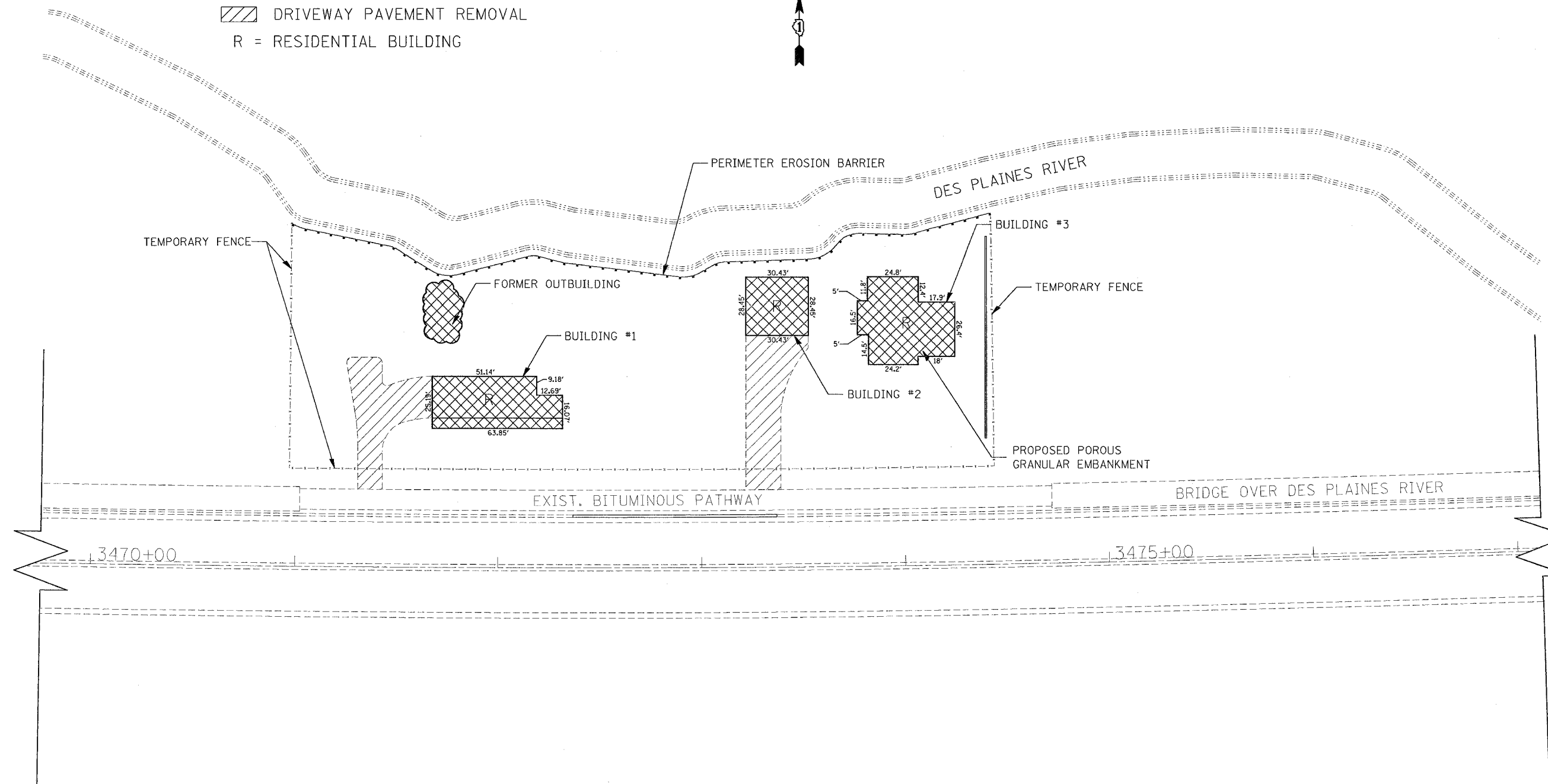


F.A.P. RTE.	SECTION	COUNTY	TOTAL SHEETS	SHEET NO.
*	2007-014DM	LAKE&DU PAGE	18	12
STA.	TO STA.			
FED. ROAD DIST. NO.	ILLINOIS	FED. AID PROJECT		
* F.A.P. 337 F.A.P. 432 F.A.P. 870			CONTRACT NO. 60C51	

REMOVAL ITEMS:

-  BUILDING REMOVAL
-  DRIVEWAY PAVEMENT REMOVAL
- R = RESIDENTIAL BUILDING



REVISIONS		ILLINOIS DEPARTMENT OF TRANSPORTATION EROSION CONTROL PLAN LOCATION 1: F.A.P. RTE. 337/ IL. 22 (HALF DAY RD.) AT 14736 AND 14746 HALF DAY RD.
NAME	DATE	

SCALE: VERT.  
HORIZ.  
DATE  
DRAWN BY: P. STEED  
CHECKED BY: