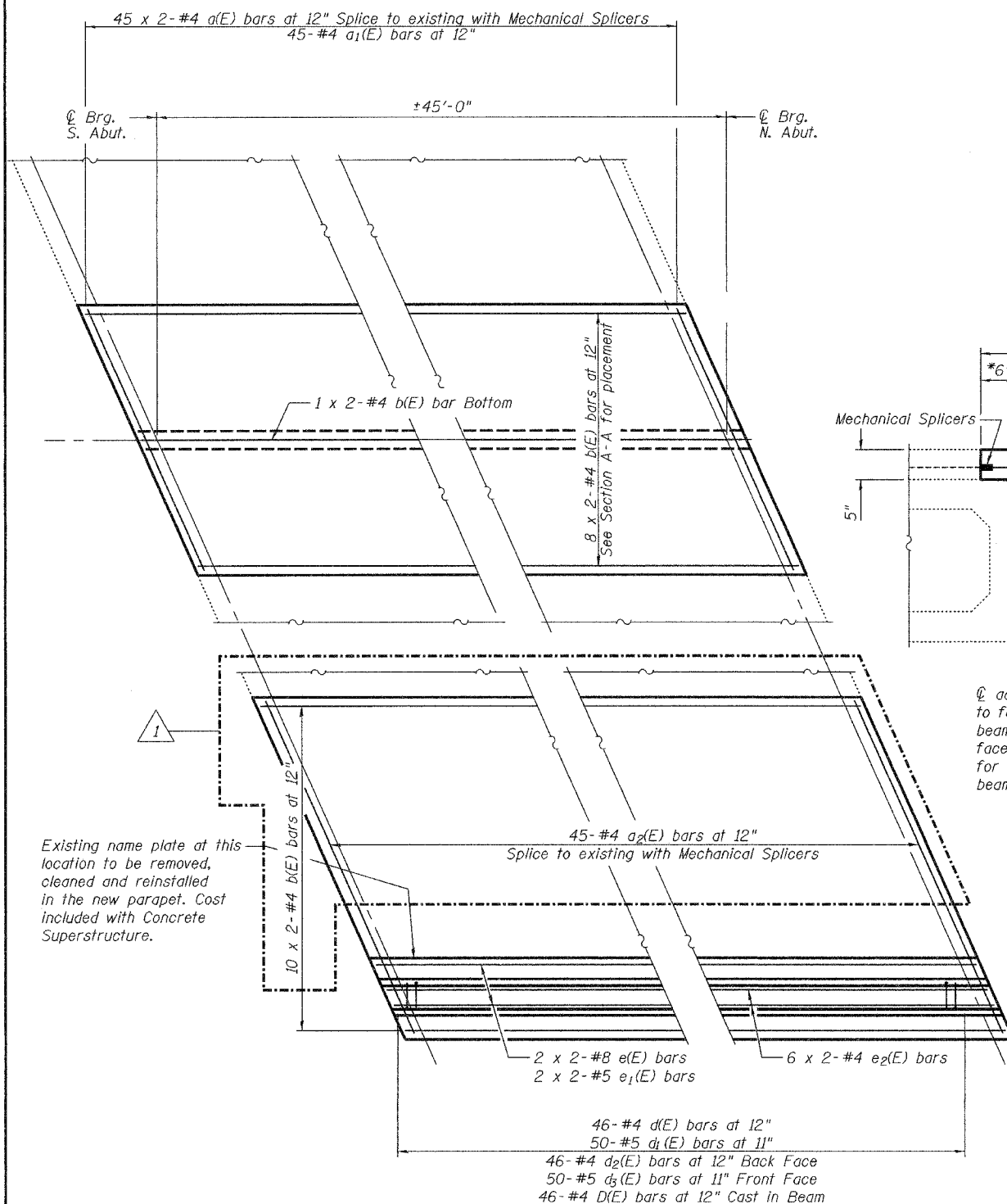


STATE OF ILLINOIS  
DEPARTMENT OF TRANSPORTATION

ROUTE NO.	SECTION	COUNTY	SHEET NO.	SHEET NO.
		COOK	11	8
FED. ROAD DIST. NO. 7		ILLINOIS	FED. AID PROJECT-	

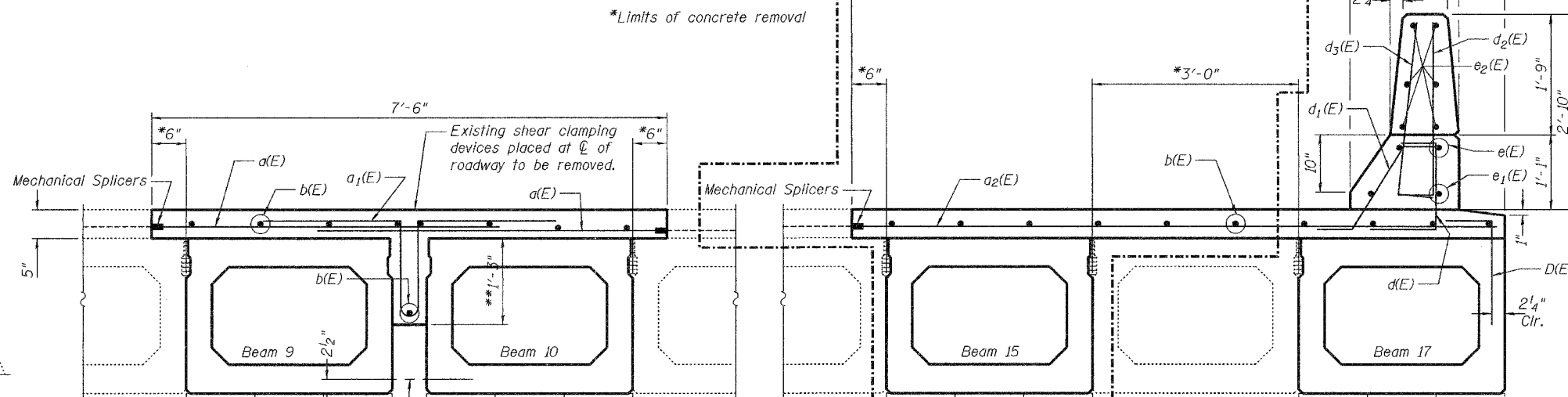
Contract Number: 60D24

SHEET NO. 3  
3 SHEETS



**PARTIAL OVERLAY PLAN**

Notes:  
Removal cost of concrete wearing surface over PPC Deck Beams is included with removal of existing deck beams.  
The cost of removing the existing shear clamping devices shall be included with removal of existing deck beams.

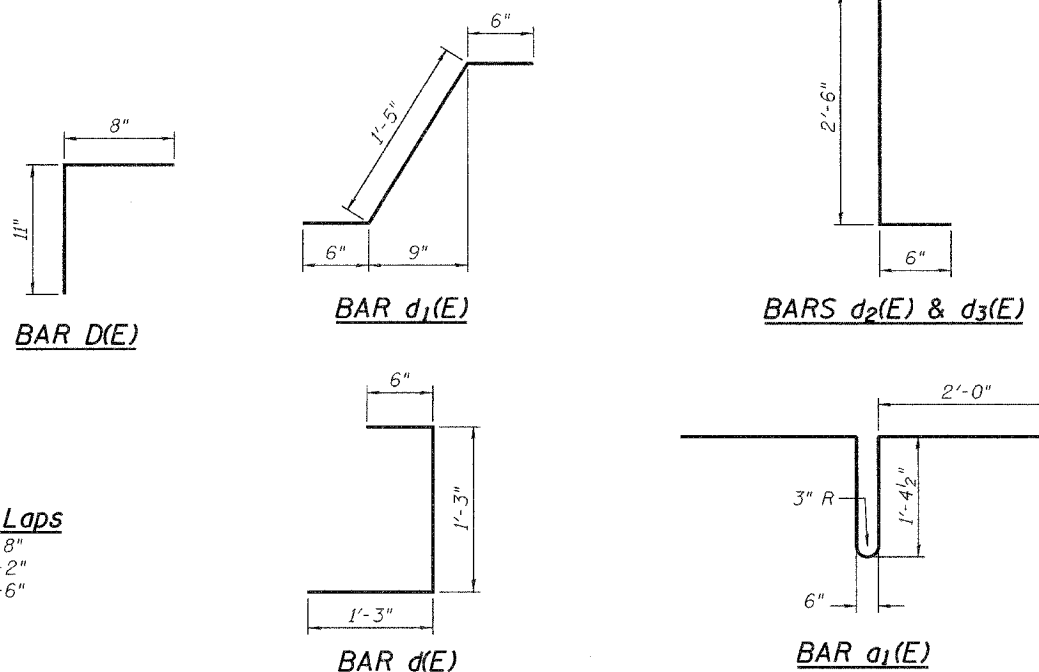


**PARTIAL DECK CROSS SECTION**  
(Looking North)

**BILL OF MATERIAL**

Bar	No.	Size	Length	Shape
a(E)	90	#4	5'-0"	—
a <sub>1</sub> (E)	45	#4	7'-7"	—
a <sub>2</sub> (E)	45	#4	9'-3"	—
b(E)	38	#4	24'-4"	—
d(E)	46	#4	3'-0"	—
d <sub>1</sub> (E)	50	#5	2'-5"	—
d <sub>2</sub> (E)	46	#4	3'-0"	—
d <sub>3</sub> (E)	50	#5	3'-0"	—
e(E)	4	#8	25'-3"	—
e <sub>1</sub> (E)	4	#5	24'-1"	—
e <sub>2</sub> (E)	12	#4	23'-10"	—
Mechanical Splice	Each		135	
Concrete Superstructure	Cu. Yd.		5.0	
Concrete Wearing Surface, 5"	Sq. Yd.		77.6	
Reinforcement Bars, Epoxy Coated	Lbs.		2,450	
Concrete Removal	Cu. Yd.		8.2	

Bars indicated thus 1 x 2-#5 etc. indicates 1 line of bars with 2 lengths per line.



**Min Bar Laps**

- #4 = 1'-8"
- #5 = 2'-2"
- #8 = 4'-6"

DESIGNED	S.J.B.
CHECKED	A.T.H.
DRAWN	Drew Christopher
CHECKED	S.J.B., A.T.H.

September 17, 2007  
EXAMINED *Carl Proyer*  
ENGINEER OF STRUCTURAL SERVICES  
PASSED *Ralph E. Anderson*  
ENGINEER OF BRIDGES AND STRUCTURES

**OVERLAY DETAILS**  
F.A.U. RT. 3597  
COOK COUNTY  
SN 016-0771