

F.A.U. RTE.	SECTION	COUNTY	TOTAL SHEETS	SHEET NO.
3597	0710I-1	COOK	11	1

STATE OF ILLINOIS
DEPARTMENT OF TRANSPORTATION
DIVISION OF HIGHWAYS

**PROPOSED
HIGHWAY PLANS**

**FAU ROUTE 3597: PARK AVE.
OVER CAL UNION DITCH
SECTION: 0710I-1
PPC DECK BEAM REPLACEMENT
COOK COUNTY
C-91-359-07**

FOR INDEX OF SHEETS, SEE SHEET NO. 2

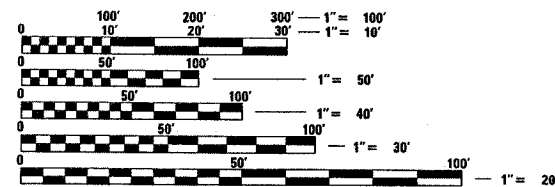
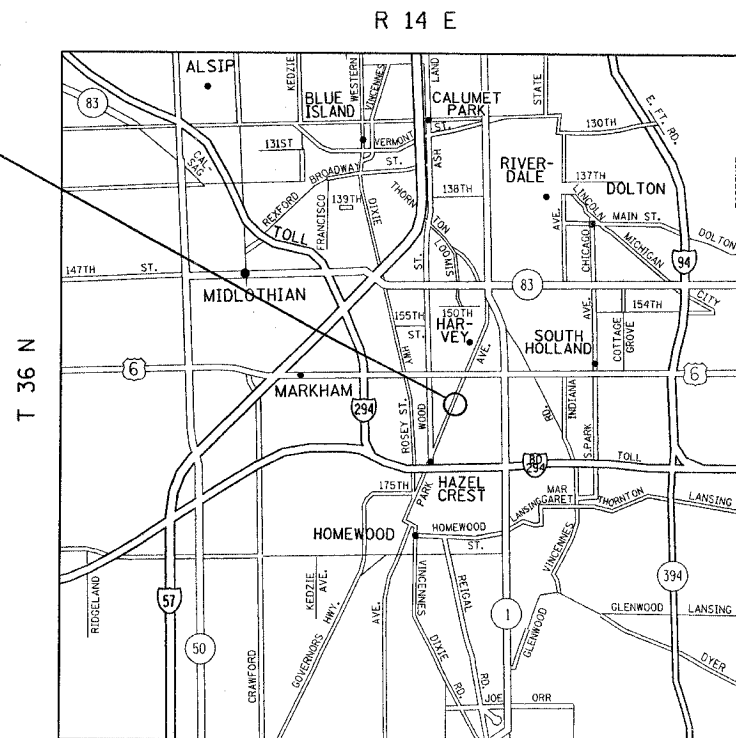
IMPROVEMENT IS LOCATED IN THE VILLAGES OF MARKHAM, HAZEL CREST & HARVEY

TRAFFIC DATA

(PARK AVE.)
SPEED LIMIT= 40 MPH
2006 ADT = 8400



IMPROVEMENT LOCATION:
SN 016-0771



FULL SIZE PLANS HAVE BEEN PREPARED USING STANDARD ENGINEERING SCALES. REDUCED SIZED PLANS WILL NOT CONFORM TO STANDARD SCALES. IN MAKING MEASUREMENTS ON REDUCED PLANS, THE ABOVE SCALES MAY BE USED.

J.U.L.I.E.
JOINT UTILITY LOCATION INFORMATION FOR EXCAVATION
1-800-892-0123

CONTRACT NO. 60D24

DISTRICT ONE DESIGN PLAN PREPARATION ENGINEER:
KEN ENG/ROBERT BORO (847)705-4178

STATE OF ILLINOIS
DEPARTMENT OF TRANSPORTATION
DIVISION OF HIGHWAYS

SUBMITTED Sept. 6 2007

Diane O'Keefe
DEPUTY DIRECTOR OF HIGHWAYS, REGION ENGINEER

October 12, 2007

Eric E. Hamm
INTERIM ENGINEER OF DESIGN AND ENVIRONMENT

October 12, 2007

Milton R. Seos, P.E.
DIRECTOR OF HIGHWAYS, CHIEF ENGINEER

**PRINTED BY THE AUTHORITY
OF THE STATE OF ILLINOIS**