

**STATE OF ILLINOIS
DEPARTMENT OF TRANSPORTATION
DIVISION OF HIGHWAYS
PLANS FOR PROPOSED
FEDERAL AID HIGHWAY
F.A.P. ROUTE 533 (IL RTE 176)
OVER THE KISHWAUKEE RIVER
BEAM AND BEARING FABRICATION
SECTION 119R-2-I-1
PROJECT NO. *ACBRF-0533(009)*
MCHENRY COUNTY
C-91-048-08**

CONTRACT NO. 60D58

F.A. ROUTE NO.	SECTION	COUNTY	TOTAL SHEETS	SHEET NO.
533	119R-2-I-1	MCHENRY	13	1
FED. ROAD DIST. NO.	ILLINOIS FED. AID PROJECT			

D-91-471-01

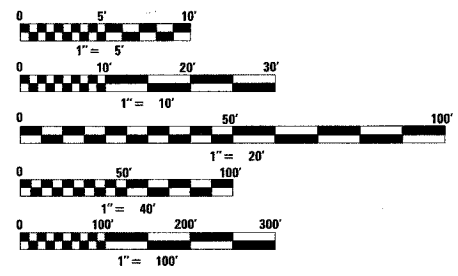
FOR INDEX OF SHEETS, SEE SHEET NO. 2

TRAFFIC DATA
EXISTING ADT
8,300 (1999)
DESIGN ADT
9,960 (2019)
SPEED LIMIT 55 MPH

DESIGN DESIGNATION
OTHER PRINCIPAL ARTERIAL
0960 (19) ARTERIAL 3.73 (BIT-20)

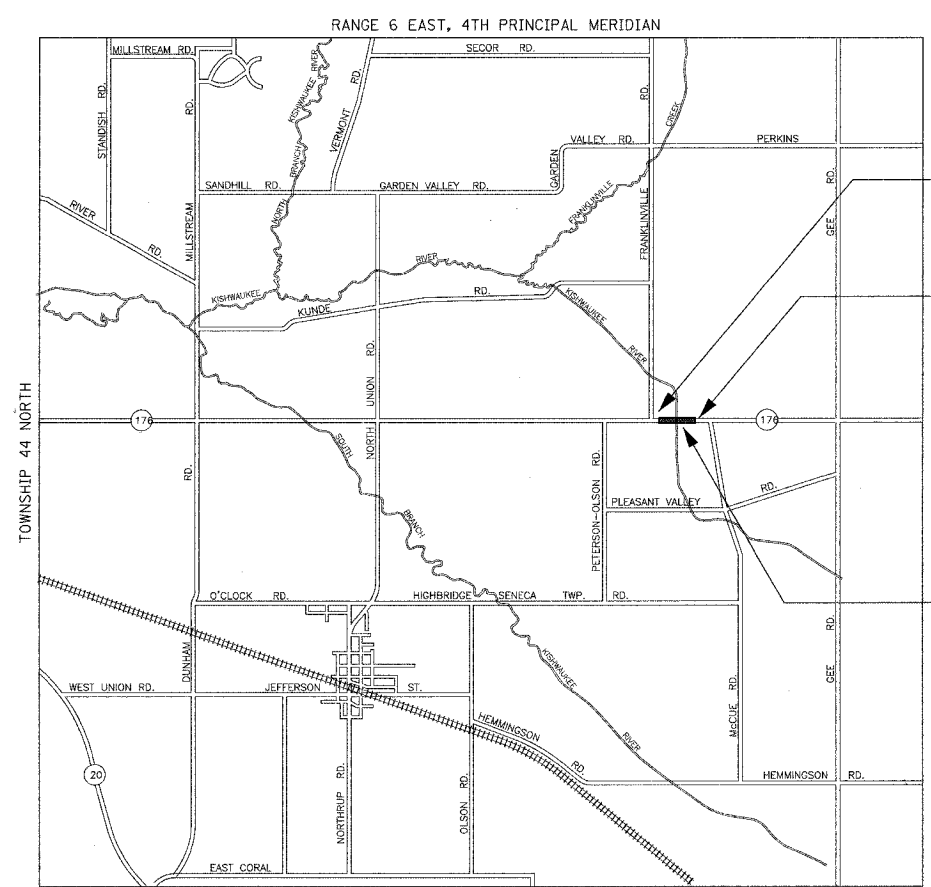


PROJECT LOCATED IN SENECA TOWNSHIP
IN UNINCORPORATED MCHENRY COUNTY



FULL SIZE PLANS HAVE BEEN PREPARED USING STANDARD ENGINEERING SCALES, REDUCED SIZED PLANS WILL NOT CONFORM TO STANDARD SCALES, IN MAKING MEASUREMENTS ON REDUCED PLANS, THE ABOVE SCALES MAY BE USED.

J.U.L.I. JOINT UTILITY LOCATION INFORMATION FOR EXCAVATION 1-800-892-0123



PROJECT BEGINS
STA 9+61

PROJECT ENDS
STA 10+39

STA 10+00
EXISTING SN 056-0005
REMOVE EXISTING 43 FOOT
SINGLE SPAN STRUCTURE
PROPOSED SN 056-0078
78' SINGLE SPAN, ROLLED
STEEL SUPERSTRUCTURE.

STATE OF ILLINOIS
SCOTT D. HINCHES
081-005750
EXPIRES: 11/30/2008
8/17/09

SENECA TOWNSHIP
SCALE 1" = 2500 FEET

GROSS AND NET LENGTH OF PROJECT: 78 FT (0.015 MI)

STATE OF ILLINOIS
DEPARTMENT OF TRANSPORTATION
DIVISION OF HIGHWAYS
SUBMITTED August 16 20 07
Diane O'Keefe/CA REGION ONE ENGINEER
October 12, 20 07
Eric E. Horn/CA ENGINEER OF DESIGN AND ENVIRONMENT
October 12, 20 07
Milton R. Sica/CA DIRECTOR, DIVISION OF HIGHWAYS

PRINTED BY THE AUTHORITY OF
THE STATE OF ILLINOIS

GRAEF, ANHALT, SCHLOEMER & ASSOCIATES, INC.
ENGINEERS & SCIENTISTS
8501 W. Higgins Road, Suite 280
Chicago, Illinois 60631
(773) 399-0112

DISTRICT ONE PLAN PREPARATION ENGINEER: JOSE DOMINGUEZ (847) 705-4232

CONTRACT NO. 60D58