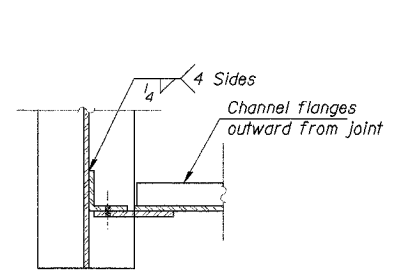
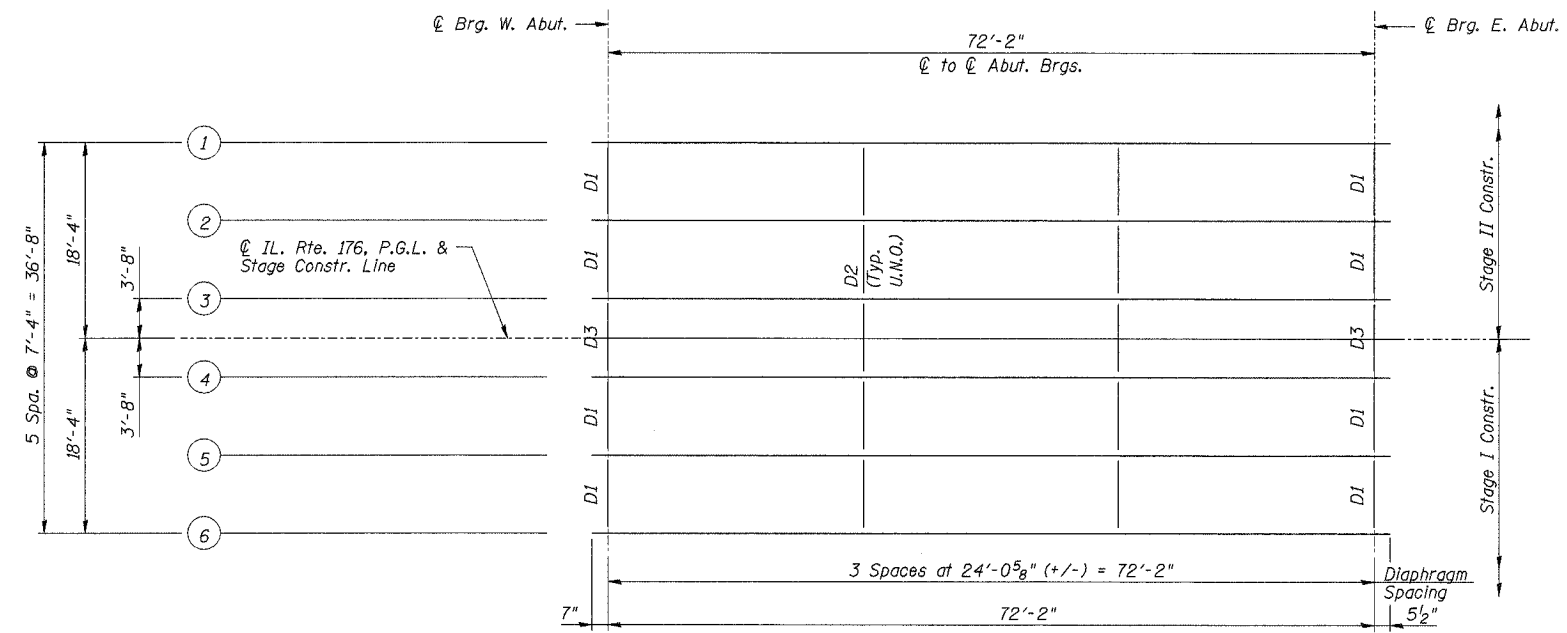


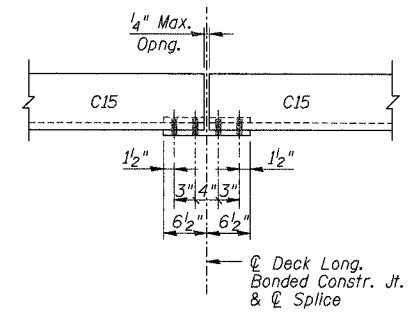
ROUTE NO.	SECTION	COUNTY	SHEET NO.	SHEET TOTAL
533	119R-2-I-1	McHenry	13	9
FED. ROAD DIST.		BUILDING	FED. AID PROJECT	

Contract #60D58

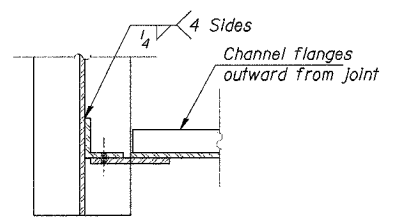
SHEET NO. 7 OF 11 SHEETS



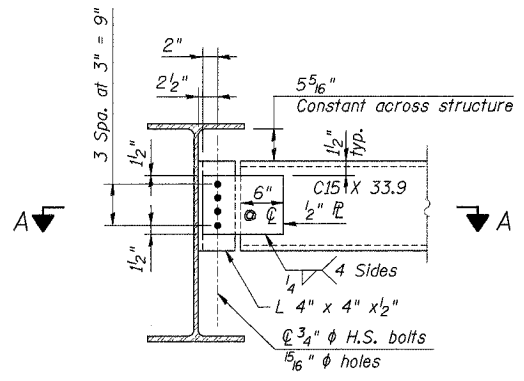
SECTION C-C



VIEW B-B

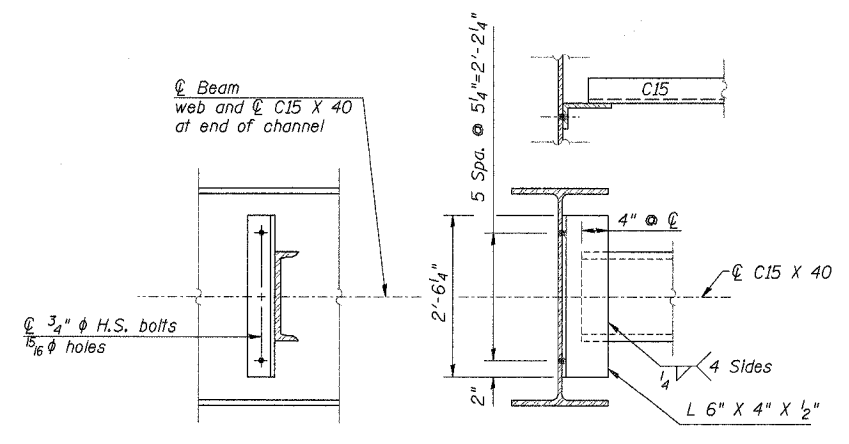


SECTION A-A

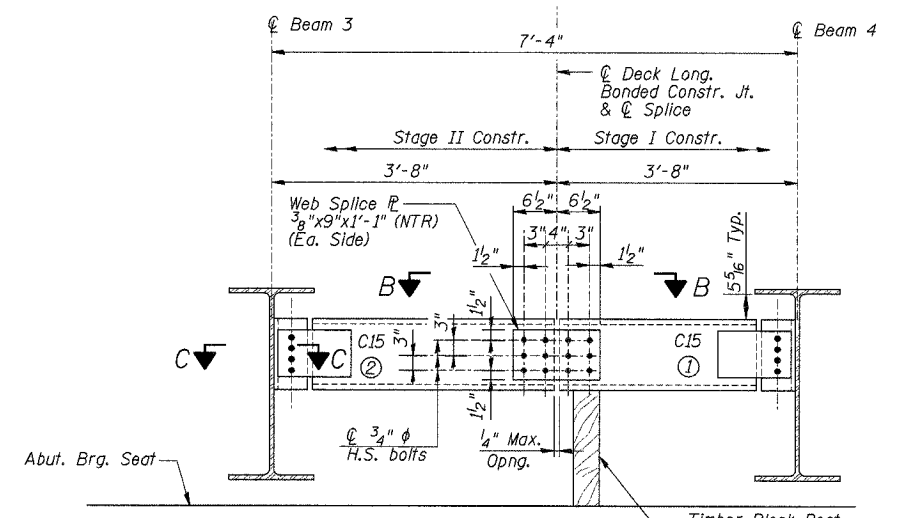


DIAPHRAGM D1
8 Required

FRAMING PLAN



DIAPHRAGM D2
10 Required



DIAPHRAGM D3
2 Required
(Looking East at W. Abut., E. Abut. Sim.)

DIAPHRAGM D3 CONSTRUCTION SEQUENCE
(For Information Only)

1. Order Diaphragm D3 in two sections.
2. Attach Section ① of Diaphragm to Beam 4 during Stage I Construction.
3. Place Timber Block Posts between section ① of diaphragm and abutment bearing seat.
4. Attach section ② of diaphragm to both Beam 3 and section ① of diaphragm during Stage II Construction with splice plates.
5. Remove Timber Block Posts.

Notes:
Two hardened washers required for each set of oversized holes at diaphragms.
All Structural Steel on this sheet shall be AASHTO M270 Grade 50W.
Work this Sheet with Sheet 8 of 11.

DESIGNED	J.Z.
CHECKED	S.D.H.
DRAWN	M.S.M.
CHECKED	S.D.H.

FRAMING PLAN
IL Route 176 over the Kishwaukee River
F.A.P. RTE 533, SECTION 119R-2-I-1
McHENRY COUNTY
STATION 10+00.00
S.N. 056-0078
DATE: 08-17-07
GRAEF, ANHALT, SCHLOEMER & ASSOCIATES INC
CHICAGO ILLINOIS

N:\vbs2\06\p107\1\Steel\ab\Pre\final\Bridges\056-0005-5-07.dgn 8/17/2007 3:08:06 PM