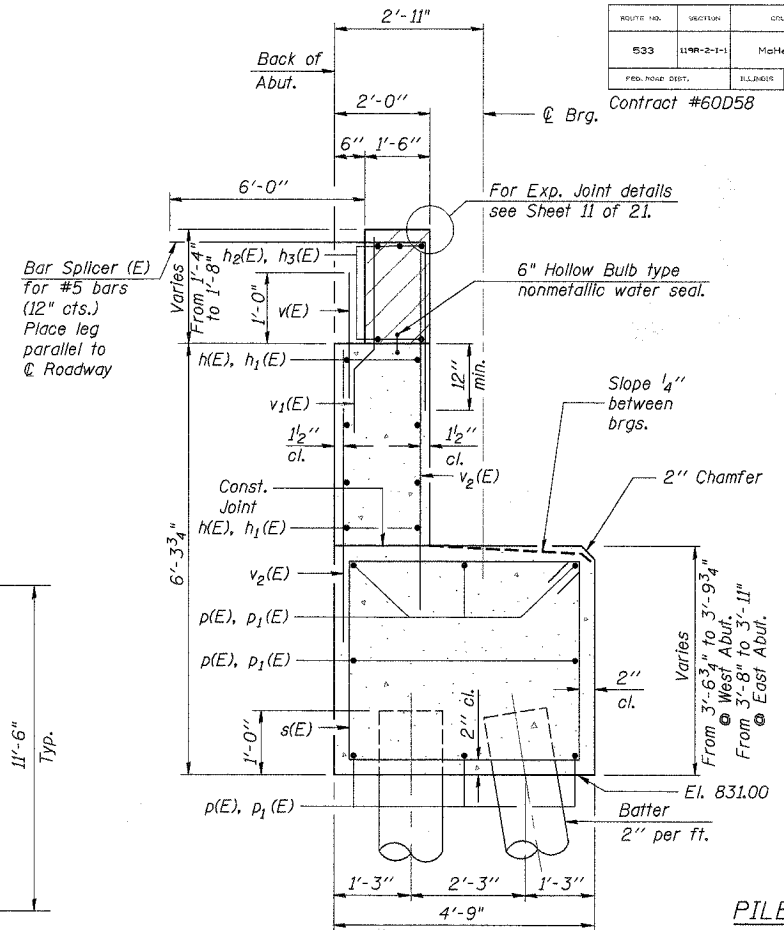
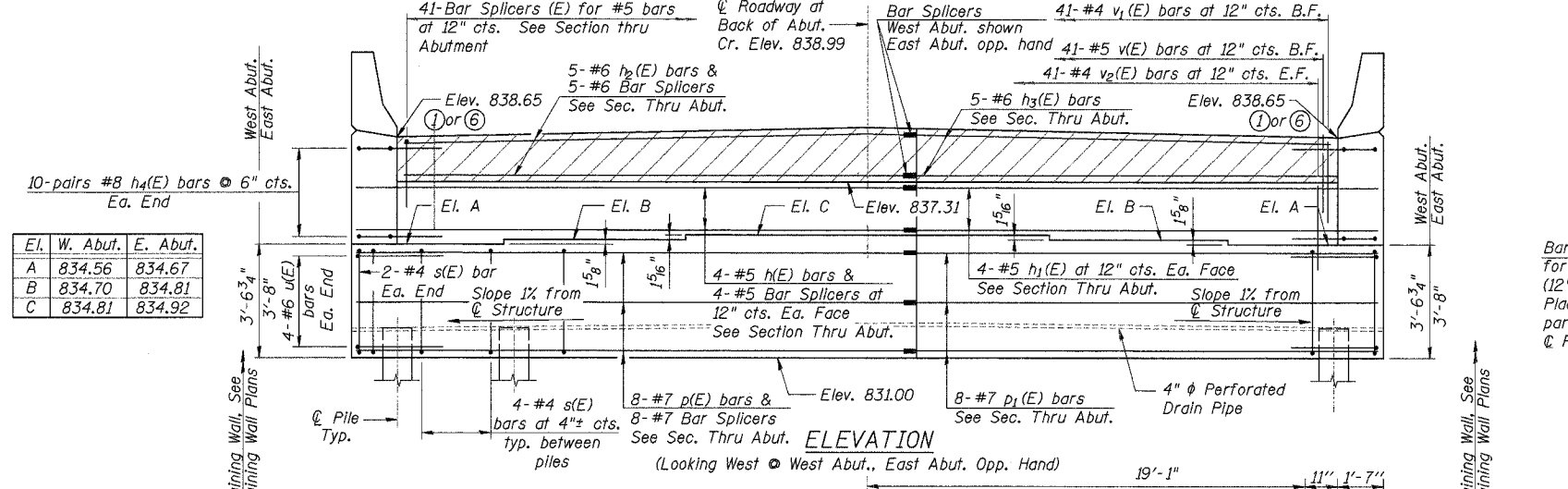


ROUTE NO.	SECTION	COUNTY	SHEET NO.	SHEET
533	119R-2-I-1	McHenry	13	12
FED. ROAD DIST.		ILLINOIS	FED. AID PROJECT	

SHEET NO. 12 OF 11 SHEETS

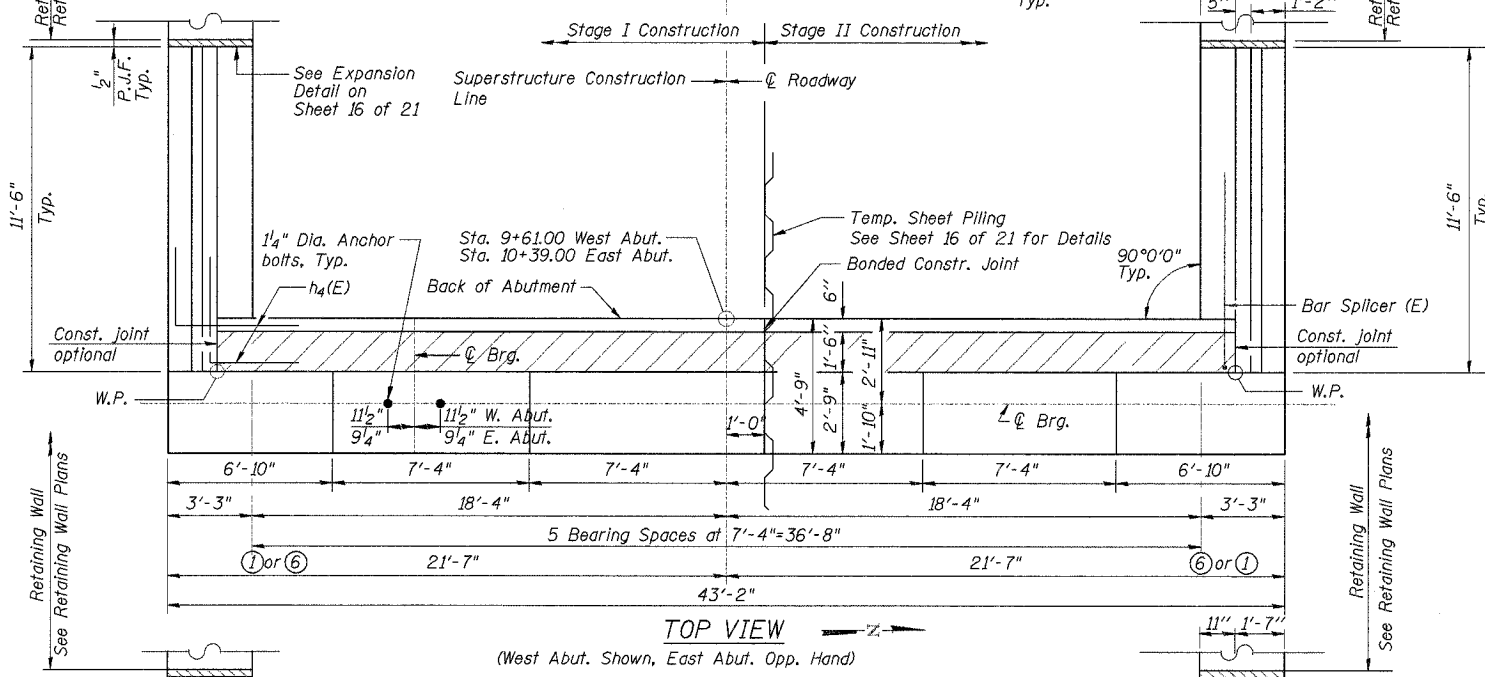
Contract #60D58

Notes:
 Hatched area to be poured after superstructure false work has been removed. Quantity of Concrete Included with Concrete Superstructure.
 Space reinforcement in cap to miss anchor bolts. Pour steps monolithically with cap.
 Concrete sealer shall be applied to the top of seats, front face of backwall, and front face of abutment stem.
 Excavation behind existing abutment walls shall be performed to balance front and back soil pressure before removing the existing superstructure. The Contractor shall sawcut the upper portion of the existing abutment at the stage removal line before Stage I removal to ensure the remaining portion will not be prematurely damaged.

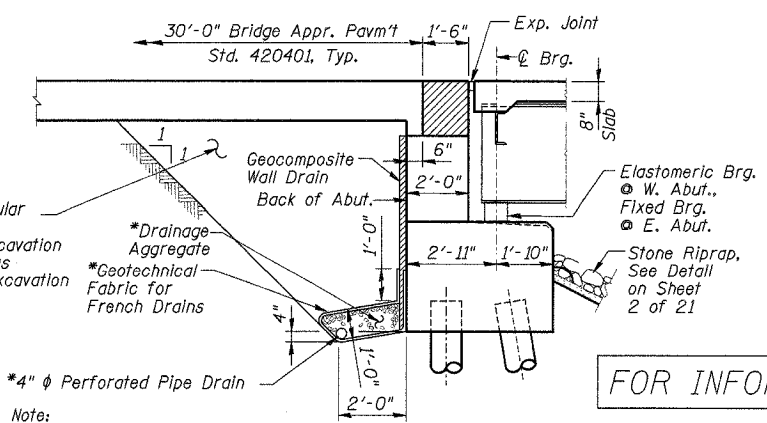


SECTION THRU ABUTMENT
(Showing reinforcement)

PILE DATA
 Pile Type and Size: Metal Shell 14" dia. x 1/4" Walls
 Nominal Required Bearing: 390 kips
 Allowable Resistance Available: 130 kips
 Estimated Pile Length: 52 ft. @ West Abut.
 54 ft. @ East Abut.
 Number of Production Piles: 18 at each Abut.
 Number of Test Piles: 1 at each Abut.



TOP VIEW
(West Abut. Shown, East Abut. Opp. Hand)



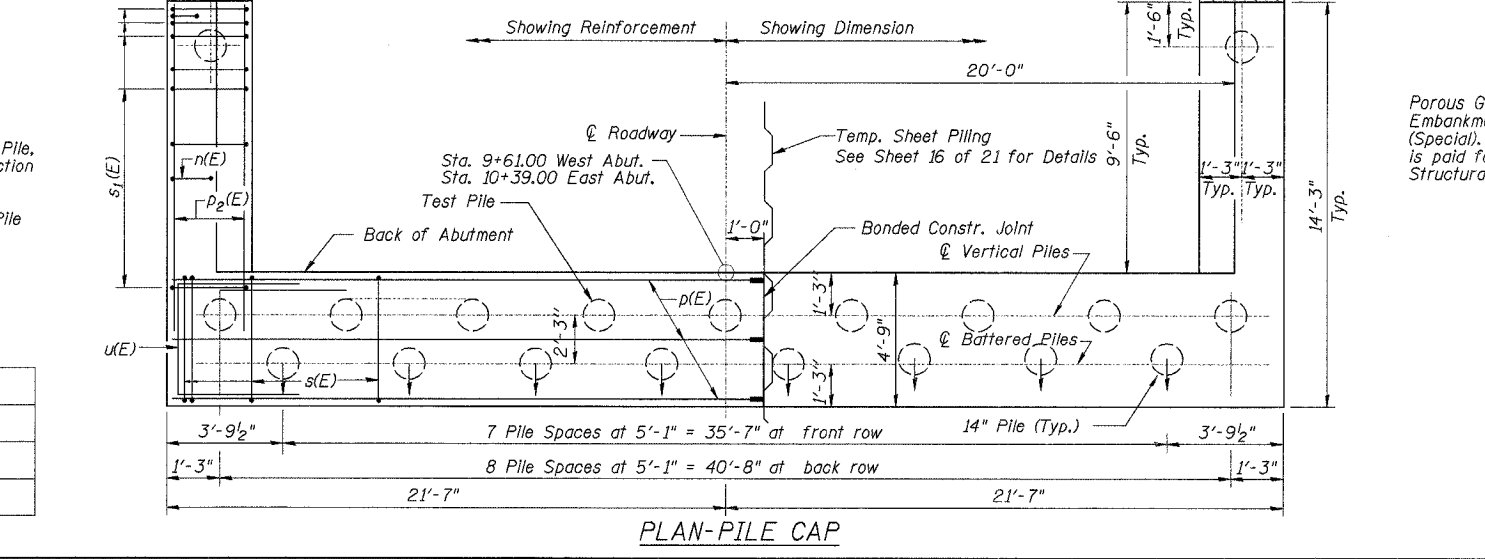
SECTION THRU ABUTMENT
(Showing details)

FOR INFORMATION ONLY

EAST & WEST ABUTMENTS
 IL Route 176 over the Kishwaukee River
 F.A.P. RTE 533, SECTION 119R-2-I-1
 McHENRY COUNTY
 STATION 10+00.00
 S.N. 056-0078
 DATE: 08-17-07
 GRAEF, ANHALT, SCHLOEMER & ASSOCIATES INC
 CHICAGO ILLINOIS

LEGEND
 Designates Battered Pile, arrow points to direction of batter
 Designates Vertical Pile

DESIGNED	J.Z.
CHECKED	S.D.H.
DRAWN	M.S.M.
CHECKED	S.D.H.



PLAN-PILE CAP

N:\056206\056206.dwg 8/17/2007 8:52:28 AM